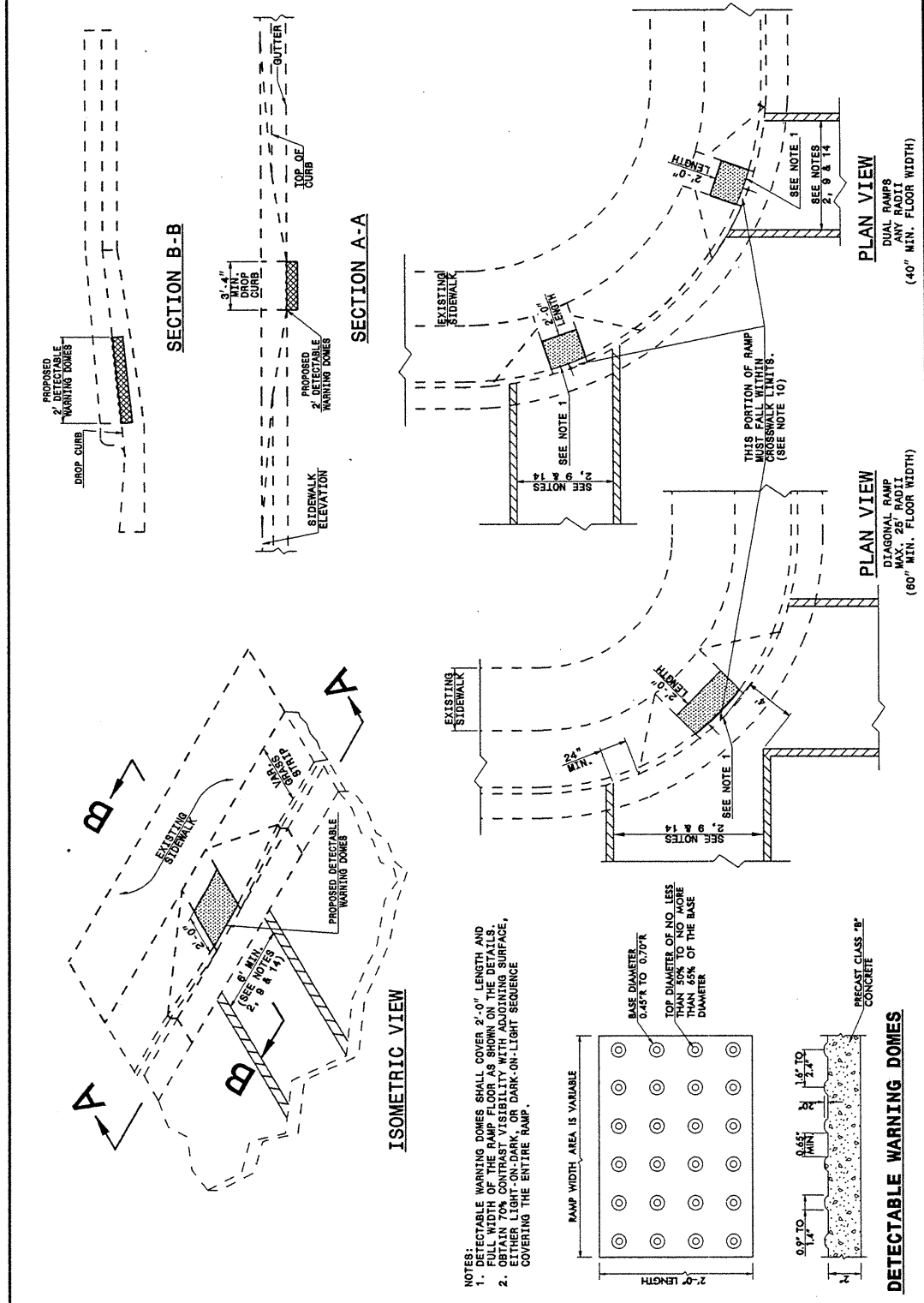


I:\SEP-2005\1407
 2:\Projects\Special Details\vertical\stds\02\stds to Special Details\english\84806\0848d06.dgn
 ericward

STATE OF NORTH CAROLINA
 DEPT. OF TRANSPORTATION
 DIVISION OF HIGHWAYS
 RALEIGH, N.C.

ENGLISH DETAIL DRAWING FOR
**RETROFITTING DETECTABLE WARNING DOMES
 ONTO EXISTING WHEELCHAIR RAMP**
 CURB CUT

SHEET 3 OF 5
848D06



STATE OF NORTH CAROLINA
 DEPT. OF TRANSPORTATION
 DIVISION OF HIGHWAYS
 RALEIGH, N.C.

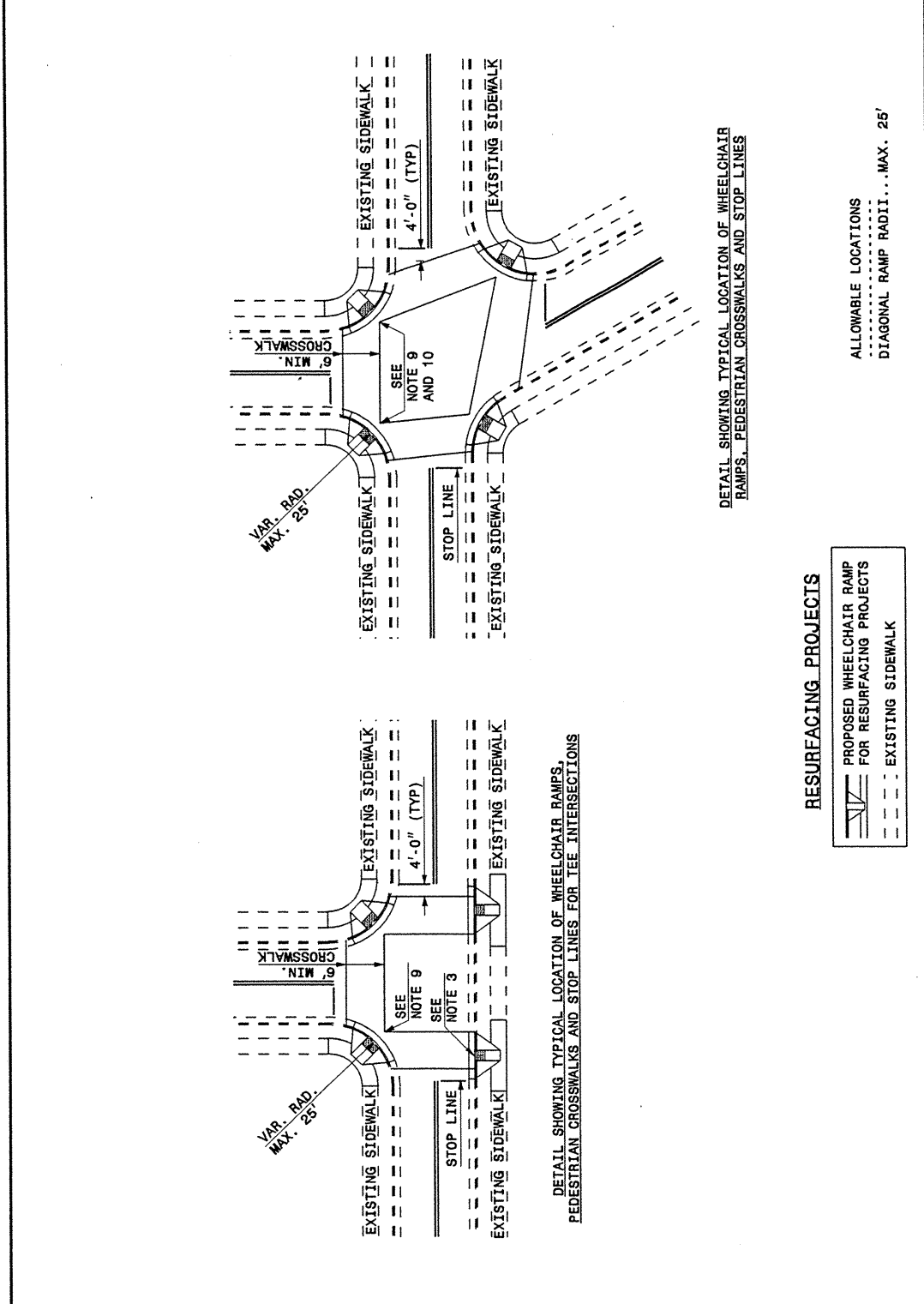
ENGLISH DETAIL DRAWING FOR
**RETROFITTING DETECTABLE WARNING DOMES
 ONTO EXISTING WHEELCHAIR RAMP**
 CURB CUT

SHEET 3 OF 5
848D06

STATE OF NORTH CAROLINA
 DEPT. OF TRANSPORTATION
 DIVISION OF HIGHWAYS
 RALEIGH, N.C.

ENGLISH DETAIL DRAWING FOR
WHEELCHAIR RAMP
 CURB CUT

SHEET 4 OF 5
848D06



STATE OF NORTH CAROLINA
 DEPT. OF TRANSPORTATION
 DIVISION OF HIGHWAYS
 RALEIGH, N.C.

ENGLISH DETAIL DRAWING FOR
WHEELCHAIR RAMP
 CURB CUT

SHEET 4 OF 5
848D06

**PROJECT SERVICES UNIT
 STANDARDS AND SPECIAL DESIGN**
 Office 919-250-4128 FAX 919-250-4119

SEE PLATE FOR TITLE

ORIGINAL BY: DETAIL 848D05 DATE: _____
 MODIFIED BY: E.E. WARD DATE: 09-06-05
 CHECKED BY: _____ DATE: _____
 FILE SPEC.: /usr/stds/02/detail/english/84806/848d06.dgn