

NOTES

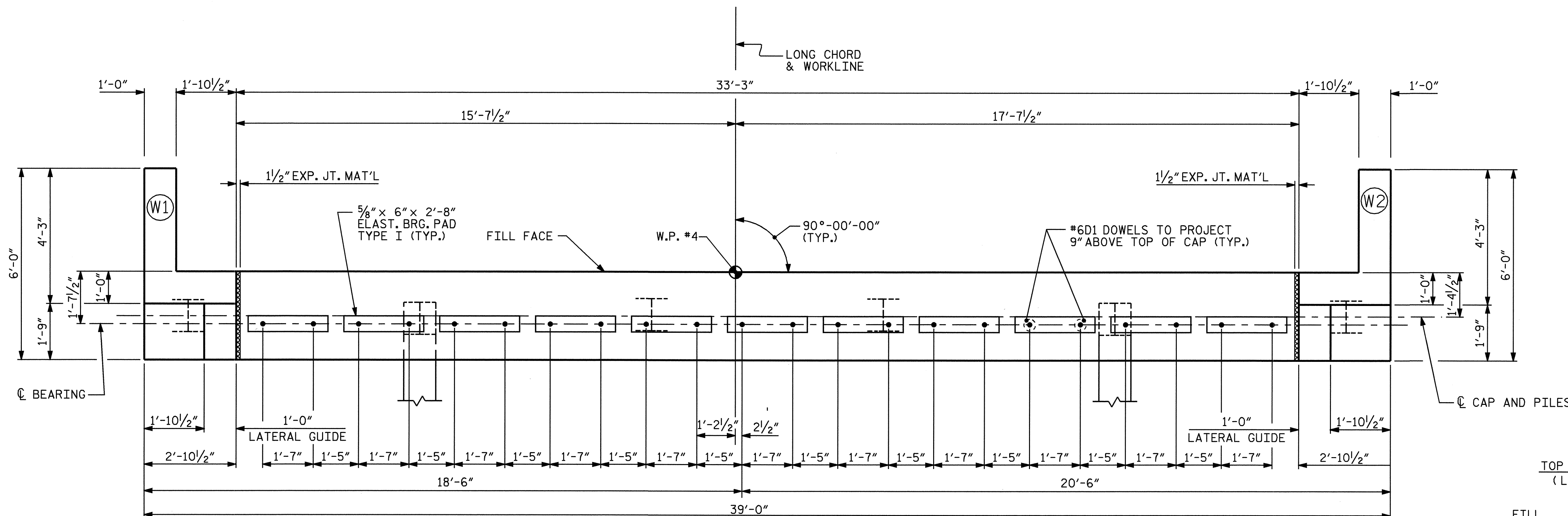
THE LATERAL GUIDE AT ENDS OF CAP IS NOT TO BE POURED UNTIL AFTER CORED SLAB UNITS ARE IN PLACE.

STIRRUPS IN CAP MAY BE SHIFTED AS NECESSARY TO CLEAR DOWELS.

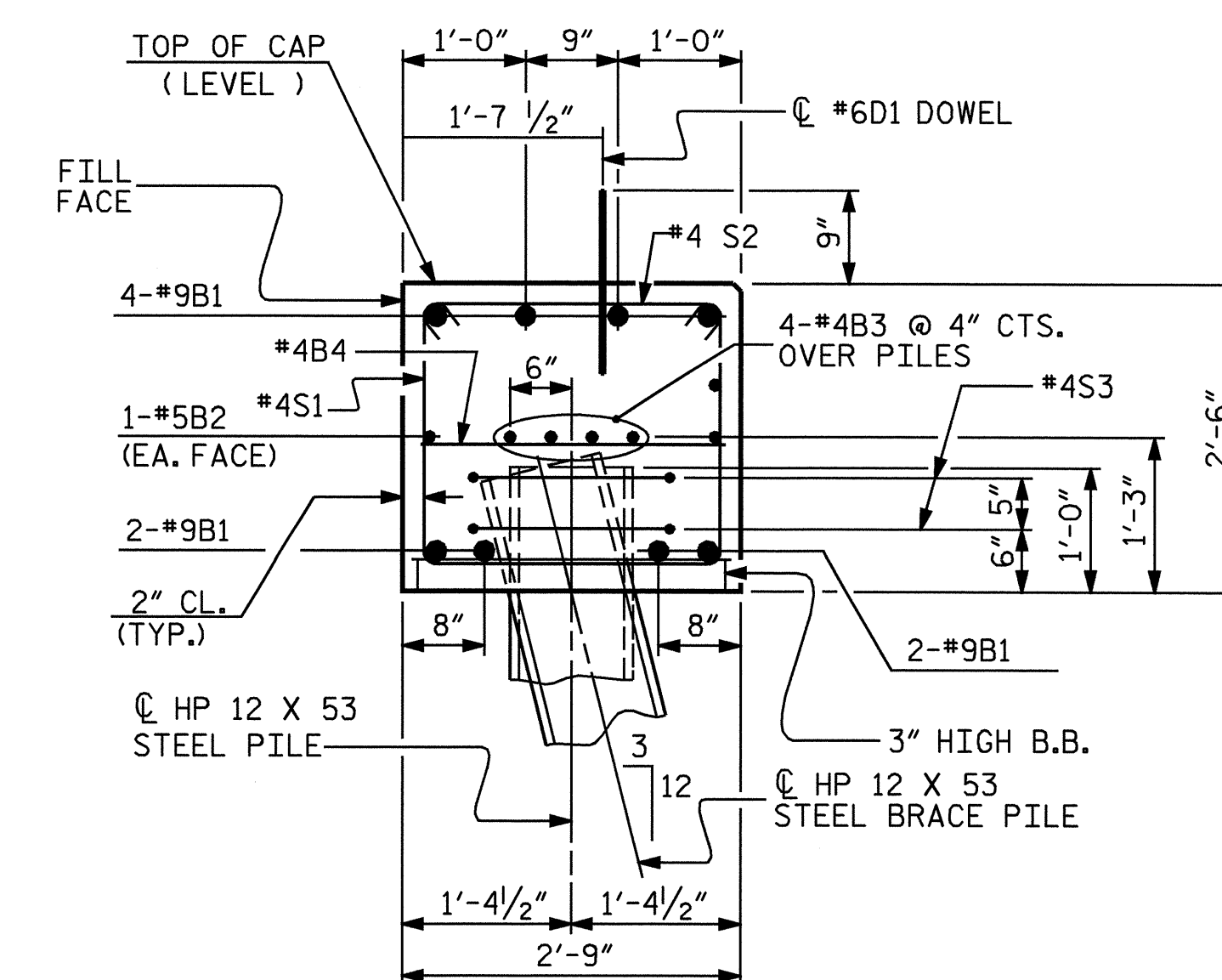
THE CONTRACTOR SHALL PROVIDE FOR INSTALLATION OF THE 4" DIAMETER DRAIN PIPE THROUGH THE WING WALL AS REQUIRED FOR REINFORCED BRIDGE APPROACH FILLS, SEE THE ROADWAY PLANS. REINFORCING STEEL IN THE WING WALL MAY BE SHIFTED AS NECESSARY TO CLEAR THE DRAIN PIPE.

PILE #	TOP OF PILE ELEVATION
1	71.133
2	70.912
3	70.698
4	70.481
5	70.263
6	70.046

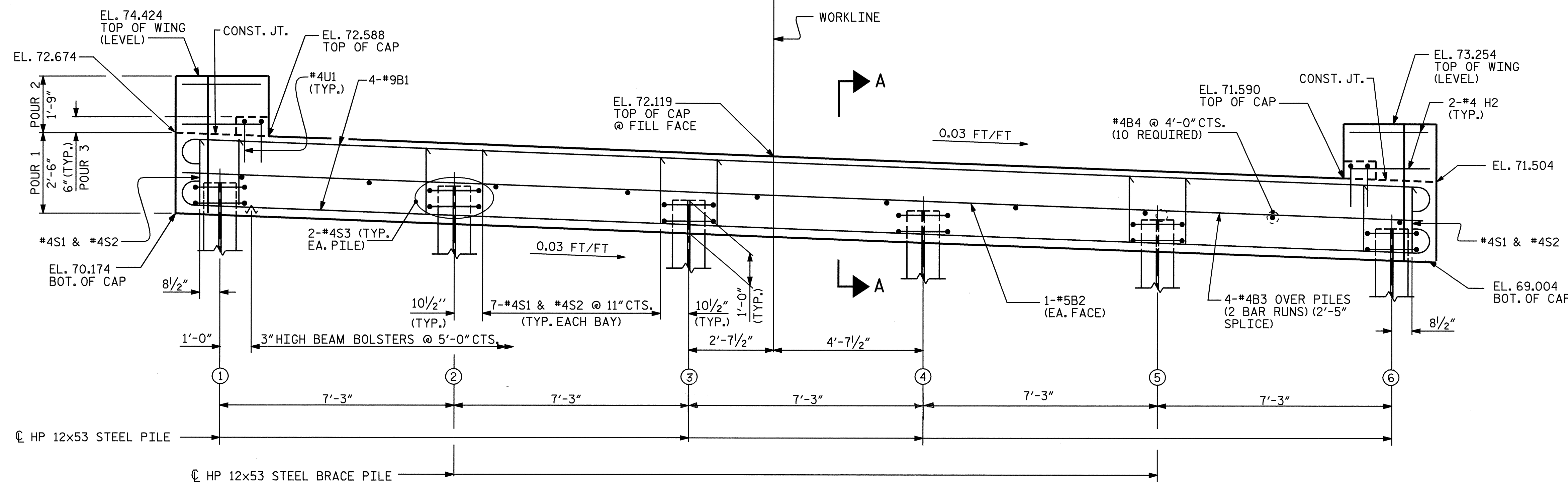
CHART A



PLAN



SECTION A-A



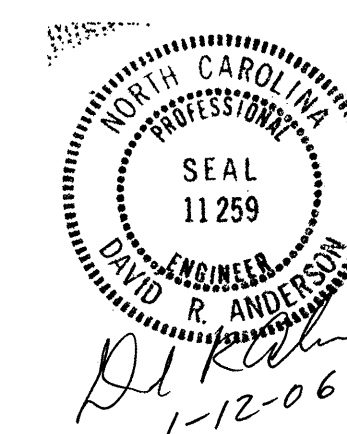
ELEVATION

PROJECT NO. B-3639
EDGECOMBE COUNTY
 STATION: 17+59.40 -L-

SHEET 1 OF 2

STATE OF NORTH CAROLINA
 DEPARTMENT OF TRANSPORTATION
 RALEIGH

SUBSTRUCTURE
 END BENT 2



REVISIONS						SHEET NO.
NO.	BY:	DATE:	NO.	BY:	DATE:	S-15
1			3			TOTAL SHEETS
2			4			20

DRAWN BY : S. M. RASHIDI DATE : 1/3/03
 CHECKED BY : N. TRAN DATE : 1/10/05