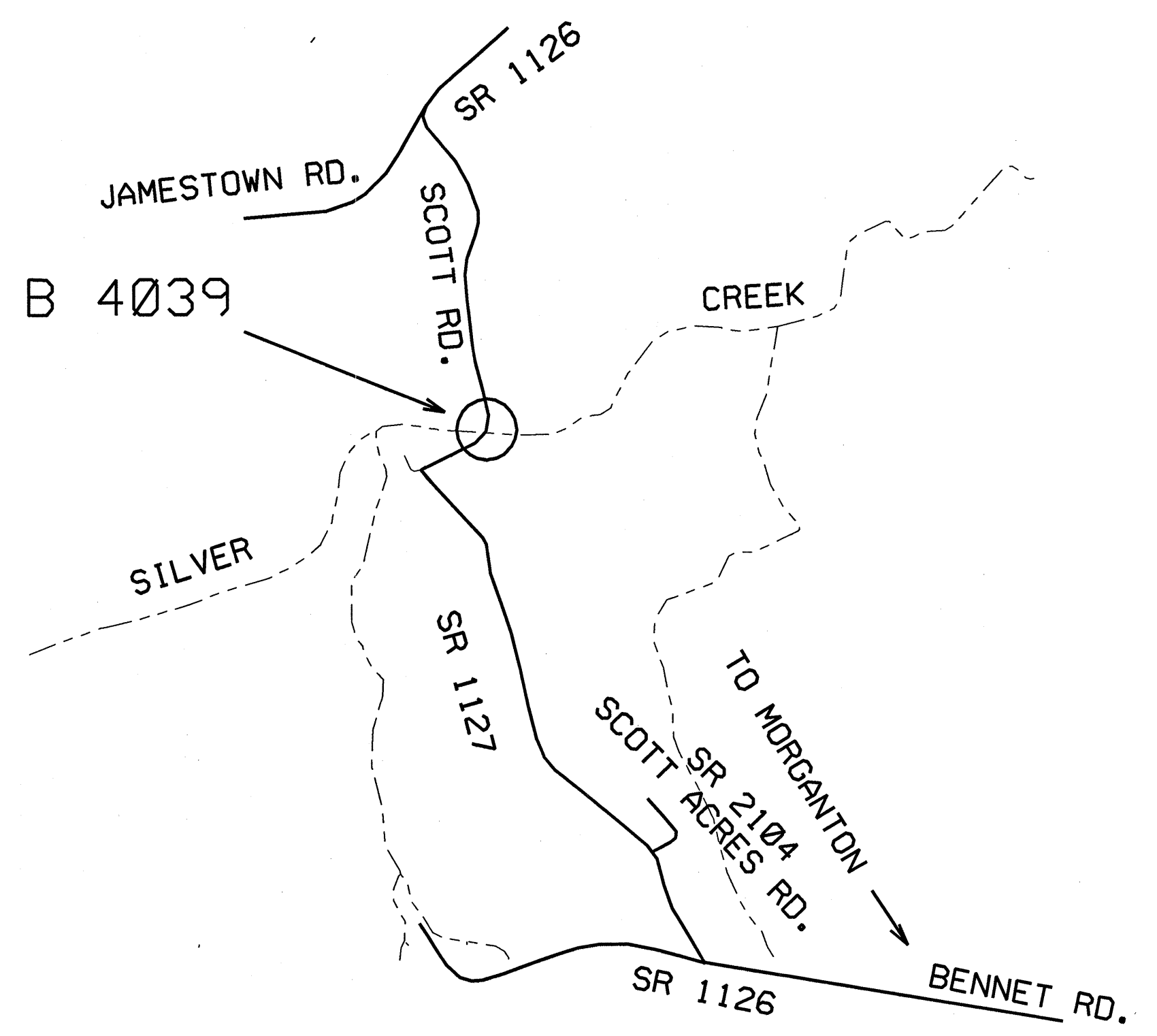
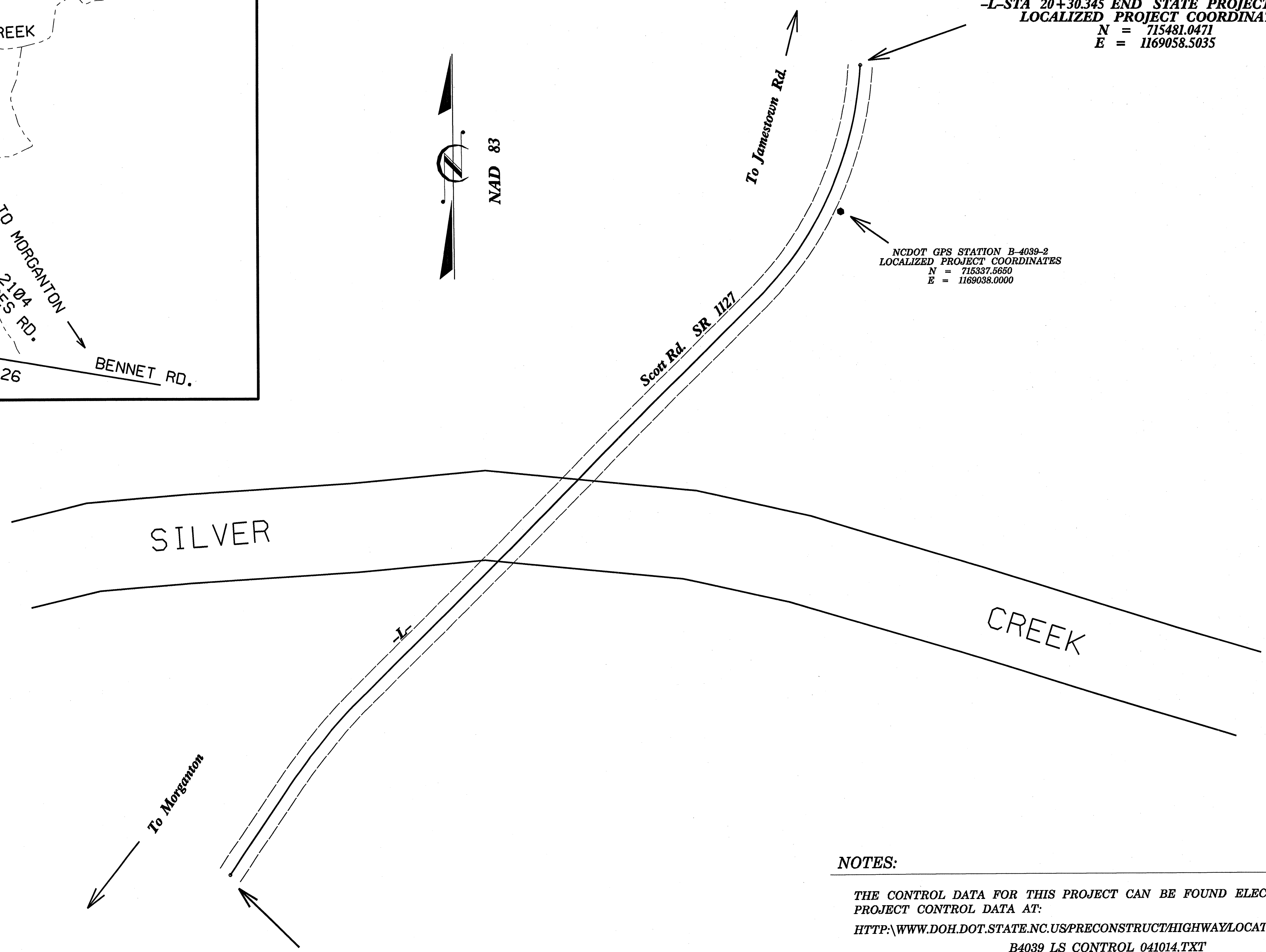


# SURVEY CONTROL SHEET



NOT TO SCALE



-L-STA 20+30.345 END STATE PROJECT 33405.1.1  
 LOCALIZED PROJECT COORDINATES  
 N = 715481.0471  
 E = 1169058.5035

NCDOT GPS STATION B-4039-2  
 LOCALIZED PROJECT COORDINATES  
 N = 715337.5650  
 E = 1169038.0000

-L-STA 10+00.000 BEGIN STATE PROJECT 33405.1.1  
 LOCALIZED PROJECT COORDINATES  
 N = 714689.1760  
 E = 1168427.7698

NCDOT GPS STATION B-4039-1  
 LOCALIZED PROJECT COORDINATES  
 N = 714515.6190  
 E = 1168336.7110

**DATUM DESCRIPTION**  
 THE LOCALIZED COORDINATE SYSTEM DEVELOPED FOR THIS PROJECT IS BASED ON THE STATE PLANE COORDINATES ESTABLISHED BY NCDOT FOR MONUMENT "B-4039-2"  
 WITH NAD 83 STATE PLANE GRID COORDINATES OF  
 NORTHING: 715337.5650(E) EASTING: 1169038.2920(E)  
 THE AVERAGE COMBINED GRID FACTOR USED ON THIS PROJECT (GROUND TO GRID) IS: 0.999802894  
 THE N.C. LAMBERT GRID BEARING AND LOCALIZED HORIZONTAL GROUND DISTANCE FROM "B-4039-2" TO L- STATION 10+00.00 IS  
 S 43 15 48.39 W 890.39'  
 ALL LINEAR DIMENSIONS ARE LOCALIZED HORIZONTAL DISTANCES  
 VERTICAL DATUM USED IS NAVD 88

**NOTES:**

THE CONTROL DATA FOR THIS PROJECT CAN BE FOUND ELECTRONICALLY BY SELECTING PROJECT CONTROL DATA AT:  
[HTTP://WWW.DOH.DOT.STATE.NC.US/PRECONSTRUCT/HIGHWAY/LOCATION/PROJECT/B4039\\_LS\\_CONTROL\\_041014.TXT](http://www.doh.dot.state.nc.us/preconstruct/highway/location/project/B4039_LS_CONTROL_041014.TXT)

SITE CALIBRATION INFORMATION HAS NOT BEEN PROVIDED FOR THIS PROJECT. IF FURTHER INFORMATION IS NEEDED, PLEASE CONTACT THE LOCATION AND SURVEYS UNIT.

- INDICATES GEODETIC CONTROL MONUMENTS USED OR SET FOR HORIZONTAL PROJECT CONTROL BY THE NCDOT LOCATION AND SURVEYS UNIT.

PROJECT CONTROL ESTABLISHED USING GLOBAL POSITIONING SYSTEM.  
 NETWORK ESTABLISHED FROM NGS ONLINE POSITIONING USER SERVICE (OPUS)

NOTE: DRAWING NOT TO SCALE