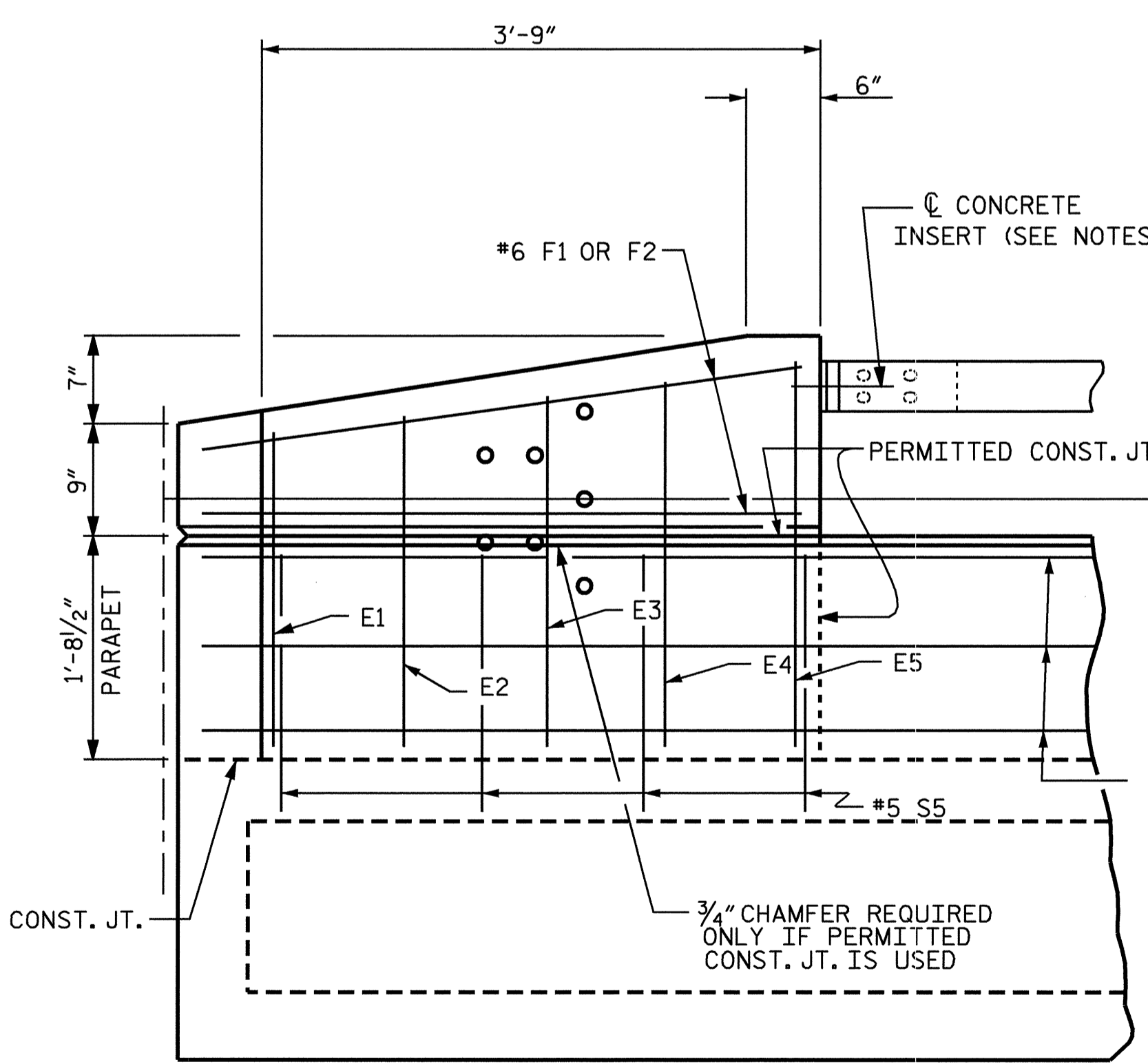
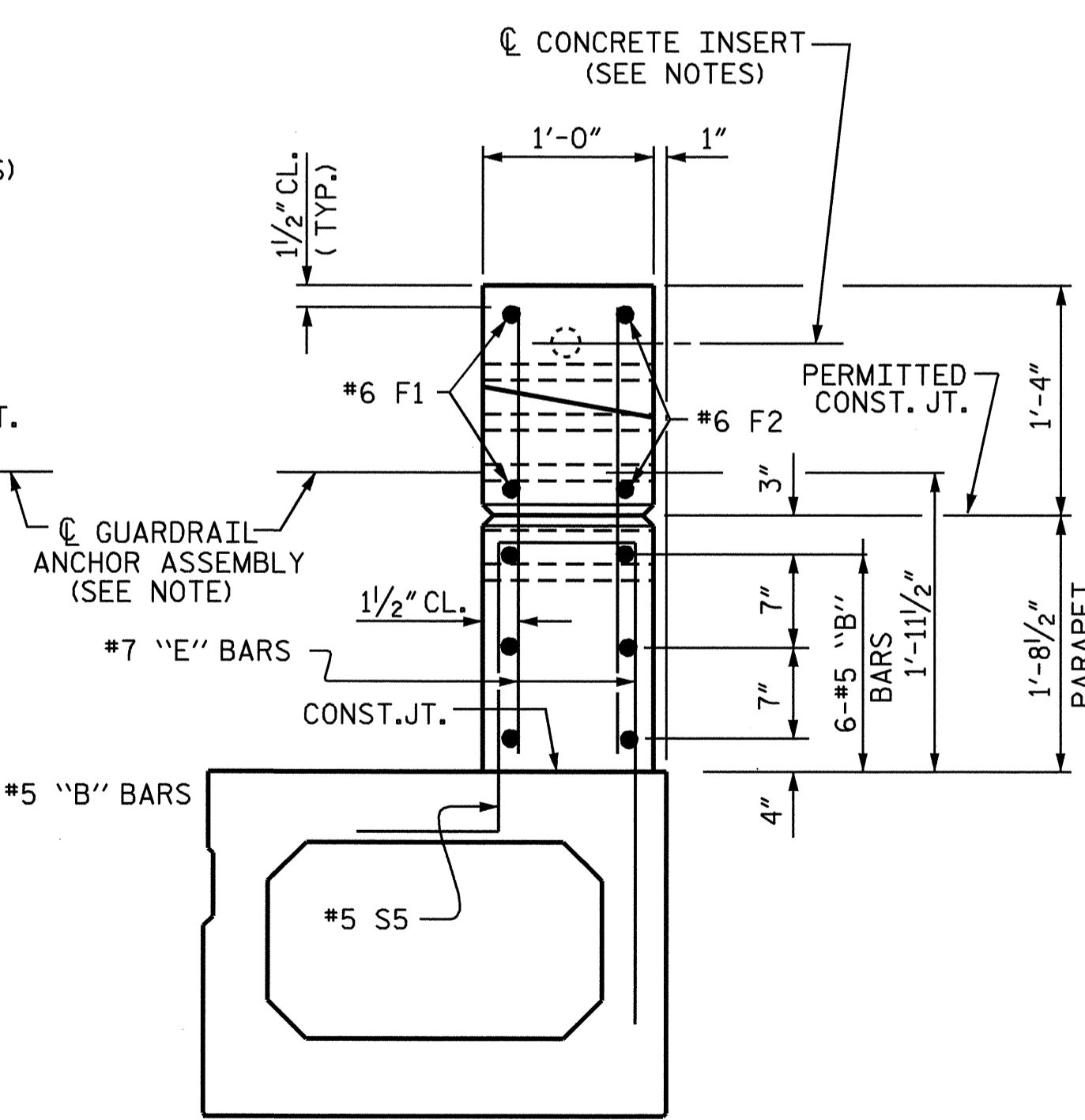


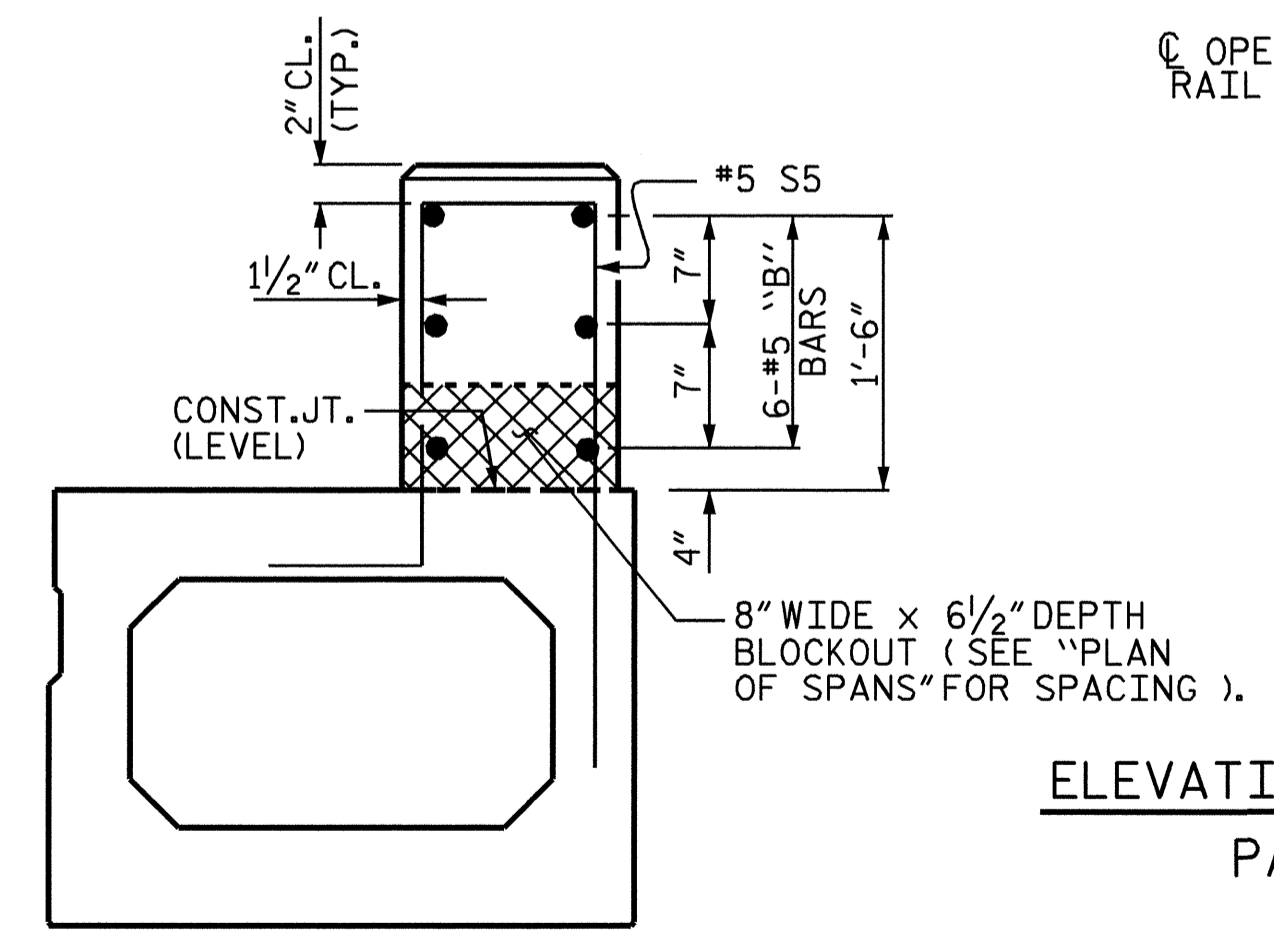
PLAN OF PARAPET
(THE #5 S5 ARE DETAILED WITH BOX BEAM DETAILS.)



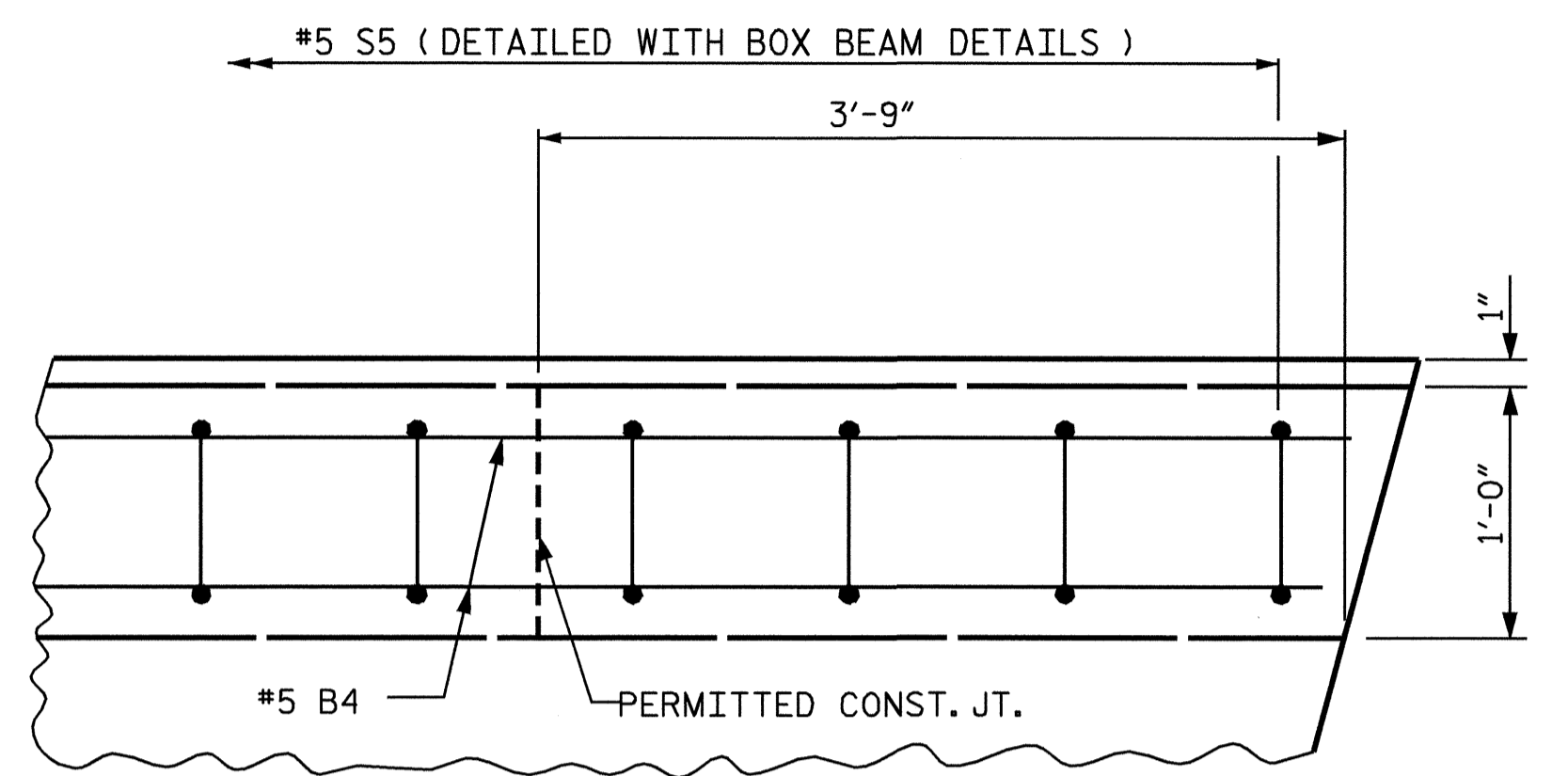
ELEVATION



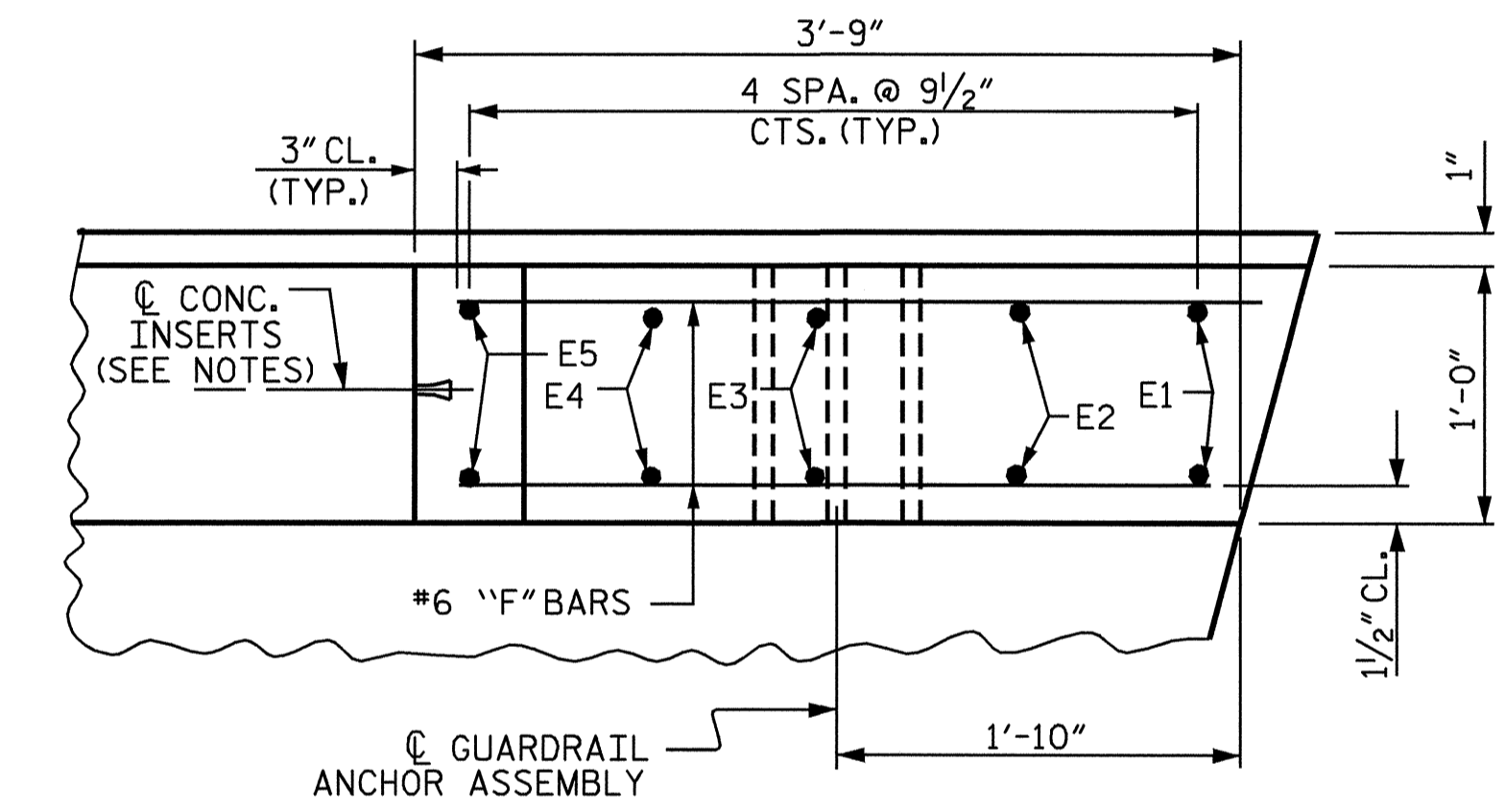
END VIEW



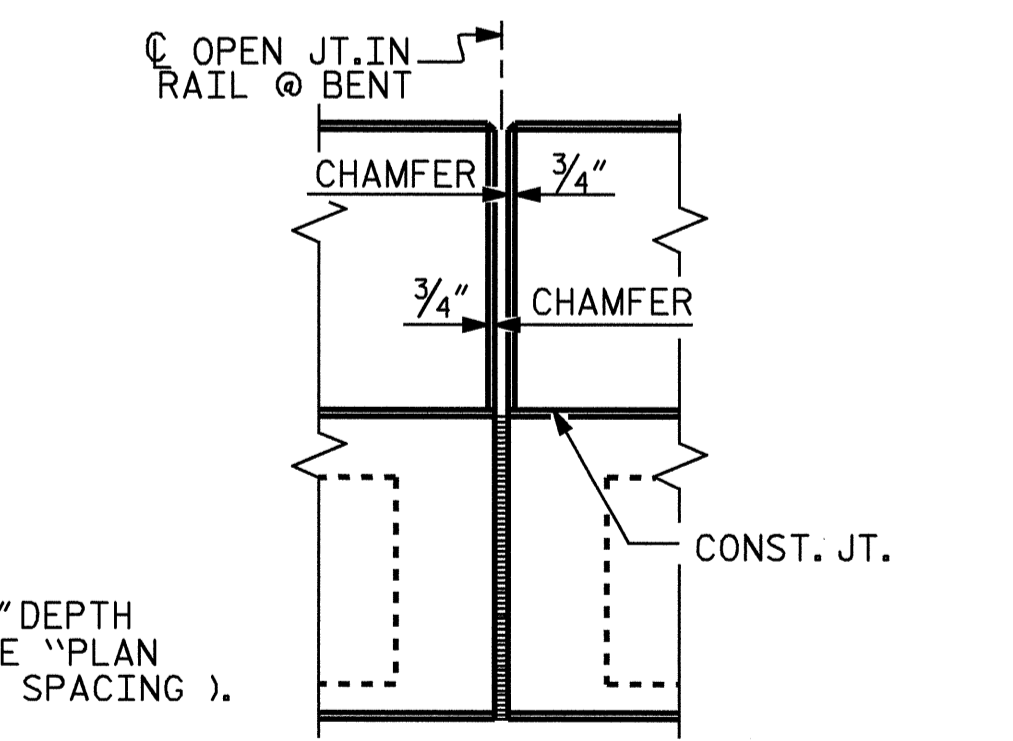
SECTION THRU RAIL



PLAN OF PARAPET



PLAN OF END POST



**ELEVATION AT EXPANSION JOINTS
PARAPET DETAILS**

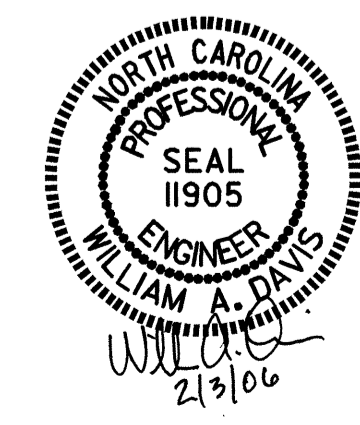
NOTES
FOR DETAILS OF CONCRETE INSERT AND GUARDRAIL ANCHOR ASSEMBLY, SEE "RAIL POST SPACINGS AND END OF RAIL DETAIL" SHEETS.
ALL REINFORCING STEEL IN THE CONCRETE PARAPET SHALL BE EPOXY COATED.
#5 "B" BARS IN PARAPET SHALL BE FIELD CUT WHEN NECESSARY TO AVOID BLOCKOUT.
BLOCKOUT TO BE SHIFTED AS DIRECTED BY THE ENGINEER TO PLACE 8" WIDE BLOCKOUT CENTERED BETWEEN S5 BARS.

BILL OF MATERIAL FOR 2 PARAPETS AND 4 END POSTS

BAR NO.	SIZE	TYPE	LENGTH	WEIGHT	
* B3	24	5	STR	41'-0"	1026
* B4	12	5	STR	38'-6"	482
* E1	8	7	STR	2'-0"	33
* E2	8	7	STR	2'-2"	35
* E3	8	7	STR	2'-4"	38
* E4	8	7	STR	2'-6"	41
* E5	8	7	STR	2'-7"	42
* F1	8	6	STR	3'-7"	41
* F2	8	6	STR	3'-6"	44
* EPOXY COATED REINFORCING STEEL				LBS.	1782

DRAWN BY : J. G. KHARVA DATE : 06/02/05
CHECKED BY : V. NGUYEN DATE : 01/12/06

PARAPET AND END POST FOR ONE-BAR RAIL



PROJECT NO. B-4039
BURKE COUNTY
STATION: 14+12.00 -L-

STATE OF NORTH CAROLINA
DEPARTMENT OF TRANSPORTATION
RALEIGH
SUPERSTRUCTURE
CONCRETE PARAPET
AND
END POST DETAIL
FOR 1 BAR METAL RAIL

REVISIONS				SHEET NO.
NO.	BY:	DATE:	NO.	DATE:
1			3	
2			4	

TOTAL SHEETS: 26