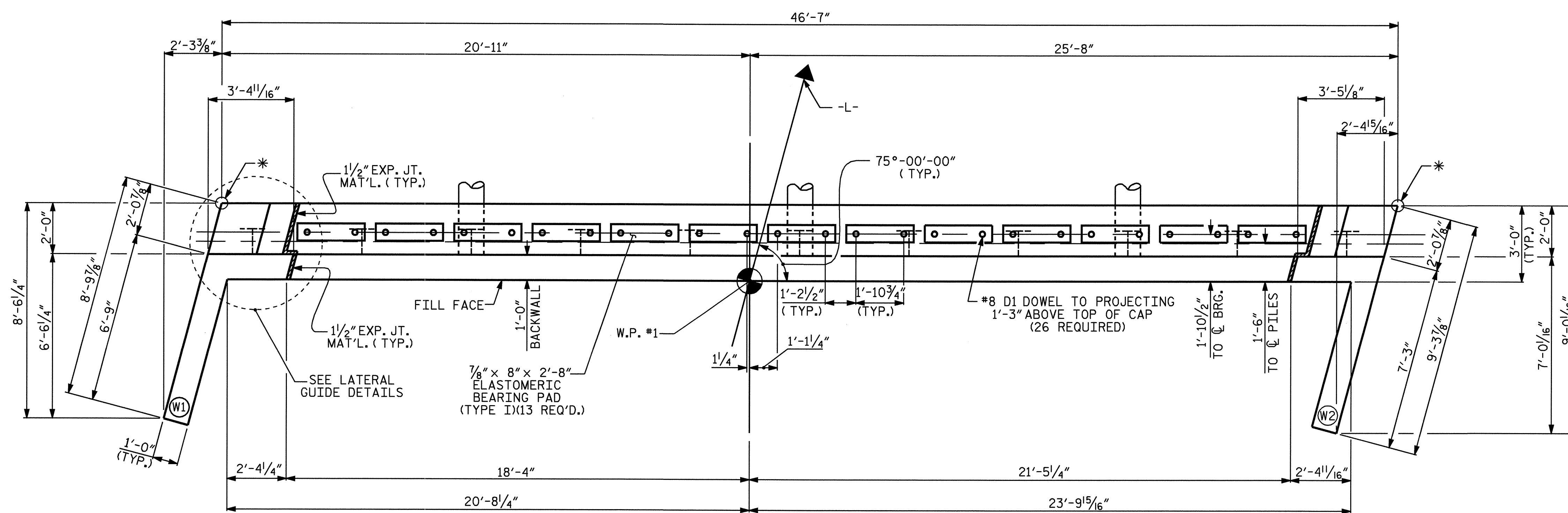


NOTES

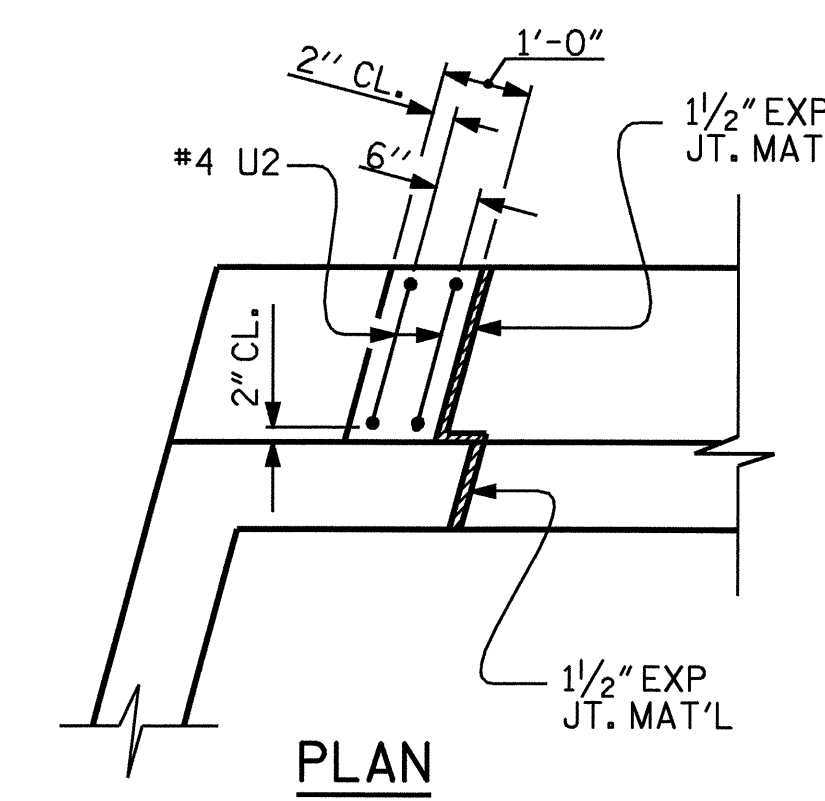
STIRRUPS IN CAP MAY BE SHIFTED AS NECESSARY TO CLEAR ANCHOR BOLTS.

THE CONTRACTOR SHALL PROVIDE FOR INSTALLATION OF THE 4" DIAMETER DRAIN PIPE THROUGH THE WING WALLS REQUIRED FOR REINFORCED BRIDGE APPROACH FILLS, SEE THE ROADWAY PLANS. REINFORCING STEEL IN THE WING WALL MAY BE SHIFTED AS NECESSARY TO CLEAR THE DRAIN PIPE.

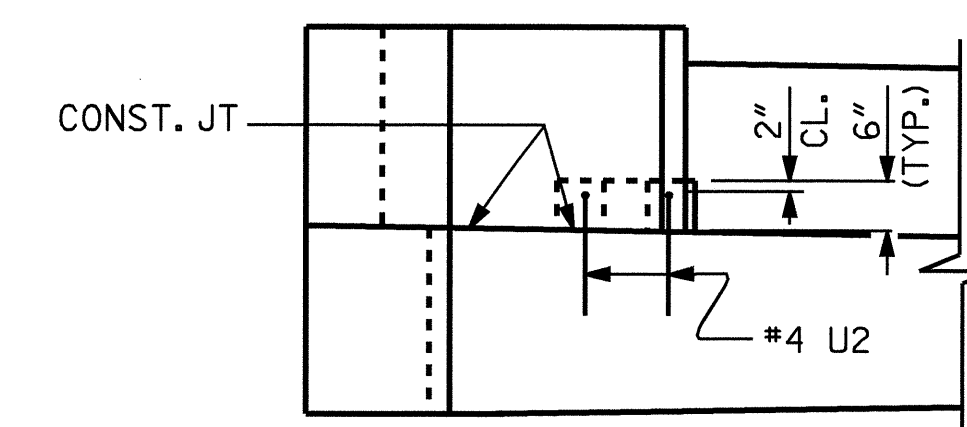
THE LATERAL GUIDE AT EACH END OF THE CAP IS NOT TO BE POURED UNTIL AFTER BOX BEAM UNITS ARE IN PLACE.



PLAN

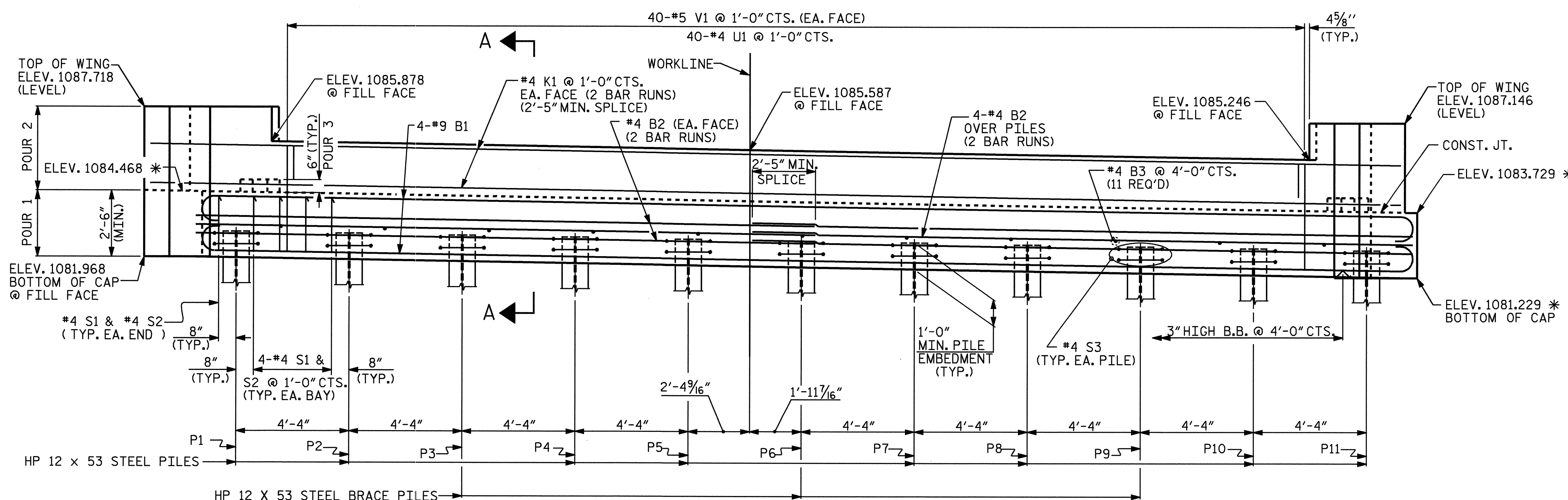


PLAN



ELEVATION

LATERAL GUIDE DETAILS

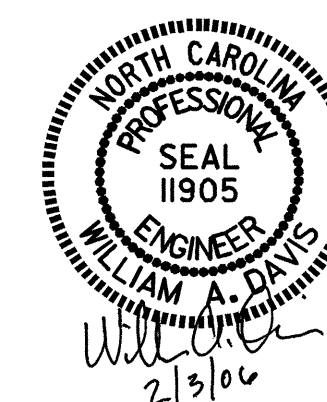


TOP OF PILE ELEVATIONS	
PILE	ELEVATION
P1	1082.942
P2	1082.873
P3	1082.806
P4	1082.737
P5	1082.668
P6	1082.599
P7	1082.530
P8	1082.461
P9	1082.393
P10	1082.324
P11	1082.255

ELEVATION

(FOR WING REINFORCING STEEL & DETAILS, SEE SHEET 2 OF 3)

* ELEVATION AT FRONT FACE OF CAP



PROJECT NO. B-4039
BURKE COUNTY
STATION: 14+12.00 -L-

SHEET 1 OF 3

STATE OF NORTH CAROLINA
DEPARTMENT OF TRANSPORTATION
RALEIGH

SUBSTRUCTURE
END BENT #1

REVISIONS

NO.	BY:	DATE:	NO.	BY:	DATE:
1			3		
2			4		

SHEET NO.
S-16
TOTAL SHEETS
26

DRAWN BY: G.O. COOPER DATE: 10/29/05
CHECKED BY: J.G. KHARVA DATE: 12/29/05