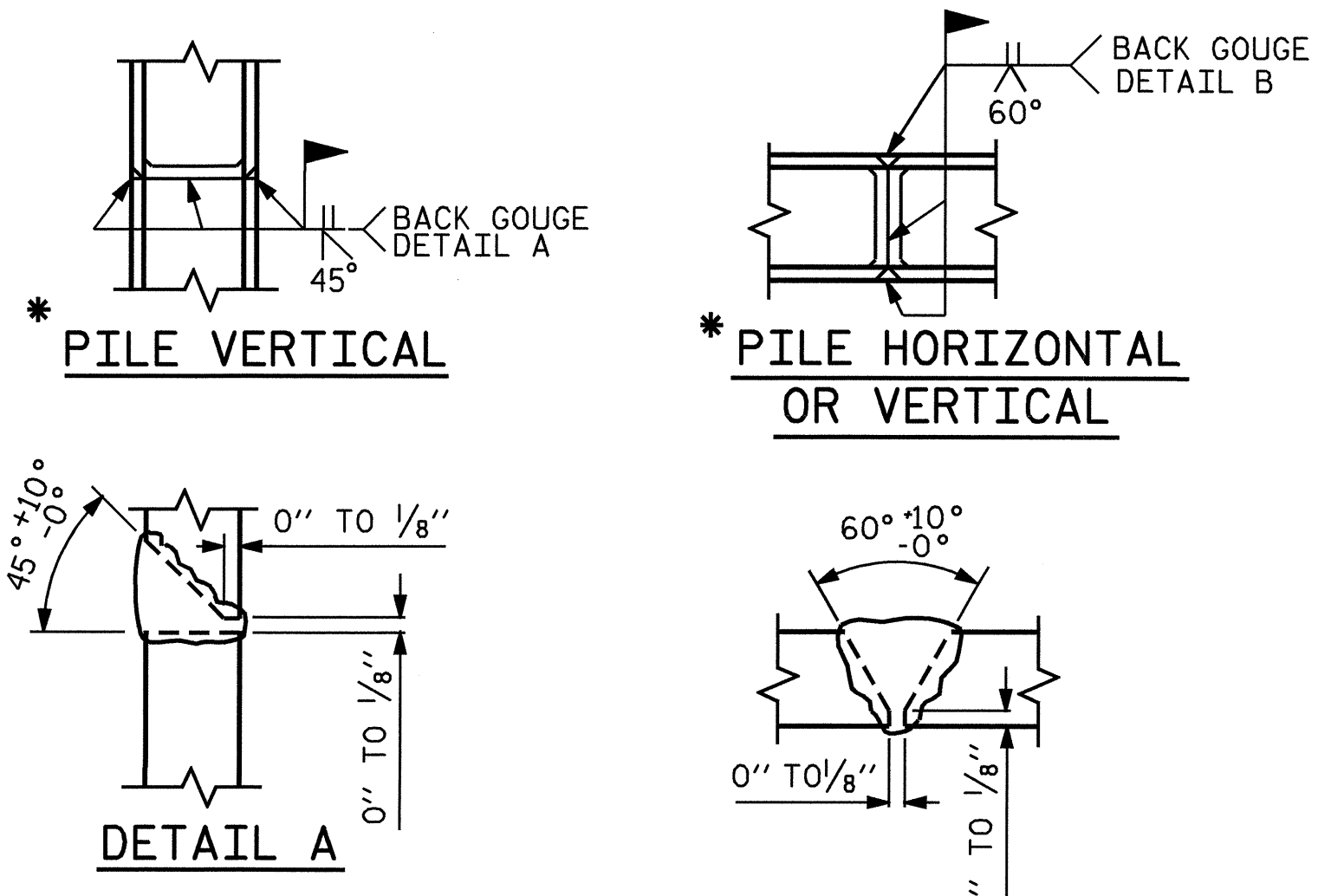
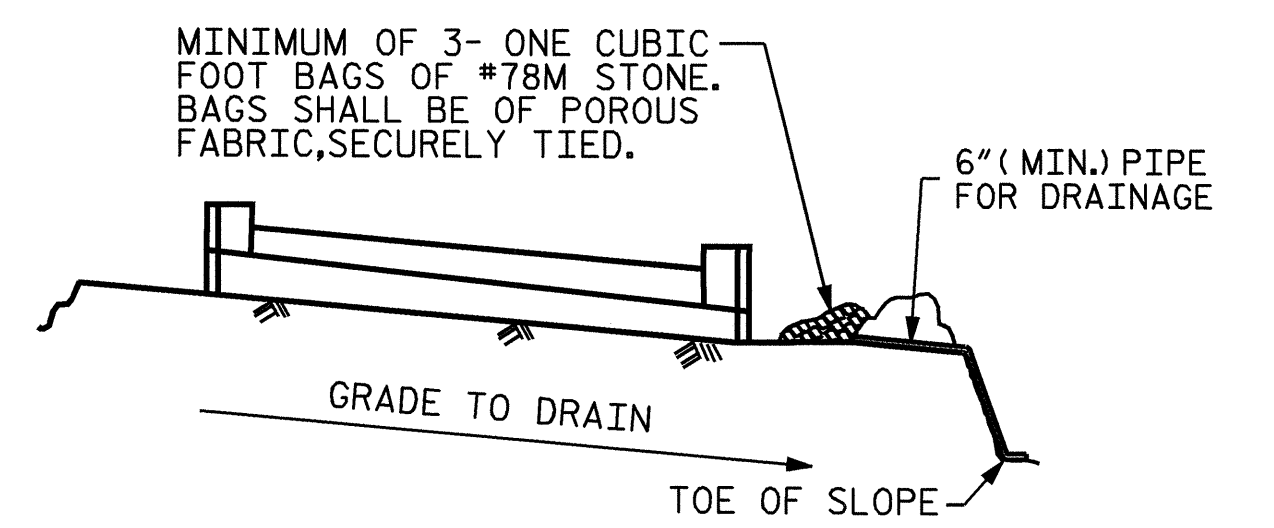


SECTION A-A



PILE SPLICE DETAILS

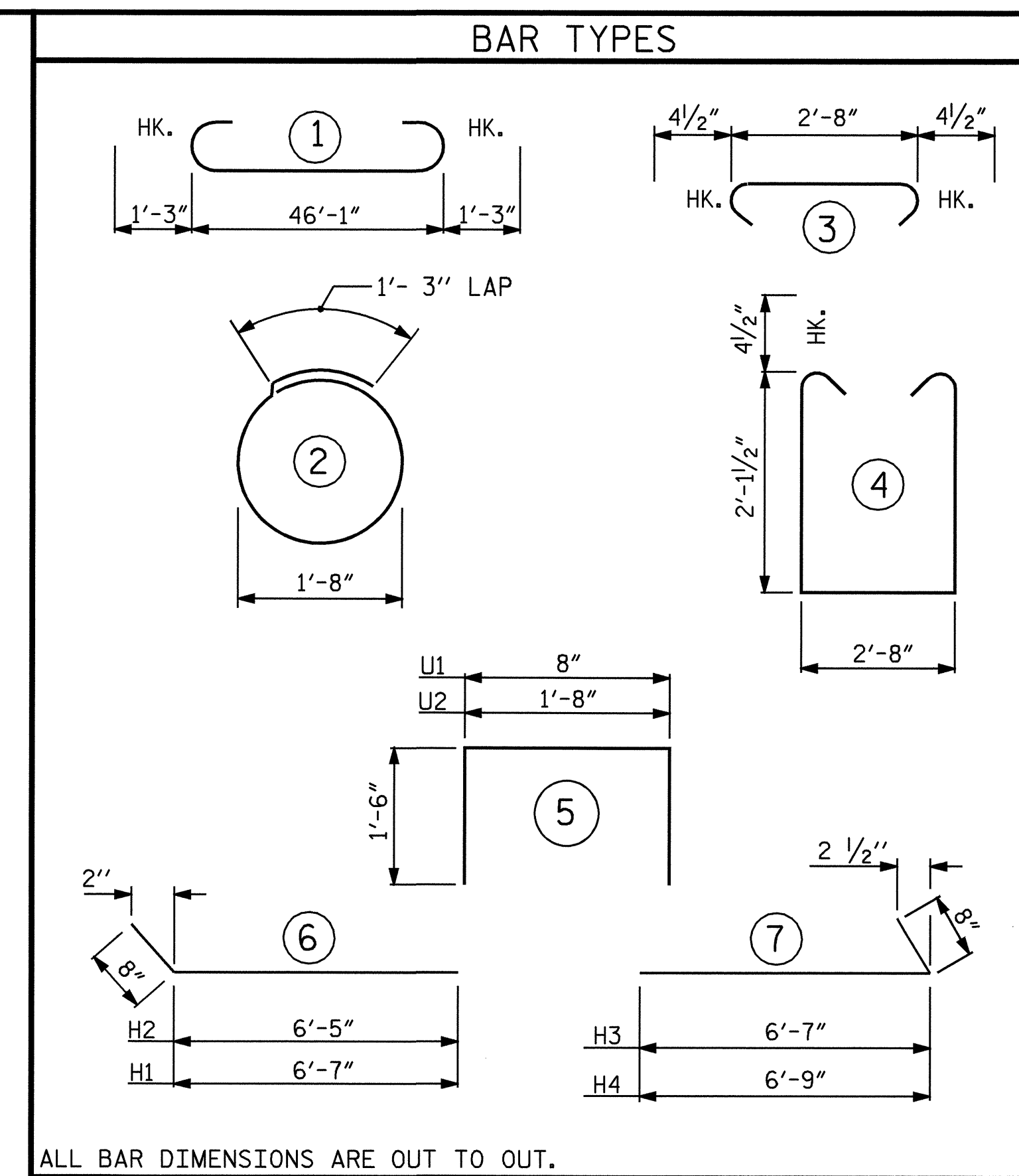


BAGGED STONE AND PIPE SHALL BE PLACED IMMEDIATELY AFTER COMPLETION OF END BENT EXCAVATION. PIPE MAY BE EITHER CONCRETE, CORRUGATED STEEL, CORRUGATED ALUMINUM ALLOY, OR CORRUGATED PLASTIC. PERFORATED PIPE WILL NOT BE ALLOWED.

BAGGED STONE SHALL REMAIN IN PLACE UNTIL THE ENGINEER DIRECTS THAT IT BE REMOVED. THE CONTRACTOR SHALL REMOVE AND DISPOSE OF SILT ACCUMULATIONS AT BAGGED STONE WHEN SO DIRECTED BY THE ENGINEER. BAGS SHALL BE REMOVED AND REPLACED WHENEVER THE ENGINEER DETERMINES THAT THEY HAVE DETERIORATED AND LOST THEIR EFFECTIVENESS.

NO SEPARATE PAYMENT WILL BE MADE FOR THIS WORK AND THE ENTIRE COST OF THIS WORK SHALL BE INCLUDED IN THE UNIT CONTRACT PRICE BID FOR THE SEVERAL PAY ITEMS.

TEMPORARY DRAINAGE AT END BENT



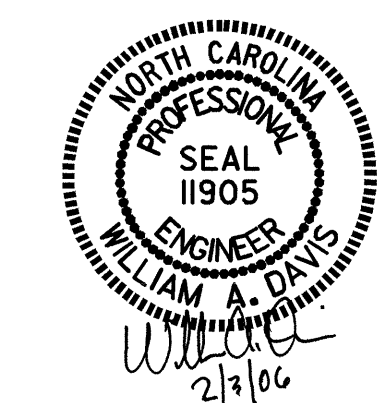
ALL BAR DIMENSIONS ARE OUT TO OUT.

SPLICE LENGTH CHART

BAR	SIZE	SPLICE LENGTH
B2	#4	2'-5"

BILL OF MATERIAL

END BENT #1					
BAR	NO.	SIZE	TYPE	LENGTH	WEIGHT
B1	8	#9	1	48'-7"	1321
B2	16	#4	STR	24'-4"	260
B3	11	#4	STR	2'-8"	20
D1	26	#8	STR	2'-3"	156
H1	7	#5	6	7'-3"	53
H2	7	#5	6	7'-1"	52
H3	7	#5	7	7'-3"	53
H4	7	#5	7	7'-5"	54
K1	8	#4	STR	24'-4"	130
K2	8	#4	STR	3'-0"	16
S1	42	#4	4	7'-8"	215
S2	42	#4	3	3'-5"	96
S3	22	#4	2	6'-6"	96
U1	40	#4	5	3'-8"	98
U2	4	#4	5	4'-8"	12
V1	80	#5	STR	3'-6"	292
V2	22	#4	STR	5'-4"	78
V3	22	#4	STR	5'-6"	81
REINFORCING STEEL					LBS. 3083
CLASS A CONC. BREAKDOWN					
POUR 1 CAP					C.Y. 14.1
POUR 2 WINGS & BACKWALL					C.Y. 4.5
POUR 3 LATERAL GUIDE					C.Y. 0.1
TOTAL					C.Y. 18.7
HP 12 X 53 STEEL PILES					
NO. 11					LIN. FT. 330
STEEL PILE POINTS					EACH 11



PROJECT NO. B-4039
BURKE COUNTY
STATION: 14+12.00 -L-

SHEET 3 OF 3
STATE OF NORTH CAROLINA
DEPARTMENT OF TRANSPORTATION
RALEIGH
SUBSTRUCTURE
END BENT #1

REVISIONS						SHEET NO.
NO.	BY:	DATE:	NO.	BY:	DATE:	S-18
1			3			TOTAL SHEETS
2			4			26