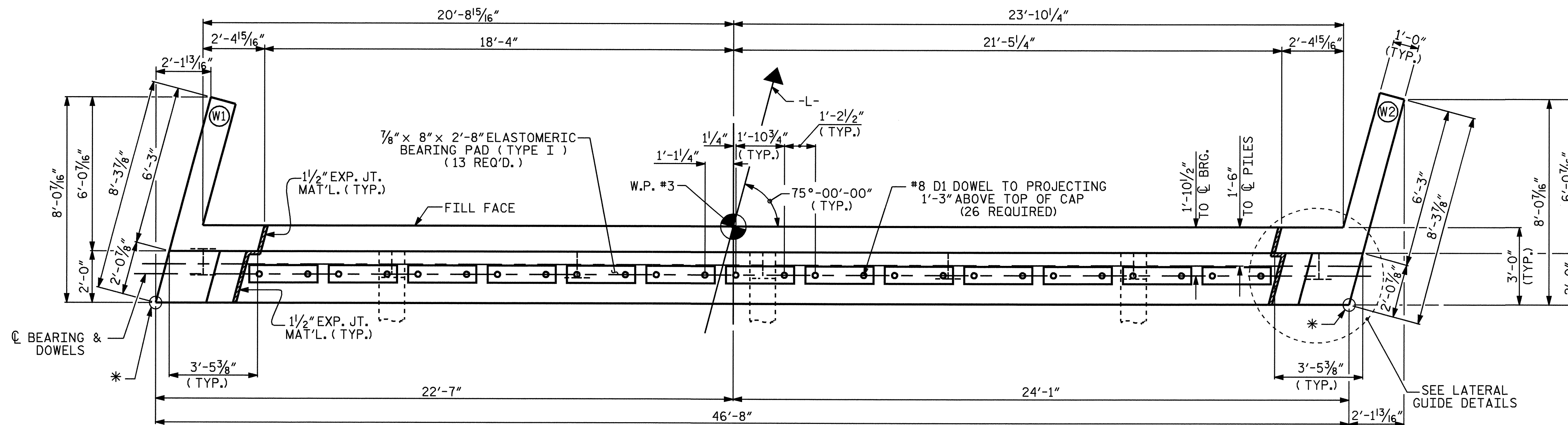


NOTES

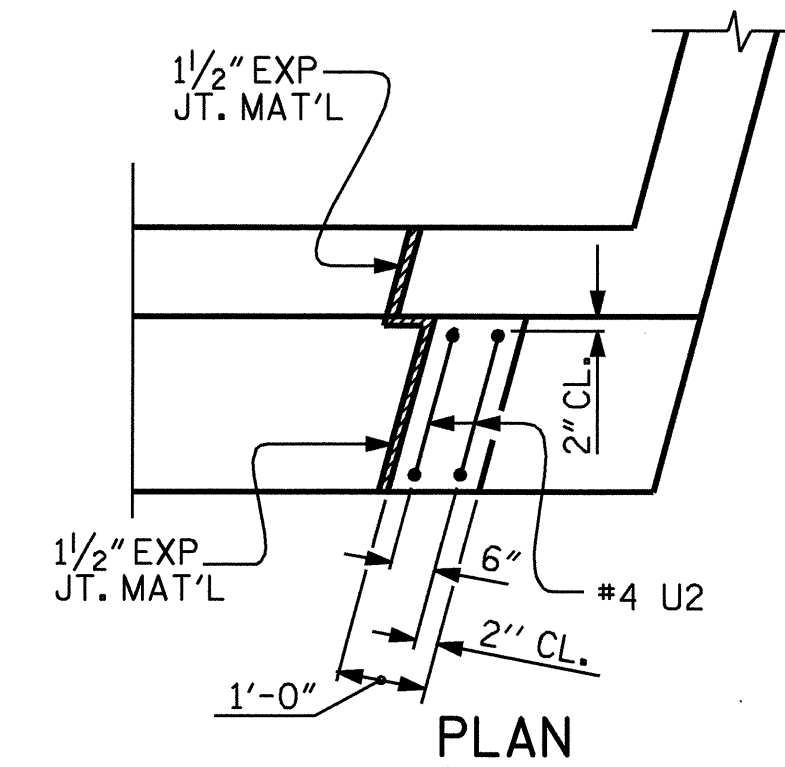
STIRRUPS IN CAP MAY BE SHIFTED AS NECESSARY TO CLEAR DOWELS.

THE CONTRACTOR SHALL PROVIDE FOR INSTALLATION OF THE 4" DIAMETER DRAIN PIPE THROUGH THE WING WALLS REQUIRED FOR REINFORCED BRIDGE APPROACH FILLS, SEE THE ROADWAY PLANS. REINFORCING STEEL IN THE WING WALL MAY BE SHIFTED AS NECESSARY TO CLEAR THE DRAIN PIPE.

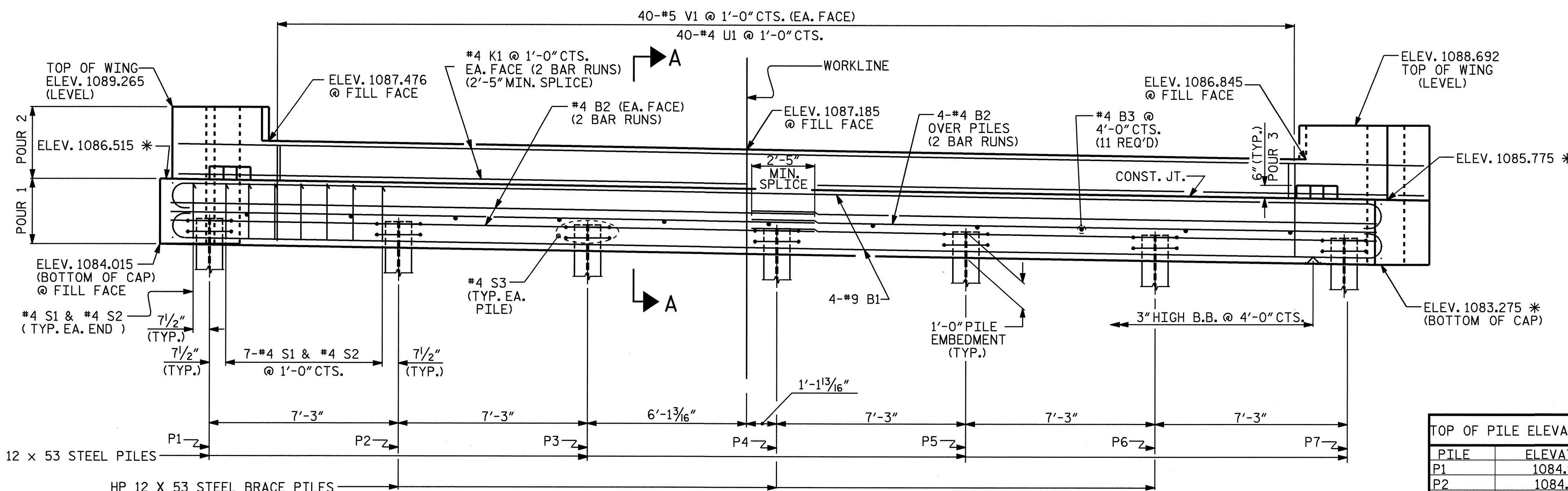
THE LATERAL GUIDE AT EACH END OF THE CAP IS NOT TO BE POURED UNTIL AFTER BOX BEAM UNITS ARE IN PLACE.



PLAN



PLAN

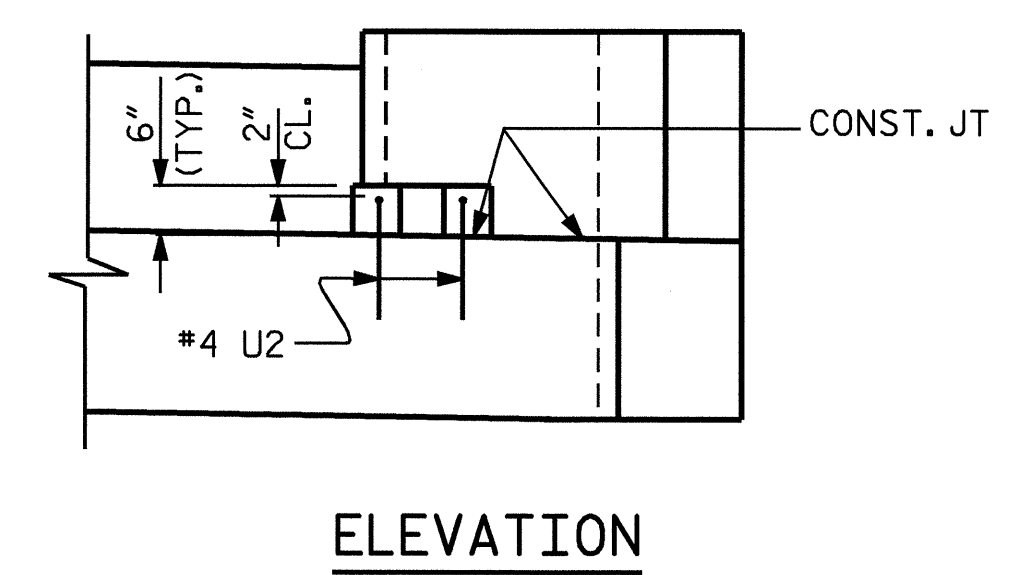


ELEVATION

(FOR WING REINFORCING STEEL & DETAILS, SEE SHEET 2 OF 3)

* ELEVATION AT FRONT FACE OF CAP

| PILE | ELEVATION |
|------|-----------|
| P1 | 1084.988 |
| P2 | 1084.873 |
| P3 | 1084.758 |
| P4 | 1084.642 |
| P5 | 1084.527 |
| P6 | 1084.412 |
| P7 | 1084.297 |



ELEVATION

LATERAL GUIDE DETAILS

PROJECT NO. B-4039
 BURKE COUNTY
 STATION: 14+12.00 -L-

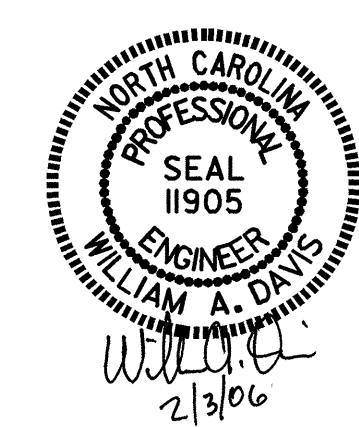
SHEET 1 OF 3

STATE OF NORTH CAROLINA
 DEPARTMENT OF TRANSPORTATION
 RALEIGH

SUBSTRUCTURE
 END BENT #2

| REVISIONS | | | | | |
|-----------|-----|-------|-----|-----|-------|
| NO. | BY: | DATE: | NO. | BY: | DATE: |
| 1 | | | 3 | | |
| 2 | | | 4 | | |

SHEET NO. S-21
 TOTAL SHEETS 26



DRAWN BY: G.O. COOPER DATE: 10/29/05
 CHECKED BY: J.G. KHARVA DATE: 12/29/05