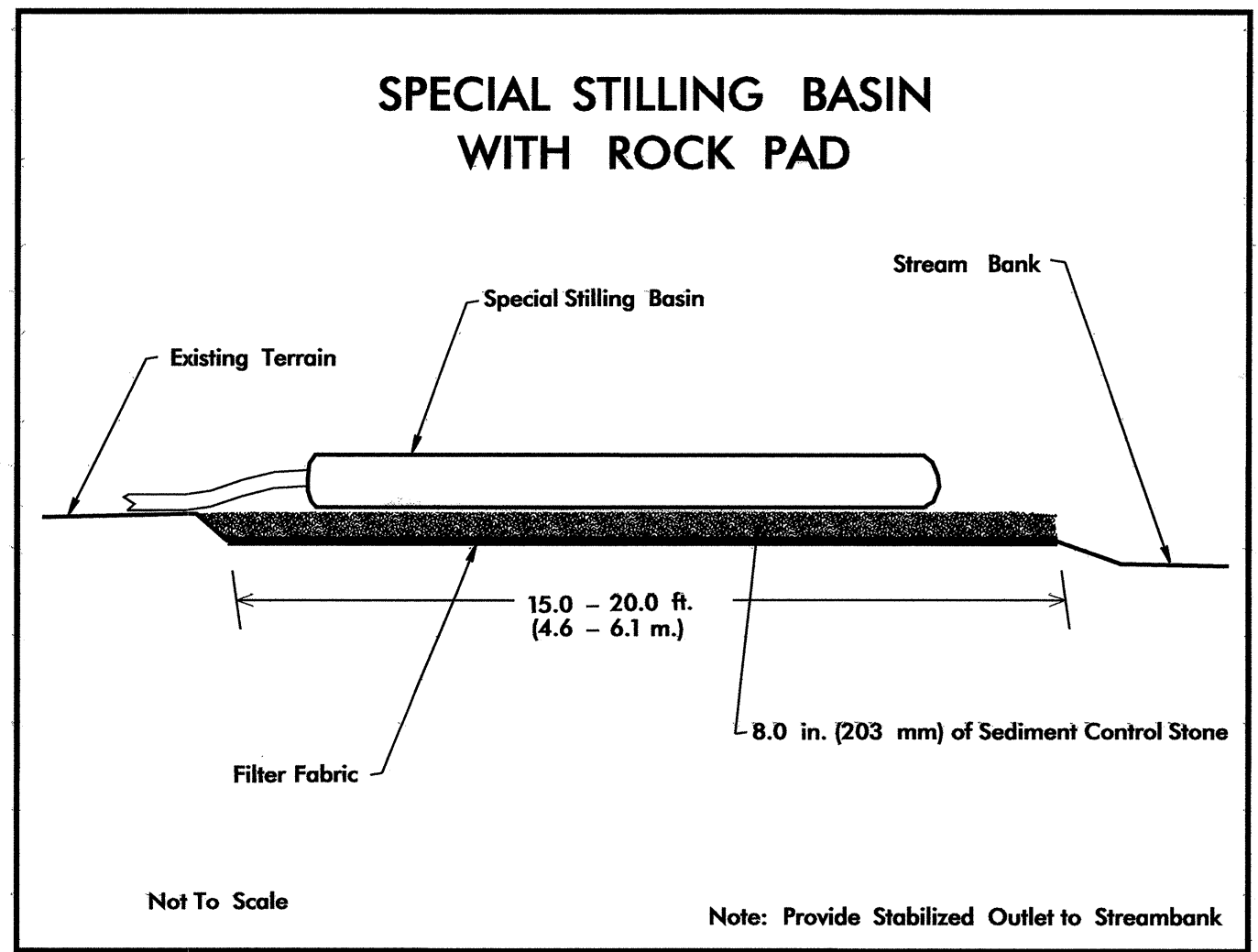


PROJECT REFERENCE NO.		SHEET NO.	
B-4039		EC-4/CONST.4	
RW SHEET NO.			
ROADWAY DESIGN ENGINEER		HYDRAULICS ENGINEER	

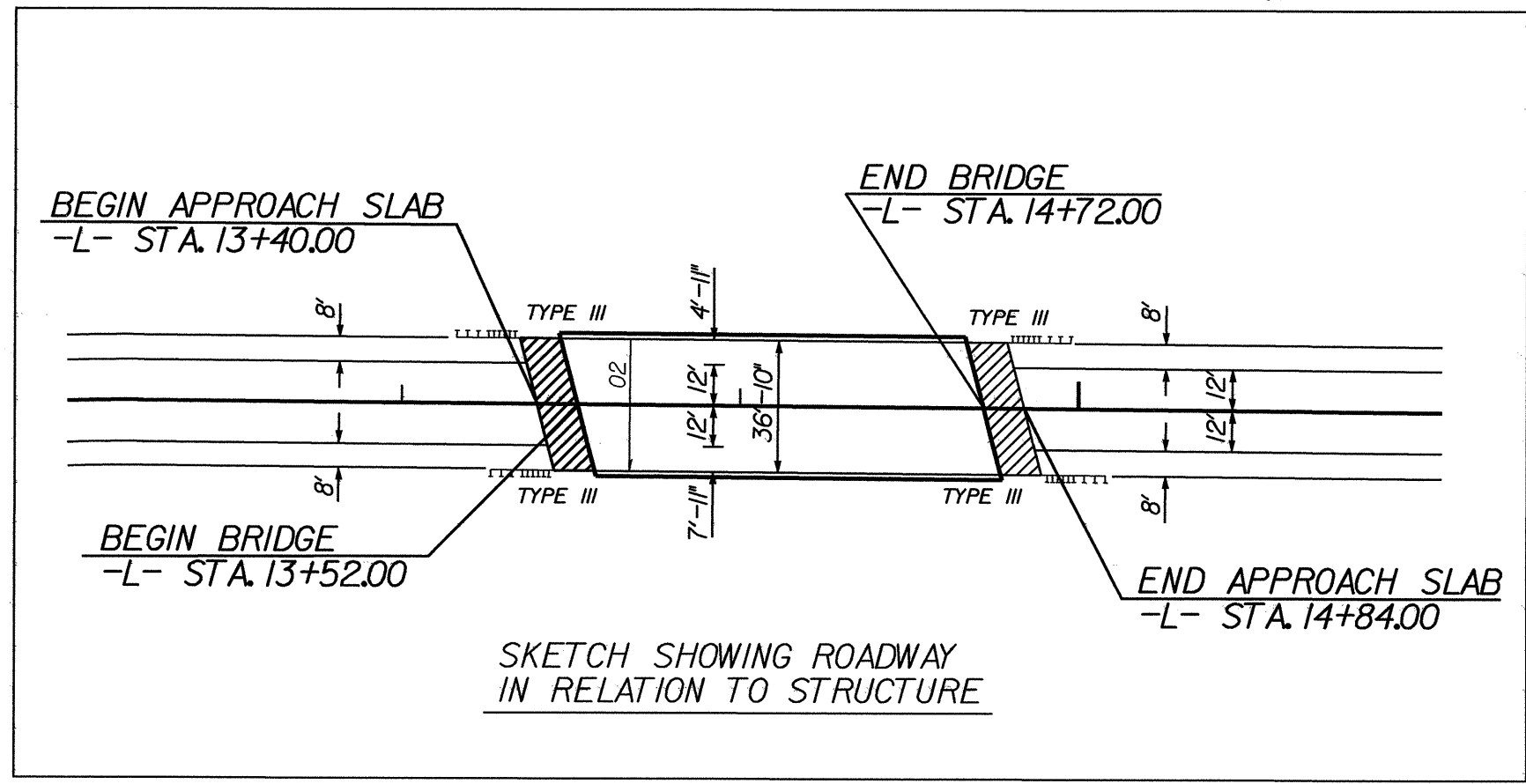
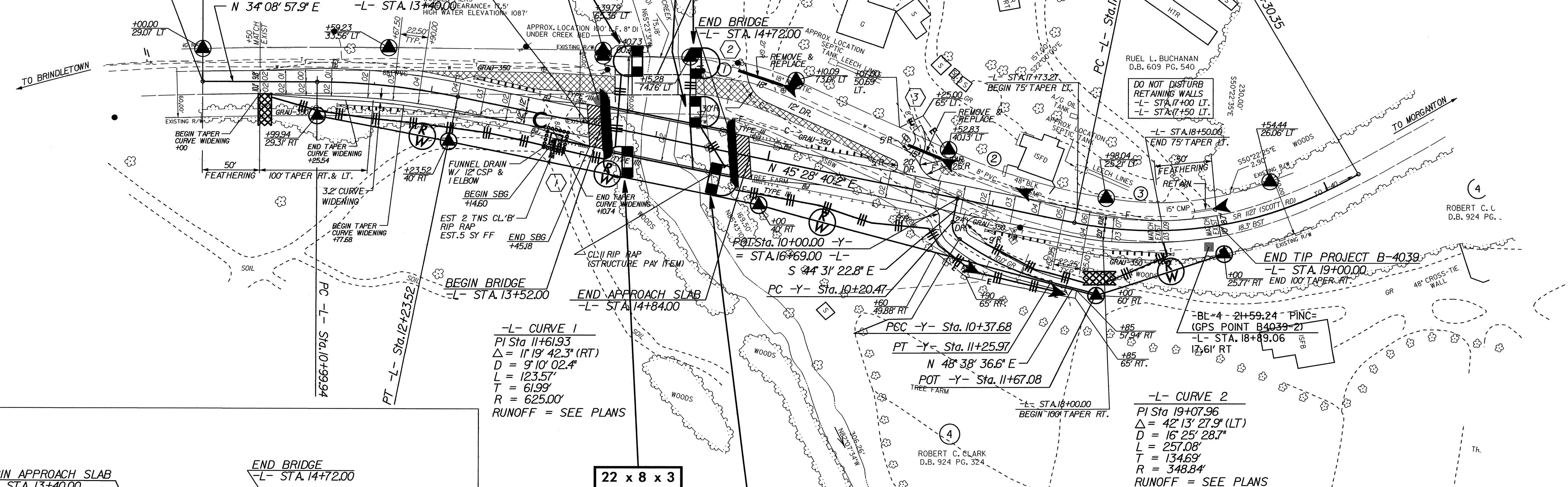
** DESIGN EXCEPTION FOR HORIZONTAL ALIGNMENT

NOTE: UTILIZE SPECIAL STILLING BASIN AND TEMPORARY ROCK SEDIMENT DAM TYPE - B AS STILLING BASIN WHERE APPLICABLE.



DATUM DESCRIPTION
 THE LOCALIZED COORDINATE SYSTEM DEVELOPED FOR THIS PROJECT IS BASED ON THE STATE PLANE COORDINATES ESTABLISHED BY NCDOT FOR MONUMENT "B-4039-2".
 W/CD NAD 83 STATE PLANE GRID COORDINATES OF PERRY EDWIN MCGEE
 NORTHING: 715337.565(11) EASTING: 1169038.292(11)
 THE AVERAGE COMBINED GRID FACTOR USED ON THIS PROJECT (GROUND TO GRID) IS: 0.999848359
 THE N.C. LAMBERT GRID BEARING AND LOCALIZED HORIZONTAL GROUND DISTANCE FROM "B-4039-2" TO L- STATION IS

BEGIN TIP PROJECT B-4039
 -L- STA. 10+00.00
 BEGIN 100' TAPER RT.



-L- CURVE 1
 PI Sta 11+61.93
 $\Delta = 119^\circ 42.3' (RT)$
 $D = 9^\circ 10' 02.4''$
 $L = 123.57'$
 $T = 61.99'$
 $R = 625.00'$
 RUNOFF = SEE PLANS

-L- CURVE 2
 PI Sta 19+07.96
 $\Delta = 42^\circ 13' 27.9' (LT)$
 $D = 16^\circ 25' 28.7''$
 $L = 257.08'$
 $T = 134.69'$
 $R = 348.84'$
 RUNOFF = SEE PLANS

-Y- CURVE 1
 PI Sta 10+30.17
 $\Delta = 65^\circ 45' 27.0' (LT)$
 $D = 38^\circ 58' 18.7''$
 $L = 17.22'$
 $T = 9.70'$
 $R = 15.00'$

-Y- CURVE 2
 PI Sta 10+82.33
 $\Delta = 21^\circ 04' 33.6' (LT)$
 $D = 23^\circ 52' 23.6''$
 $L = 88.28'$
 $T = 44.65'$
 $R = 240.00'$

SBG - DENOTES SHOULDER-BERM-GUTTER
 [Cross-hatched symbol] DENOTES PAVEMENT REMOVAL
 [Hatched symbol] DENOTES APPROACH SLAB
 FOR -L- PROFILE SEE SHEET NO.5
 FOR -Y- PROFILE SEE SHEET NO.5
 SEE SHEETS S-I THRU S- FOR STRUCTURE PLANS

u_psh.ec.dgn