

DATUM DESCRIPTION
 THE LOCALIZED COORDINATE SYSTEM DEVELOPED FOR THIS PROJECT IS BASED ON THE STATE PLANE COORDINATES ESTABLISHED BY NC DEPT. OF ENVIRONMENTAL AND NATURE RESOURCES GEODETIC SURVEY SECTION FOR THE "FAYR" CORNER STATION AT FAYETTEVILLE, HAVING NAD83 GRID COORDINATES OF NORTHING 42,254,646.89, EASTING 108,666,477.69.
 NGVD ORTHO ELEVATION OF 164.387 FEET. THE AVERAGE COMBINED GRID FACTOR USED ON THIS PROJECT GROUND TO GRID IS 0.9998669.
 THE N.C. LAMBERT GRID BEARING AND DISTANCE FROM "FAYR" CORNER TO BL #2 IS S 14 10' 00" W 42,702.256 FEET.
 ALL LINEAR DIMENSIONS ARE LOCALIZED HORIZONTAL DISTANCES. VERTICAL DATUM USED IS NGVD 29.

TOPOGRAPHICAL SURVEY PROVIDED BY:
 MICHAEL TATE, PROFESSIONAL LAND SURVEYOR
 3521 CLINTON ROAD, FAYETTEVILLE, N.C. 28501
 PH: 910-681-7587

GRID NAD 83

PI Sta 10+71.43
 $\Delta = 34^{\circ} 30' 28.0" (LT)$
 $D = 24^{\circ} 54' 40.4"$
 $L = 138.52'$
 $T = 71.43'$
 $R = 230.00'$

-L-POT Sta. 10+00.00
 N 42°34'55.44" E 2027968.5240

BEATRICE JACKSON, TRUSTEE
 DB 4550, PG 571

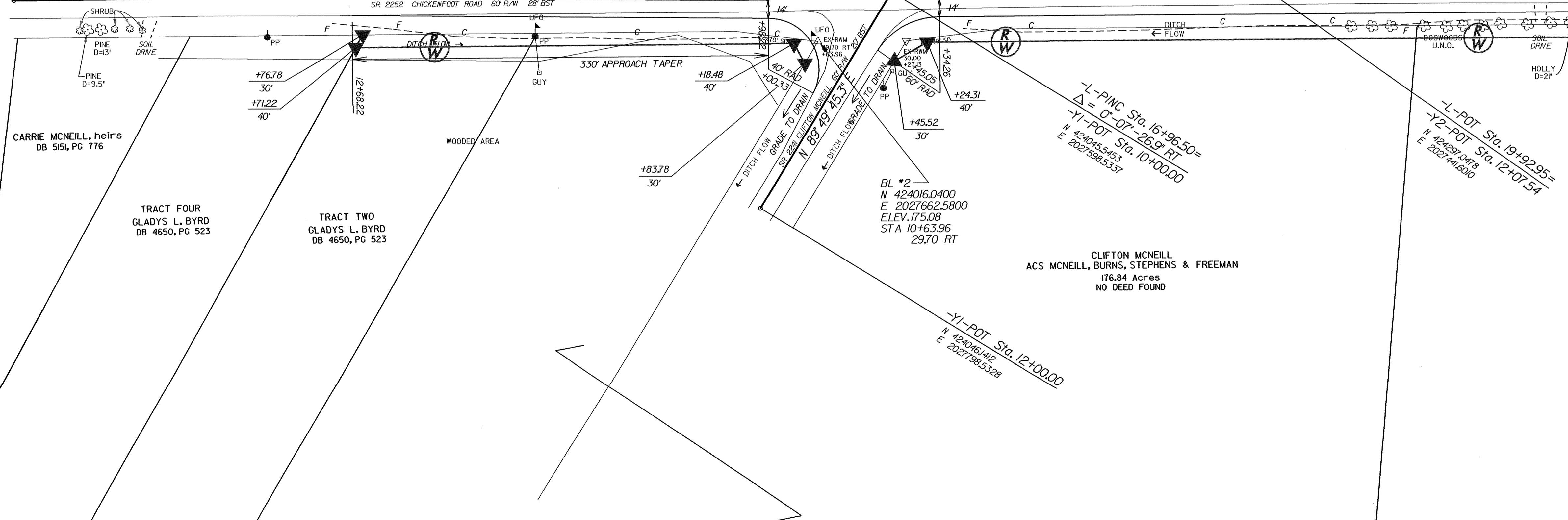
MARION C. GEORGE, JR.
 DB 2774, PG III

ROBERT J. FAULER &
 IRENE M. FAULER
 DB 4124, PG 755

DEBORAH G. KURZENDOERFER
 DB 5047, PG 82

ESTERLENE LILLY
 DB 4614, PG 182

ALL WORK FROM NC 20 TO -L- STA. 12+70 IS NOT SHOWN ON A PLAN SHEET. IT IS REFLECTED IN THE QUANTITIES ON SHEET 3 UNDER THE PROJECT NUMBERS 31339 AND 37977.



BL #2
 N 42°40'16.0400
 E 2027662.5800
 ELEV. 175.08
 STA 10+63.96
 29.70 RT

CLIFTON MCNEILL
 ACS MCNEILL, BURNS, STEPHENS & FREEMAN
 176.84 Acres
 NO DEED FOUND

-Y1-POT Sta. 12+00.00
 N 42°40'16.04" E 2027798.5328

-L-PINC Sta. 16+96.50
 $\Delta = 0^{\circ}-07'-26.9" RT$
 -Y1-POT Sta. 10+00.00
 N 42°40'16.04" E 2027798.5337

-L-POT Sta. 19+92.95
 -Y2-POT Sta. 12+07.54
 N 42°40'16.04" E 2027798.5310

MATCHLINE
 STA. 22+35.51 -L-