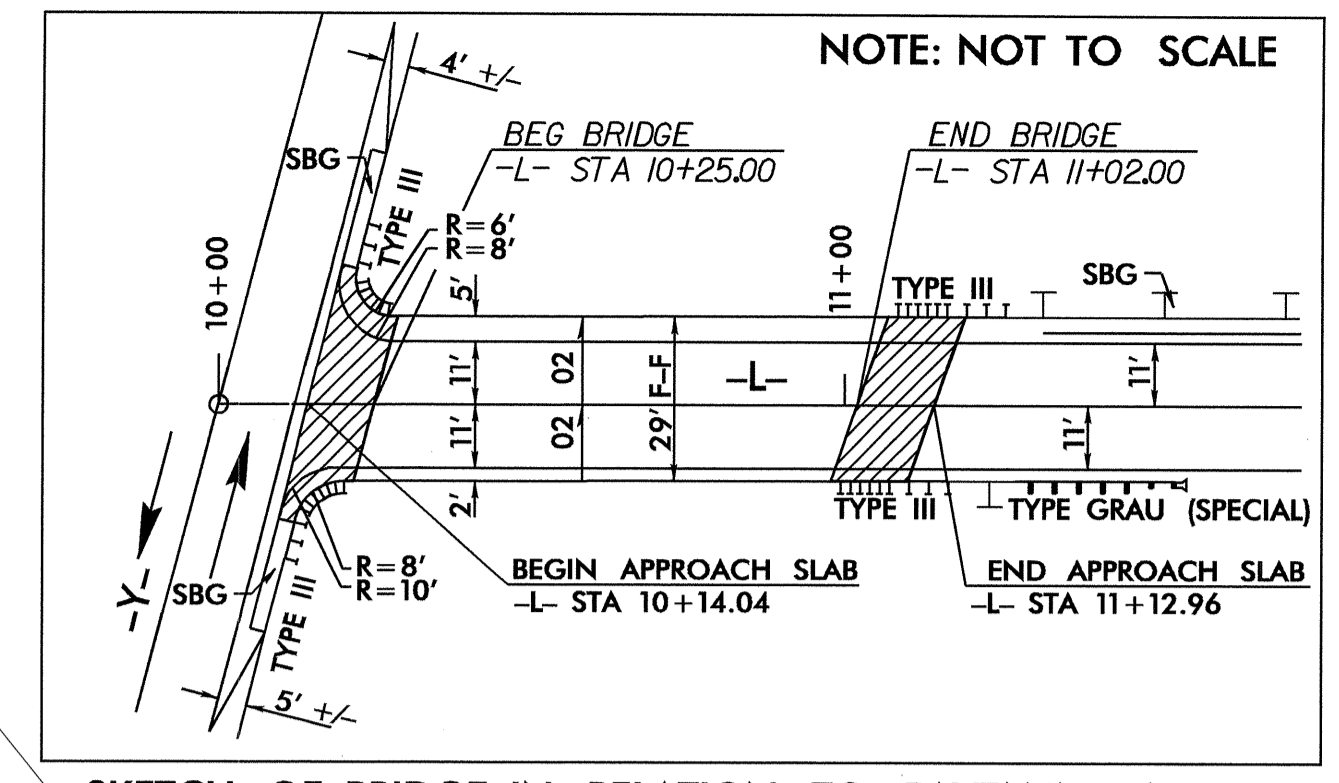


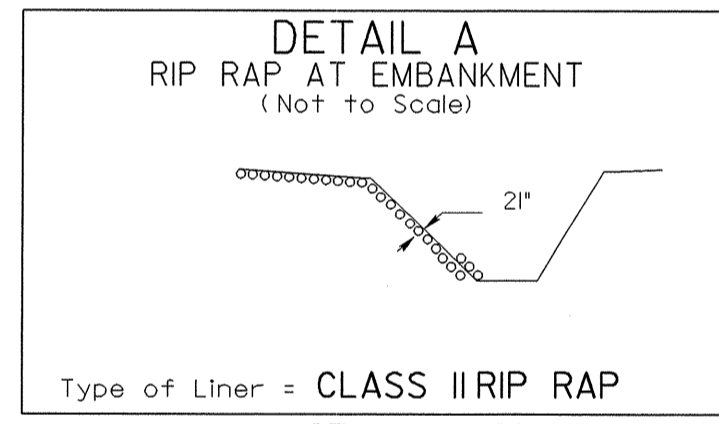
5/14/99

PROJECT REFERENCE NO. B-3805		SHEET NO. 4
RW SHEET NO.		
ROADWAY DESIGN ENGINEER NORTH CAROLINA PROFESSIONAL ENGINEER SEAL 25873 DATE 10/14/05	HYDRAULICS ENGINEER NORTH CAROLINA PROFESSIONAL ENGINEER SEAL 12575 DATE 10/14/05	

SCALE: 1" = 30'



SKETCH OF BRIDGE IN RELATION TO PAVEMENT WIDTH OVER BUFFALO CREEK



BEGIN TIP PROJECT B-3805

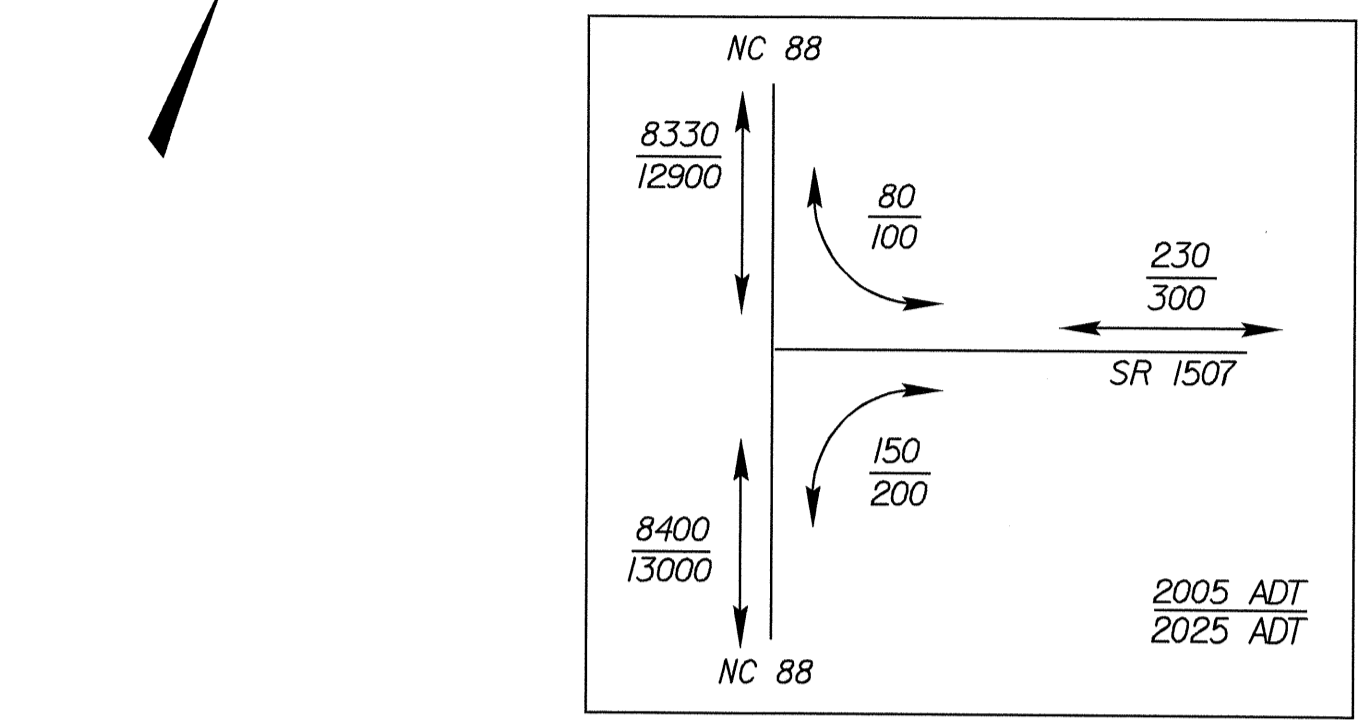
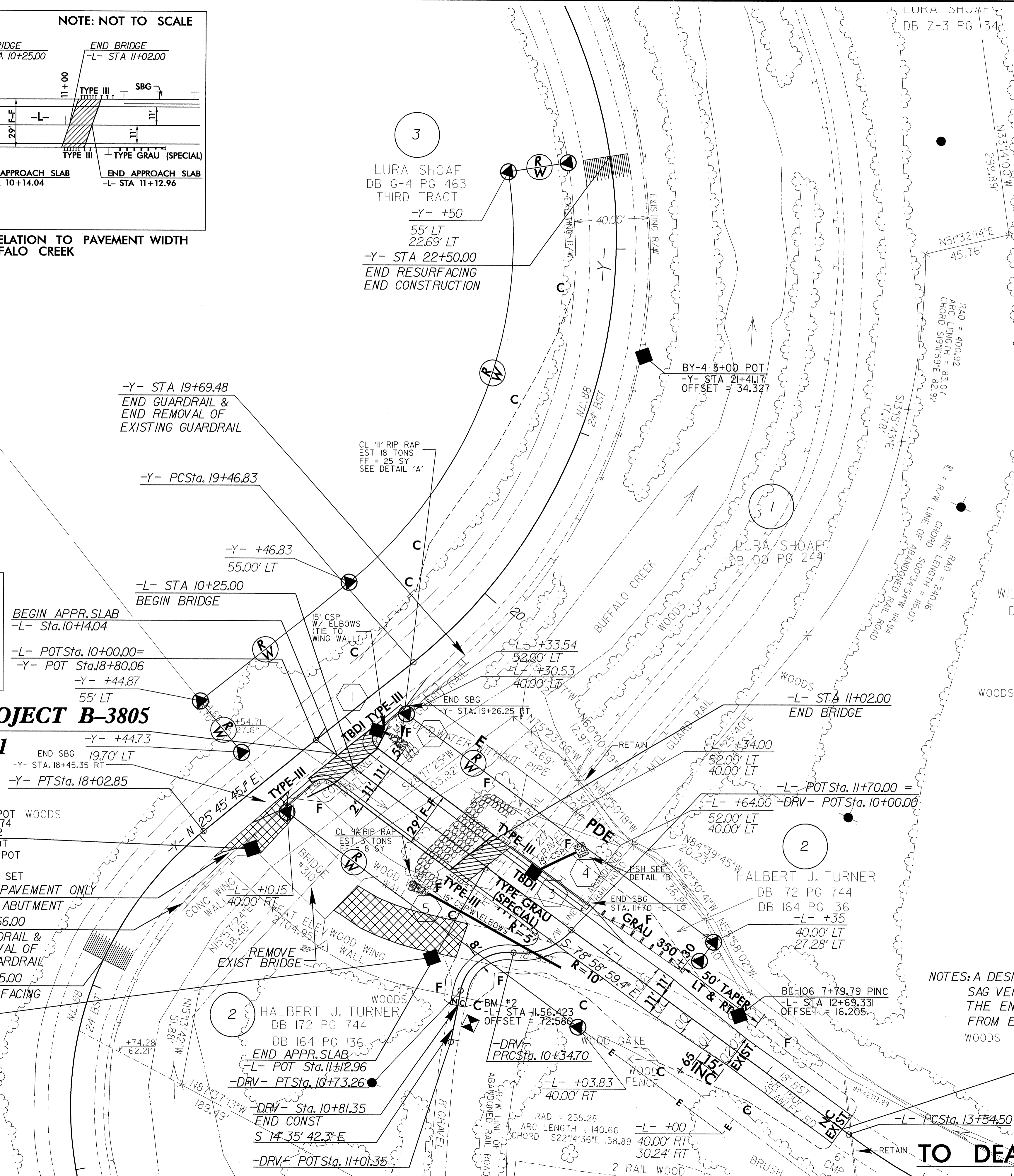
-L- STA 10+12.11

CLARENCE D HART
JAMES D BOLICK
DB 243 PG 1617

- BL-1 5+00.00 POT WOODS
- L- STA 10+06.574
- OFFSET = 66.762
- BY- 8+36.02 POT
- TI- 101 5+00.00 POT
- ELEV=2707.38
- REBAR AND CAP SET
- REMOVE EXIST PAVEMENT ONLY
- RETAIN BRIDGE ABUTMENT
- Y- STA 17+66.00
- BEGIN GUARDRAIL & BEGIN REMOVAL OF EXISTING GUARDRAIL
- Y- STA 17+15.00
- BEGIN RESURFACING

BL-105 6+12.60 PINC
-L- STA 11+18.69
OFFSET = 56.32
-DRV- STA 10+65.01
OFFSET = 20.84

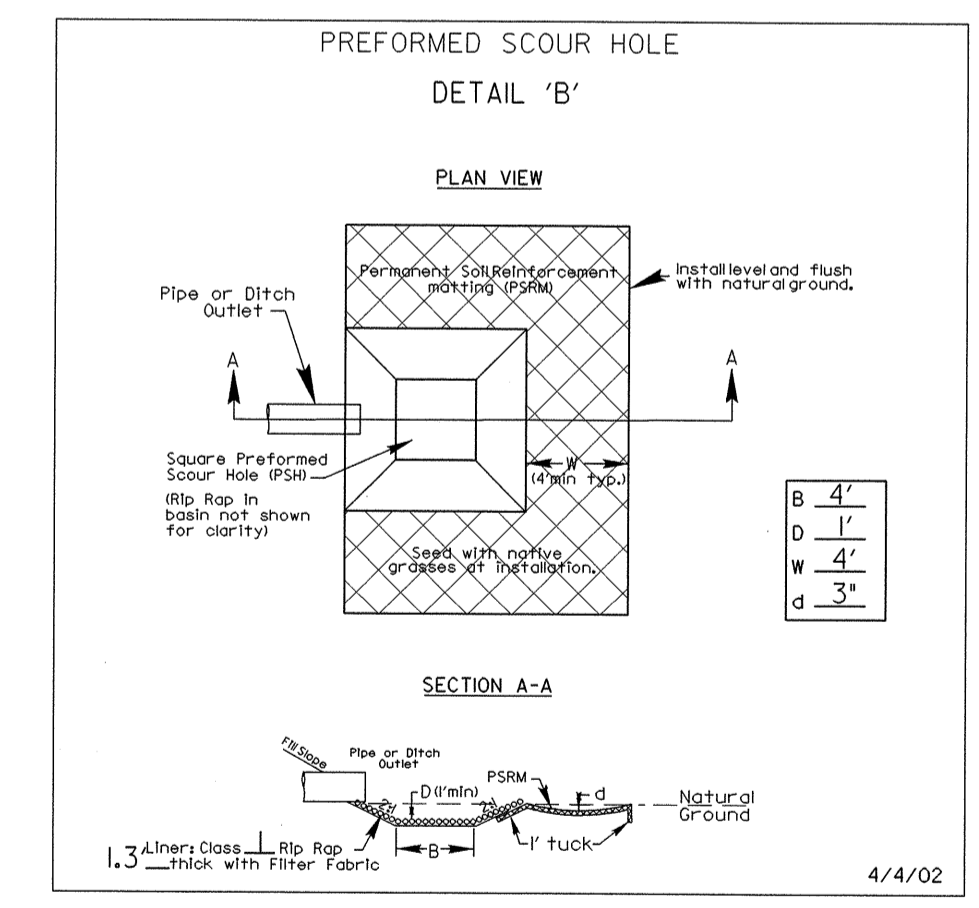
13-001-2005 11/24/05 medj-dsm-psh04.dgn



PI Sta 13+91.62 $\Delta = 20' 18' 57.7''$ (LT) D = 16' 19' 13.2" L = 124.48' T = 62.90' R = 351.07' SE = EXIST	PI Sta 16+96.87 $\Delta = 80' 14' 41.7''$ (RT) D = 30' 09' 20.4" L = 266.10' T = 160.12' R = 190.00' SE = EXIST	PI Sta 21+80.35 $\Delta = 77' 4' 08.3''$ (LT) D = 19' 45' 25.8" L = 393.20' T = 233.52' R = 290.00' SE = EXIST
--	---	--

-DRV-

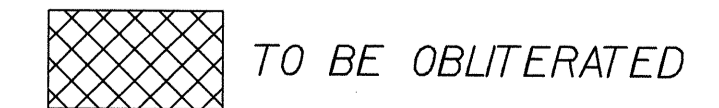
PI Sta 10+18.93 $\Delta = 56' 48' 37.5''$ (RT) D = 163' 42' 08" L = 347.0' T = 18.93' R = 35.00' SE = NC	PI Sta 10+58.77 $\Delta = 86' 46' 54.3''$ (LT) D = 225' 04' 04.7" L = 38.56' T = 24.07' R = 25.46' SE = NC
--	--



NOTES: A DESIGN EXCEPTION WILL BE REQUIRED FOR CREST VERTICAL CURVE K (2), SAG VERTICAL CURVE K (16) AND VERTICAL STOPPING SIGHT DISTANCE (110'). THE ENGINEER ON SITE WILL BE REQUIRED TO TRANSITION SUPER FROM EXISTING -Y- EOP RT TO RC ON THE BRIDGE.

END TIP PROJECT B-3805

-L- STA 13+50.00



TO DEAD END

SEE SHEET 5 FOR -L- & -DRV- GRADES
SEE SHEET S-1 TO S-26 FOR STRUCTURE PLANS