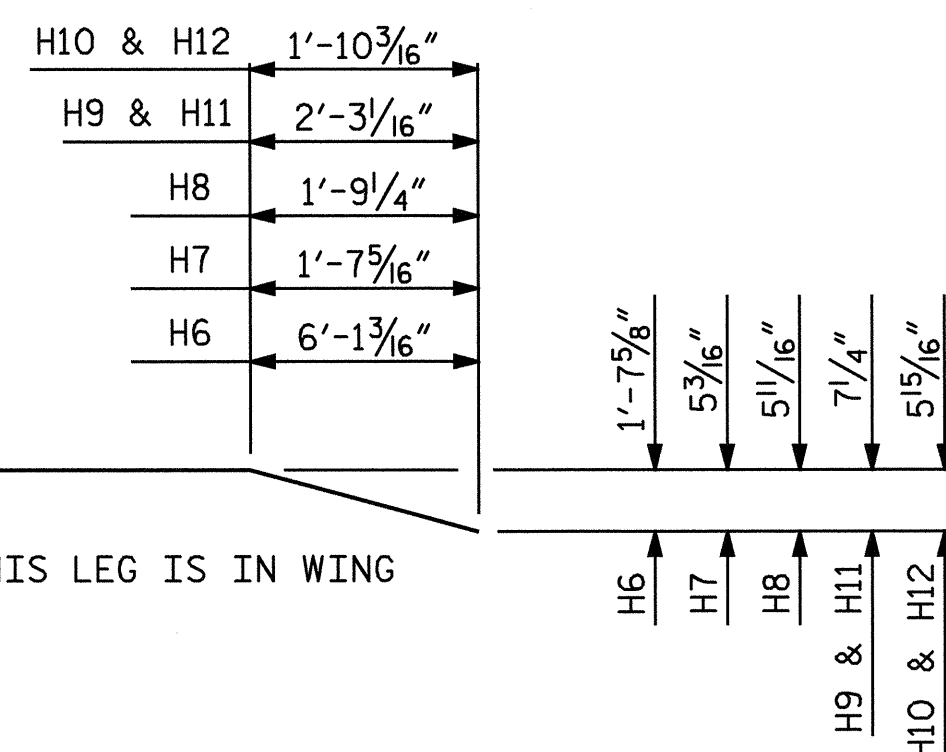
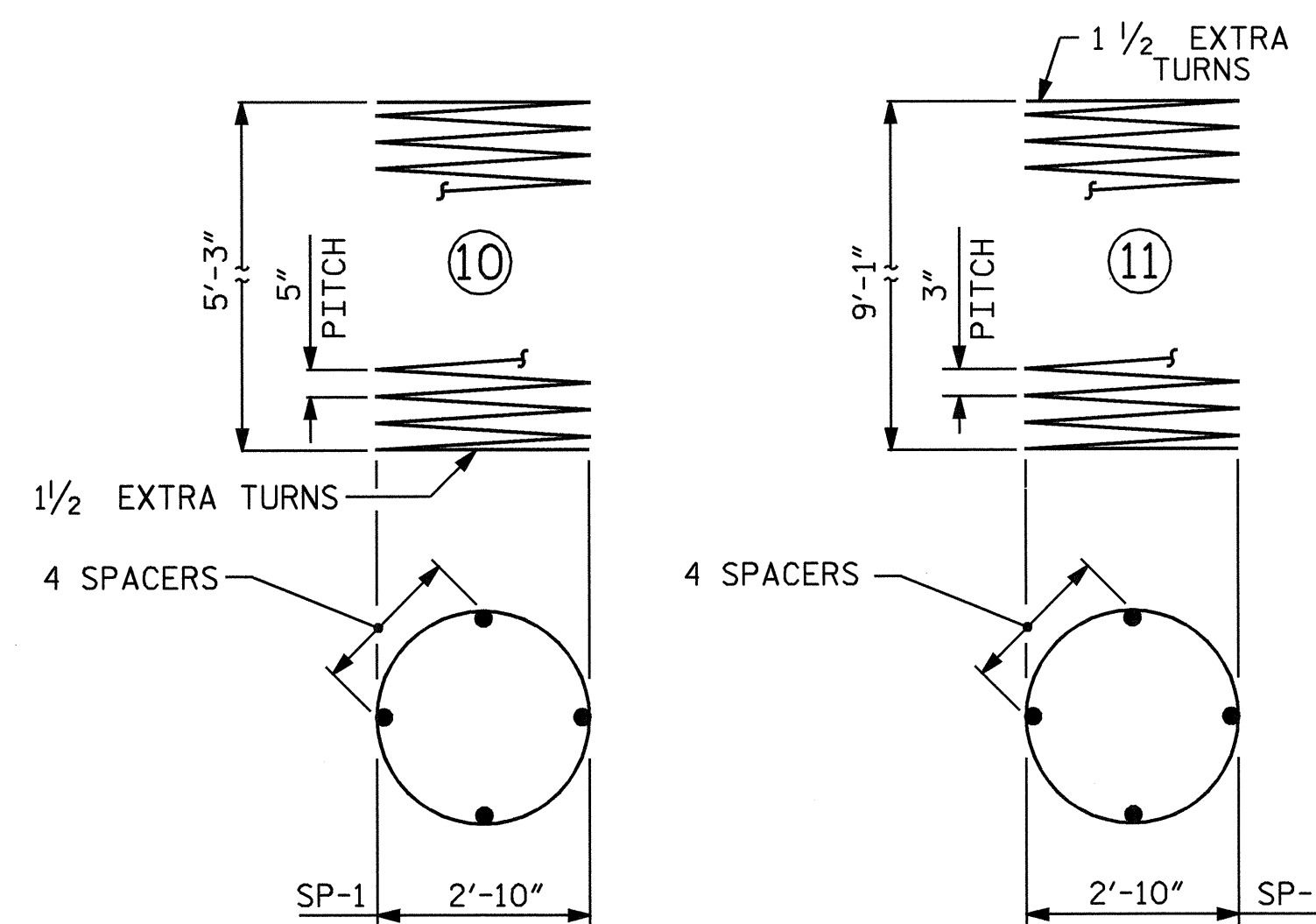
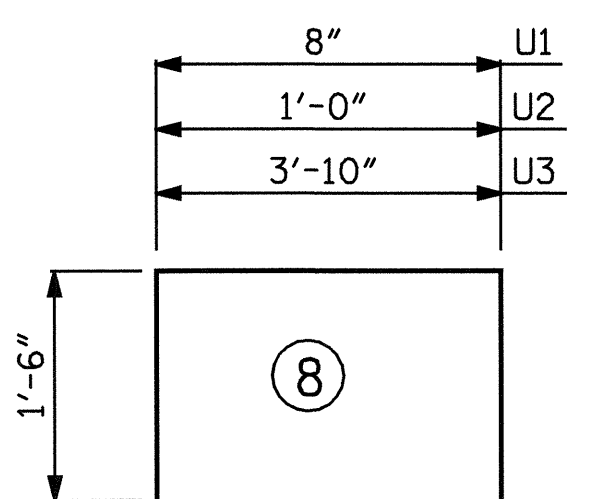
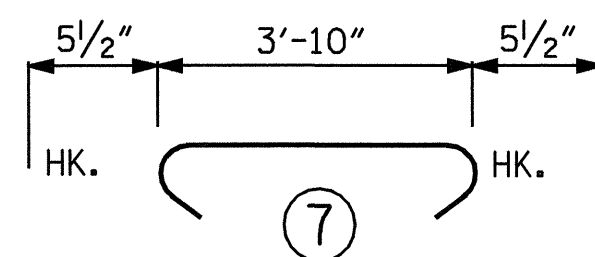
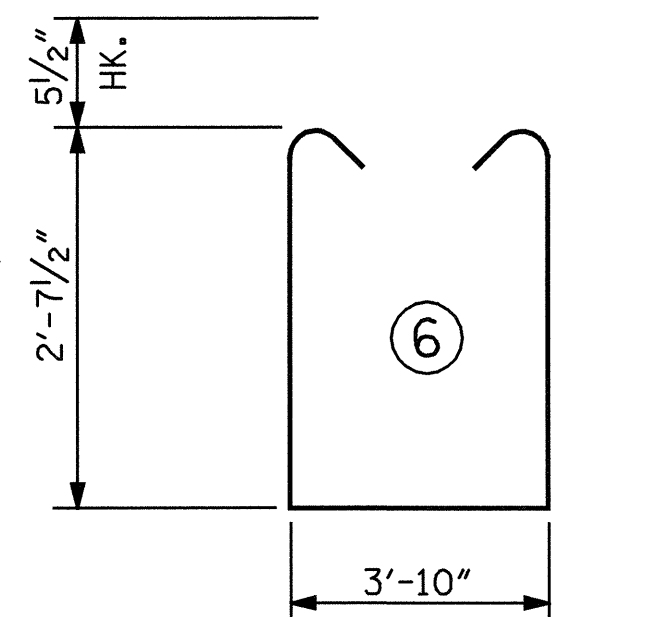
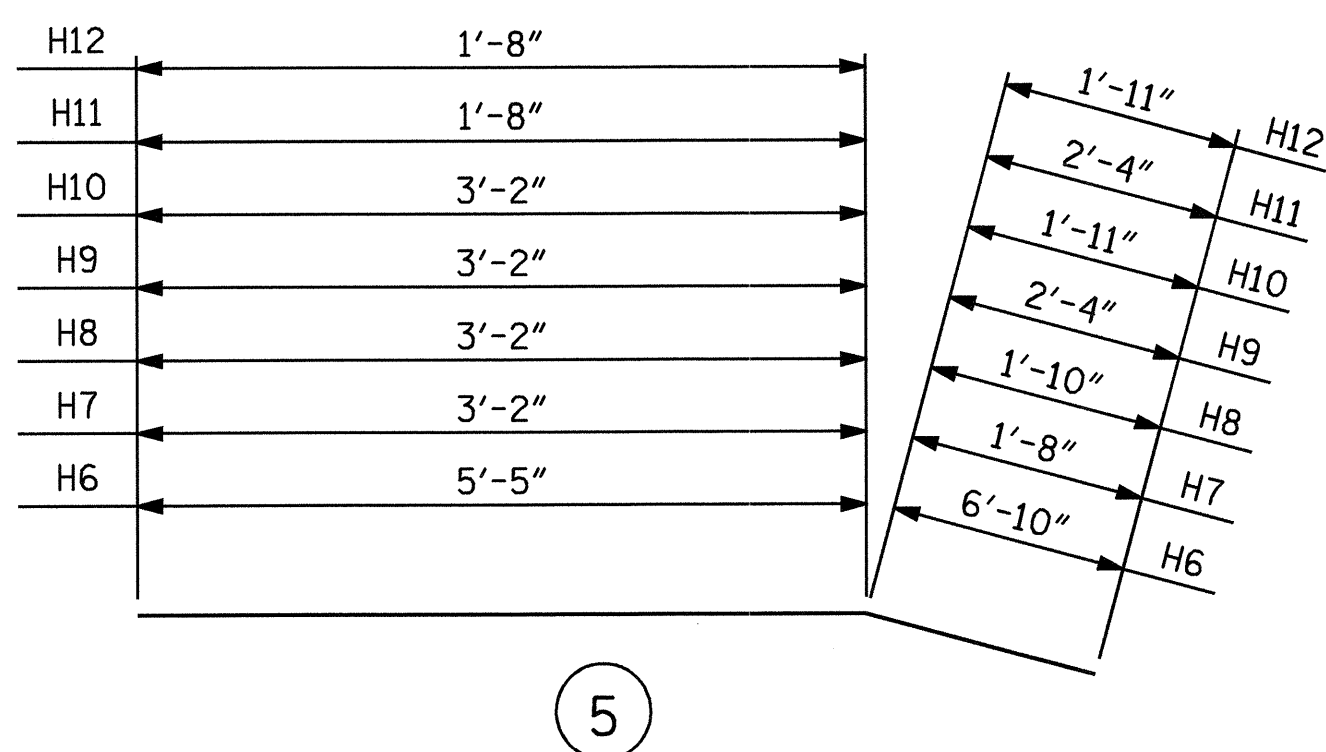
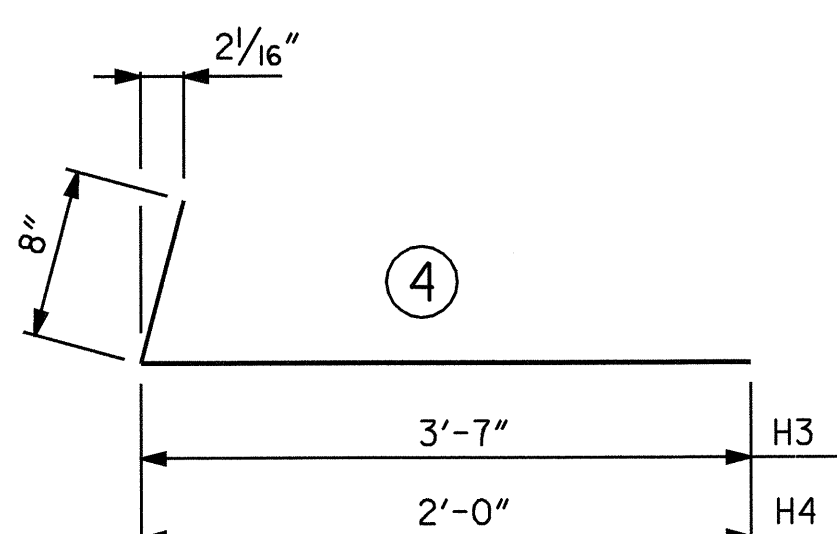
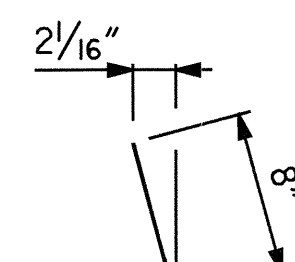
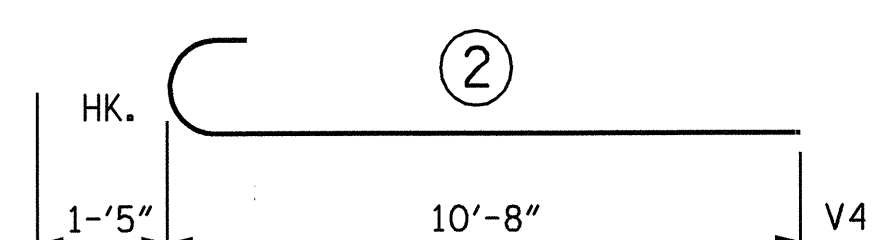
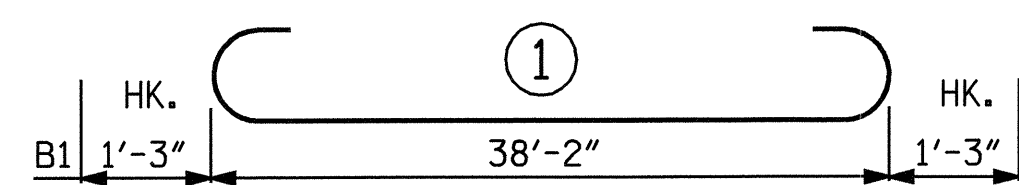


BAR TYPES

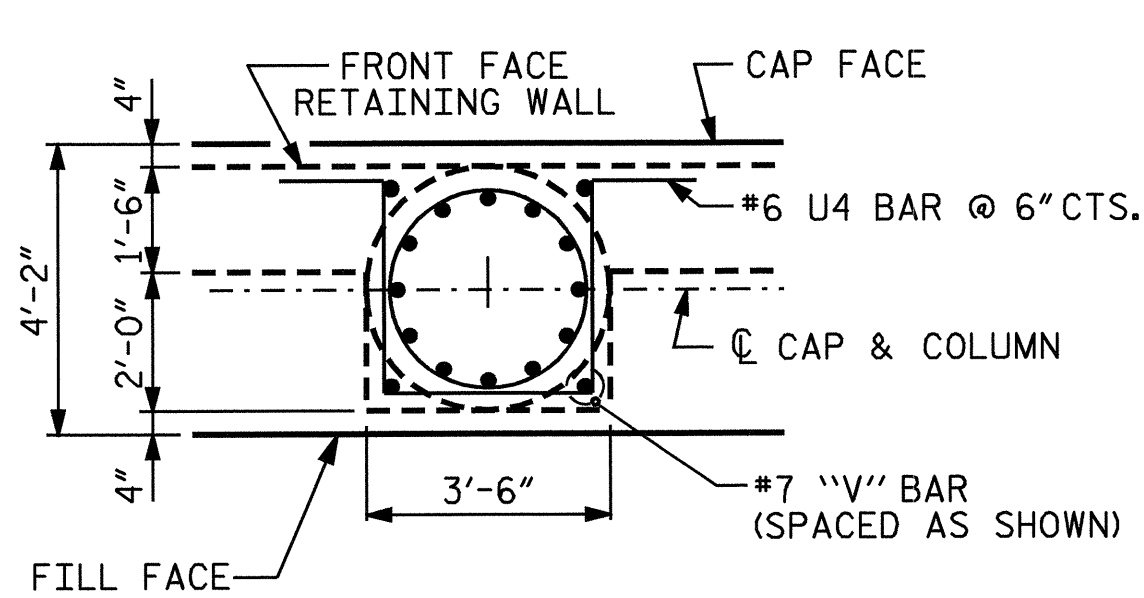


BILL OF MATERIAL

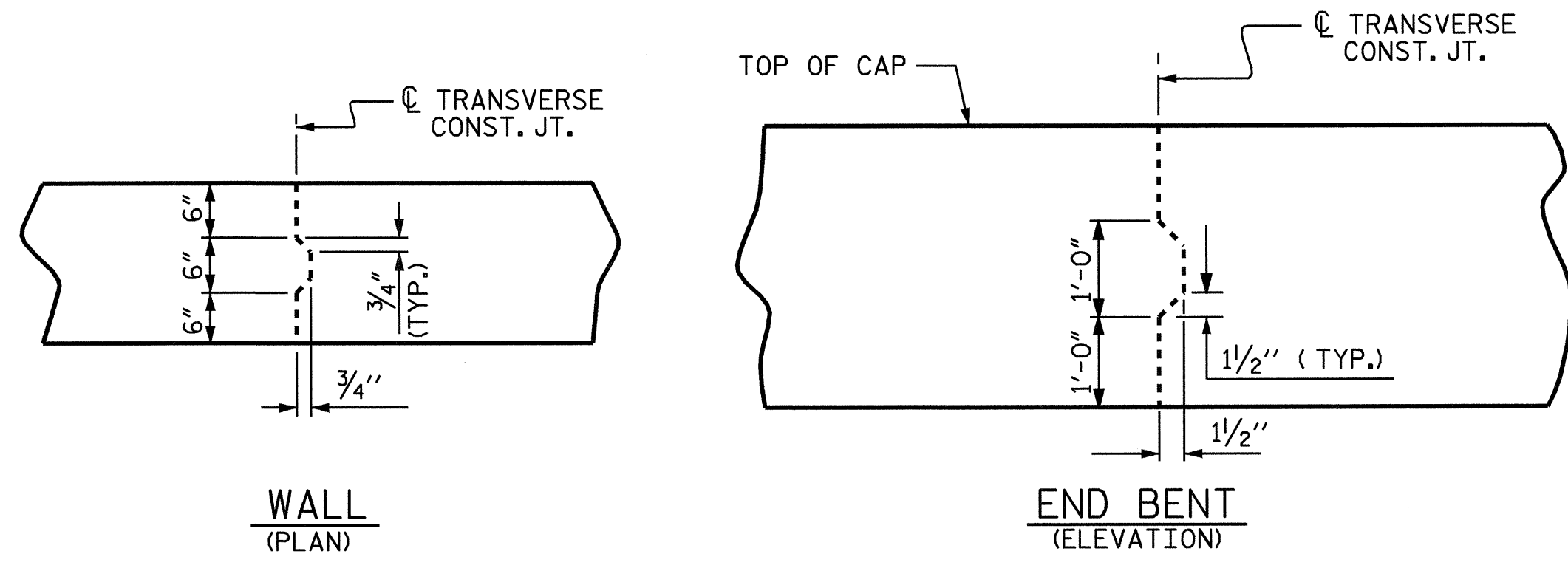
END BENT 1					
BAR	NO.	SIZE	TYPE	LENGTH	WEIGHT
B1	12	#9	1	40'-8"	1659
B2	4	#5	STR	38'-4"	160
B3	12	#4	STR	9'-8"	77
D1	25	#6	STR	2'-0"	75
E1	16	#4	STR	3'-0"	32
H1	12	#4	3	4'-3"	34
H2	8	#4	3	2'-8"	14
H3	12	#4	4	4'-3"	34
H4	8	#4	4	2'-8"	14
H5	20	#7	STR	38'-8"	1581
H6	40	#7	5	12'-3"	1002
H7	7	#5	5	4'-10"	35
H8	7	#5	5	5'-0"	37
H9	7	#5	5	5'-6"	40
H10	7	#5	5	5'-1"	37
H11	1	#5	5	4'-0"	4
H12	1	#5	5	3'-7"	4
H13	40	#7	STR	8'-10"	722
H14	20	#5	STR	8'-10"	184
H15	2	#5	STR	5'-10"	12
H16	2	#5	STR	6'-7"	14
H17	4	#5	STR	1'-11"	8
H18	4	#5	STR	9'-5"	39
K1	16	#4	STR	20'-5"	218
K2	8	#4	STR	3'-2"	17
M1	60	#10	STR	15'-0"	3873
S1	28	#5	6	10'-0"	292
S2	28	#5	7	4'-9"	139
U1	32	#4	8	3'-8"	78
U2	27	#4	8	4'-0"	72
U3	12	#4	8	6'-10"	55
U4	102	#6	9	12'-2"	1864
V1	64	#5	STR	5'-6"	367
V2	14	#4	STR	7'-3"	68
V3	14	#4	STR	7'-9"	72
V4	60	#10	2	12'-1"	3120
V5	54	#5	STR	8'-6"	479
V6	44	#5	STR	12'-5"	570
V7	8	#7	STR	3'-10"	63
V8	8	#7	STR	4'-8"	76
V9	8	#7	STR	5'-5"	89
V10	8	#7	STR	6'-2"	101
V11	4	#7	STR	6'-11"	57
V12	8	#7	STR	7'-3"	119
V13	8	#7	STR	11'-5"	187
V14	12	#7	STR	8'-6"	208
REINFORCING STEEL					= 18002

END BENT 1					
SP-1	5	*	10	123'-5"	644
SP-2	5	**	11	332'-0"	1109
SPIRAL COLUMN REINFORCING STEEL LBS. 1753					
* THE SP-1 SPIRAL REINFORCING STEEL SHALL BE W31 OR D-31 COLD DRAWN WIRE OR #5 PLAIN OR DEFORMED BAR.					
** THE SP-2 SPIRAL REINFORCING STEEL SHALL BE W20 OR D-20 COLD DRAWN WIRE OR #4 PLAIN OR DEFORMED BAR.					
CLASS A CONCRETE BREAKDOWN					
POUR 2 RETAINING WALL AND COLUMNS					40.5 C.Y.
POUR 3 CAP					19.2 C.Y.
POUR 4 BACKWALL, UPPER PORTION OF WINGS, UPPER RETAINING WALL, AND UPPER PORTION OF COLUMNS					14.4 C.Y.
TOTAL CLASS A CONCRETE					74.1 C.Y.
3'-6" Ø DRILLED PIER					
DRILLED PIER CONCRETE BREAKDOWN					
POUR 1 DRILLED PIERS					10.2 C.Y.
3'-6" DIA. DRILLED PIER NOT IN SOIL:					28.75 LIN. FT.
SID INSPECTION					2 EACH
CROSSHOLE SONIC LOGGING:					1 EACH
CSL TUBES :					165.0 FT.

ALL BAR DIMENSIONS ARE OUT TO OUT.



DETAIL B



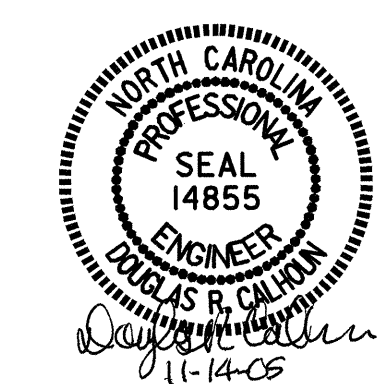
TRANSVERSE CONSTRUCTION JOINT DETAIL

NOTE : REINFORCING STEEL IN CAP NOT SHOWN. LONGITUDINAL REINFORCING STEEL SHALL BE CONTINUOUS THRU JOINT.

PROJECT NO. B-3805
ASHE COUNTY
STATION: 10+63.50 -L-

SHEET 5 OF 5

STATE OF NORTH CAROLINA DEPARTMENT OF TRANSPORTATION RALEIGH					
SUBSTRUCTURE END BENT 1					
REVISIONS					
NO.	BY:	DATE:	NO.	BY:	DATE:
1			3		
2			4		



DRAWN BY: J.B. WILSON DATE: 8/24/05
CHECKED BY: K.P. SEDAI DATE: 9/20/05

SHEET NO. S-19
TOTAL SHEETS 26