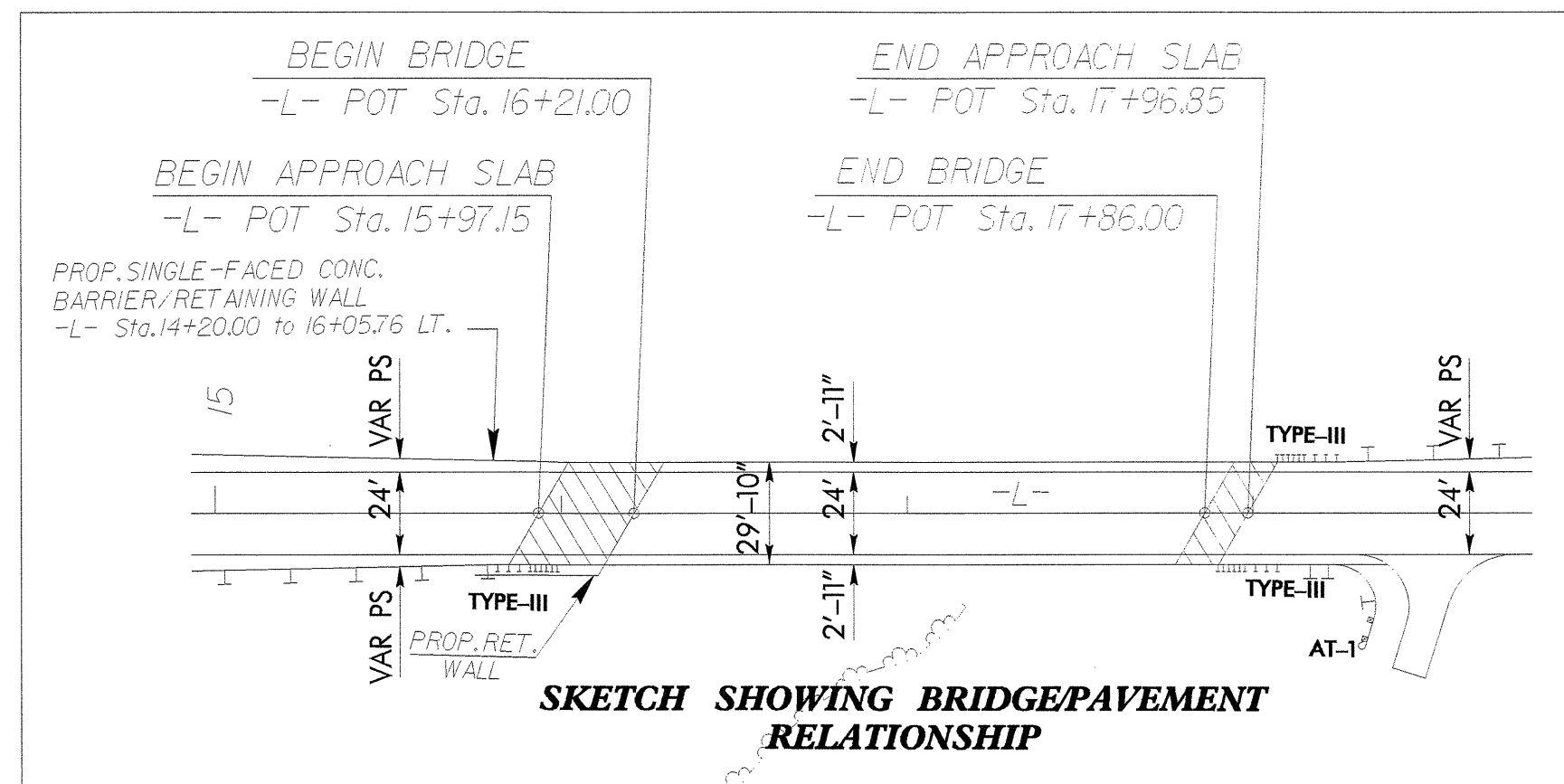
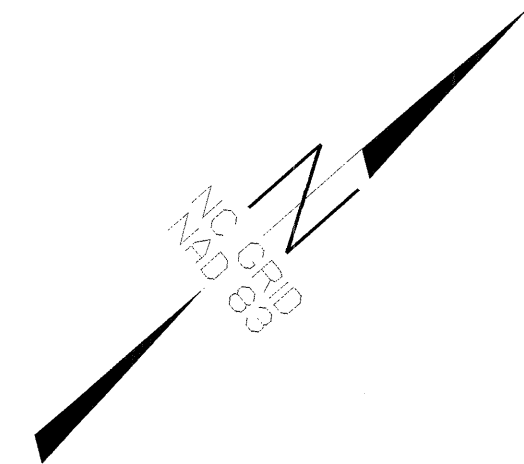


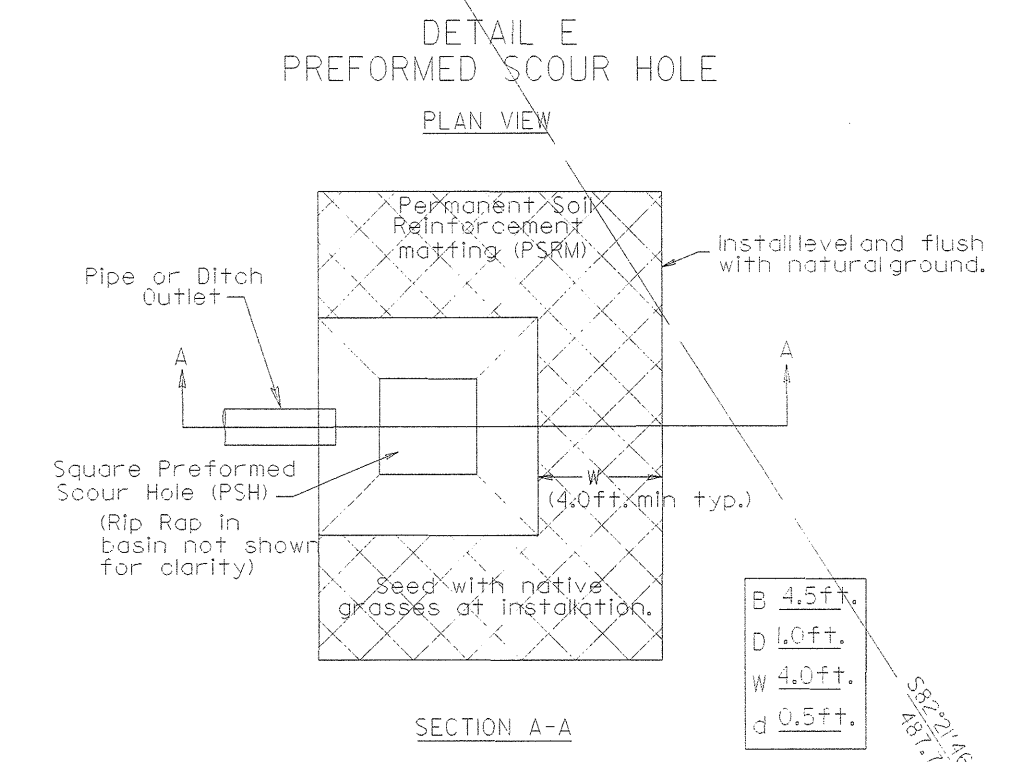
UTILITIES BY OTHERS

NOTE:
ALL PROPOSED UTILITY WORK
SHOWN ON THIS SHEET WILL
BE DONE BY OTHERS

DATUM DESCRIPTION
THE LOCALIZED COORDINATE SYSTEM DEVELOPED FOR THIS PROJECT IS BASED ON THE STATE PLANE COORDINATES ESTABLISHED BY NCDOT FOR MONUMENT "GPS B4007-1"
WITH NAD 83 STATE PLANE GRID COORDINATES OF
NORTHING: 1024568.12 (1311) EASTING: 1411489.43 (1041)
THE AVERAGE COMBINED GRID FACTOR USED ON THIS PROJECT (GROUND TO GRID) IS: 1.00001810
THE N.C. LAMBERT GRID BEARING AND LOCALIZED HORIZONTAL GROUND DISTANCE FROM "GPS B4007-1" TO -L- STATION 10+00.00 IS
S 14° 01' 36.98" W Distance 361.21 ft.
ALL LINEAR DIMENSIONS ARE LOCALIZED HORIZONTAL DISTANCES
VERTICAL DATUM USED IS NAVD 88

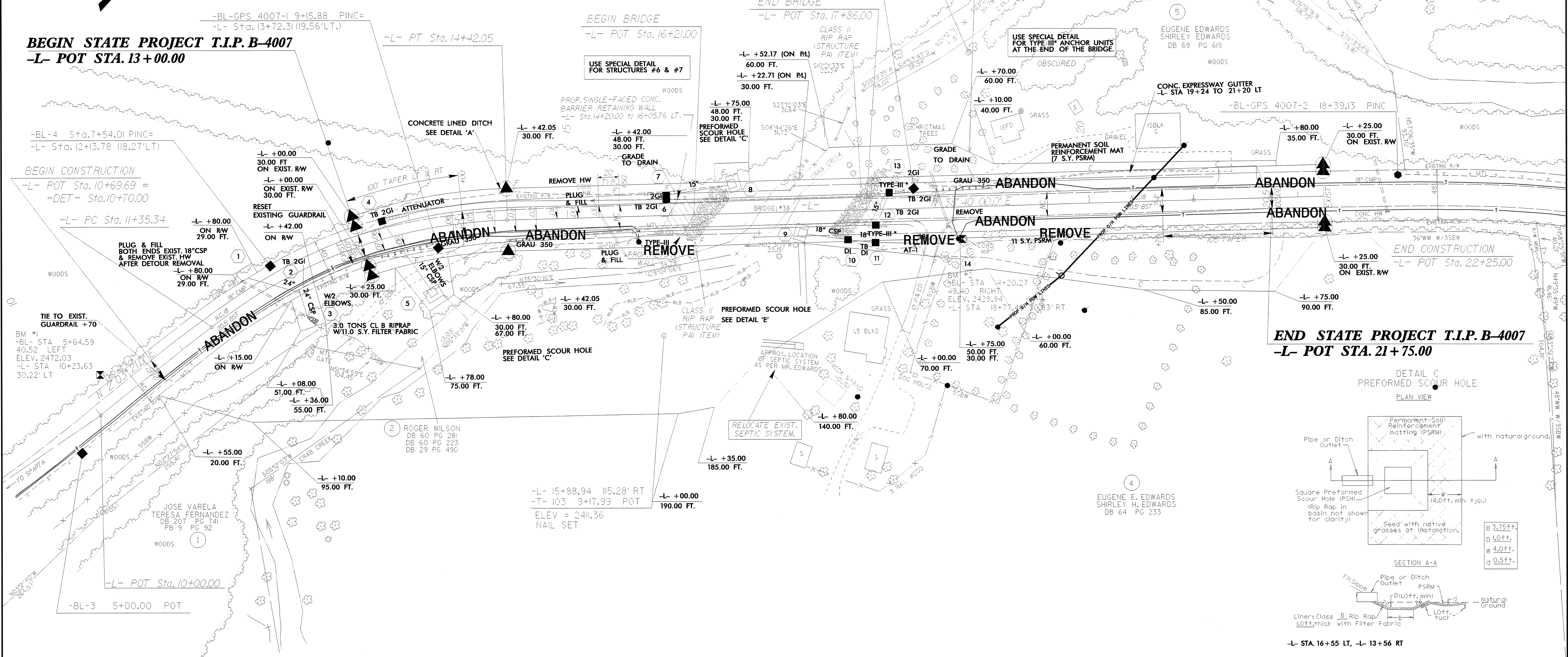


TEMPORARY CONSTRUCTION EASEMENT FOR TEMPORARY ACCESS ROAD. LOCATION TO BE DETERMINED BY RESIDENT ENGINEER.

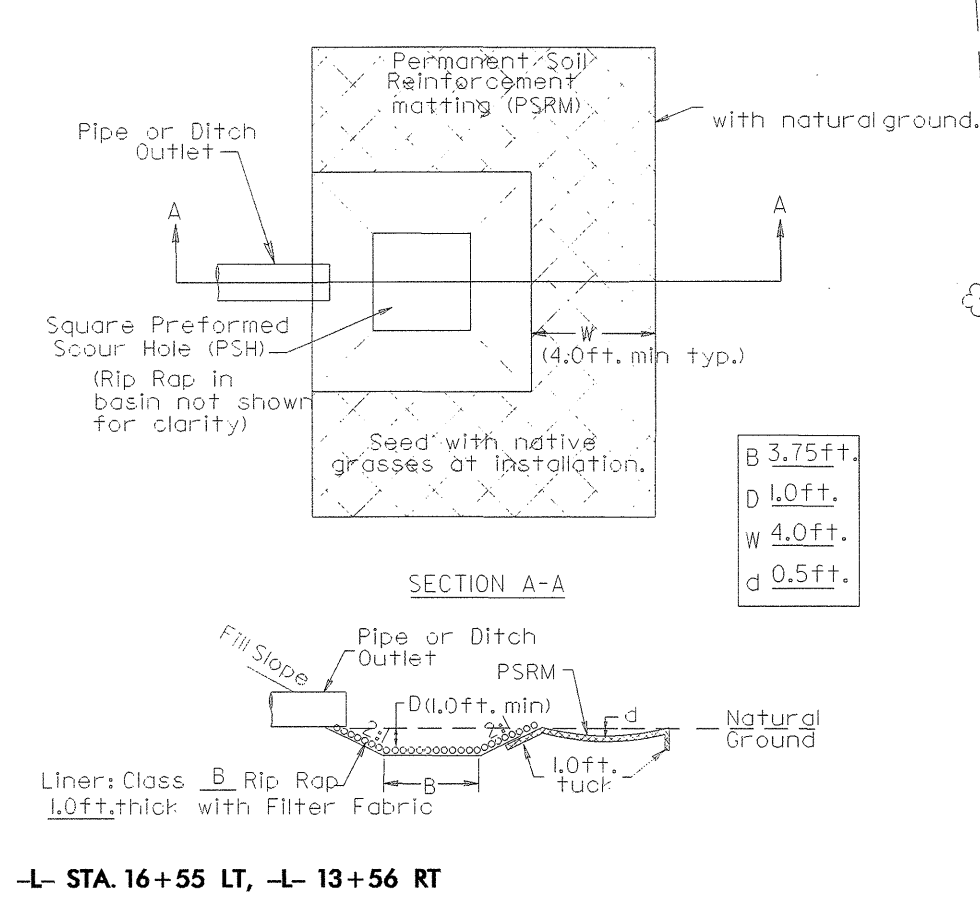


BEGIN STATE PROJECT T.I.P. B-4007
-L- POT STA. 13+00.00

END STATE PROJECT T.I.P. B-4007
-L- POT STA. 21+75.00



DETAIL C PREFORMED SCOUR HOLE PLAN VIEW



-L- STA. 16+55 LT, -L- 13+56 RT

SEE SHEET 2B FOR TEMPORARY DETOUR

SEE SHEETS S- THRU S- FOR STRUCTURE PLANS

SEE SHEET 5 FOR -L- PROFILE

-L-
PI Sta. 12+94.14
Δ = 36° 36' 39.0" (RT)
D = 11° 56' 11.8"
L = 306.71'
T = 158.80'
R = 480.00'
e = 0.06
R0 = See Plans

5/14/99 SYSTEMS *****