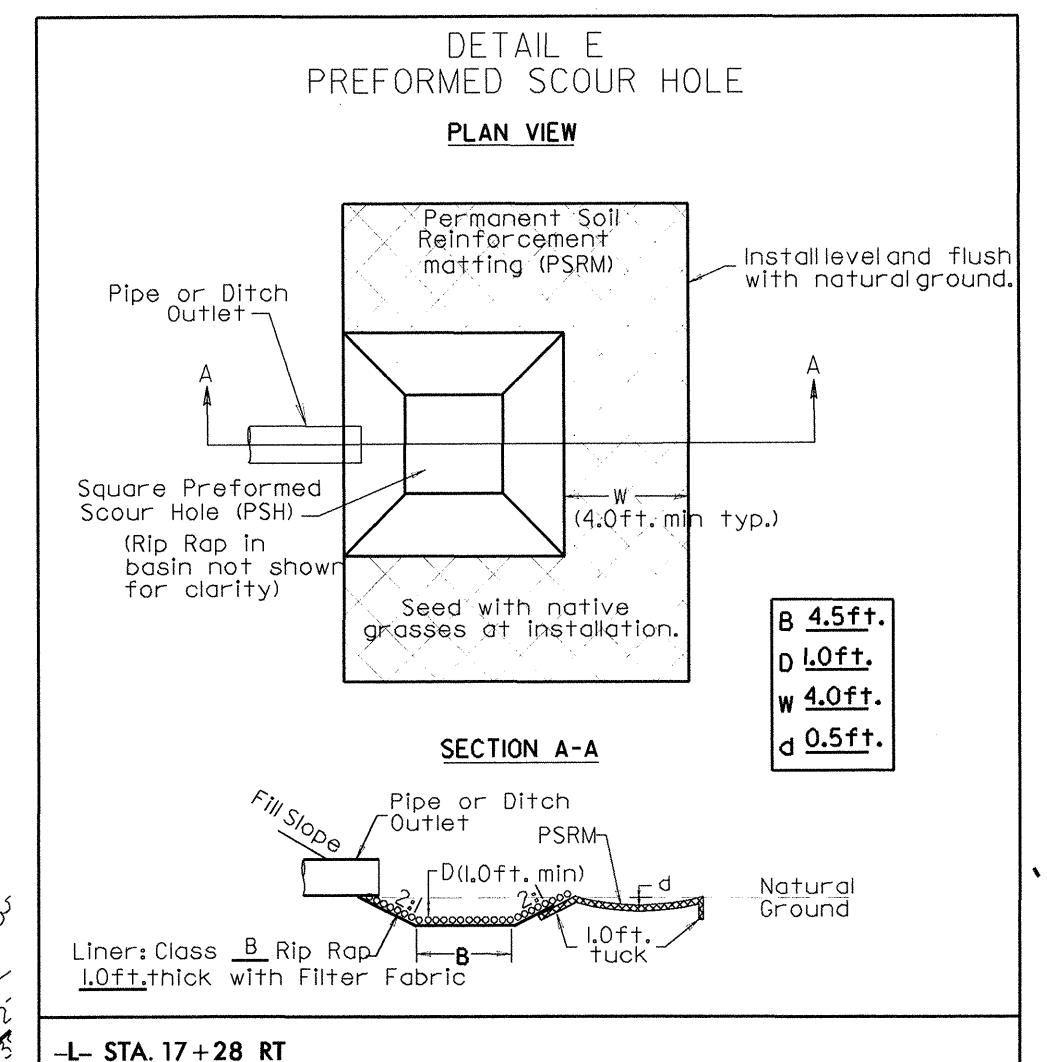


TEMPORARY CONSTRUCTION EASEMENT REQUESTED BY DIVISION FOR TEMPORARY ACCESS ROAD. FOR TEMPORARY ACCESS ROAD. TO BE DETERMINED BY RESIDENT ENGINEER.

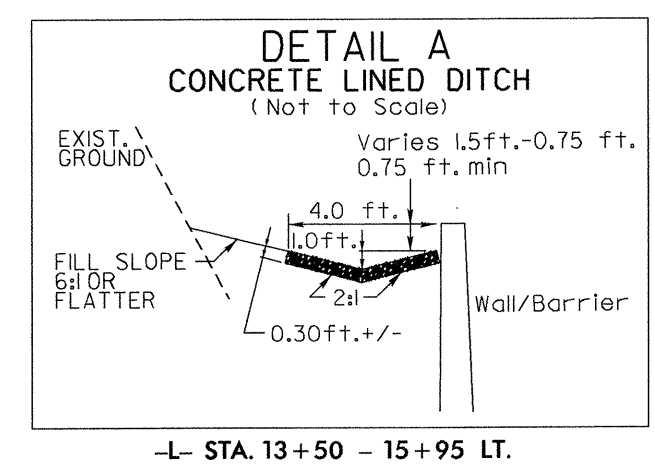
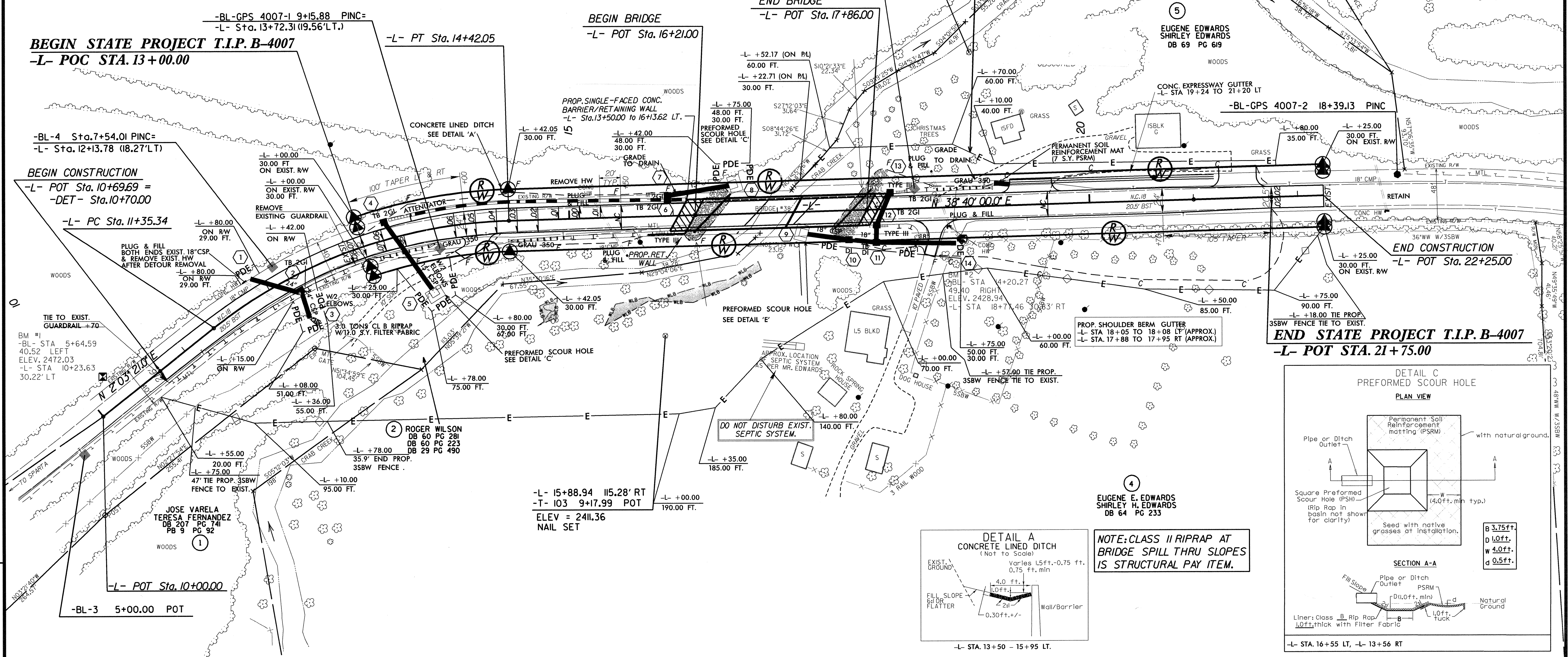
PLACE 6" DECK DRAINS ON 12' CENTERS:  
 STA -L- 17+78 TO 17+90 LT  
 STA -L- 17+58 TO 17+70 RT



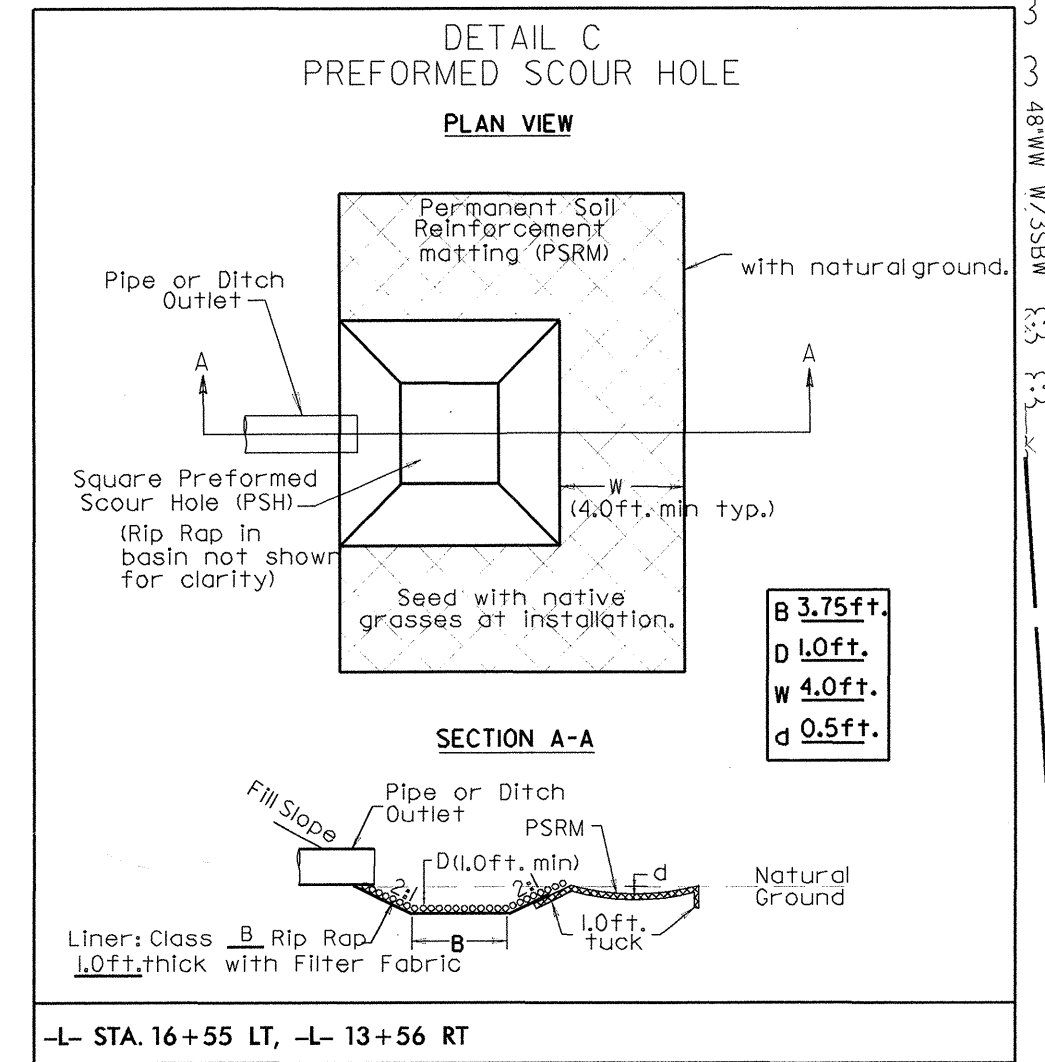
BILLY HAWKS  
 ELAINE HAWKS  
 DB 198 PG 600

EUGENE EDWARDS  
 SHIRLEY EDWARDS  
 DB 69 PG 619

EUGENE E. EDWARDS  
 SHIRLEY H. EDWARDS  
 DB 64 PG 233



NOTE: CLASS II RIPRAP AT BRIDGE SPILL THRU SLOPES IS STRUCTURAL PAY ITEM.



SEE SHEET 2B FOR TEMPORARY DETOUR

SEE SHEETS S-1 THRU S-23 FOR STRUCTURE PLANS

SEE SHEET 5 FOR -L- PROFILE

-L-  
 PI Sta 12+94.14  
 Δ = 36° 36' 39.0" (RT)  
 D = 1156' 11.8"  
 L = 306.71'  
 T = 158.80'  
 R = 480.00'  
 e = 0.06  
 RO = See Plans

**PLANS PREPARED BY :**  
  
**RUMMEL KLEPPER & KAHL, LLP**  
*consulting engineers*  
 900 RIDGEFIELD DRIVE SUITE 350  
 RALEIGH, NORTH CAROLINA 27609-3960  
 (919) 878-9560  
 FOR  
**STATE OF NORTH CAROLINA**  
 DIVISION OF HIGHWAYS

REVISIONS

01/25/2006 P:\Projects\B-4007\_rdu\psh\_04.dgn  
 8/17/06