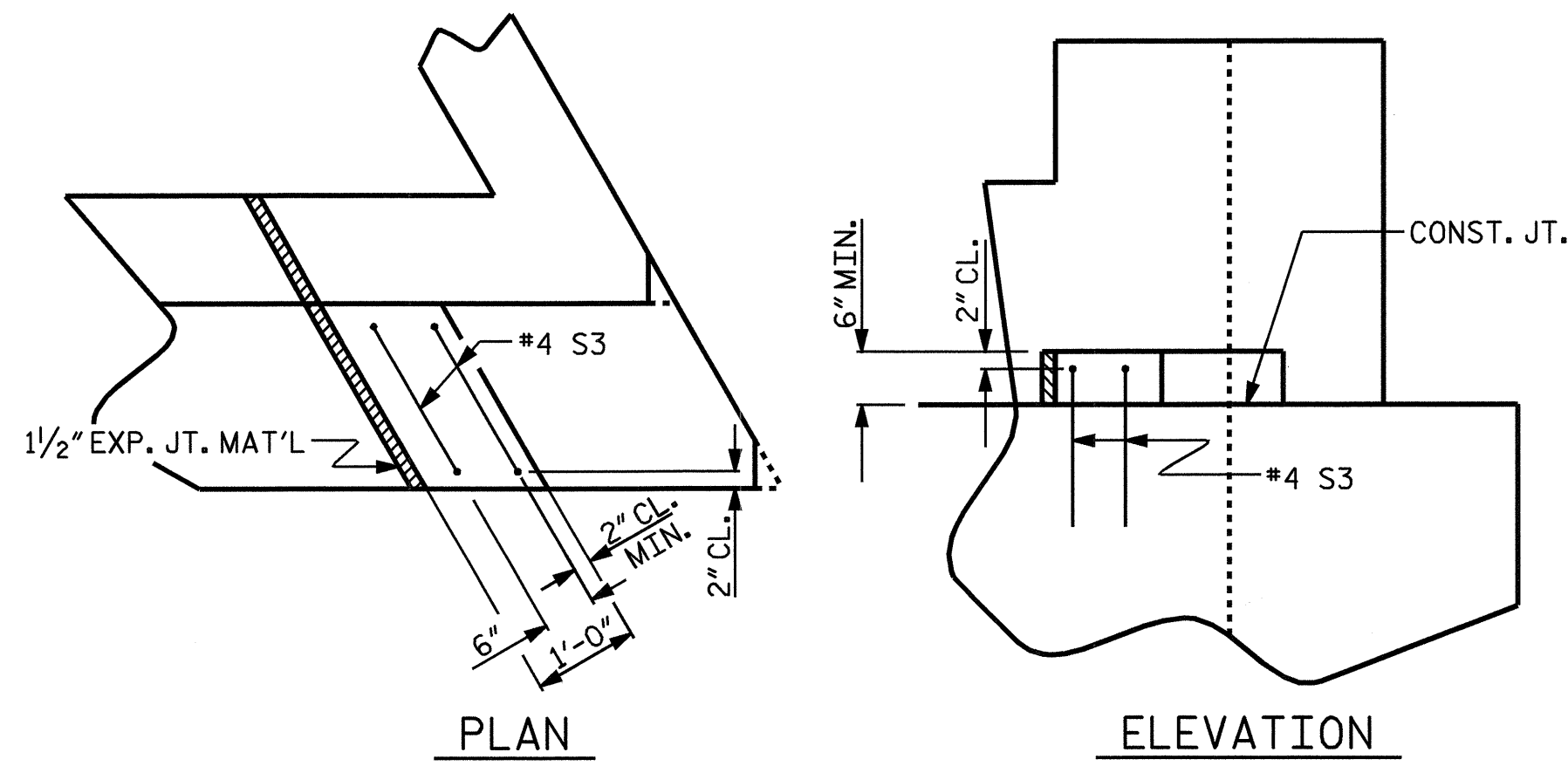


BAGGED STONE AND PIPE SHALL BE PLACED IMMEDIATELY AFTER COMPLETION OF END BENT EXCAVATION. PIPE MAY BE EITHER CONCRETE, CORRUGATED STEEL, CORRUGATED ALUMINUM ALLOY, OR CORRUGATED PLASTIC. PERFORATED PIPE WILL NOT BE ALLOWED.

BAGGED STONE SHALL REMAIN IN PLACE UNTIL THE ENGINEER DIRECTS THAT IT BE REMOVED. THE CONTRACTOR SHALL REMOVE AND DISPOSE OF SILT ACCUMULATIONS AT BAGGED STONE WHEN SO DIRECTED BY THE ENGINEER. BAGS SHALL BE REMOVED AND REPLACED WHENEVER THE ENGINEER DETERMINES THAT THEY HAVE DETERIORATED AND LOST THEIR EFFECTIVENESS.

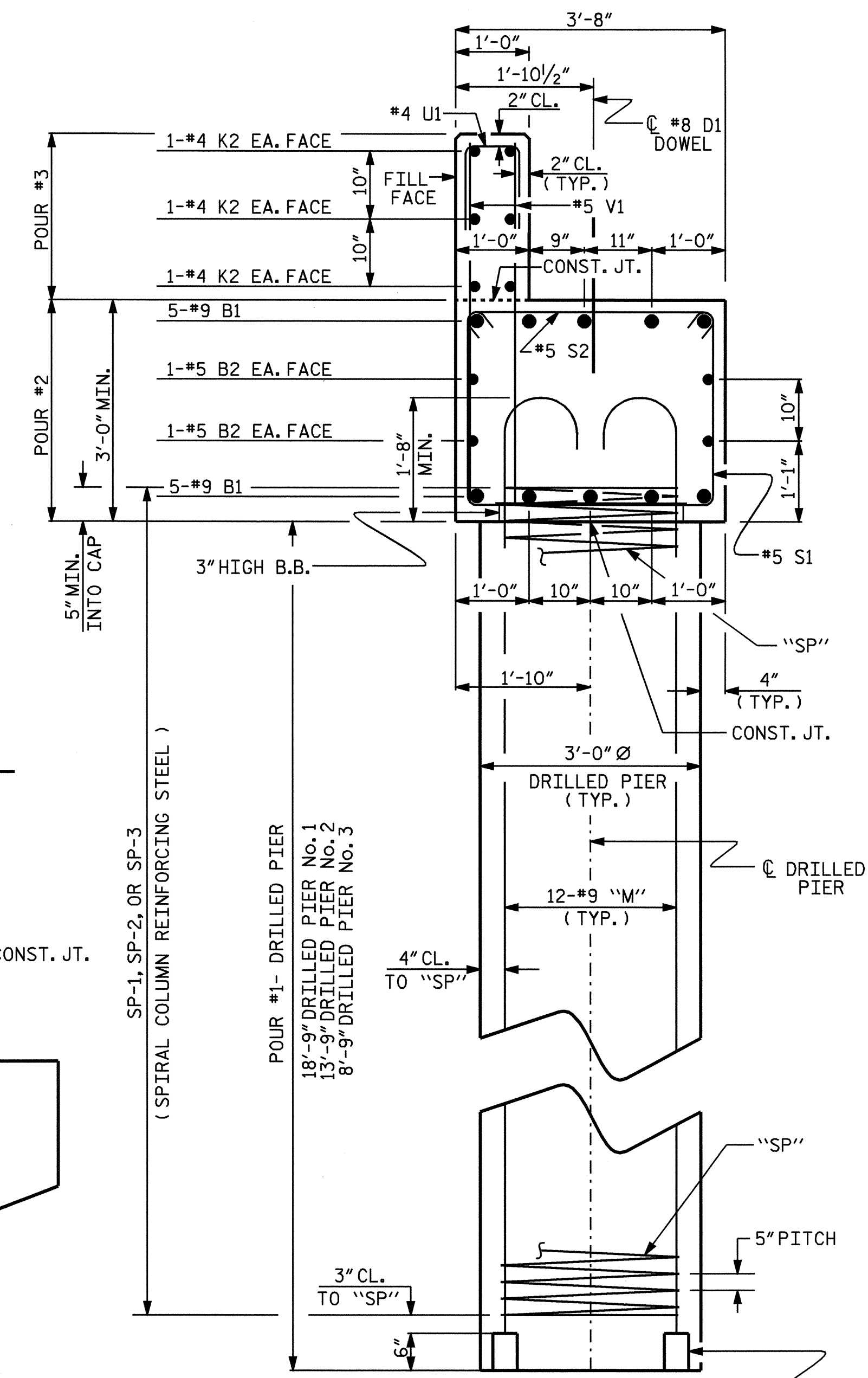
NO SEPARATE PAYMENT WILL BE MADE FOR THIS WORK AND THE ENTIRE COST OF THIS WORK SHALL BE INCLUDED IN THE UNIT CONTRACT PRICE BID FOR THE SEVERAL PAY ITEMS.

TEMPORARY DRAINAGE AT END BENT No. 2



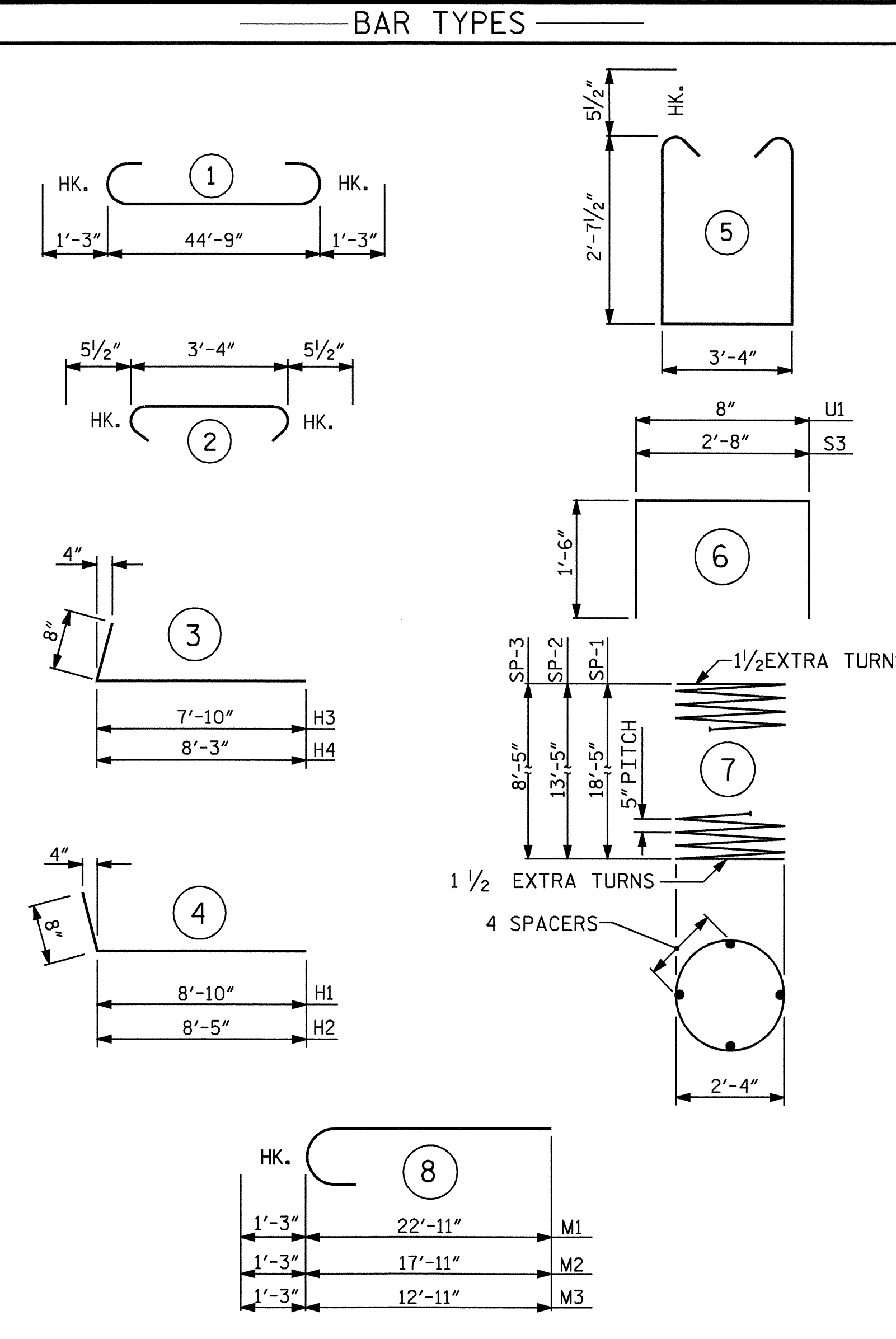
LATERAL GUIDE DETAIL

(RIGHT LATERAL GUIDE SHOWN, LEFT LATERAL GUIDE SIMILAR)

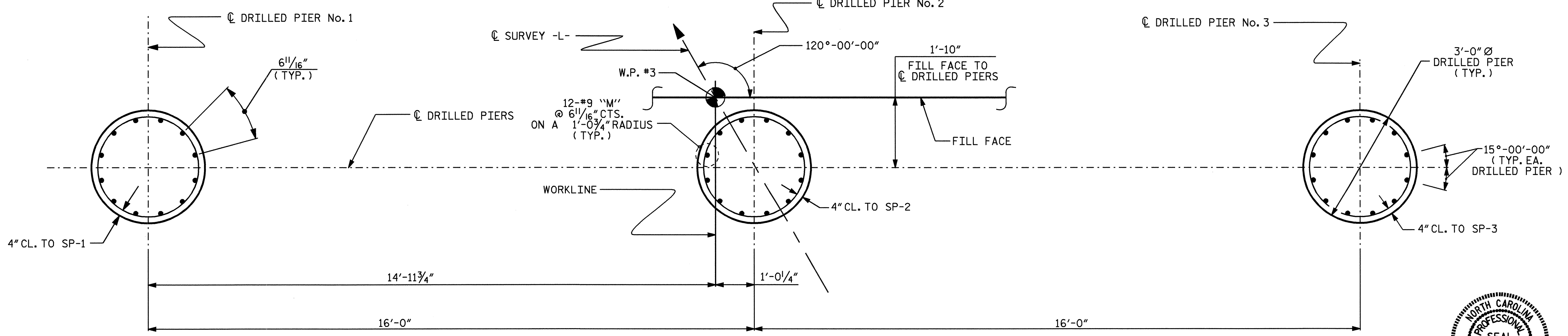


SECTION A-A

PLASTIC BOLSTER (TYP. EA. "M" BAR)



ALL BAR DIMENSIONS ARE OUT TO OUT.



PLAN OF DRILLED PIERS

BILL OF MATERIAL					
END BENT No. 2					
BAR	NO.	SIZE	TYPE	LENGTH	WEIGHT
B1	10	9		47'-3"	1607
B2	4	5	STR	44'-10"	187
D1	22	8	STR	2'-3"	132
H1	8	4	4	9'-6"	51
H2	8	4	4	9'-1"	49
H3	8	4	3	8'-6"	45
H4	8	4	3	8'-11"	48
K1	8	4	STR	2'-11"	16
K2	12	4	STR	23'-8"	190
M1	12	9	8	24'-2"	986
M2	12	9	8	19'-2"	782
M3	12	9	8	14'-2"	578
S1	44	5	5	9'-6"	436
S2	44	5	2	4'-3"	195
S3	4	4	6	5'-8"	15
U1	39	4	6	3'-8"	96
V1	78	5	STR	4'-7"	373
V2	52	4	STR	5'-11"	206
REINFORCING STEEL					5992 LBS.
SP-1	1	*	7	344'-7"	359
SP-2	1	*	7	258'-6"	270
SP-3	1	*	7	172'-4"	180
SPIRAL COLUMN REINFORCING STEEL					809 LBS.
* THE "SP" SPIRAL REINFORCING STEEL SHALL BE W-31 OR D-31 COLD DRAWN WIRE OR #5 PLAIN OR DEFORMED BAR.					
CLASS A CONCRETE BREAKDOWN					
POUR #2	CAP & BOTTOM OF WINGS			20.4 C.Y.	
POUR #3	TOP OF WINGS & BACKWALL			5.6 C.Y.	
POUR #4	LATERAL GUIDE			0.1 C.Y.	
TOTAL CLASS A CONCRETE					26.1 C.Y.
DRILLED PIERS:					
DRILLED PIER CONC. (C.Y.)					
POUR #1	DRILLED PIER			10.8 C.Y.	
3'-0" Ø DRILLED PIER IN SOIL= 26.25 LIN. FT.					
3'-0" Ø DRILLED PIER NOT IN SOIL= 15.0 LIN. FT.					
CSL TUBES 195.0 LIN. FT.					
CROSSHOLE SONIC LOGGING 1 EACH					

PROJECT NO. **B-4007**
ALLEGHANY COUNTY
 STATION: **17+03.50 -L-**

SHEET 3 OF 3

STATE OF NORTH CAROLINA
 DEPARTMENT OF TRANSPORTATION
 RALEIGH

**SUBSTRUCTURE
 END BENT No. 2**

REVISIONS						SHEET NO.
NO.	BY:	DATE:	NO.	BY:	DATE:	S-18
1			3			TOTAL SHEETS 23
2			4			

DRAWN BY : N. PIERCE DATE : 6/05
 CHECKED BY : S.B. WILLIAMS DATE : 8/05

