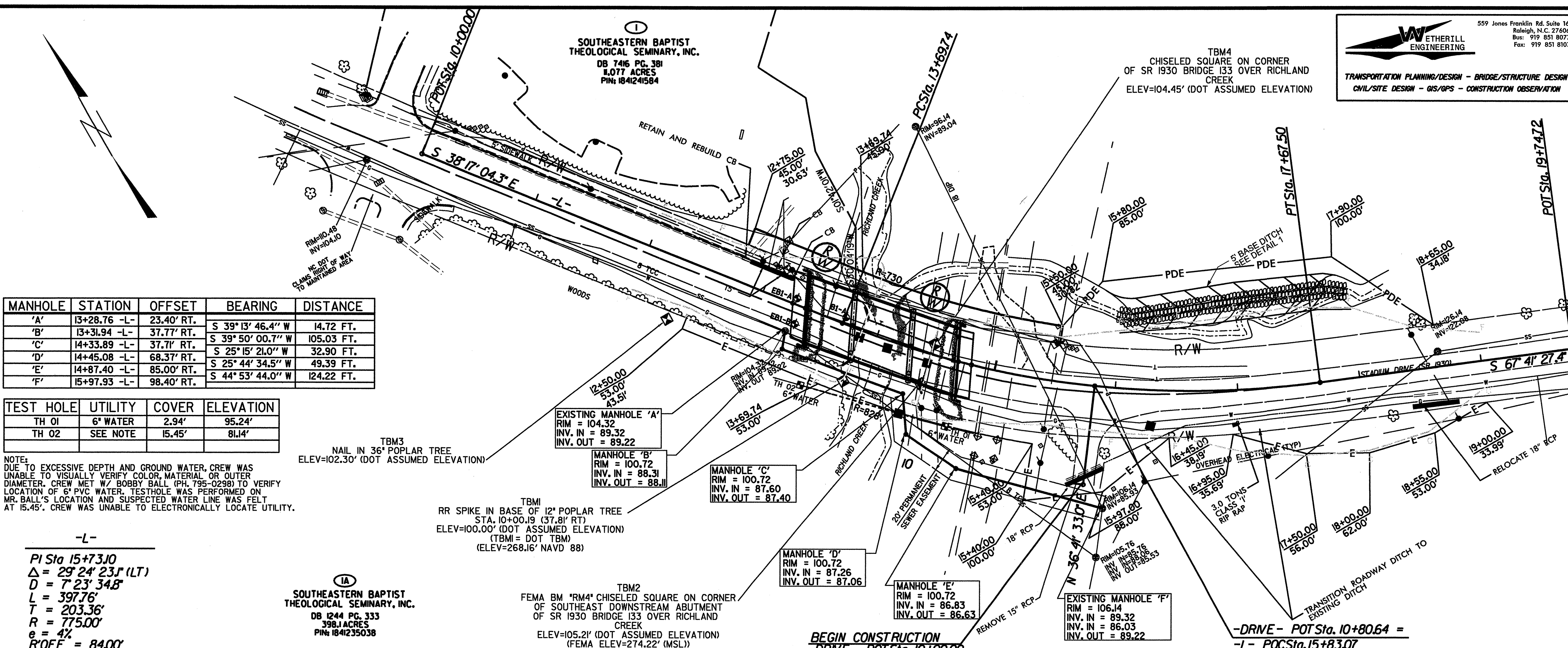


5/28/19

10:33:25 AM
 P:\100\MA050018\Roadway\Proj\133-rtl_PS&PRD.dgn
 USA



-L-
 PI Sta 15+73.0
 $\Delta = 29' 24" 23.1 (LT)$
 $D = 7' 23" 34.8$
 $L = 397.76'$
 $T = 203.36'$
 $R = 775.00'$
 $e = 4'$
 $R'OFF = 84.00'$

(1A)
 SOUTHEASTERN BAPTIST
 THEOLOGICAL SEMINARY, INC.
 DB 1244 PG. 333
 398.1 ACRES
 PIN: 184235038

(1B)
 FEMA BM "RM4" CHISELED SQUARE ON CORNER
 OF SOUTHEAST DOWNSTREAM ABUTMENT
 OF SR 1930 BRIDGE 133 OVER RICHLAND
 CREEK
 ELEV=105.2' (DOT ASSUMED ELEVATION)
 (FEMA ELEV=274.22' (MSL))

BEGIN CONSTRUCTION
 -DRIVE - POT Sta. 10+00.00

-DRIVE - POT Sta. 10+80.64 =
 -L- POCSta. 15+83.07

BRIDGE 133 WAKE COUNTY
 SR 1930
 RICHLAND CREEK

ETHERILL ENGINEERING
 559 Jones Franklin Rd. Suite 164
 Raleigh, N.C. 27606
 Bus: 919 851 8077
 Fax: 919 851 8107

TRANSPORTATION PLANNING/DESIGN - BRIDGE/STRUCTURE DESIGN
 CIVIL/SITE DESIGN - GIS/GPS - CONSTRUCTION OBSERVATION

PROJECT REFERENCE NO. **MA050018**
 SHEET NO. **U-1**

UTILITY
 ROADWAY DESIGN
 ENGINEER

EDWARD G. WETHERILL
 ENGINEER
 10773
 2/14/06

⊕ DENOTES GEOTECHNICAL BORING HOLE LOCATIONS.

