

STORM DRAINAGE DESIGN SUMMARY:

STA. 13+19 CATCH BASIN CB-1
RIM=103.72, H=3.00'; INV. OUT=100.72
FROM CB-1 TO CB-2;
12 LF OF 18" CL III RCP, SLOPE=0.33%
STA. 13+03 CATCH BASIN CB-2
RIM=103.70, H=3.22';
INV. IN=100.68, INV. OUT=100.48
FROM CB-2 TO EX. CATCH BASIN;
20 LF OF 18" CL III RCP, SLOPE @ 1.18%
STA. 12+79 EX. CATCH BASIN
EX. RIM=103.40
NEW RIM=103.70
INV. IN (EX. 36" RCP)=97.90
NEW INV. IN=100.25 (18" RCP)
EX. INV. OUT=90.38

NOTES:
1. LENGTHS OF STORM DRAIN ARE ILLUSTRATED FROM INSIDE FACE OF STRUCTURE TO INSIDE FACE OF STRUCTURE.
2. CATCH BASINS SHALL BE BRICK OR CONCRETE AND SHALL BE CONSTRUCTED IN ACCORDANCE TO NCDOT STD. 840.01 OR 840.02 RESPECTIVELY.

EROSION CONTROL PLAN

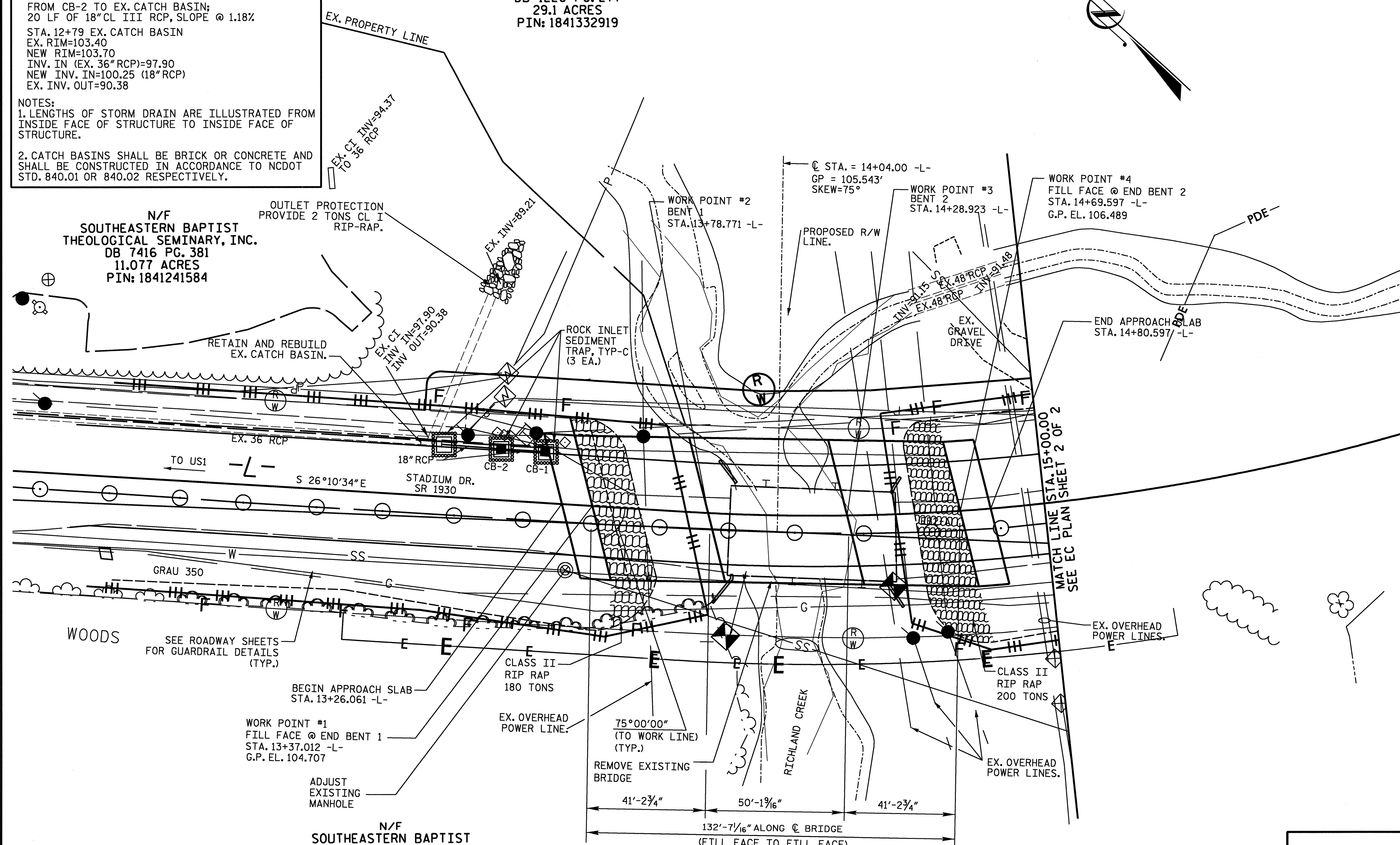
(1 OF 3)

N/F
WAKE COUNTY
BOARD OF EDUCATION
DB 1226 PG. 277
29.1 ACRES
PIN: 1841332919

STD. #

1605.01	Temporary Silt Fence (1250 LB)	
1632.03	Rock Inlet Sediment Trap Type C (3 ea.)	[Symbol]
1633.01	Temporary Rock Silt Check Type A (1 ea.)	[Symbol]
1633.02	Temporary Rock Silt Check Type B (3 ea.)	[Symbol]
876.01	Rip Rap In Channels (415 TN) - CL I	[Symbol]
876.02	Rip Rap At Pipe Outlets (4 TN) - CL I	[Symbol]
N/A	Rip Rap At Ditch Transition (4 TN) - CL I	[Symbol]

NOTE: FOR EROSION CONTROL SEQUENCE, SEE EC PLAN SHEET 2 OF 2.

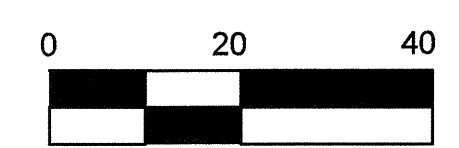


N/F
SOUTHEASTERN BAPTIST
THEOLOGICAL SEMINARY, INC.
DB 7416 PG. 381
11.077 ACRES
PIN: 1841241584

N/F
SOUTHEASTERN BAPTIST
THEOLOGICAL SEMINARY, INC.
DB 7416 PG. 381
11.077 ACRES
PIN: 1841241584

WBS. NO. 37017
WAKE COUNTY
STATION: 14+04.00 -L-
REPLACES BRIDGE NO. 133
SHEET 1 OF 3

PLAN
SCALE: 1"=20'



NOTE: ANY DEVIATION FROM OPTIONS GIVEN WILL REQUIRE PRIOR APPROVAL BY ENGINEER.

ROADSIDE ENVIRONMENTAL UNIT
DEPARTMENT OF TRANSPORTATION
DIVISION OF HIGHWAYS
RALEIGH, N.C.
2002 STANDARD SPECIFICATIONS

Professional Engineer Seal for Andrew H. Hadsell, No. 0299, State of North Carolina. Date: 12/21/05.

ETHERILL ENGINEERING
559 Jones Franklin Rd. Suite 164
Raleigh, N.C. 27606
Bus: 919 851 8077
Fax: 919 851 8107

STATE OF NORTH CAROLINA
DEPARTMENT OF TRANSPORTATION
RALEIGH

BRIDGE #133 ON SR 1930
OVER RICHLAND CREEK

REVISIONS					
NO.	BY	DATE	NO.	BY	DATE
1			1		
2			2		

SHEET NO. EC-1
TOTAL SHEETS

P:\4100M\40500\15\Structures\DWG\erosion 1.dgn
12/21/2005 11:12:35 AM

DRAWN BY: J PENDERGRAFT DATE: 12-05
CHECKED BY: A. HADSELL DATE: 12-11