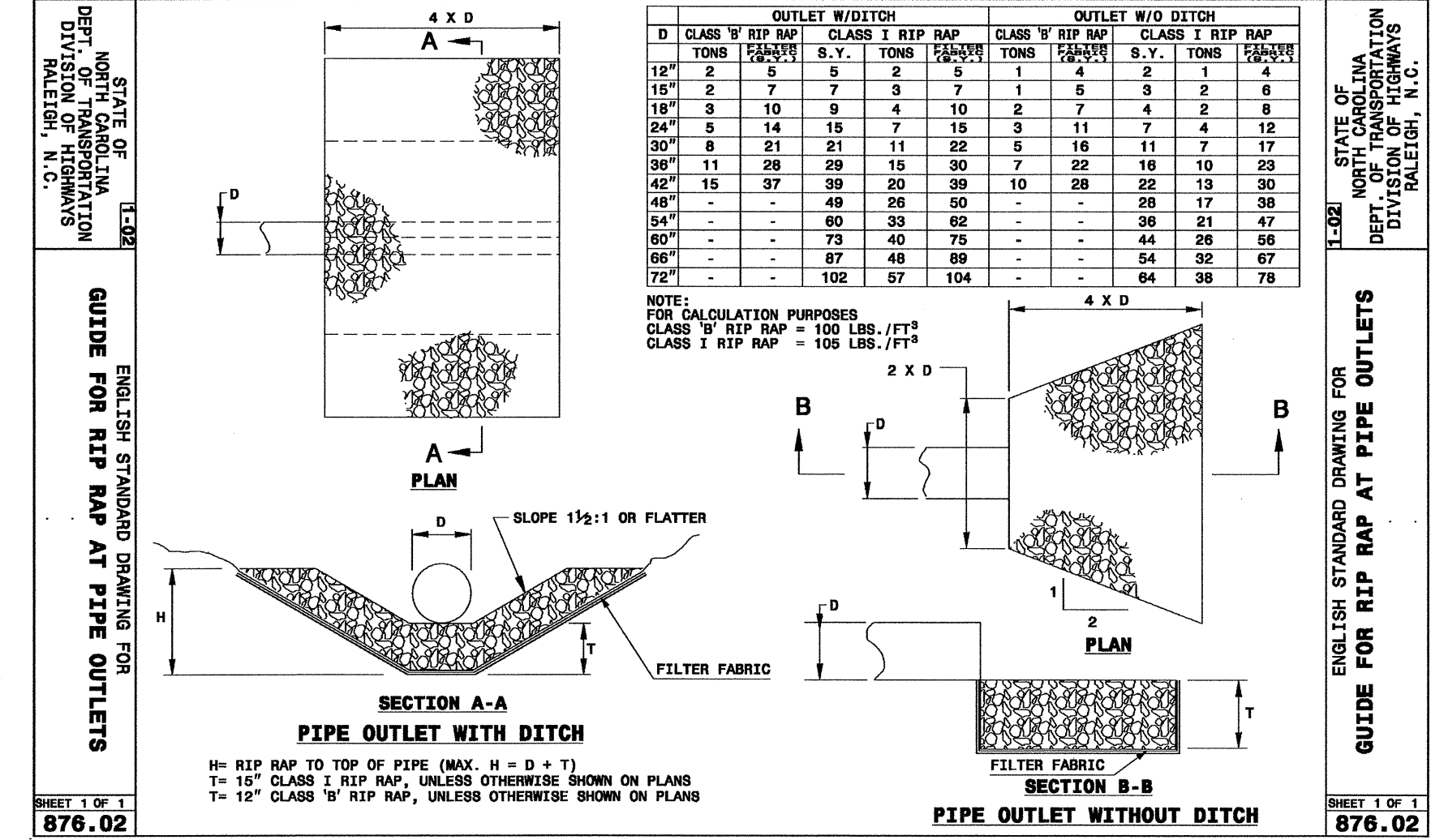
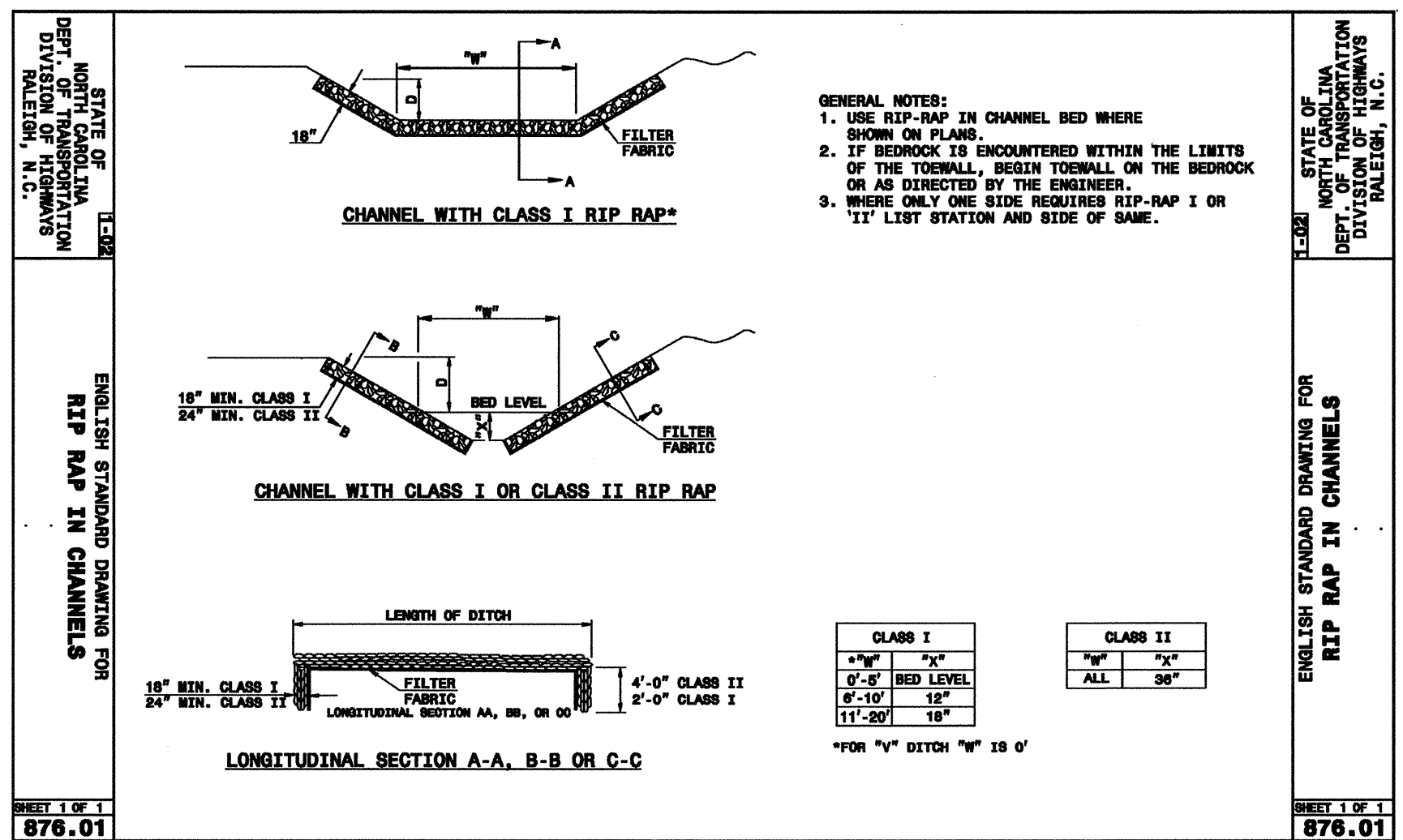
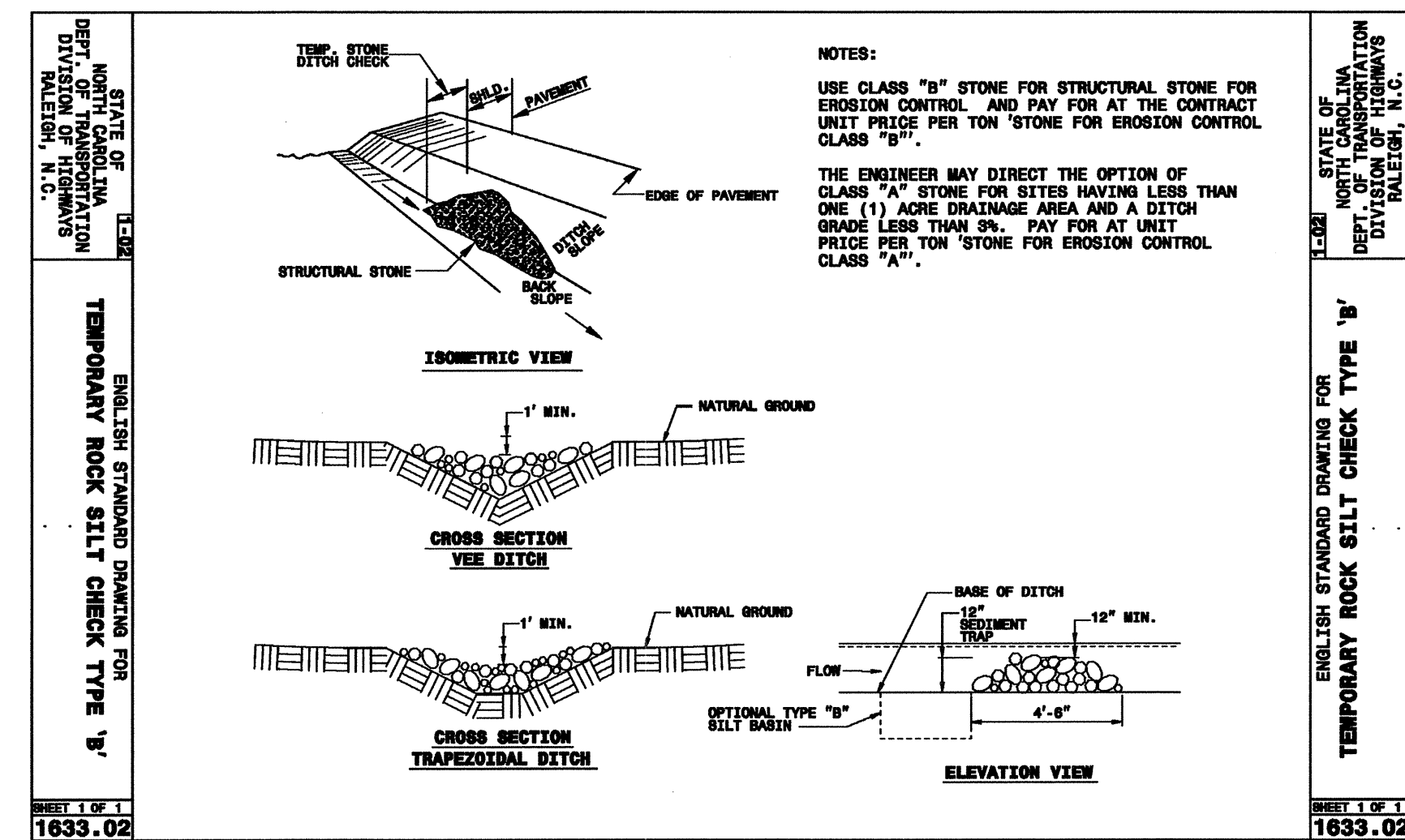
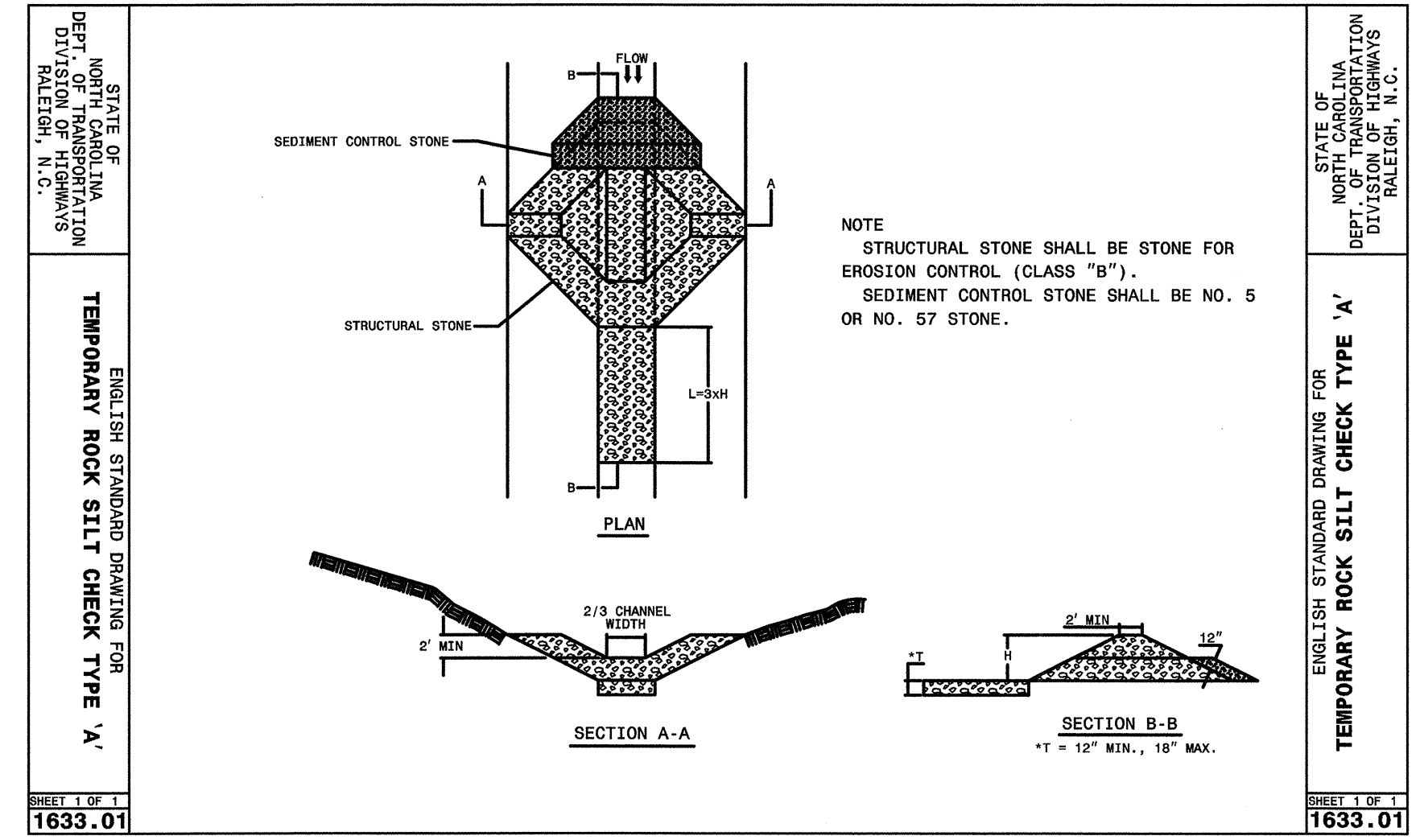
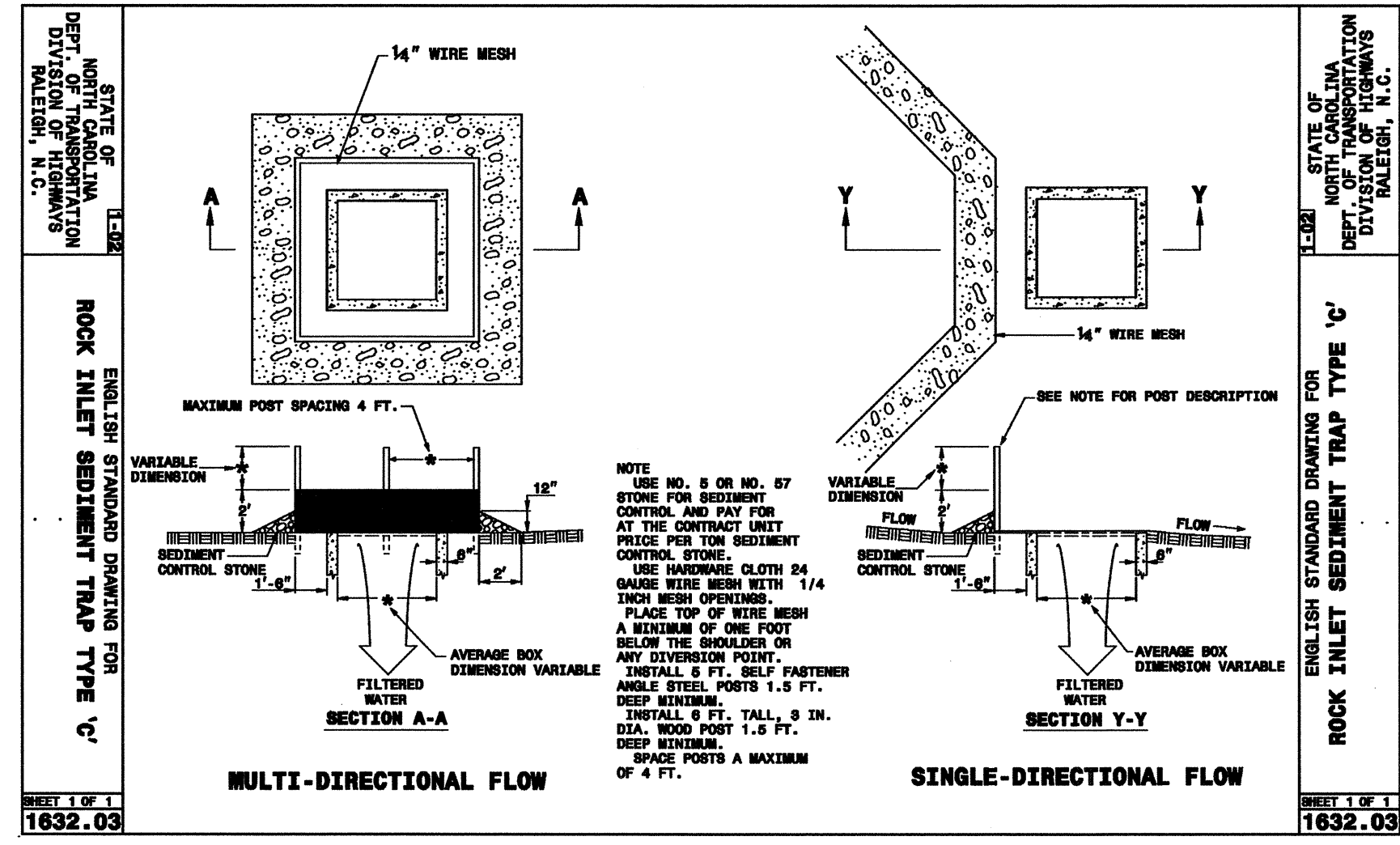
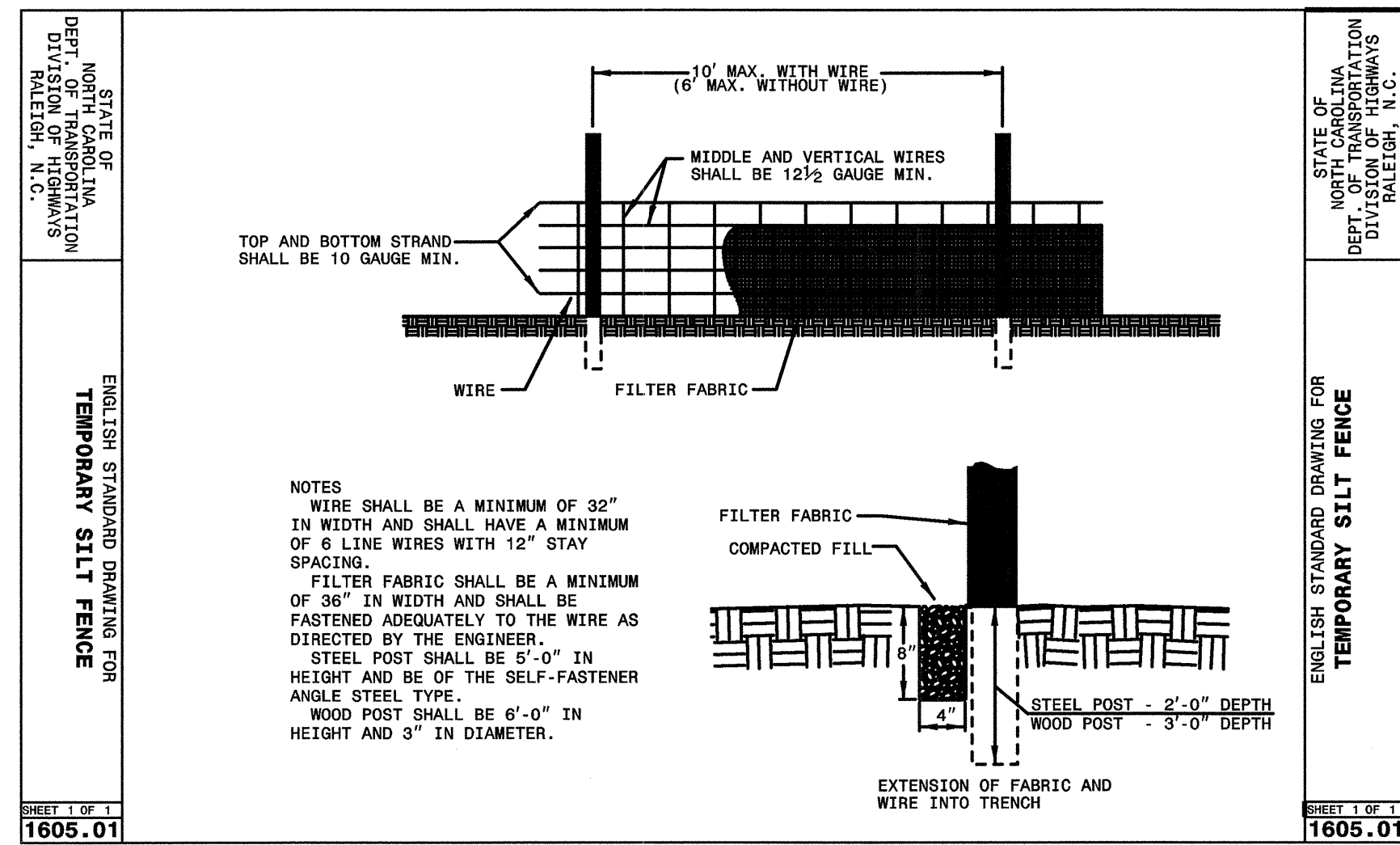


# EROSION CONTROL PLAN

## (3 OF 3)



WBS. NO. 37017  
 WAKE COUNTY  
 STATION: 14+04.00 -L-  
 REPLACES BRIDGE NO. 133  
 SHEET 3 OF 3

ANDREW H. HADSELL  
REGISTERED PROFESSIONAL ENGINEER

STATE OF NORTH CAROLINA  
DEPARTMENT OF TRANSPORTATION  
RALEIGH

**BRIDGE #133 ON SR 1930  
OVER RICHLAND CREEK**

REVISIONS						SHEET NO. EC-3
NO.	BY	DATE	NO.	BY	DATE	
1			1			TOTAL SHEETS
2			2			

559 Jones Franklin Rd. Suite 164  
Raleigh, N.C. 27606  
Bus: 919 851 8077  
Fax: 919 851 8007

ETHERILL ENGINEERING  
TRANSPORTATION PLANNING/DESIGN - BRIDGE/STRUCTURE DESIGN  
CIVIL/SITE DESIGN - GIS/GPS - CONSTRUCTION OBSERVATION

P:\4\100\140500\1\EN\Structures\DWG\eroston1.dgn  
 12/21/2005 1:16:57 AM

DRAWN BY: J. PENDERGRAFT DATE: 12-05  
 CHECKED BY: A. HADSELL DATE: 12-11