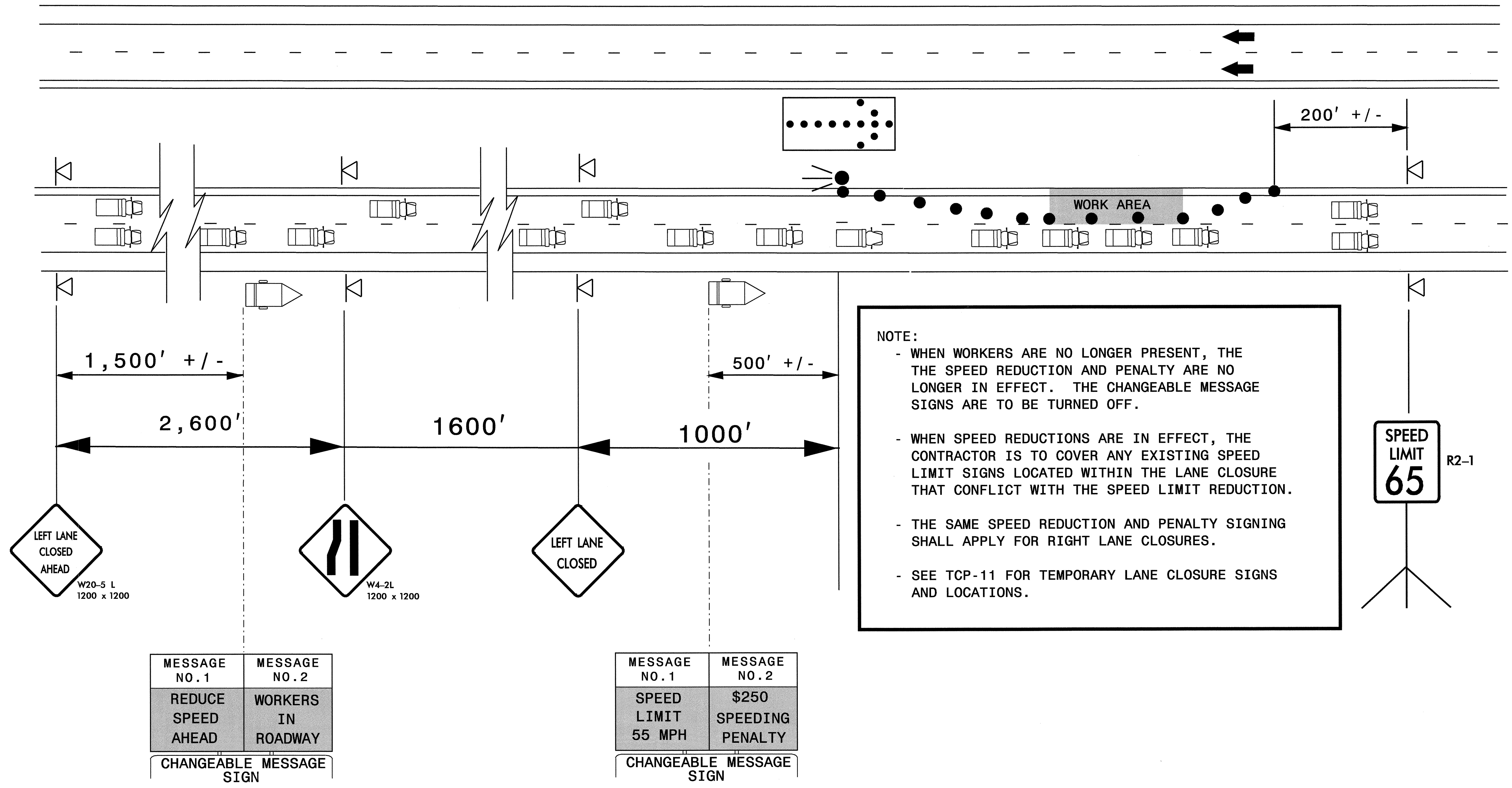
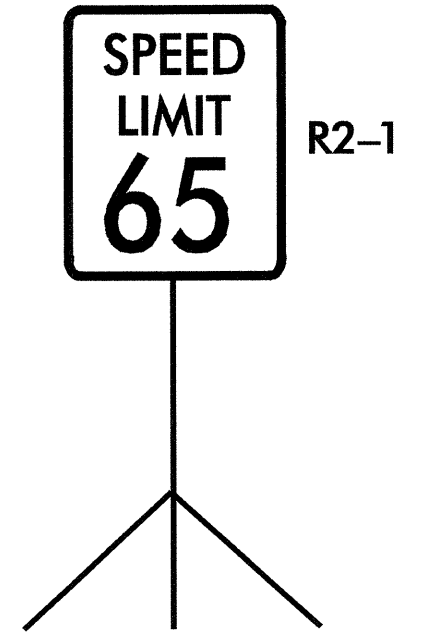


TYPICAL SPEED REDUCTION APPLICATION FOR LANE CLOSURES



NOTE:

- WHEN WORKERS ARE NO LONGER PRESENT, THE SPEED REDUCTION AND PENALTY ARE NO LONGER IN EFFECT. THE CHANGEABLE MESSAGE SIGNS ARE TO BE TURNED OFF.
- WHEN SPEED REDUCTIONS ARE IN EFFECT, THE CONTRACTOR IS TO COVER ANY EXISTING SPEED LIMIT SIGNS LOCATED WITHIN THE LANE CLOSURE THAT CONFLICT WITH THE SPEED LIMIT REDUCTION.
- THE SAME SPEED REDUCTION AND PENALTY SIGNING SHALL APPLY FOR RIGHT LANE CLOSURES.
- SEE TCP-11 FOR TEMPORARY LANE CLOSURE SIGNS AND LOCATIONS.



I4-NOV-2005 15:21
 \\ets-cctf03\14711\Traffic\TrafficControl\top\14711.tc_top10.cms speed_reduction.dgn
 pseymore AT WZTC206427

APPROVED:	DATE: 11/16/05	"TEMPORARY" SPEED LIMIT REDUCTIONS FOR LANE CLOSURES	
SCALE: NONE	DATE: 01/05/05		REVISIONS
DWG. BY: SK	DESIGN BY: SK		
REVIEWED BY: MMM			