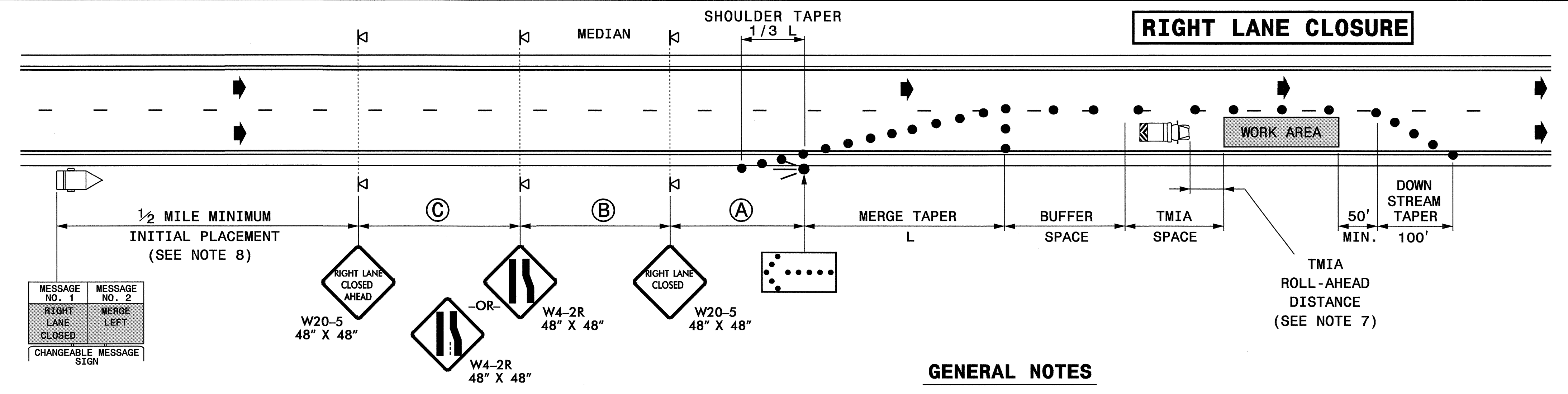
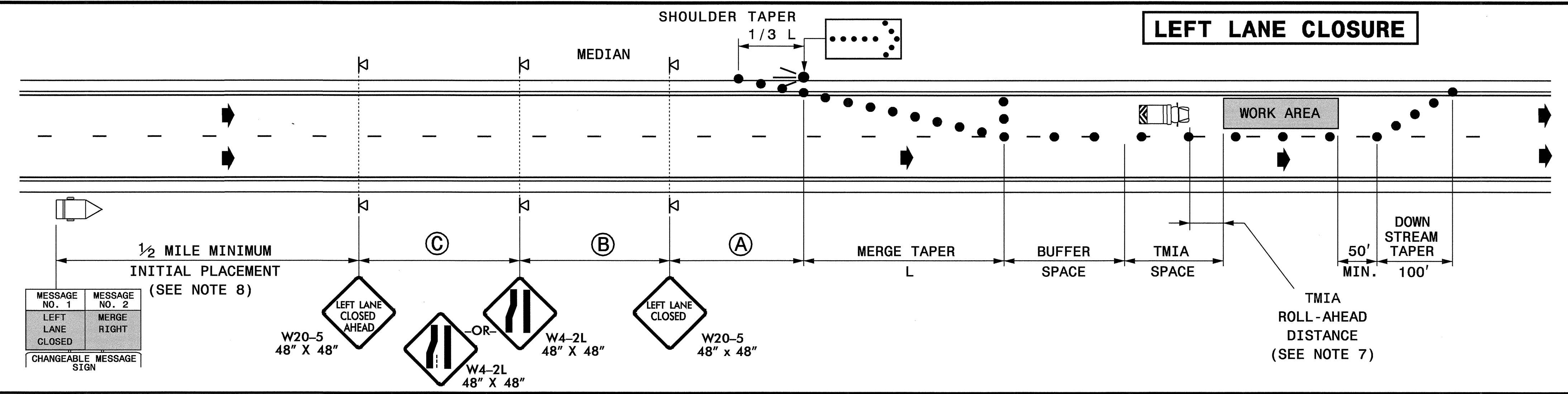


STATE OF NORTH CAROLINA
DEPT. OF TRANSPORTATION
DIVISION OF HIGHWAYS
RALEIGH, N.C.

ENGLISH STANDARD DRAWING FOR
TEMPORARY LANE CLOSURES
DIVIDED MULTI-LANE ROADWAY - 1 LANE CLOSED

SHEET 3 OF 9
1101D02



GENERAL NOTES

- 1- IF NECESSARY USE THIS STD. FOR ONE-WAY CITY TYPE STREETS WHERE SIGNS MAY BE MOUNTED ON BOTH SIDES OF THE ROADWAY.
- 2- PLACE ARROW PANELS ON THE SHOULDER (PAVED OR UNPAVED). PLACE ARROW PANELS WITHIN THE TAPER IF SHOULDERS DO NOT EXIST. MEET THE REQUIREMENTS FOR STOPPING SIGHT DISTANCE AT THE ARROW PANEL LOCATION. IF NEEDED, EXTEND LANE CLOSURES AT THE BUFFER SPACE, SUCH THAT STOPPING SIGHT DISTANCE TO THE ARROW PANEL IS MET. (SEE STD. 1101.11 SHEET 2)
- 3- PLACE DRUMS IN TAPERS AT THE MAXIMUM SPACING EQUAL IN FEET TO THE POSTED SPEED LIMIT. PLACE DRUMS ALONG THE BUFFER SPACE AND WORK AREA AT THE MAXIMUM SPACING EQUAL IN FEET TO 2 TIMES THE POSTED SPEED LIMIT.
- 4- REFER TO STD. 1101.11 SHEETS 1 & 4, FOR "L" DISTANCE AND SIGN SPACING.
- 5- REFER TO STD. 1101.02 SHEETS 6 AND 7 FOR TREATMENT OF LANE CLOSURES THRU INTERCHANGES.
- 6- INSTALL LANE CLOSURES WITH THE TRAFFIC FLOW, BEGINNING WITH DEVICES ON THE UPSTREAM SIDE OF TRAFFIC. REMOVE LANE CLOSURES AGAINST THE TRAFFIC FLOW, BEGINNING WITH DEVICES ON THE DOWNSTREAM SIDE OF TRAFFIC.
- 7- TMIA'S ARE REQUIRED ONLY WHEN A BUFFER SPACE CANNOT BE ATTAINED, OR WHEN DIRECTED BY THE ENGINEER OR THE PLANS. WHEN USED, POSITION THE TMIA TO MAINTAIN A ROLL-AHEAD DISTANCE AS RECOMMENDED BY THE MANUFACTURER.
- 8- PLACE CHANGEABLE MESSAGE SIGN (CMS) ON THE OUTSIDE OF THE TRAVELWAY AS DIRECTED BY THE ENGINEER. PLACE CMS APPROXIMATELY 1/2 MILE IN ADVANCE OF THE W20-5 SIGNS. IF TRAFFIC BACKS UP TO WHERE THE CMS IS INITIALLY PLACED, RELOCATE CMS 1/2 MILE FROM ANTICIPATED BACKUP. CONTINUE TO MONITOR TRAFFIC, MOVE CMS APPROXIMATELY 1/2 MILE IN CONJUNCTION WITH ANTICIPATED BACKUP.
- 9- MESSAGES MAY READ "LEFT LANE CLOSED" OR "RIGHT LANE CLOSED", "MERGE RIGHT" OR "MERGE LEFT" DEPENDING ON LANE BEING CLOSED.

LEGEND

	FLASHING ARROW PANEL (TYPE C)
	TRUCK MOUNTED IMPACT ATTENUATOR(TMIA)
	CHANGEABLE MESSAGE SIGN (CMS)
	DRUM
	PORTABLE SIGN
	DIRECTION OF TRAFFIC FLOW

STATE OF NORTH CAROLINA
DEPT. OF TRANSPORTATION
DIVISION OF HIGHWAYS
RALEIGH, N.C.

ENGLISH STANDARD DRAWING FOR
TEMPORARY LANE CLOSURES
DIVIDED MULTI-LANE ROADWAY - 1 LANE CLOSED

SHEET 3 OF 9
1101D02

APPROVED: DATE: 11/11/05

REPLACEMENT DETAIL FOR
RSD 1101.02

SCALE: NONE		REVISIONS
DATE: 11-07-05		
DWG. BY: PS		
DESIGN BY: JPG		
REVIEWED BY: MMM		CADD FILE

16-NOV-2005 11:58
\\ets-ccfs03\4711\Traffic\tr-af\con\tr\top\4711.tc_top\lane\closure05.dgn
AT WZTC206427
pseymore