

12-SEP-2005 14:07
 S:\Contracts\02toDetail\Special Details\enward\stds\02 Stds to Special Details\enward\84806\08-48a06.dgn
 enward AT PS222293

STATE OF NORTH CAROLINA
 DEPT. OF TRANSPORTATION
 DIVISION OF HIGHWAYS
 RALEIGH, N.C.

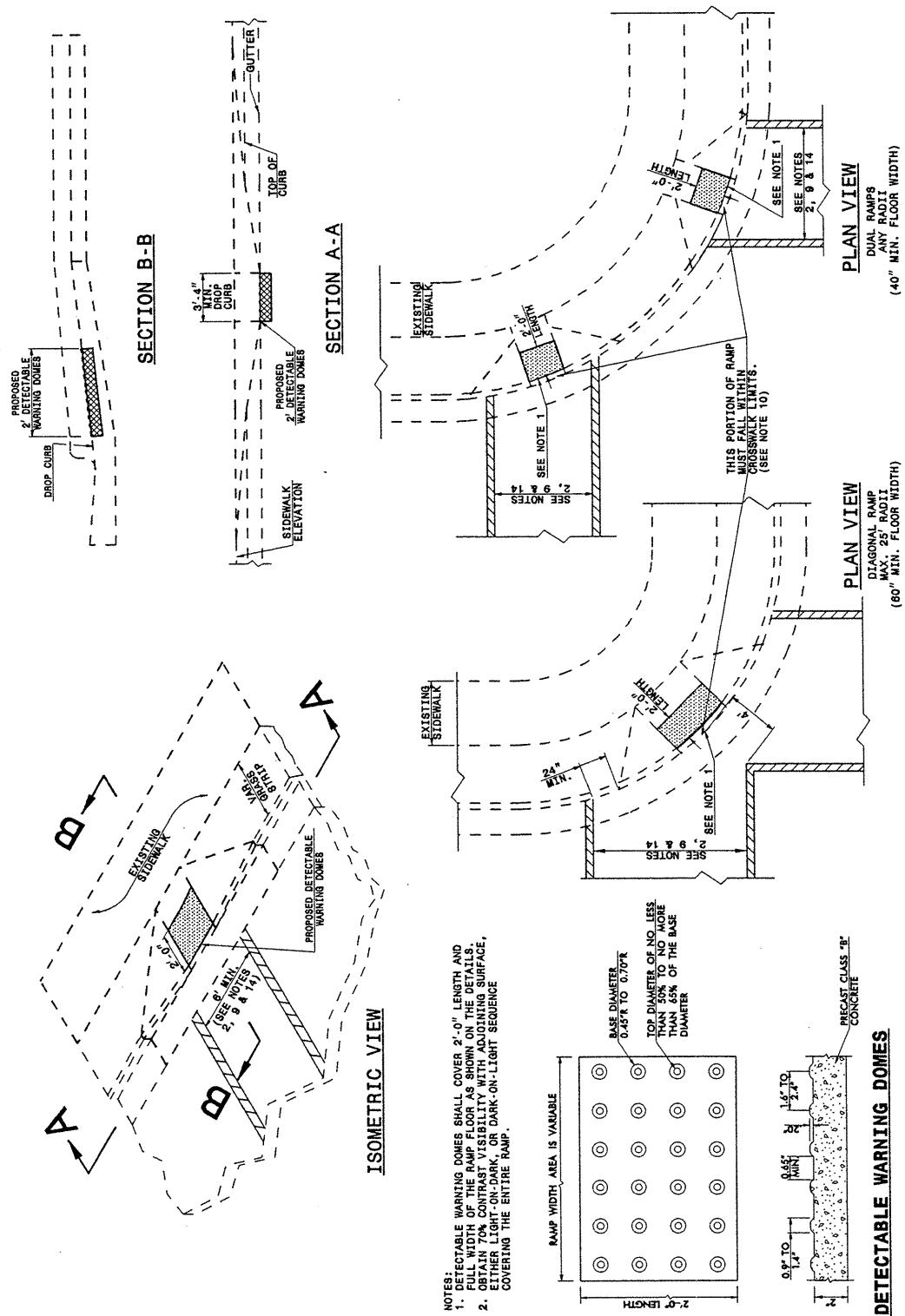
ENGLISH DETAIL DRAWING FOR
**RETROFITTING DETECTABLE WARNING DOMES
 ONTO EXISTING WHEELCHAIR RAMP**
 CURB CUT

SHEET 3 OF 5
848D06

STATE OF NORTH CAROLINA
 DEPT. OF TRANSPORTATION
 DIVISION OF HIGHWAYS
 RALEIGH, N.C.

ENGLISH DETAIL DRAWING FOR
**RETROFITTING DETECTABLE WARNING DOMES
 ONTO EXISTING WHEELCHAIR RAMP**
 CURB CUT

SHEET 3 OF 5
848D06



STATE OF NORTH CAROLINA
 DEPT. OF TRANSPORTATION
 DIVISION OF HIGHWAYS
 RALEIGH, N.C.

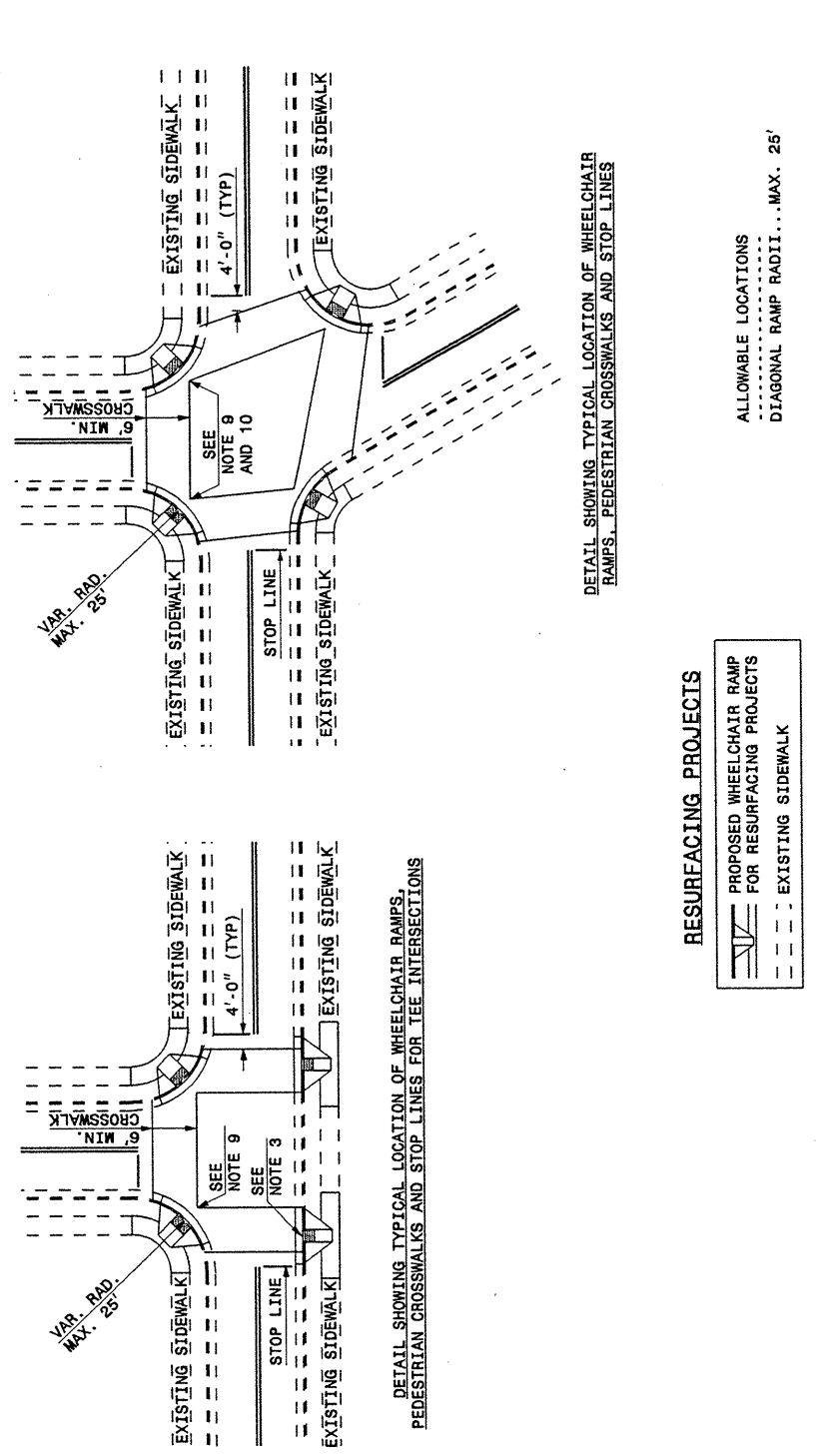
ENGLISH DETAIL DRAWING FOR
WHEELCHAIR RAMP
 CURB CUT

SHEET 4 OF 5
848D06

STATE OF NORTH CAROLINA
 DEPT. OF TRANSPORTATION
 DIVISION OF HIGHWAYS
 RALEIGH, N.C.

ENGLISH DETAIL DRAWING FOR
WHEELCHAIR RAMP
 CURB CUT

SHEET 4 OF 5
848D06



PROJECT SERVICES UNIT
STANDARDS AND SPECIAL DESIGN
 Office 919-250-4128 FAX 919-250-4119

SEE PLATE FOR TITLE

ORIGINAL BY: DETAIL 848D05 DATE: _____
 MODIFIED BY: E.E. WARD DATE: 09-06-05
 CHECKED BY: _____ DATE: _____
 FILE SPEC.: /usr/stds/02todetail/english/84806/848d06.dgn