

I:\SEP-2005\1407
 S:\Contracts\Projects\Special Details\enward\stds\02\stds to Special Details/english\84806\0848d06.dgn
 enward

STATE OF
 NORTH CAROLINA
 DEPT. OF TRANSPORTATION
 DIVISION OF HIGHWAYS
 RALEIGH, N.C.

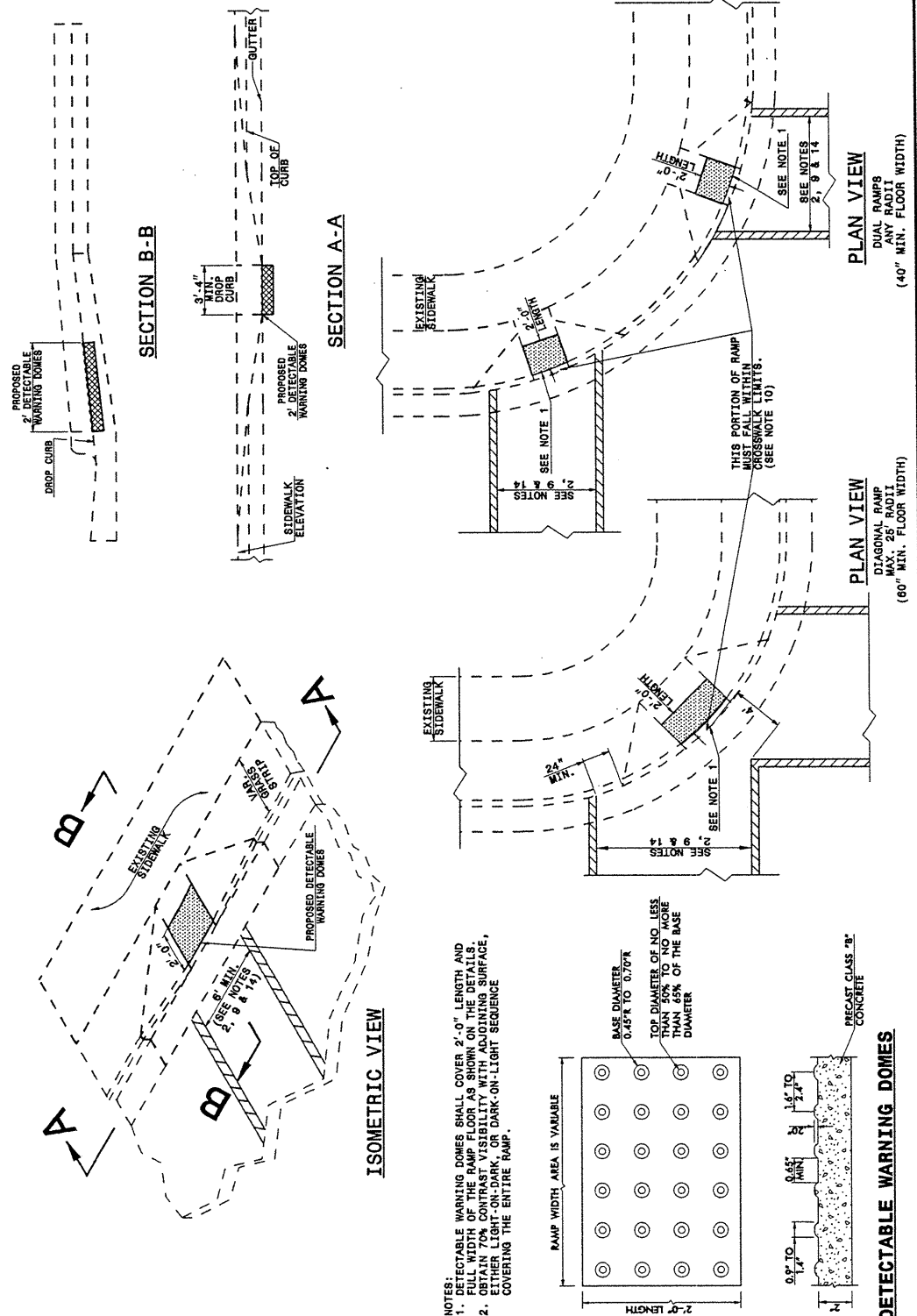
ENGLISH DETAIL DRAWING FOR
**RETROFITTING DETECTABLE WARNING DOMES
 ONTO EXISTING WHEELCHAIR RAMP**
 CURB CUT

SHEET 3 OF 5
848D06

STATE OF
 NORTH CAROLINA
 DEPT. OF TRANSPORTATION
 DIVISION OF HIGHWAYS
 RALEIGH, N.C.

ENGLISH DETAIL DRAWING FOR
**RETROFITTING DETECTABLE WARNING DOMES
 ONTO EXISTING WHEELCHAIR RAMP**
 CURB CUT

SHEET 3 OF 5
848D06



STATE OF
 NORTH CAROLINA
 DEPT. OF TRANSPORTATION
 DIVISION OF HIGHWAYS
 RALEIGH, N.C.

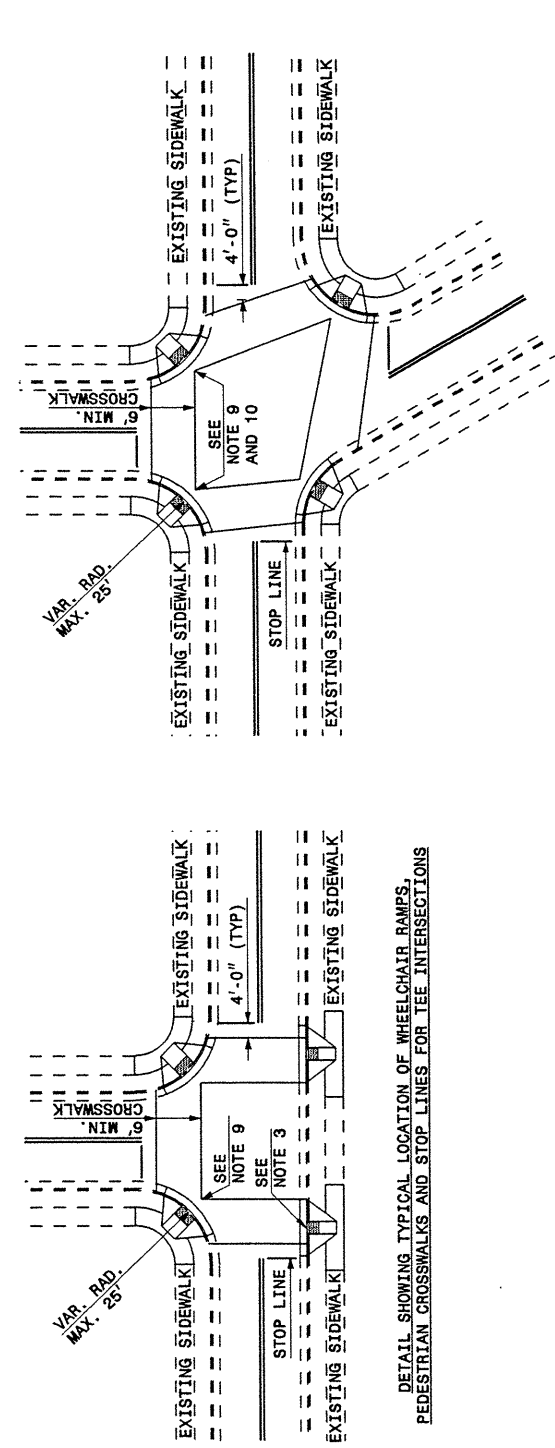
ENGLISH DETAIL DRAWING FOR
WHEELCHAIR RAMP
 CURB CUT

SHEET 4 OF 5
848D06

STATE OF
 NORTH CAROLINA
 DEPT. OF TRANSPORTATION
 DIVISION OF HIGHWAYS
 RALEIGH, N.C.

ENGLISH DETAIL DRAWING FOR
WHEELCHAIR RAMP
 CURB CUT

SHEET 4 OF 5
848D06



RESURFACING PROJECTS

PROPOSED WHEELCHAIR RAMP FOR RESURFACING PROJECTS

ALLOWABLE LOCATIONS

DIAGONAL RAMP RADI... MAX. 25'

**PROJECT SERVICES UNIT
 STANDARDS AND SPECIAL DESIGN**
 Office 919-250-4128 FAX 919-250-4119

SEE PLATE FOR TITLE

ORIGINAL BY: DETAIL 848D05 DATE: 09-06-05
 MODIFIED BY: E.E. WARD DATE: 09-06-05
 CHECKED BY: DATE:
 FILE SPEC.: /usr/stds/02tdetail/english/84806/848d06.dgn