

5/14/99

PROJECT REFERENCE NO. B-4152	SHEET NO. 5
ROADWAY DESIGN ENGINEER	HYDRAULICS ENGINEER

**BRIDGE HYDRAULIC DATA**

DESIGN DISCHARGE = 2760 CFS  
 DESIGN FREQUENCY = 50 YRS  
 DESIGN HW ELEVATION = 145.69 FT  
 BASE DISCHARGE = 3480 CFS  
 BASE FREQUENCY = 100 YRS  
 BASE HW ELEVATION = 147.14 FT  
 OVERTOPPING DISCHARGE = 3480 CFS  
 OVERTOPPING FREQUENCY = 50+ YRS  
 OVERTOPPING ELEVATION = 146.25 FT

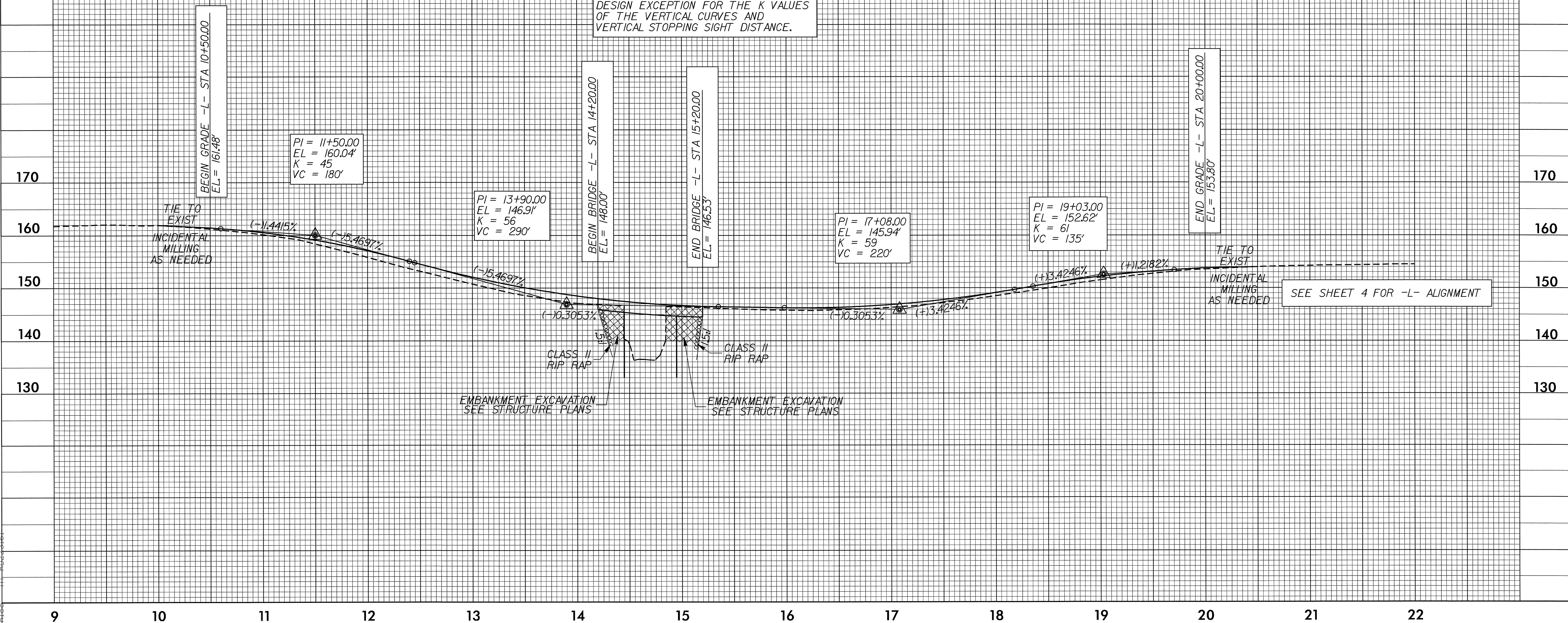
= FT

DATE OF SURVEY = 8/13/04  
 W.S. ELEVATION AT DATE OF SURVEY = 140.26 FT

-L-

BM #1  
 -L- STA 14+92.59  
 105.36' LT  
 ELEV. 140.26'

DESIGN EXCEPTION FOR THE K VALUES OF THE VERTICAL CURVES AND VERTICAL STOPPING SIGHT DISTANCE.



19-AUG-2005 15:05  
 R:\Roadway\Proj\B-4152-rdy-pf1\_030219.dgn  
 chlee