

NOTES

THE GUARDRAIL ANCHOR ASSEMBLY SHALL CONSIST OF A 1/4" HOLD DOWN PLATE AND 7 - 7/8" Ø BOLTS WITH NUTS AND WASHERS.

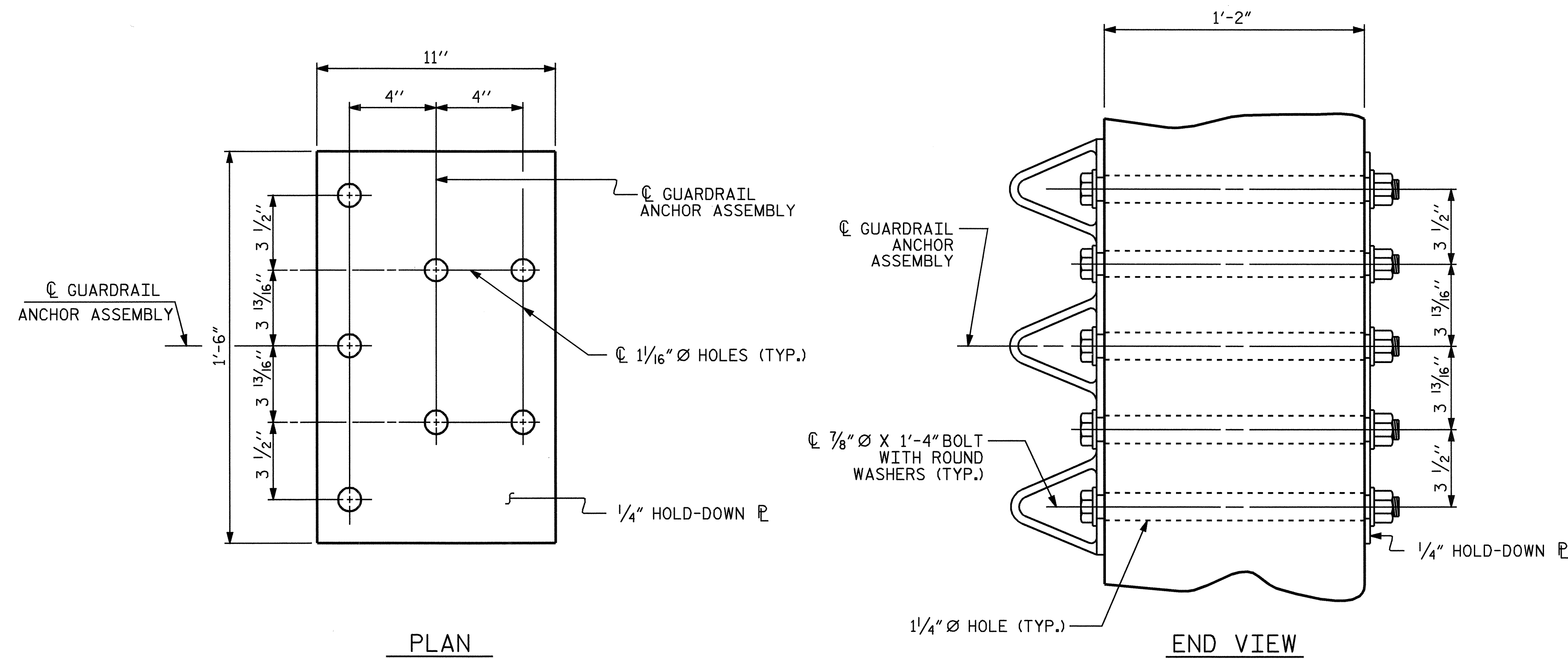
THE HOLD-DOWN PLATE SHALL CONFORM TO AASHTO M270 GRADE 36. AFTER FABRICATION, THE HOLD-DOWN PLATE SHALL BE HOT-DIP GALVANIZED IN ACCORDANCE WITH AASHTO M111.

BOLTS SHALL CONFORM TO THE REQUIREMENTS OF ASTM A307 AND NUTS SHALL CONFORM TO THE REQUIREMENTS OF AASHTO M291. BOLTS, NUTS AND WASHERS SHALL BE GALVANIZED. AT THE CONTRACTOR'S OPTION, STAINLESS STEEL BOLTS, NUTS AND WASHERS MAY BE USED AS AN ALTERNATE FOR THE 7/8" Ø GALVANIZED BOLTS, NUTS AND WASHERS. THEY SHALL CONFORM TO OR EXCEED THE MECHANICAL REQUIREMENTS OF ASTM A307. THE USE OF THIS ALTERNATE SHALL BE APPROVED BY THE ENGINEER.

AFTER INSTALLATION, THE EXPOSED THREAD OF THE BOLT SHALL BE BURRED WITH A SHARP POINTED TOOL.

THE VERTICAL REINFORCING BARS MAY BE SHIFTED SLIGHTLY IN THE END POST TO CLEAR ASSEMBLY BOLTS.

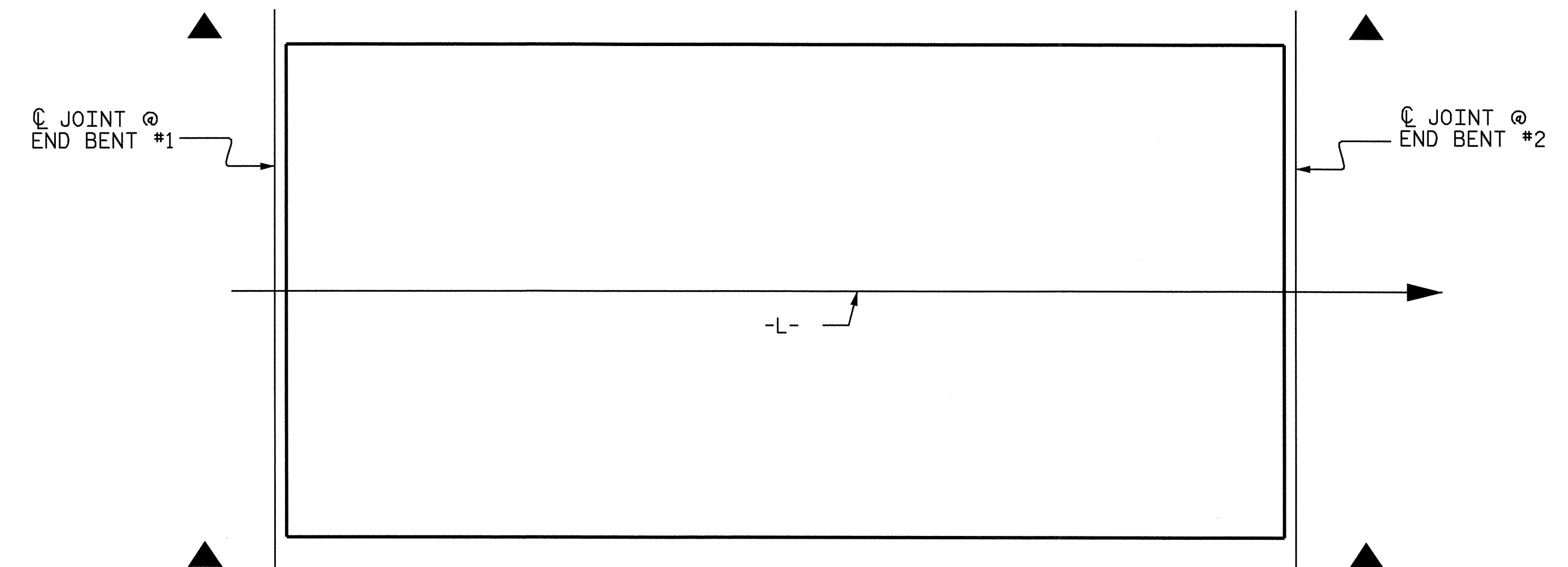
THE 1 1/4" Ø HOLES SHALL BE FORMED OR DRILLED WITH A CORE BIT. IMPACT TOOLS WILL NOT BE PERMITTED. ANY CONCRETE DAMAGED BY THIS WORK SHALL BE REPAIRED TO THE SATISFACTION OF THE ENGINEER.



PLAN

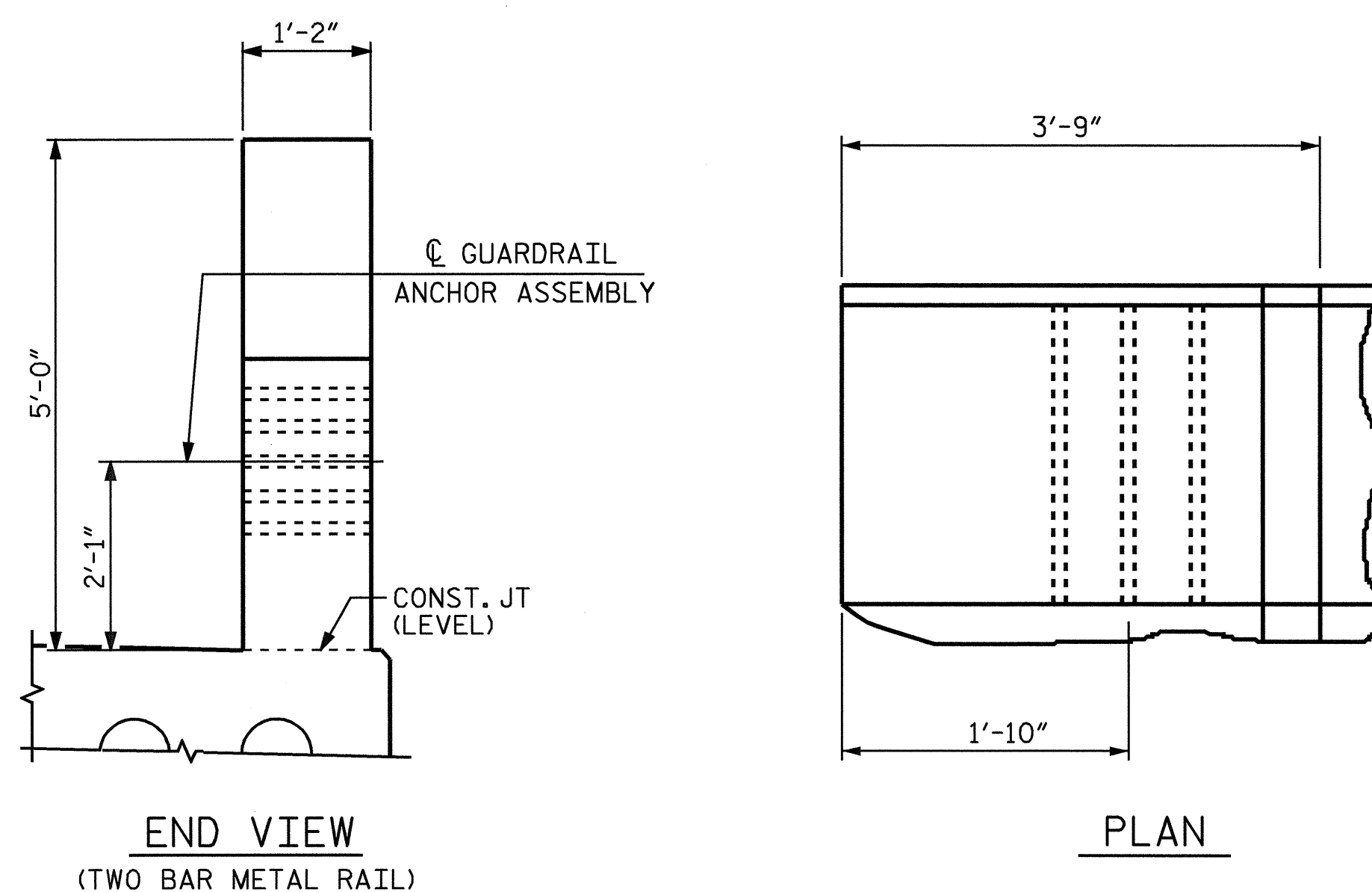
END VIEW

GUARDRAIL ANCHOR ASSEMBLY DETAILS



SKETCH SHOWING POINTS OF ATTACHMENT

▲ LOCATION OF GUARDRAIL ATTACHMENT



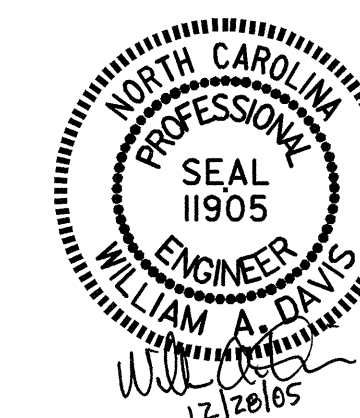
END VIEW

PLAN

LOCATION OF GUARDRAIL ANCHOR AT END POST

| | |
|-----------------------------|-----------------------|
| ASSEMBLED BY : J. G. KHARVA | DATE : 08/12/05 |
| CHECKED BY : BOB WRIGHT | DATE : 08/17/05 |
| DRAWN BY : EEM 6/94 | REV. 8/16/99 RWW/LES |
| CHECKED BY : RGW 6/94 | REV. 10/17/00 RWW/LES |
| | REV. 5/7/03 RWW/JTE |

27-DEC-2005 11:50
 FASTRUCT2\B4152\Jkharva\Drawings\B4152.sd.pt.dgn
 rwwright



PROJECT NO. B-4152
HOKE COUNTY
 STATION: 14+70.00 -L-

STATE OF NORTH CAROLINA
 DEPARTMENT OF TRANSPORTATION
 RALEIGH
 STANDARD
 GUARDRAIL ANCHORAGE
 DETAILS
 FOR METAL RAILS

| | | | |
|-----------|-----|-------|-----------------|
| JUNE | | 1994 | |
| REVISIONS | | | |
| NO. | BY: | DATE: | SHEET NO. |
| 1 | | 3 | S-12 |
| 2 | | 4 | TOTAL SHEETS 26 |

STD. NO. BMR8