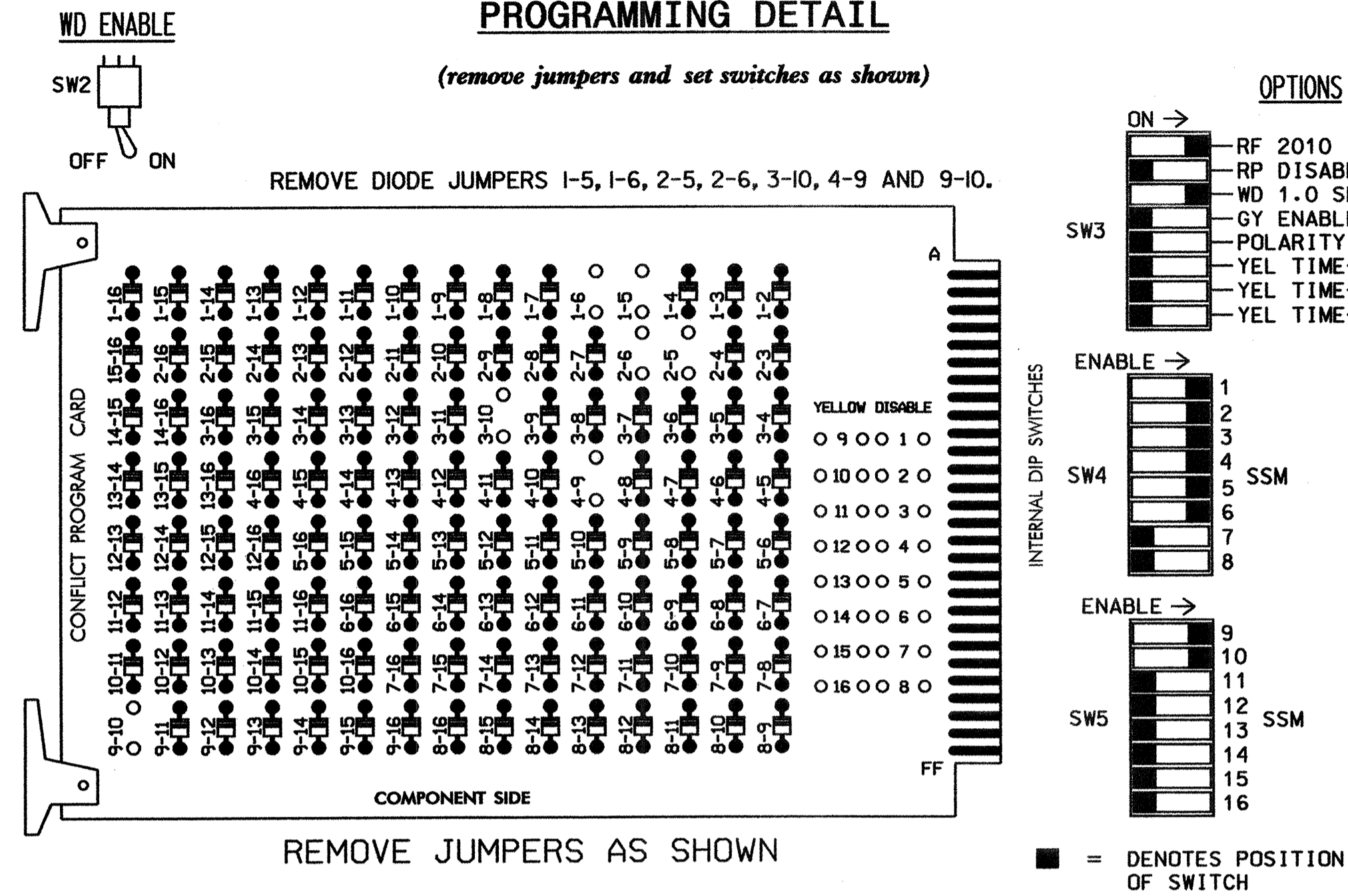


EDI MODEL 2010ECL CONFLICT MONITOR

PROGRAMMING DETAIL



NOTES:

- CARD IS PROVIDED WITH ALL DIODE JUMPERS IN PLACE. REMOVAL OF ANY JUMPER ALLOWS ITS CHANNELS TO RUN CONCURRENTLY.
- MAKE SURE JUMPERS SEL1-SEL5 ARE PRESENT ON THE MONITOR BOARD.

NOTES

- To prevent "flash-conflict" problems, insert red flash program blocks for all unused vehicle load switches in the output file. The installer shall verify that signal heads flash in accordance with the Signal Plans.
- Ensure that Red Enable is active at all times during normal operation. To prevent Red Failures on unused monitor channels, tie unused red monitor inputs 7,8, 11,12,13,14,15 & 16 to load switch AC+ per the cabinet manufacturer's instructions.
- Program phases 2 and 6, on the controller unit, for Start Up In Green.
- Program phases 2 and 6, on the controller unit, for Yellow Flash.
- Enable Simultaneous Gap-Out, on the controller unit, for all phases.
- The cabinet and controller are part of the Gastonia City System.

FIELD CONNECTION HOOK-UP CHART

LOAD SWITCH NO.	S1	S2	S2P	S3	S4	S4P	S5	S6	S6P	S7	S8	S8P	S9	S10	S11	S12	S13	S14
PHASE	1	2	2 PED	3	4	4 PED	5	6	6 PED	7	8	8 PED	OLA	OLB ¹	SPARE	OLC	OLD	SPARE
SIGNAL HEAD NO.	11	21,22	NU	31	41	NU	51	61,62	NU	NU	NU	NU	41,42	32,33	NU	NU	NU	NU
GREEN		130							136					A123	A126			
YELLOW		129							135					A122	A125			
RED		128			*				134					A121	A124			
RED ARROW	125			116				131										
YELLOW ARROW	126			117	102			132										
GREEN ARROW	127			118	103			133										

NU = NOT USED

* DENOTES INSTALL LOAD RESISTOR. SEE LOAD RESISTOR INSTALLATION DETAIL THIS PAGE.

¹ WIRE OVERLAP B TO FLASH ON FLASHER #2, CIRCUIT #1

EQUIPMENT INFORMATION

CONTROLLER.....CONTRACTOR SUPPLIED 2070L
 CABINETCONTRACTOR SUPPLIED 332
 SOFTWAREECONOLITE OASIS 3.00.92
 CABINET MOUNT.....BASE
 OUTPUT FILE POSITIONS...18 (12-STD, 6-AUX)
 LOAD SWITCHES USED.....S1,S2,S3,S4,S5,S6,S9,S10
 PHASES USED.....1,2,3,4,5,6,9*
 OVERLAP A.....4+9
 OVERLAP B.....3+9

*Phase used during preempt only

PREEMPT ONLY PHASE OMIT NOTE

(program controller as shown below)

FROM MAIN MENU PRESS '2' (PHASE CONTROL), THEN '1' (PHASE CONTROL FUNCTIONS). PROGRAM PHASE 9 FOR 'OMIT PHASE' AND PHASES 1, 2, 3, 4, 5 AND 6 FOR 'STARTUP CALLS'. THIS IS TO PREVENT PHASE 9 FROM BEING SERVED WHEN NOT IN PREEMPT.

INPUT FILE POSITION LAYOUT

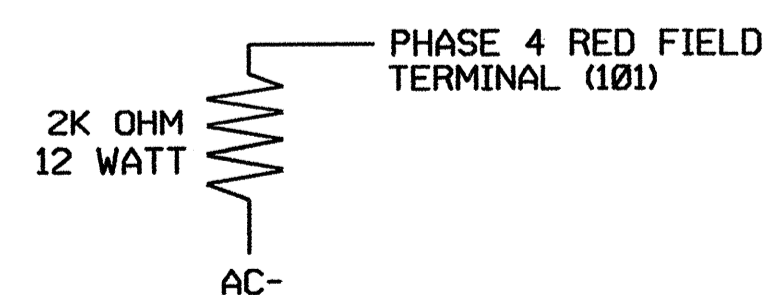
(front view)

FILE "I"	1	2	3	4	5	6	7	8	9	10	11	12	13	14
U	∅ 1	∅ 3	∅ 3	∅ 4	∅ 4	∅ 4	∅ 4	∅ 4	∅ 4	∅ 4	∅ 4	∅ 4	∅ 4	FS
L	1A	3A	3C	4A	4B	4B	4B	4B	4B	4B	4B	4B	4B	DC ISOLATOR
U	NOT USED	∅ 3	NOT USED	∅ 4	∅ 4	∅ 4	∅ 4	∅ 4	∅ 4	∅ 4	∅ 4	∅ 4	∅ 4	ST
L	NOT USED	3B	NOT USED	4B	4B	4B	4B	4B	4B	4B	4B	4B	4B	DC ISOLATOR
U	∅ 5	∅ 5	∅ 5	∅ 5	∅ 5	∅ 5	∅ 5	∅ 5	∅ 5	∅ 5	∅ 5	∅ 5	∅ 5	PRE1
L	5A	5A	5A	5A	5A	5A	5A	5A	5A	5A	5A	5A	5A	AC ISOLATOR
U	NOT USED	∅ 5	∅ 5	∅ 5	∅ 5	∅ 5	∅ 5	∅ 5	∅ 5	∅ 5	∅ 5	∅ 5	∅ 5	NOT USED
L	NOT USED	∅ 5	∅ 5	∅ 5	∅ 5	∅ 5	∅ 5	∅ 5	∅ 5	∅ 5	∅ 5	∅ 5	∅ 5	NOT USED

EX.: 1A, 2A, ETC. = LOOP NO.'S

FS = FLASH SENSE
 ST = STOP TIME
 PRE = PREEMPT

LOAD RESISTOR INSTALLATION DETAIL



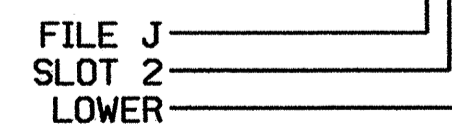
NOTE: THE PURPOSE OF THIS RESISTOR IS TO LOAD THE CHANNEL RED MONITOR INPUT IN ORDER FOR THE SIGNAL SEQUENCE MONITOR TO USE THE FULL SIGNAL SEQUENCE MONITORING CAPABILITY ON CHANNELS THAT DO NOT USE THE RED DISPLAY IN THE FIELD.

THIS ELECTRICAL DETAIL IS FOR THE SIGNAL DESIGN: 12-0043
 DESIGNED: OCTOBER 2005
 SEALED: 10/28/05
 REVISED:

INPUT FILE CONNECTION & PROGRAMMING CHART

LOOP NO.	LOOP TERMINAL	INPUT FILE POS.	PIN NO.	INPUT ASSIGNMENT NO.	DETECTOR NO.	NEMA PHASE	CALL	EXTEND	FULL TIME DELAY	STRETCH TIME	DELAY TIME
1A	TB2-1,2	I1U	56	18	1	1	Y	Y			3
3A	TB2-5,6	I2U	39	1	2	3	Y	Y			
3B	TB2-7,8	I2L	43	5	12	3	Y	Y			
3C	TB2-9,10	I3U	63	25	32	3	Y	Y			10
4A	TB4-9,10	I6U	41	3	4	4	Y	Y			
4B	TB4-11,12	I6L	45	7	14	4	Y	Y			10
5A	TB3-1,2	J1U	55	17	5	5	Y	Y			3

INPUT FILE POSITION LEGEND: J2L



PHASE SEQUENCE PROGRAMMING DETAIL

(program controller as shown below)

FROM OASIS LOCAL CONTROLLER MAIN MENU
 SELECT: 4 PHASE SEQUENCE

PHASE SEQUENCE: PAGE 1	NEXT: PAGES										
RNG	LEAD	BARRIER 1	X-LAG	LEAD	BARRIER 2	X-LAG	LEAD	BARRIER 2	X-LAG		
1	1	2	0	0	3	4	0	0	0	0	0
2	5	6	0	0	0	0	0	0	0	0	0
3	0	0	0	0	0	0	0	0	0	0	0
4	0	0	0	0	0	0	0	0	0	0	0

OVERLAP PROGRAMMING DETAIL

(program controller as shown below)

FROM MAIN MENU PRESS '8' (OVERLAPS), THEN '1' (VEHICLE OVERLAP SETTINGS).

PAGE 1: VEHICLE OVERLAP 'A' SETTINGS
 PHASE: 12345678910111213141516
 VEH OVL PARENTS: X X
 VEH OVL NOT VEH: X X
 VEH OVL NOT PED: X X
 VEH OVL GRN EXT: X X
 STARTUP COLOR: RED - YELLOW - GREEN
 FLASH COLORS: RED - YELLOW - GREEN
 SELECT VEHICLE OVERLAP OPTIONS: (Y/N)
 FLASH YELLOW IN CONTROLLER FLASH?...N
 GREEN EXTENSION (0-255 SEC)...0.0
 YELLOW CLEAR (0=PARENT,3-25.5 SEC)...0.0
 RED CLEAR (0=PARENT,0.1-25.5 SEC)...0.0
 OUTPUT AS PHASE # (0=NONE, 1-16)...0

PRESS '+'

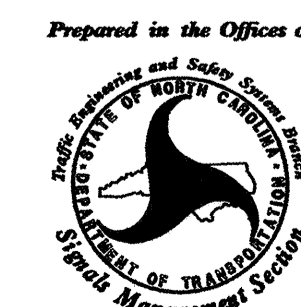
PAGE 1: VEHICLE OVERLAP 'B' SETTINGS
 PHASE: 12345678910111213141516
 VEH OVL PARENTS: X X
 VEH OVL NOT VEH: X X
 VEH OVL NOT PED: X X
 VEH OVL GRN EXT: X X
 STARTUP COLOR: RED - YELLOW - GREEN
 FLASH COLORS: RED - YELLOW - GREEN
 SELECT VEHICLE OVERLAP OPTIONS: (Y/N)
 FLASH YELLOW IN CONTROLLER FLASH?...N
 GREEN EXTENSION (0-255 SEC)...0.0
 YELLOW CLEAR (0=PARENT,3-25.5 SEC)...0.0
 RED CLEAR (0=PARENT,0.1-25.5 SEC)...0.0
 OUTPUT AS PHASE # (0=NONE, 1-16)...0

OVERLAP PROGRAMMING COMPLETE

THIS DETAIL SUPERSEDES THE DETAIL SIGNED AND SEALED 3/15/05.

SIGNAL UPGRADE - SHEET 1 OF 2

ELECTRICAL AND PROGRAMMING DETAILS FOR:



122 N. McDowell St., Raleigh, NC 27603

US 29-74/NC 274
 (E. FRANKLIN BOULEVARD)
 AT
 NC 274 (BROAD STREET)

DIVISION 12 GASTON COUNTY GASTONIA
 PLAN DATE: OCTOBER 2005 REVIEWED BY: TODD JOYCE
 PREPARED BY: JAMES W. PESZKO REVIEWED BY:

REVISIONS	INIT.	DATE

SEAL
 NORTH CAROLINA PROFESSIONAL ENGINEER
 SEAL 022013
 GEORGE C. BROWN
 SIGNATURE DATE 11/2/05
 SIG. INVENTORY NO. 12-0043