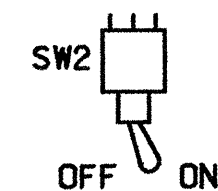


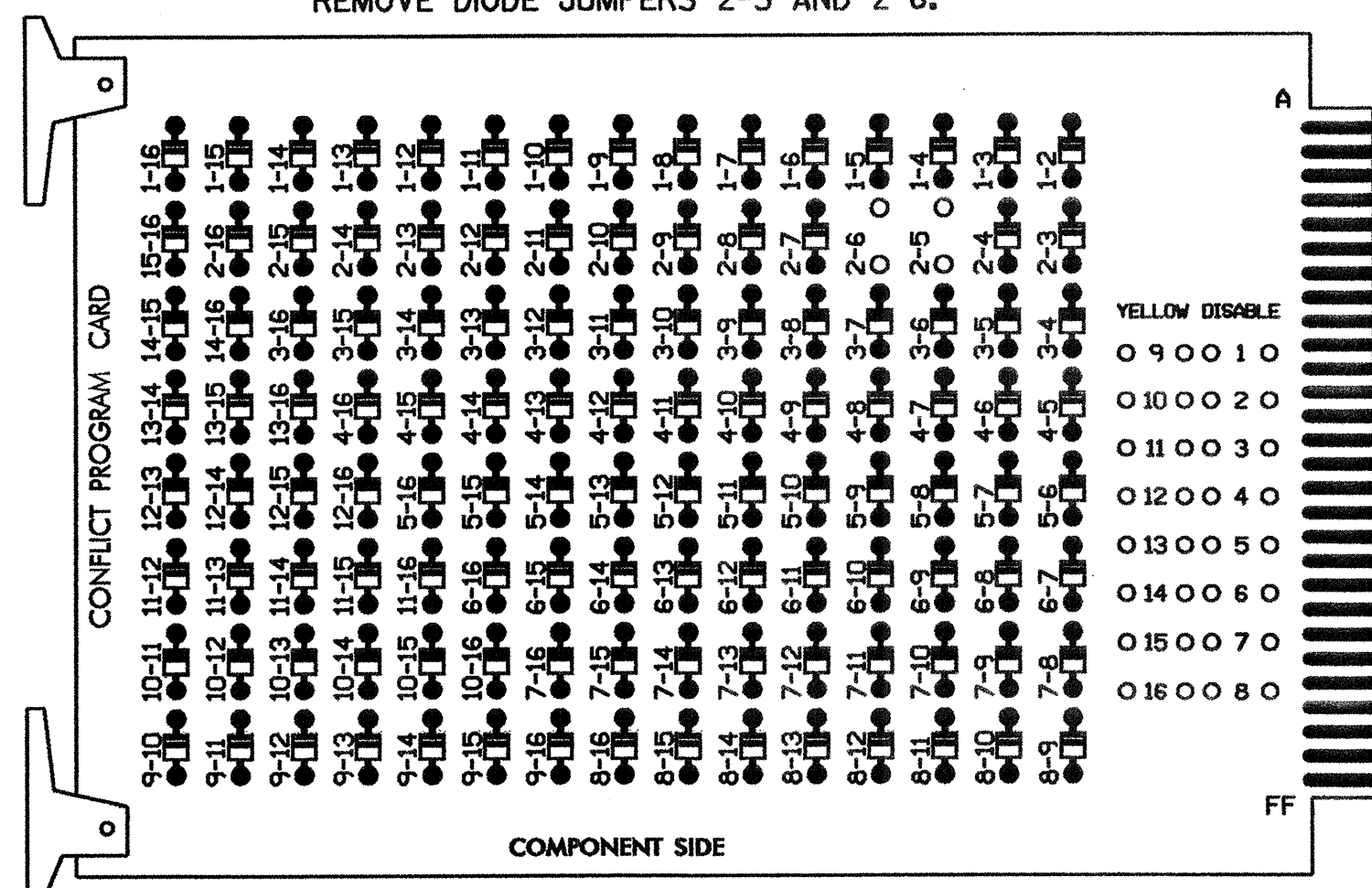
EDI MODEL 2010ECL CONFLICT MONITOR

PROGRAMMING DETAIL

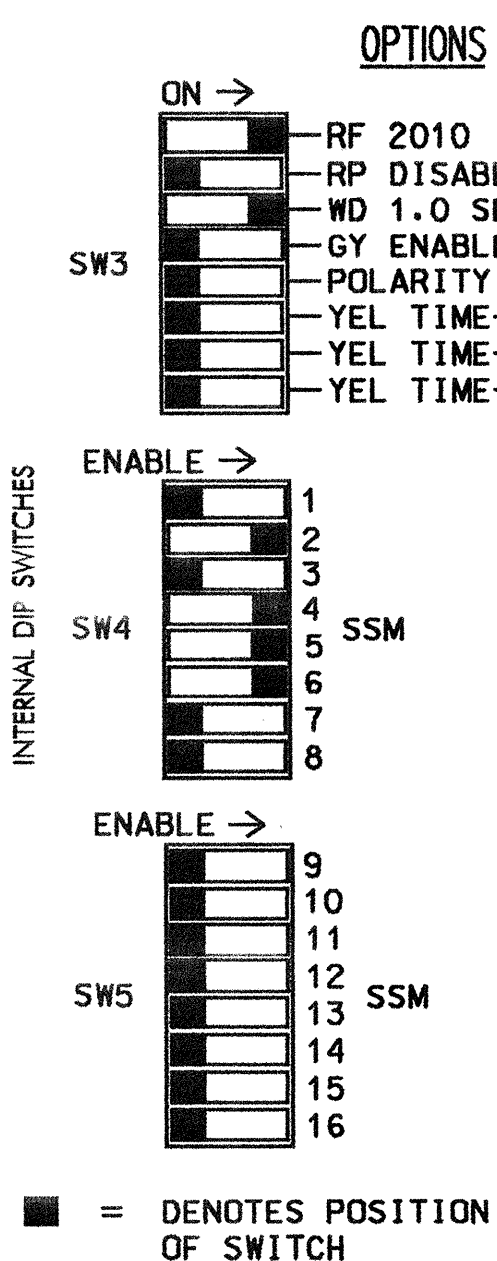
WD ENABLE



(remove jumpers and set switches as shown)



REMOVE JUMPERS AS SHOWN



NOTES:

- CARD IS PROVIDED WITH ALL DIODE JUMPERS IN PLACE. REMOVAL OF ANY JUMPER ALLOWS ITS CHANNELS TO RUN CONCURRENTLY.
- MAKE SURE JUMPERS SEL1-SEL5 ARE PRESENT ON THE MONITOR BOARD.

NOTES

- TO PREVENT "FLASH-CONFLICT" PROBLEMS, INSERT RED FLASH PROGRAM BLOCKS FOR ALL UNUSED VEHICLE LOAD SWITCHES IN THE OUTPUT FILE. THE INSTALLER SHALL VERIFY THAT SIGNAL HEADS FLASH IN ACCORDANCE WITH THE SIGNAL PLANS.
- ENSURE THAT RED ENABLE IS ACTIVE AT ALL TIMES DURING NORMAL OPERATION. TO PREVENT RED FAILURES ON UNUSED MONITOR CHANNELS, TIE UNUSED RED MONITOR INPUTS 1,3,7, 8,9,10,11,12,13,14,15 & 16 TO LOAD SWITCH AC+ PER THE MANUFACTURER'S INSTRUCTIONS.
- PROGRAM CONTROLLER TO START UP IN PHASES 2 AND 6 GREEN.
- ENABLE SIMULTANEOUS GAP-OUT FEATURE, ON CONTROLLER UNIT, FOR ALL PHASES.
- THE CABINET AND CONTROLLER ARE PART OF THE GASTONIA CITY SYSTEM.

EQUIPMENT INFORMATION

CONTROLLER.....CONTRACTOR SUPPLIED 2070L
 CABINET.....CONTRACTOR SUPPLIED 332
 SOFTWARE.....ECONOLITE OASIS
 CABINET MOUNT.....BASE
 OUTPUT FILE POSITIONS...12
 LOAD SWITCHES USED.....S2,S4,S5,S6
 PHASES USED.....2,4,5,6
 OVERLAPS.....NONE

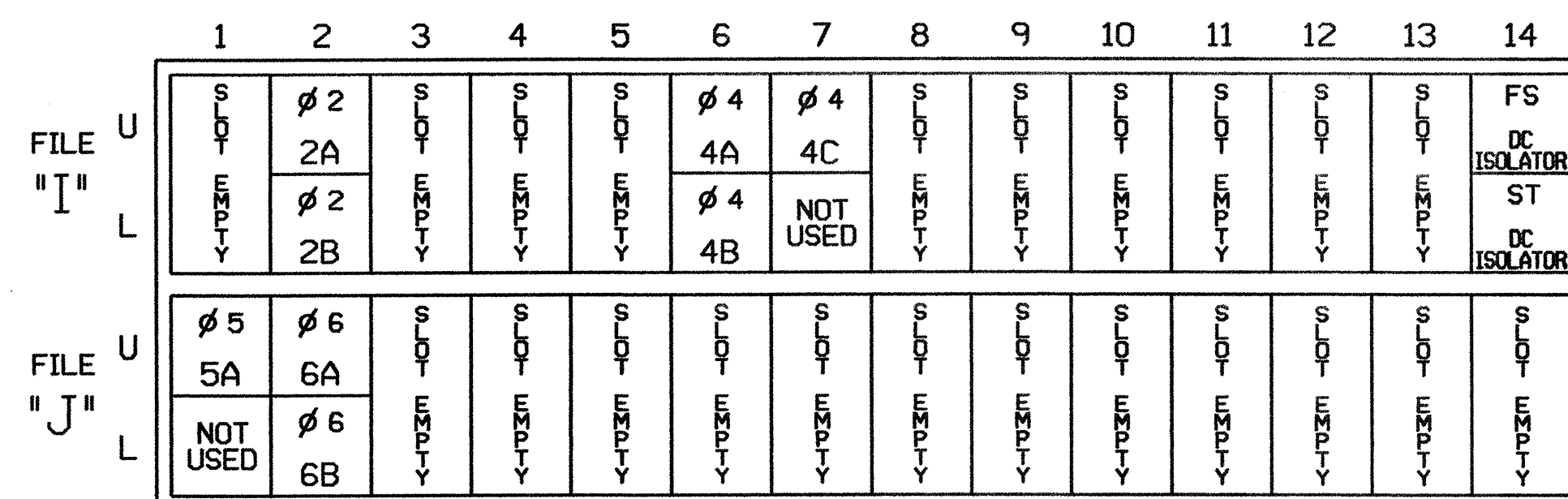
FIELD CONNECTION HOOK-UP CHART

LOAD SWITCH NO.	S1	S2	S2P	S3	S4	S4P	S5	S6	S6P	S7	S8	S8P
PHASE	1	2	2 PED	3	4	4 PED	5	6	6 PED	7	8	8 PED
SIGNAL HEAD NO.	NU	21,22	NU	NU	41, 42,43	NU	51	61,62	63	NU	NU	NU
GREEN		130						136				
YELLOW		129						135				
RED		128						134				
RED ARROW					101		131	134				
YELLOW ARROW					102		132	135				
GREEN ARROW					103		133	136				

NU = NOT USED

INPUT FILE POSITION LAYOUT

(front view)



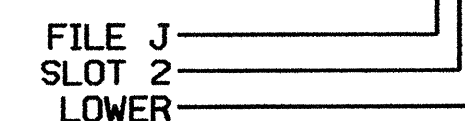
EX. : 1A, 2A, ETC. = LOOP NO.'S

FS = FLASH SENSE
 ST = STOP TIME

INPUT FILE CONNECTION & PROGRAMMING CHART

LOOP NO.	LOOP TERMINAL	INPUT FILE POS.	PIN NO.	INPUT ASSIGNMENT NO.	DETECTOR NO.	NEMA PHASE	CALL	EXTEND	FULL TIME DELAY	STRETCH TIME	DELAY TIME
2A	TB2-5,6	I2U	39	1	2	2	Y	Y		1.8	
2B	TB2-7,8	I2L	43	5	12	2	Y	Y			
4A	TB4-9,10	I6U	41	3	4	4	Y	Y			
4B	TB4-11,12	I6L	45	7	14	4	Y	Y			
4C	TB6-1,2	I7U	65	27	34	4	Y	Y			10
5A	TB3-1,2	J1U	55	17	5	5	Y	Y			3
6A	TB3-5,6	J2U	40	2	6	6	Y	Y		1.8	
6B	TB3-7,8	J2L	44	6	16	6	Y	Y			

INPUT FILE POSITION LEGEND: J2L



THIS ELECTRICAL DETAIL IS FOR THE SIGNAL DESIGN: 12-0194
 DESIGNED: DECEMBER 2004
 SEALED: 01/10/05
 REVISED:

SIGNAL UPGRADE

ELECTRICAL AND PROGRAMMING DETAILS FOR:

I-85 SOUTHBOUND RAMP AT NC 279 (NEW HOPE RD.)

DIVISION 12 GASTON COUNTY GASTONIA

PLAN DATE: DECEMBER 2004 REVIEWED BY: T. J. Jeter

PREPARED BY: JAMES PETERSON REVIEWED BY:

REVISIONS INIT. DATE

122 N. McDowell St., Raleigh, NC 27603

SEAL NORTH CAROLINA PROFESSIONAL ENGINEER SEAL 022013 GEORGE C. BROWN

11-JAN-2005 11:53 U:\2004\12_0194_0006.dgn