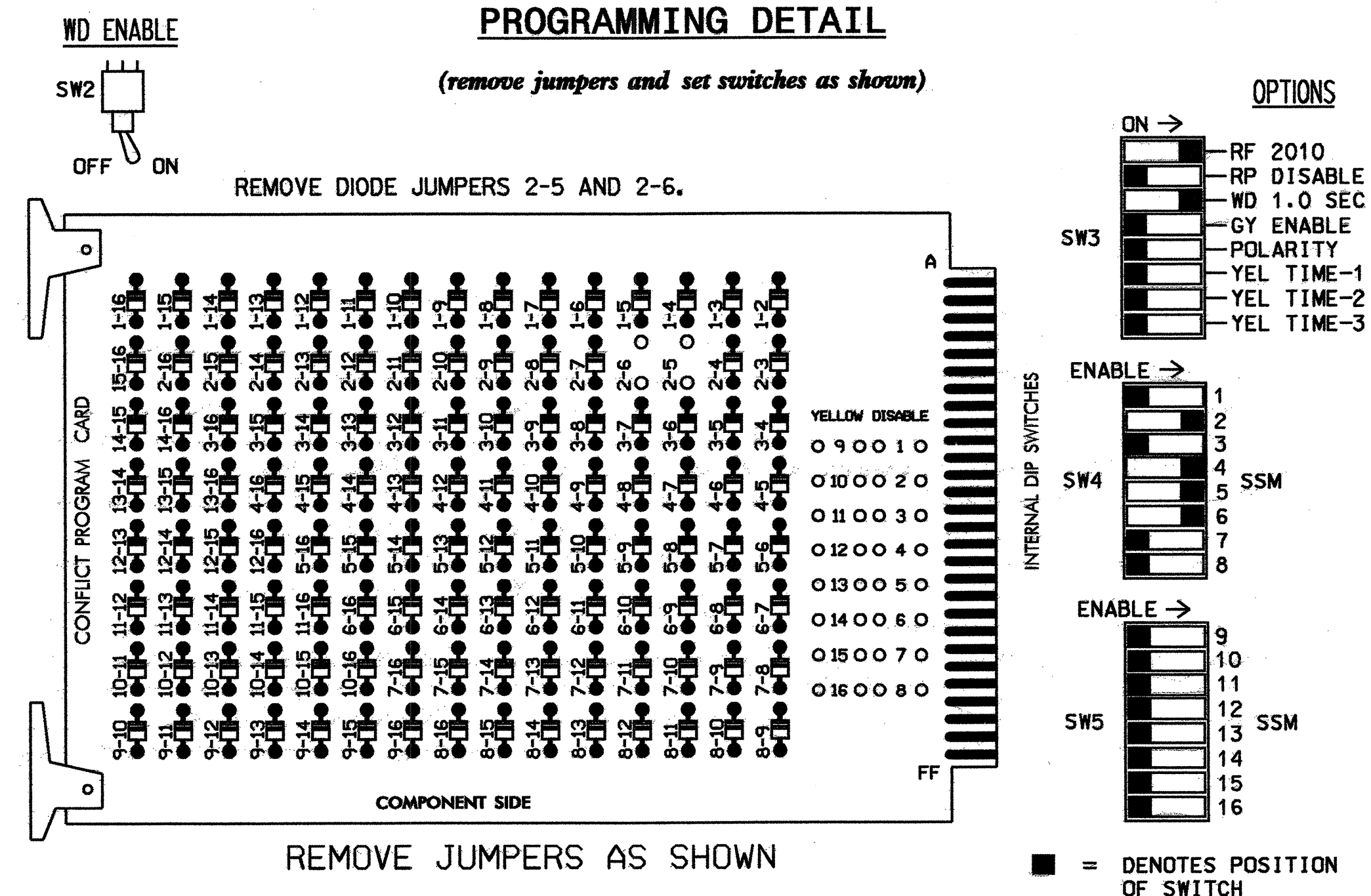


EDI MODEL 2010ECL CONFLICT MONITOR

PROGRAMMING DETAIL



NOTES:

1. Card is provided with all diode jumpers in place. Removal of any jumper allows its channels to run concurrently.
2. Make sure jumpers SEL1-SEL5 are present on the monitor board.

NOTES

1. To prevent "flash-conflict" problems, insert red flash program blocks for all unused vehicle load switches in the output file. The installer shall verify that signal heads flash in accordance with the Signal Plans.
2. Ensure that Red Enable is active at all times during normal operation. To prevent Red Failures on unused monitor channels, tie unused red monitor inputs 1,3,7, 8,9,10,11,12,13,14,15 & 16 to load switch AC+ per the cabinet manufacturer's instructions.
3. Program controller to start up in phases 2 and 6 green.
4. Enable Simultaneous Gap-Out, on the controller unit, for all phases.
5. The cabinet and controller are part of the Gastonia City System.

EQUIPMENT INFORMATION

CONTROLLER.....CONTRACTOR SUPPLIED 2070L
 CABINET.....CONTRACTOR SUPPLIED 332
 SOFTWARE.....ECONOLITE OASIS
 CABINET MOUNT.....BASE
 OUTPUT FILE POSITIONS...12
 LOAD SWITCHES USED.....S2,S4,S5,S6
 PHASES USED.....2,4,5,6
 OVERLAPS.....NONE

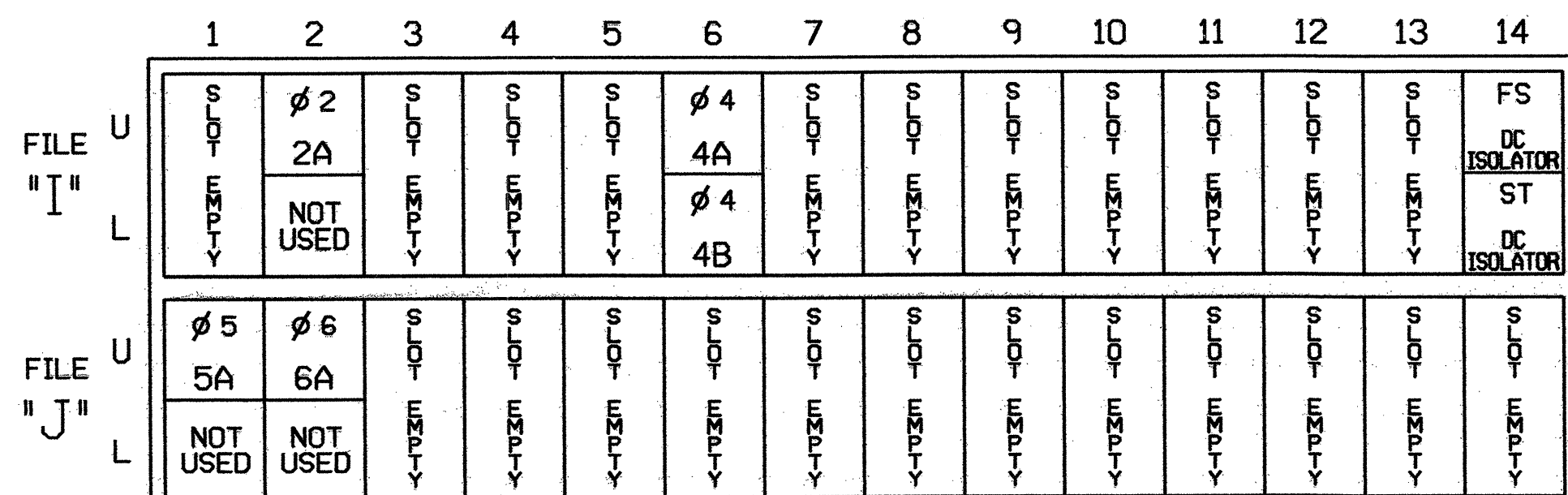
FIELD CONNECTION HOOK-UP CHART

LOAD SWITCH NO.	S1	S2	S2P	S3	S4	S4P	S5	S6	S6P	S7	S8	S8P
PHASE	1	2	2 PED	3	4	4 PED	5	6	6 PED	7	8	8 PED
SIGNAL HEAD NO.	NU	21,22	NU	NU	41, 42,43	NU	21	61,62	NU	NU	NU	NU
GREEN		130			103			136				
YELLOW		129			102			135				
RED		128			101		*	134				
RED ARROW												
YELLOW ARROW							132					
GREEN ARROW							133					

NU = Not Used
 * Denotes install load resistor. See load resistor installation detail this sheet.

INPUT FILE POSITION LAYOUT

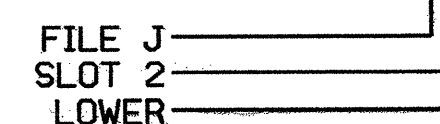
(front view)



INPUT FILE CONNECTION & PROGRAMMING CHART

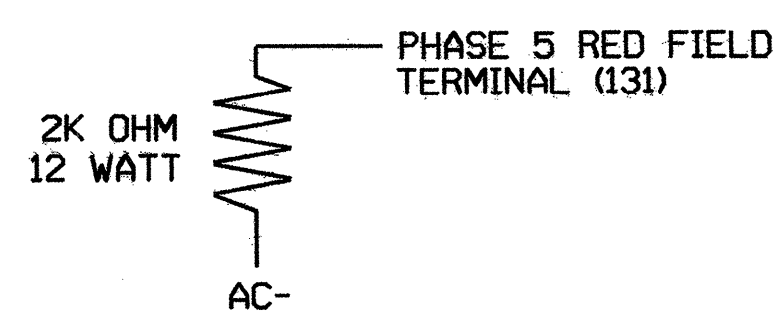
LOOP NO.	LOOP TERMINAL	INPUT FILE POS.	PIN NO.	INPUT ASSIGNMENT NO.	DETECTOR NO.	NEMA PHASE	CALL	EXTEND	FULL TIME DELAY	STRETCH TIME	DELAY TIME
2A	TB2-5,6	I2U	39	1	2	2	Y	Y			
4A	TB4-9,10	I6U	41	3	4	4	Y	Y			
4B	TB4-11,12	I6L	45	7	14	4	Y	Y			10
5A	TB3-1,2	J1U	55	17	5	5	Y	Y			3
6A	TB3-5,6	J2U	40	2	6	6	Y	Y			

INPUT FILE POSITION LEGEND: J2L



THIS ELECTRICAL DETAIL IS FOR THE SIGNAL DESIGN: 12-0902
 DESIGNED: January 2005
 SEALED: 2/8/05
 REVISED:

LOAD RESISTOR INSTALLATION DETAIL



NOTE: The purpose of this resistor is to load the channel red monitor input in order for the Signal Sequence Monitor to use the full signal sequence monitoring capability on channels that do not use the red display in the field.

Signal Upgrade

ELECTRICAL AND PROGRAMMING DETAILS FOR:

SR 2200 (Cox Road) at I-85 SB Ramp

Division 12 Gaston County Gastonia

PLAN DATE: January 2005 REVIEWED BY: T. Joyce

PREPARED BY: William Hairston REVIEWED BY:

REVISIONS: INIT. DATE

Signature: *George C. Brown* 5/13/05

SEAL: NORTH CAROLINA PROFESSIONAL ENGINEER GEORGE C. BROWN 022013

SIG. INVENTORY NO. 12-0902