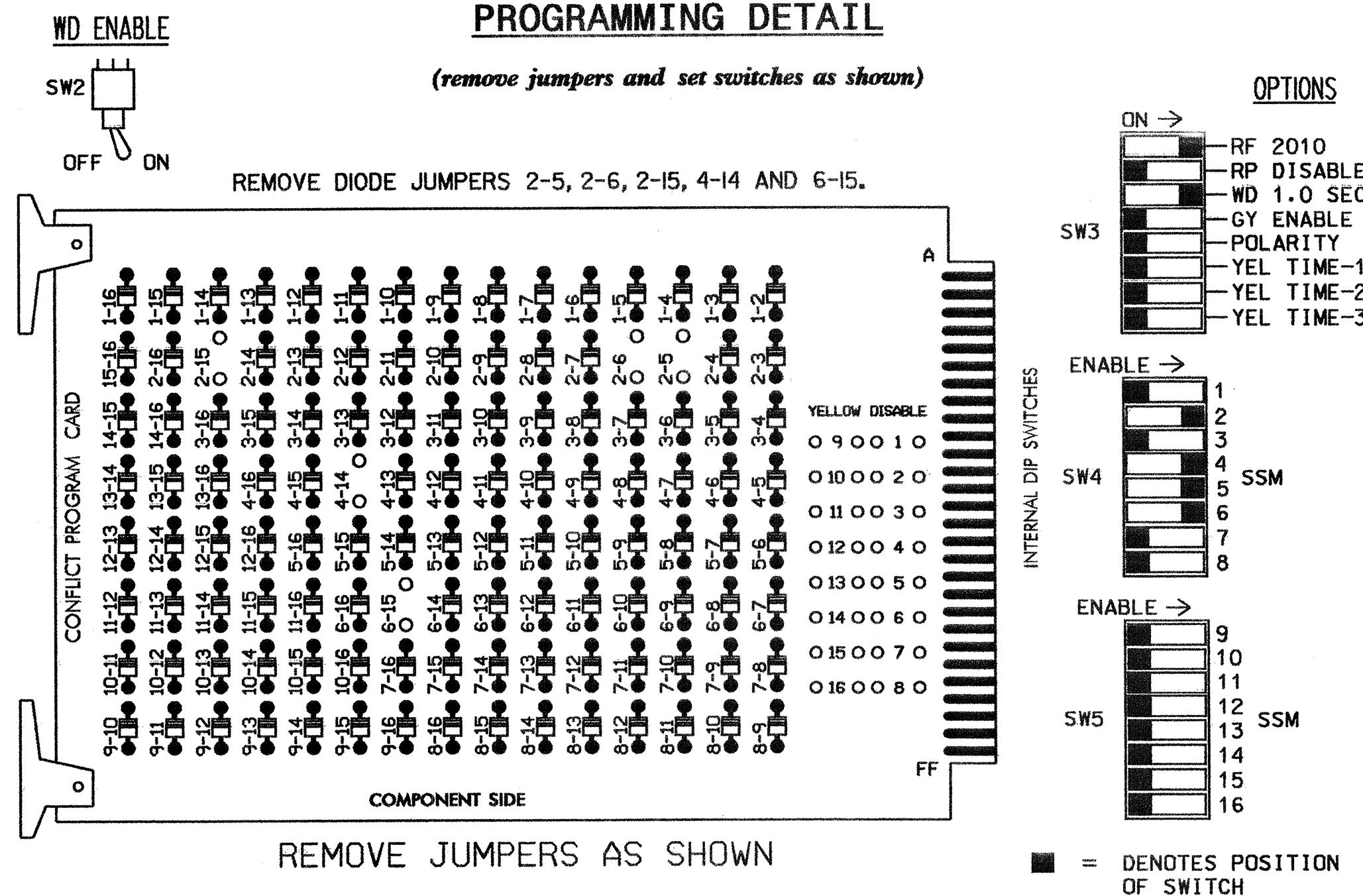


EDI MODEL 2010ECL CONFLICT MONITOR

PROGRAMMING DETAIL



- NOTES:
- Card is provided with all diode jumpers in place. Removal of any jumper allows its channels to run concurrently.
 - Make sure jumpers SEL1-SEL5 are present on the monitor board.

NOTES

- To prevent "flash-conflict" problems, insert red flash program blocks for all unused vehicle load switches in the output file. The installer shall verify that signal heads flash in accordance with the Signal Plans.
- Ensure that Red Enable is active at all times during normal operation. To prevent Red Failures on unused monitor channels, tie unused red monitor inputs 1,3,7,8,9,10,11,12,13,14,15 & 16 to load switch AC+ per the cabinet manufacturer's instructions.
- Program controller to start up in phases 2 and 6 green.
- Enable Simultaneous Gap-Out, on the controller unit, for all phases.
- Program phases 4 and 6 for 'STARTUP PED CALL'.
- The cabinet and controller are part of the Gastonia City System.

FIELD CONNECTION HOOK-UP CHART

LOAD SWITCH NO.	S1	S2	S2P	S3	S4	S4P	S5	S6	S6P	S7	S8	S8P
PHASE	1	2	2 PED	3	4	4 PED	5	6	6 PED	7	8	8 PED
SIGNAL HEAD NO.	NU	21, 22, 23	NU	NU	41, 42	P41, P42, P43, P44	21	61, 62	P61, P62	NU	NU	NU
GREEN		130			103			136				
YELLOW		129			102			135				
RED		128			101		*	134				
RED ARROW												
YELLOW ARROW								132				
GREEN ARROW								133				
								106		121		
								104		119		

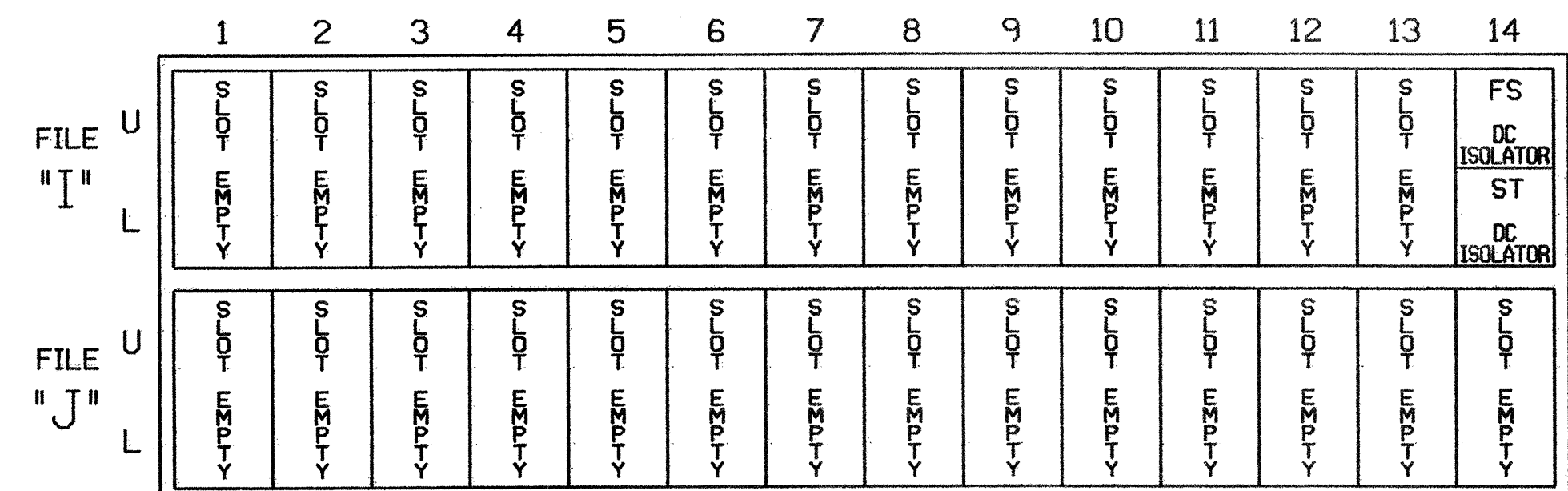
NU = Not Used
 * Denotes install load resistor. See load resistor installation detail this sheet.

EQUIPMENT INFORMATION

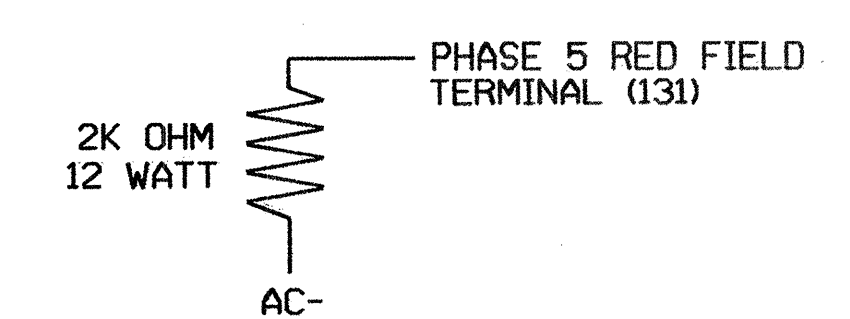
CONTROLLER.....CONTRACTOR SUPPLIED 2070L
 CABINET.....CONTRACTOR SUPPLIED 332
 SOFTWARE.....ECONOLITE OASIS
 CABINET MOUNT.....BASE
 OUTPUT FILE POSITIONS...12
 LOAD SWITCHES USED.....S2,S4,S4P,S5,S6,S6P
 PHASES USED.....2,4,5,6,4 PED,6 PED
 OVERLAPS.....NONE

INPUT FILE POSITION LAYOUT

(front view)



LOAD RESISTOR INSTALLATION DETAIL



NOTE: The purpose of this resistor is to load the channel red monitor input in order for the Signal Sequence Monitor to use the full signal sequence monitoring capability on channels that do not use the red display in the field.

THIS ELECTRICAL DETAIL IS FOR THE SIGNAL DESIGN: 12-0925
 DESIGNED: January 2005
 SEALED: 2/28/05
 REVISED:

Signal Upgrade

ELECTRICAL AND PROGRAMMING DETAILS FOR: US 321 N. (S. York Street) at Long Ave.

Prepared in the Office of:

Division 12 Gaston County Gastonia
 PLAN DATE: February 2005 REVIEWED BY: T. J. M.
 PREPARED BY: William Hairston REVIEWED BY:

REVISIONS: INIT. DATE

222 N. McDowell St., Raleigh, NC 27603

SEAL: NORTH CAROLINA PROFESSIONAL ENGINEER SEAL 022013 GEORGE C. BRUNN

SIG. INVENTORY NO. 12-0925

08-MR-2005 11.10
 U:\120925-2005\sig.182.dgn
 W:\JTB