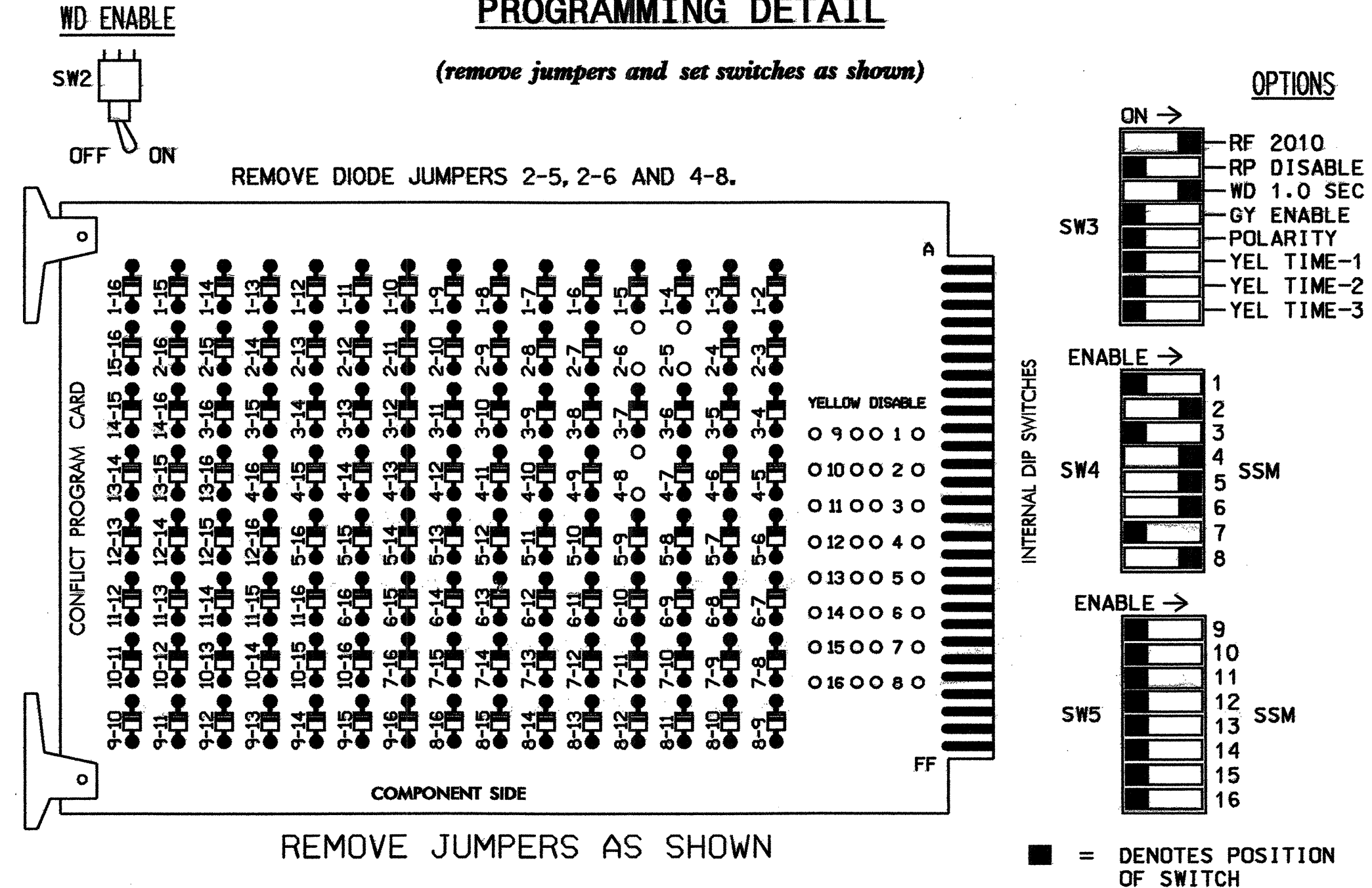


EDI MODEL 2010ECL CONFLICT MONITOR

PROGRAMMING DETAIL



- NOTES:
- CARD IS PROVIDED WITH ALL DIODE JUMPERS IN PLACE. REMOVAL OF ANY JUMPER ALLOWS ITS CHANNELS TO RUN CONCURRENTLY.
 - MAKE SURE JUMPERS SEL1-SEL5 ARE PRESENT ON THE MONITOR BOARD.

NOTES

- TO PREVENT "FLASH-CONFLICT" PROBLEMS, INSERT RED FLASH PROGRAM BLOCKS FOR ALL UNUSED VEHICLE LOAD SWITCHES IN THE OUTPUT FILE. THE INSTALLER SHALL VERIFY THAT SIGNAL HEADS FLASH IN ACCORDANCE WITH THE SIGNAL PLANS.
- ENSURE THAT RED ENABLE IS ACTIVE AT ALL TIMES DURING NORMAL OPERATION. TO PREVENT RED FAILURES ON UNUSED MONITOR CHANNELS, TIE UNUSED RED MONITOR INPUTS 1,3, 7,9,10,11,12,13,14,15 & 16 TO LOAD SWITCH AC+ PER THE CABINET MANUFACTURER'S INSTRUCTIONS.
- PROGRAM CONTROLLER TO START UP IN PHASES 2 AND 6 GREEN.
- ENABLE SIMULTANEOUS GAP-OUT FEATURE, ON CONTROLLER UNIT, FOR ALL PHASES.
- PROGRAM PHASES 4 AND 8, ON CONTROLLER UNIT, FOR DUAL ENTRY.
- THE CABINET AND CONTROLLER ARE PART OF THE GASTONIA CITY SYSTEM.

EQUIPMENT INFORMATION

CONTROLLER.....CONTRACTOR SUPPLIED 2070L CABINET.....CONTRACTOR SUPPLIED 332 SOFTWARE.....ECONOLITE OASIS CABINET MOUNT.....BASE OUTPUT FILE POSITIONS...12 LOAD SWITCHES USED.....S2,S4,S5,S6,S8 PHASES USED.....2,4,5,6,8 OVERLAPS.....NONE

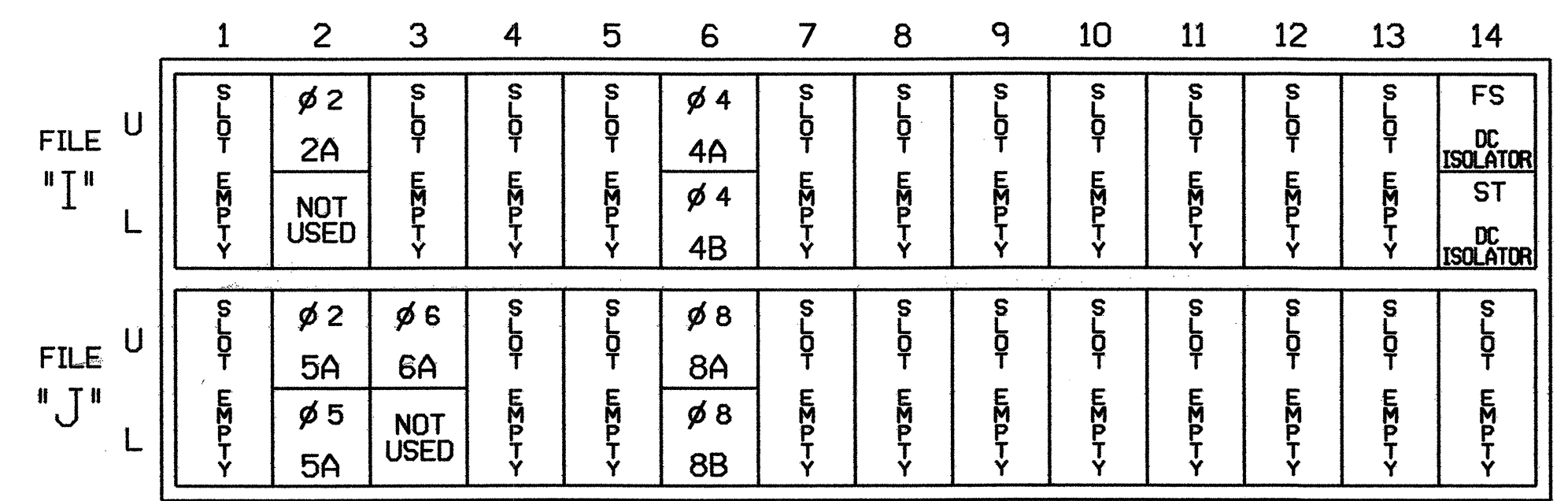
FIELD CONNECTION HOOK-UP CHART

LOAD SWITCH NO.	S1	S2	S2P	S3	S4	S4P	S5	S6	S6P	S7	S8	S8P
PHASE	1	2	2 PED	3	4	4 PED	5	6	6 PED	7	8	8 PED
SIGNAL HEAD NO.	NU	21,22	NU	NU	41,42	NU	21	61,62	NU	NU	81,82	NU
GREEN		130			103			136			109	
YELLOW		129			102			135			108	
RED		128			101		*	134			107	
RED ARROW												
YELLOW ARROW								132				
GREEN ARROW								133				

NU = NOT USED
* DENOTES INSTALL LOAD RESISTOR. SEE LOAD RESISTOR INSTALLATION DETAIL THIS PAGE.

INPUT FILE POSITION LAYOUT

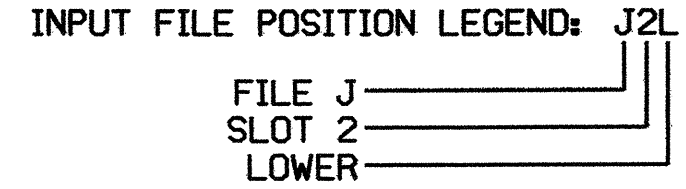
(front view)



INPUT FILE CONNECTION & PROGRAMMING CHART

LOOP NO.	LOOP TERMINAL	INPUT FILE POS.	PIN NO.	INPUT ASSIGNMENT NO.	DETECTOR NO.	NEMA PHASE	CALL	EXTEND	FULL TIME DELAY	STRETCH TIME	DELAY TIME
2A	TB2-5,6	I2U	39	1	2	2	Y	Y			
4A	TB4-9,10	I6U	41	3	4	4	Y	Y			3
4B	TB4-11,12	I6L	45	7	14	4	Y	Y			10
5A ¹	TB3-5,6	J2U	40	2	6	2	Y	Y			
	TB3-7,8	J2L	44	6	16	5	Y	Y			15
6A	TB3-9,10	J3U	64	26	36	6	Y	Y			
8A	TB5-9,10	J6U	42	4	8	8	Y	Y			3
8B	TB5-11,12	J6L	46	8	18	8	Y	Y			10

¹Add jumpers from TB3-5 to TB3-7, and from TB3-6 to TB3-8.



DYNAMIC BACK-UP CONTROL PROGRAMMING

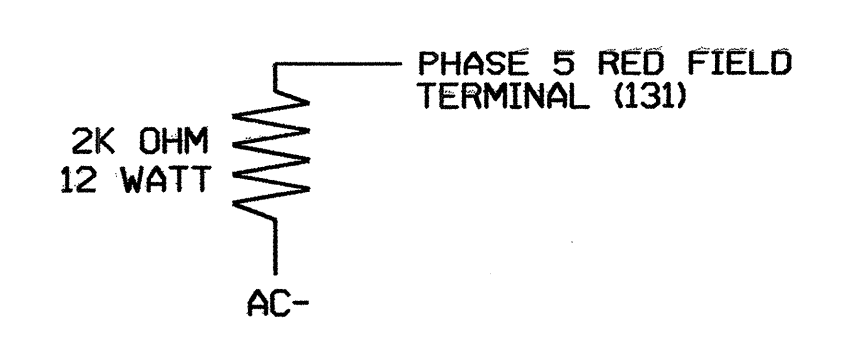
(program controller as shown below)

- From Main Menu press '2' (Phase Control), then '1' (Phase Control Functions). Scroll to the bottom of the menu and enable Dynamic/Backup Control Function 1.
- From Phase Control Functions Menu press '2' (Dynamic/Backup Control Functions).

DYNAMIC/BACKUP CONTROL FUNCTION #01
OVERLAPS: ABCDEFGHIJKLMNPO
IF OVERLAPS ARE ACTIVE :
OR PHASES: 12345678910111213141516
IF PHASES ARE ON: X
OMIT PHASES : X
CALL PHASES : X

BACKUP PROTECTION PROGRAMMING COMPLETE

LOAD RESISTOR INSTALLATION DETAIL



NOTE: THE PURPOSE OF THIS RESISTOR IS TO LOAD THE CHANNEL RED MONITOR INPUT IN ORDER FOR THE SIGNAL SEQUENCE MONITOR TO USE THE FULL SIGNAL SEQUENCE MONITORING CAPABILITY ON CHANNELS THAT DO NOT USE THE RED DISPLAY IN THE FIELD.

THIS ELECTRICAL DETAIL IS FOR THE SIGNAL DESIGN: 12-1282
DESIGNED: JANUARY 2005
SEALED: 1/13/05
REVISED:

SIGNAL UPGRADE

ELECTRICAL AND PROGRAMMING DETAILS FOR:

SR 2200 (COX ROAD) AT ABERDEEN ROAD

Prepared in the Office of: [Logo]

DIVISION 12 GASTON COUNTY GASTONIA

PLAN DATE: JANUARY 2005 REVIEWED BY: T. JOYCE

PREPARED BY: WILLIAM HAIRSTON REVIEWED BY:

REVISIONS

INIT. DATE

SIGNATURE DATE

SEAL NORTH CAROLINA PROFESSIONAL ENGINEER GEORGE C. BROWN

SIG. INVENTORY NO. 12-1282