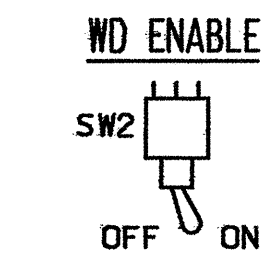


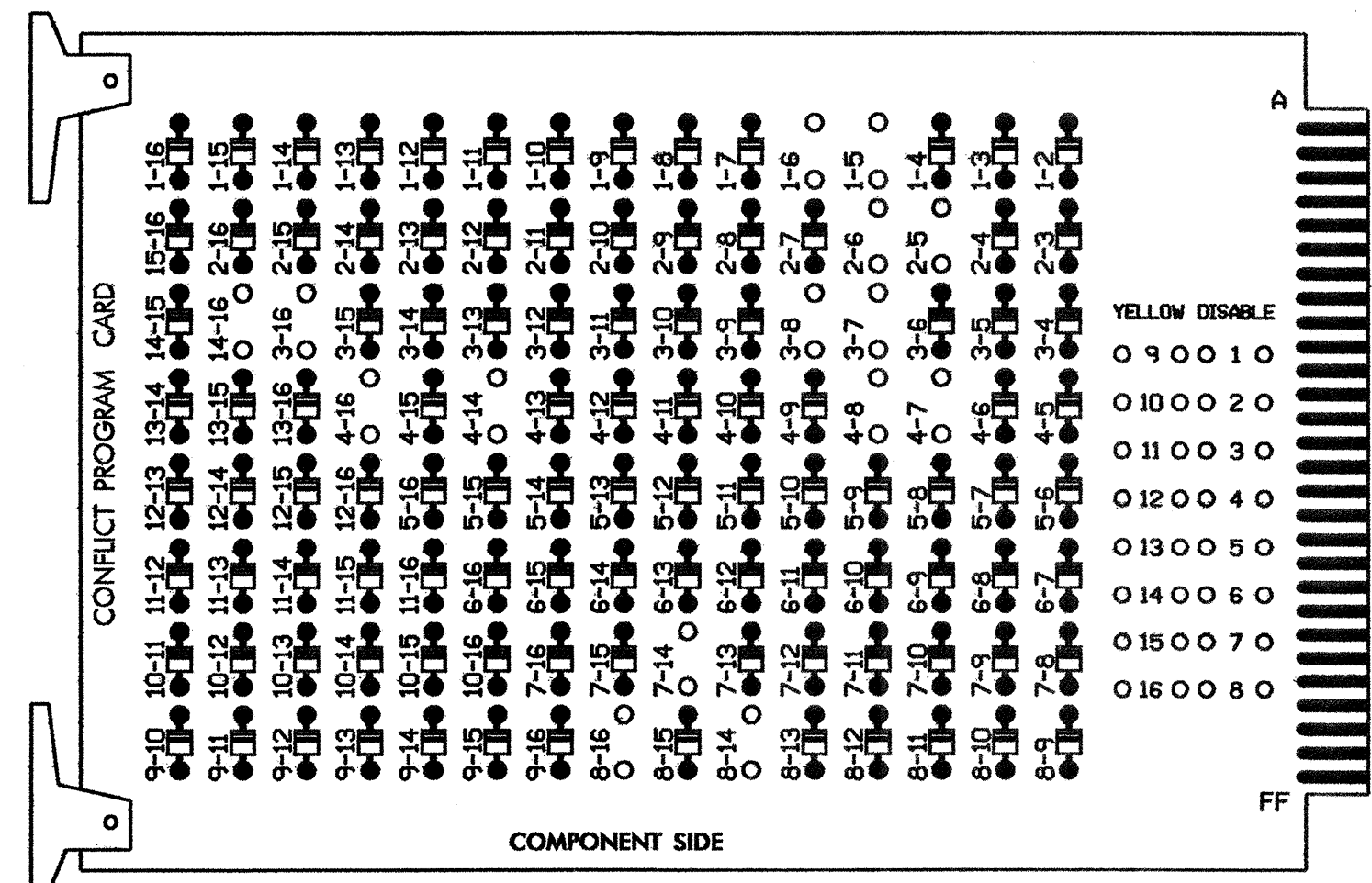
EDI MODEL 2010ECL CONFLICT MONITOR

PROGRAMMING DETAIL

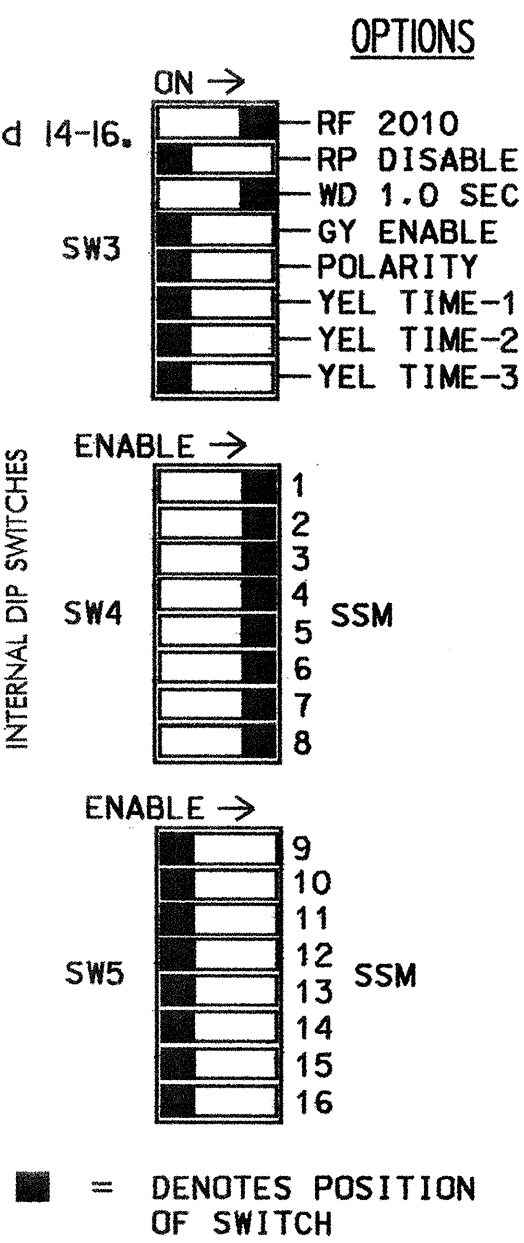
(remove jumpers and set switches as shown)



REMOVE DIODE JUMPERS 1-5,1-6,2-5,2-6,3-7,3-8,3-16,4-7,4-8,4-14,4-16,7-14,8-14,8-16 and 14-16.



REMOVE JUMPERS AS SHOWN



NOTES:

- CARD IS PROVIDED WITH ALL DIODE JUMPERS IN PLACE. REMOVAL OF ANY JUMPER ALLOWS ITS CHANNELS TO RUN CONCURRENTLY.
- MAKE SURE JUMPERS SEL1-SEL5 ARE PRESENT ON THE MONITOR BOARD.

NOTES

- To prevent "flash-conflict" problems, insert red flash program blocks for all unused vehicle load switches in the output file. The installer shall verify that signal heads flash in accordance with the Signal Plans.
- Ensure that Red Enable is active at all times during normal operation. To prevent Red Failures on unused monitor channels, tie unused red monitor inputs 9,10,11,12,13,14,15 and 16 to load switch AC+ per the cabinet manufacturer's instructions.
- Program controller to start up in phases 2 and 6 green.
- Enable Simultaneous Gap-Out, on the controller unit, for all phases.
- Program phases 4 and 8 for 'STARTUP PED CALL'.
- Program phases 2 and 6, on the controller unit, for Variable Initial and Gap Reduction and phases 4 and 8 for Gap Reduction.
- The cabinet and controller are part of the Gastonia City System.

EQUIPMENT INFORMATION

CONTROLLER.....CONTRACTOR SUPPLIED 2070L
 CABINET.....CONTRACTOR SUPPLIED 332
 SOFTWARE.....ECONOLITE OASIS
 CABINET MOUNT.....BASE
 OUTPUT FILE POSITIONS...12
 LOAD SWITCHES USED.....S1,S2,S3,S4,S5,S6,S7,S8,S4P,S8P
 PHASES USED.....1,2,3,4,4PED,5,6,7,8,8PED
 OVERLAPS.....NONE

FIELD CONNECTION HOOK-UP CHART

LOAD SWITCH NO.	S1	S2	S2P	S3	S4	S4P	S5	S6	S6P	S7	S8	S8P
PHASE	1	2	2 PED	3	4	4 PED	5	6	6 PED	7	8	8 PED
SIGNAL HEAD NO.	11	21,22	NU	31	41,42	P41, P42	51	61,62	NU	71	81,82	P81, P82
GREEN		130			103			136				109
YELLOW		129			102			135				108
RED		128			101			134				107
RED ARROW	125			116			131			122		
YELLOW ARROW	126			117			132			123		
GREEN ARROW	127			118			133			124		
						106						112
						104						110

NU = Not Used

INPUT FILE POSITION LAYOUT

(front view)

FILE "I"	1	2	3	4	5	6	7	8	9	10	11	12	13	14
U	∅ 1	∅ 2	∅ 3	∅ 4	∅ 4	∅ 4	∅ 4	∅ 4	∅ 4	∅ 4	∅ 4	∅ 4	∅ 4	∅ 4
L	1A	2A,2B	3A	4A,4B	4C	4D	4E	4F	4G	4H	4I	4J	4K	4L
U	∅ 5	∅ 6	∅ 7	∅ 8	∅ 8	∅ 8	∅ 8	∅ 8	∅ 8	∅ 8	∅ 8	∅ 8	∅ 8	∅ 8
L	5A	6A,6B	7A	8A,8B	8C	8D	8E	8F	8G	8H	8I	8J	8K	8L

EX. : 1A, 2A, ETC. = LOOP NO.'S

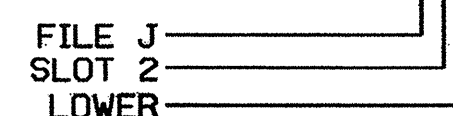
FS = FLASH SENSE
 ST = STOP TIME

INPUT FILE CONNECTION & PROGRAMMING CHART

LOOP NO.	LOOP TERMINAL	INPUT FILE POS.	PIN NO.	INPUT ASSIGNMENT NO.	DETECTOR NO.	NEMA PHASE	CALL	EXTEND	FULL TIME DELAY	STRETCH TIME	DELAY TIME
1A	TB2-1,2	I1U	56	18	1	1	Y	Y			
2A,2B	TB2-5,6	I2U	39	1	2	2	Y	Y			
3A	TB4-5,6	I5U	58	20	3	3	Y	Y			
4A,4B	TB4-9,10	I6U	41	3	4	4	Y	Y			
4C	TB6-1,2	I7U	65	27	34	4	Y	Y	Y	2	5
4D	TB6-3,4	I7L	78	40	44	4	Y	Y	Y	2	5
5A	TB3-1,2	J1U	55	17	5	5	Y	Y			
6A,6B	TB3-5,6	J2U	40	2	6	6	Y	Y			
7A	TB5-5,6	J5U	57	19	7	7	Y	Y			
8A,8B	TB5-9,10	J6U	42	4	8	8	Y	Y			
8C	TB7-1,2	J7U	66	28	38	8	Y	Y	Y	2	5
8D	TB7-3,4	J7L	79	41	48	8	Y	Y	Y	2	5
8E	TB7-5,6	J8U	50	12	28	8	Y	Y			15
PED PUSH BUTTONS											
P41,P42	TB8-5,6	I12L	69	31	PED 4	4 PED					
P81,P82	TB8-8,9	I13L	70	32	PED 8	8 PED					

NOTE:
 INSTALL DC ISOLATORS IN INPUT FILE SLOTS 112 AND 113.

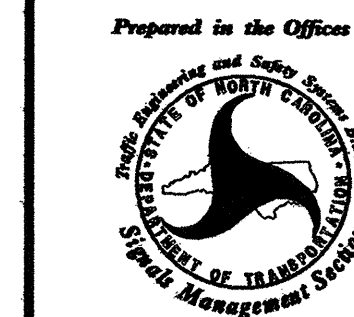
INPUT FILE POSITION LEGEND: J2L



THIS ELECTRICAL DETAIL IS FOR THE SIGNAL DESIGN# 12-1605
 DESIGNED: February 2005
 SEALED: 2-17-05
 REVISED: N/A

Signal Upgrade

ELECTRICAL AND PROGRAMMING DETAILS FOR:



Gaston Day School Rd.
 at
SR 1255 (Hudson Boulevard)

Division 12 Gaston County Gastonia

PLAN DATE: 2-10-05 REVIEWED BY: D.T. Joyce DJJ

PREPARED BY: D.H. Spaulding REVIEWED BY:

REVISIONS: _____ INIT. DATE

SIGNATURE: *D.H. Spaulding* DATE: _____

SIG. INVENTORY NO. 12-1605