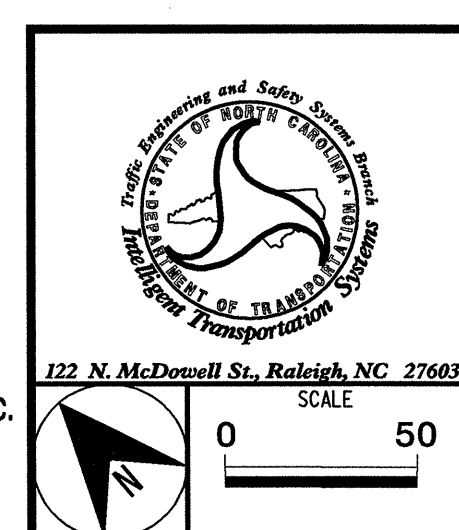


17	INSTALL CABLE(S) IN EXISTING CONDUIT	34	INSTALL CABLE STORAGE RACKS (SNOW SHOES) AND STORE 500 FEET OF GASTONIA ELECTRIC CABLE	68	INSTALL UNI-DIRECTIONAL YAGI ANTENNA
18	INSTALL CABLE(S) IN NEW CONDUIT	35	REMOVE EXISTING CABLE STORAGE RACKS (SNOW SHOES) AND STORE 500 FEET OF GASTONIA ELECTRIC CABLE	69	INSTALL OMNI-DIRECTIONAL ANTENNA
19	INSTALL CABLE(S) IN EXISTING RISER	36	INSTALL CCTV CAMERA ASSEMBLY	70	INSTALL RADIO TRANSCIVER
20	INSTALL CABLE(S) IN NEW RISER	37	INSTALL CCTV CAMERA WOOD POLE	71	REPLACE EXISTING WEATHERHEAD WITH HEAT SHRINK TUBING
21	INSTALL CABLE(S) IN EXISTING CONDUIT STUBOUTS	38	INSTALL CCTV CAMERA METAL POLE AND FOUNDATION	72	INSTALL NEW 332 BASE MOUNTED CABINET
22	INSTALL NEW CONDUIT INTO EXISTING CABINET BASE (USE EXISTING CONDUIT STUB-OUTS WHEN AVAILABLE)	39	INSTALL JUNCTION BOX	73	INSTALL NEW 336S POLE MOUNTED CABINET
23	INSTALL NEW RISER INTO EXISTING CABINET BASE (USE EXISTING CONDUIT STUB-OUTS WHEN AVAILABLE)	40	INSTALL OVERSIZED JUNCTION BOX	74	INSTALL TERMINAL SPLICE BOX
24	INSTALL NEW CONDUIT INTO EXISTING POLE MOUNTED CABINET	41	REMOVE EXISTING JUNCTION BOX	75	INSTALL GASTONIA ELECTRIC AERIAL SPLICE ENCLOSURE
25	INSTALL NEW RISER INTO EXISTING POLE MOUNTED CABINET	42	INSTALL WOOD POLE	76	INSTALL GASTONIA ELECTRIC UNDERGROUND SPLICE ENCLOSURE
26	TERMINATE COMMUNICATIONS CABLE ON EXISTING TELEMETRY INTERFACE PANEL IN TRAFFIC SIGNAL CONTROLLER CABINET	43	REMOVE EXISTING WOOD POLE		
27	INSTALL NEW TELEMETRY INTERFACE PANEL IN TRAFFIC SIGNAL CONTROLLER CABINET	44	INSTALL AERIAL GUY ASSEMBLY		
28	INSTALL INTERCONNECT CENTER, PATCH PANEL, JUMPERS, AND FUSION SPLICE CABLE IN CABINET	45	INSTALL STANDARD GUY ASSEMBLY		
29	INSTALL UNDERGROUND SPLICE ENCLOSURE	46	INSTALL SIDEWALK GUY ASSEMBLY		
30	INSTALL AERIAL SPLICE ENCLOSURE	47	INSTALL MESSENGER CABLE		
31	INSTALL POLE MOUNTED SPLICE CABINET	48	REMOVE EXISTING COMMUNICATIONS CABLE AND MESSENGER CABLE		
32	INSTALL BASE MOUNTED SPLICE CABINET	49	REMOVE EXISTING COMMUNICATIONS CABLE		
33	REMOVE EXISTING SPLICE CABINET	50	INSTALL TELEPHONE SERVICE		
		51	INSTALL CABLE STORAGE RACKS (SNOW SHOES) AND STORE 100 FEET OF SIGNAL SYSTEM CABLE		
				51A	INSTALL CABLE STORAGE RACKS (SNOW SHOES) AND STORE 500 FEET OF GASTONIA ELECTRIC CABLE
				52	INSTALL FIBER OPTIC DELINEATOR MARKER
				53	STORE 20 FEET OF COMMUNICATIONS CABLE
				54	LASH CABLE(S) TO EXISTING SIGNAL/COMMUNICATIONS CABLE
				55	LASH CABLE(S) TO EXISTING MESSENGER CABLE
				56	LASH CABLE(S) TO NEW MESSENGER CABLE
				57	MODIFY EXISTING ELECTRICAL SERVICE
				58	INSTALL NEW ELECTRICAL SERVICE
				59	INSTALL VIDEO OPTIC TRANSMITTER WITH DATA
				60	INSTALL FIBER OPTIC TRANSCIVER
				61	REMOVE EXISTING CONTROLLER AND CABINET
				62	INSTALL NEW CONTROLLER
				63	INSTALL SPECIAL JUNCTION BOX
				64	INSTALL SYSTEM LOOP
				65	INSTALL SYSTEM LOOP AMPLIFIER
				66	INSTALL SYSTEM LOOP LEAD-IN CABLE
				67	MODIFY EXISTING CABINET FOUNDATION

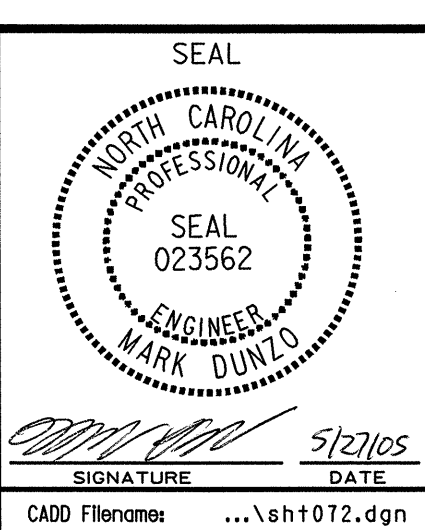
ALL NCDOT ATTACHMENT POINTS ARE 40" BELOW POWER, FRONT SIDE OF POLE, UNLESS OTHERWISE NOTED.

PLANS PREPARED IN THE OFFICE OF:

 Kimley-Horn and Associates, Inc.
 P.O. Box 33068
 Raleigh, N.C. 27636-3068
 (919) 677-2000



CITY OF GASTONIA COMPUTERIZED SIGNAL SYSTEM UPGRADE CABLE ROUTING PLANS	
DIVISION 12	GASTON COUNTY
PLAN DATE: MAY 26, 2005	REVIEWED BY: I.Z. VANOSDELL
PREPARED BY: J.C. CROSS	REVIEWED BY: M.W. DUNZO
REVISIONS	INIT. DATE



05/26/2005 T:\systems\proj\101036097\gastonia\sh072.dgn