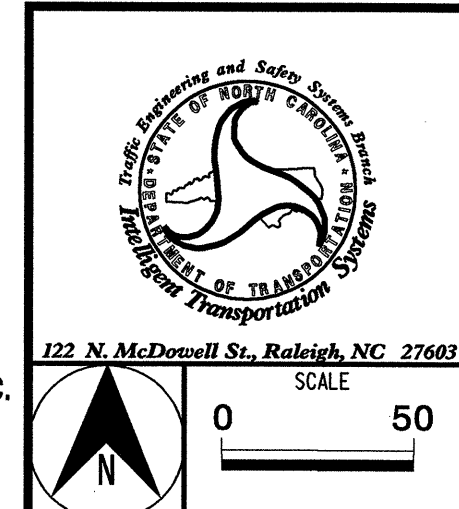


1. INSTALL REA, PE - 22, SHIELDED, TWISTED PAIR COMMUNICATIONS CABLE	17. INSTALL CABLE(S) IN EXISTING CONDUIT	34. INSTALL CABLE STORAGE RACKS (SNOW SHOES) AND STORE 500 FEET OF GASTONIA ELECTRIC CABLE	51A. INSTALL CABLE STORAGE RACKS (SNOW SHOES) AND STORE 100 FEET OF SIGNAL SYSTEM CABLE	68. INSTALL UNI-DIRECTIONAL YAGI ANTENNA
2. INSTALL REA, PE - 38, (FIGURE - 8) SHIELDED, TWISTED PAIR COMMUNICATIONS CABLE	18. INSTALL CABLE(S) IN NEW CONDUIT	35. REMOVE EXISTING CABINET FOUNDATION	52. INSTALL FIBER OPTIC DELINEATOR MARKER	69. INSTALL OMNI-DIRECTIONAL ANTENNA
3. INSTALL REA, PE - 39, (UNDERGROUND) SHIELDED, TWISTED PAIR COMMUNICATIONS CABLE	19. INSTALL CABLE(S) IN EXISTING RISER	36. INSTALL CCTV CAMERA ASSEMBLY	53. STORE 20 FEET OF COMMUNICATIONS CABLE	70. INSTALL RADIO TRANSCEIVER
4. INSTALL SMPD CABLE	20. INSTALL CABLE(S) IN NEW RISER	37. INSTALL CCTV CAMERA WOOD POLE	54. LASH CABLE(S) TO EXISTING SIGNAL/COMMUNICATIONS CABLE	71. REPLACE EXISTING WEATHERHEAD WITH HEAT SHRINK TUBING
5. INSTALL GASTONIA ELECTRIC CABLE	21. INSTALL CABLE(S) IN EXISTING CONDUIT STUBOUTS	38. INSTALL CCTV CAMERA METAL POLE AND FOUNDATION	55. LASH CABLE(S) TO EXISTING MESSENGER CABLE	72. INSTALL NEW 332 BASE MOUNTED CABINET
6. INSTALL MMFO CABLE	22. INSTALL NEW CONDUIT INTO EXISTING CABINET BASE (USE EXISTING CONDUIT STUB-OUTS WHEN AVAILABLE)	39. INSTALL JUNCTION BOX	56. LASH CABLE(S) TO NEW MESSENGER CABLE	73. INSTALL NEW 336S POLE MOUNTED CABINET
7. INSTALL FIBER OPTIC DROP CABLE	23. INSTALL NEW RISER INTO EXISTING CABINET BASE (USE EXISTING CONDUIT STUB-OUTS WHEN AVAILABLE)	40. INSTALL OVERSIZED JUNCTION BOX	57. MODIFY EXISTING ELECTRICAL SERVICE	74. INSTALL TERMINAL SPICE BOX
8. INSTALL TRACER WIRE	24. INSTALL NEW CONDUIT INTO EXISTING POLE MOUNTED CABINET	41. REMOVE EXISTING JUNCTION BOX	58. INSTALL NEW ELECTRICAL SERVICE	75. INSTALL GASTONIA ELECTRIC AERIAL SPICE ENCLOSURE
9. TRENCH	25. INSTALL NEW RISER INTO EXISTING POLE MOUNTED CABINET	42. INSTALL WOOD POLE	59. INSTALL VIDEO OPTIC TRANSMITTER WITH DATA	76. INSTALL GASTONIA ELECTRIC UNDERGROUND SPICE ENCLOSURE
10. INSTALL PVC CONDUIT	26. TERMINATE COMMUNICATIONS CABLE ON EXISTING TELEMETRY INTERFACE PANEL IN TRAFFIC SIGNAL CONTROLLER CABINET	43. REMOVE EXISTING WOOD POLE	60. INSTALL FIBER OPTIC TRANSCEIVER	
11. INSTALL RIGID, GALVANIZED STEEL CONDUIT	27. INSTALL NEW TELEMETRY INTERFACE PANEL IN TRAFFIC SIGNAL CONTROLLER CABINET	44. INSTALL AERIAL GUY ASSEMBLY	61. REMOVE EXISTING CONTROLLER AND CABINET	
12. INSTALL RIGID, GALVANIZED STEEL RISER WITH WEATHERHEAD	28. INSTALL INTERCONNECT CENTER, PATCH PANEL, JUMPERS, AND FUSION SPICE CABLE IN CABINET	45. INSTALL STANDARD GUY ASSEMBLY	62. INSTALL NEW CONTROLLER	
13. INSTALL RIGID, GALVANIZED STEEL RISER WITH HEAT SHRINK TUBING	29. INSTALL UNDERGROUND SPICE ENCLOSURE	46. INSTALL SIDEWALK GUY ASSEMBLY	63. INSTALL SPECIAL JUNCTION BOX	
14. INSTALL OUTER-DUCT POLYETHYLENE CONDUIT	30. INSTALL AERIAL SPICE ENCLOSURE	47. INSTALL MESSENGER CABLE	64. INSTALL SYSTEM LOOP	
15. INSTALL POLYETHYLENE CONDUIT	31. INSTALL POLE MOUNTED SPICE CABINET	48. REMOVE EXISTING COMMUNICATIONS CABLE AND MESSENGER CABLE	65. INSTALL SYSTEM LOOP AMPLIFIER	
16. DIRECTIONAL DRILL CONDUIT	32. INSTALL BASE MOUNTED SPICE CABINET	49. REMOVE EXISTING COMMUNICATIONS CABLE	66. INSTALL SYSTEM LOOP LEAD-IN CABLE	
17. BORE AND JACK CONDUIT	33. REMOVE EXISTING SPICE CABINET	50. INSTALL TELEPHONE SERVICE	67. MODIFY EXISTING CABINET FOUNDATION	

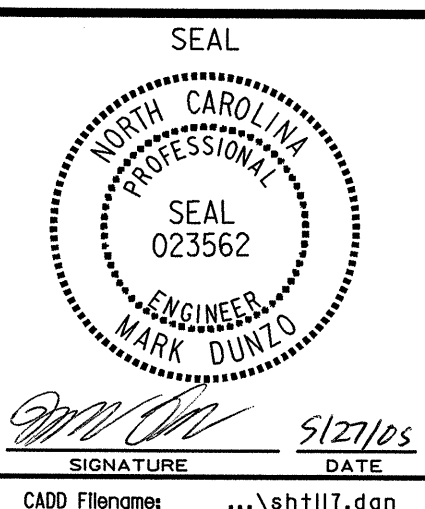
ALL NCDOT ATTACHMENT POINTS ARE 40" BELOW POWER, FRONT SIDE OF POLE, UNLESS OTHERWISE NOTED.

NOTE:
1. CREATE LINE OF SIGHT BASED WIRELESS LINK WITH INTERSECTION CITY-10.

PLANS PREPARED IN THE OFFICE OF:
Kimley-Horn and Associates, Inc.
P.O. Box 33068
Raleigh, N.C. 27636-3068
(919) 677-2000



CITY OF GASTONIA COMPUTERIZED SIGNAL SYSTEM UPGRADE CABLE ROUTING PLANS	
DIVISION 12	GASTON COUNTY
PLAN DATE: MAY 26, 2005	REVIEWED BY: I.Z. VANOSDELL
PREPARED BY: J.C. CROSS	REVIEWED BY: M.W. DUNZO
REVISIONS	INIT. DATE



05/27/2005 r:\systems\proj\jects\01036097\gastonia\shf117.dgn