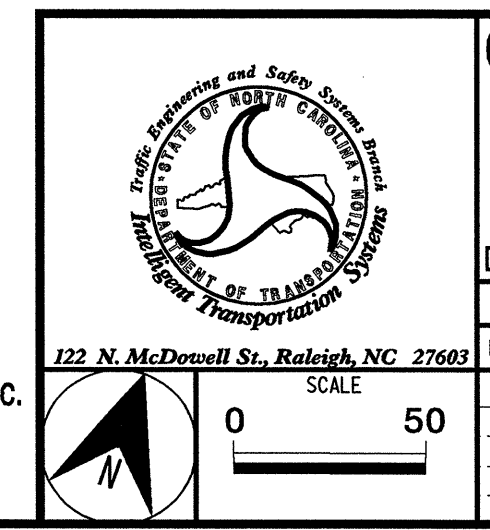


- | | | | | |
|---|--|---|--|--|
| <ul style="list-style-type: none"> 1. INSTALL REA, PE - 22, SHIELDED, TWISTED PAIR COMMUNICATIONS CABLE 2. INSTALL REA, PE - 38, (FIGURE - 8) SHIELDED, TWISTED PAIR COMMUNICATIONS CABLE 3. INSTALL REA, PE - 39, (UNDERGROUND) SHIELDED, TWISTED PAIR COMMUNICATIONS CABLE 4. INSTALL SMFO CABLE 5. INSTALL GASTONIA ELECTRIC CABLE 6. INSTALL MMFO CABLE 7. INSTALL FIBER OPTIC DROP CABLE 8. INSTALL TRACER WIRE 9. TRENCH 10. INSTALL PVC CONDUIT 11. INSTALL RIGID, GALVANIZED STEEL CONDUIT 12. INSTALL RIGID, GALVANIZED STEEL RISER WITH WEATHERHEAD 13. INSTALL RIGID, GALVANIZED STEEL RISER WITH HEAT SHRINK TUBING 14. INSTALL OUTER-DUCT POLYETHYLENE CONDUIT 15. INSTALL POLYETHYLENE CONDUIT 16. DIRECTIONAL DRILL CONDUIT 17. BORE AND JACK CONDUIT | <ul style="list-style-type: none"> 17. INSTALL CABLE(S) IN EXISTING CONDUIT 18. INSTALL CABLE(S) IN NEW CONDUIT 19. INSTALL CABLE(S) IN EXISTING RISER 20. INSTALL CABLE(S) IN NEW RISER 21. INSTALL CABLE(S) IN EXISTING CONDUIT STUBOUTS 22. INSTALL NEW CONDUIT INTO EXISTING CABINET BASE (USE EXISTING CONDUIT STUB-OUTS WHEN AVAILABLE) 23. INSTALL NEW RISER INTO EXISTING CABINET BASE (USE EXISTING CONDUIT STUB-OUTS WHEN AVAILABLE) 24. INSTALL NEW CONDUIT INTO EXISTING POLE MOUNTED CABINET 25. INSTALL NEW RISER INTO EXISTING POLE MOUNTED CABINET 26. TERMINATE COMMUNICATIONS CABLE ON EXISTING TELEMETRY INTERFACE PANEL IN TRAFFIC SIGNAL CONTROLLER CABINET 27. INSTALL NEW TELEMETRY INTERFACE PANEL IN TRAFFIC SIGNAL CONTROLLER CABINET 28. INSTALL INTERCONNECT CENTER, PATCH PANEL, JUMPERS, AND FUSION SPLICE CABLE IN CABINET 29. INSTALL UNDERGROUND SPLICE ENCLOSURE 30. INSTALL AERIAL SPLICE ENCLOSURE 31. INSTALL POLE MOUNTED SPLICE CABINET 32. INSTALL BASE MOUNTED SPLICE CABINET 33. REMOVE EXISTING SPLICE CABINET | <ul style="list-style-type: none"> 34. INSTALL CABINET FOUNDATION 35. REMOVE EXISTING CABINET FOUNDATION 36. INSTALL CCTV CAMERA ASSEMBLY 37. INSTALL CCTV CAMERA WOOD POLE 38. INSTALL CCTV CAMERA METAL POLE AND FOUNDATION 39. INSTALL JUNCTION BOX 40. INSTALL OVERSIZED JUNCTION BOX 41. REMOVE EXISTING JUNCTION BOX 42. INSTALL WOOD POLE 43. REMOVE EXISTING WOOD POLE 44. INSTALL AERIAL GUY ASSEMBLY 45. INSTALL STANDARD GUY ASSEMBLY 46. INSTALL SIDEWALK GUY ASSEMBLY 47. INSTALL MESSENGER CABLE 48. REMOVE EXISTING COMMUNICATIONS CABLE AND MESSENGER CABLE 49. REMOVE EXISTING COMMUNICATIONS CABLE 50. INSTALL TELEPHONE SERVICE 51. INSTALL CABLE STORAGE RACKS (SNOW SHOES) AND STORE 100 FEET OF SIGNAL SYSTEM CABLE | <ul style="list-style-type: none"> 51A. INSTALL CABLE STORAGE RACKS (SNOW SHOES) AND STORE 500 FEET OF GASTONIA ELECTRIC CABLE 52. INSTALL FIBER OPTIC DELINEATOR MARKER 53. STORE 20 FEET OF COMMUNICATIONS CABLE 54. LASH CABLE(S) TO EXISTING SIGNAL/COMMUNICATIONS CABLE 55. LASH CABLE(S) TO EXISTING MESSENGER CABLE 56. LASH CABLE(S) TO NEW MESSENGER CABLE 57. MODIFY EXISTING ELECTRICAL SERVICE 58. INSTALL NEW ELECTRICAL SERVICE 59. INSTALL VIDEO OPTIC TRANSMITTER WITH DATA 60. INSTALL FIBER OPTIC TRANSCEIVER 61. REMOVE EXISTING CONTROLLER AND CABINET 62. INSTALL NEW CONTROLLER 63. INSTALL SPECIAL JUNCTION BOX 64. INSTALL SYSTEM LOOP 65. INSTALL SYSTEM LOOP AMPLIFIER 66. INSTALL SYSTEM LOOP LEAD-IN CABLE 67. MODIFY EXISTING CABINET FOUNDATION | <ul style="list-style-type: none"> 68. INSTALL UNI-DIRECTIONAL YAGI ANTENNA 69. INSTALL OMNI-DIRECTIONAL ANTENNA 70. INSTALL RADIO TRANSCEIVER 71. REPLACE EXISTING WEATHERHEAD WITH HEAT SHRINK TUBING 72. INSTALL NEW 332 BASE MOUNTED CABINET 73. INSTALL NEW 336S POLE MOUNTED CABINET 74. INSTALL TERMINAL SPLICE BOX 75. INSTALL GASTONIA ELECTRIC AERIAL SPLICE ENCLOSURE 76. INSTALL GASTONIA ELECTRIC UNDERGROUND SPLICE ENCLOSURE |
|---|--|---|--|--|

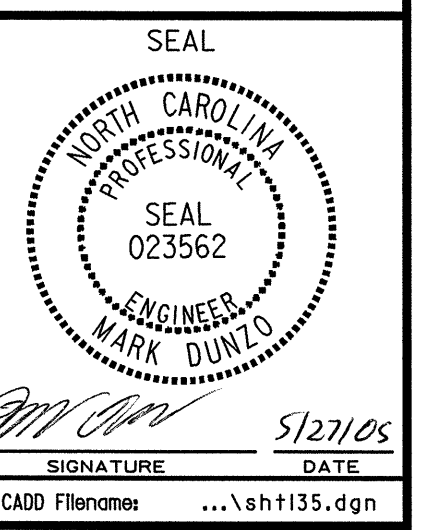
ALL NCDOT ATTACHMENT POINTS ARE 40" BELOW POWER, FRONT SIDE OF POLE, UNLESS OTHERWISE NOTED.

PLANS PREPARED IN THE OFFICE OF:

 Kimley-Horn and Associates, Inc.
 P.O. Box 33068
 Raleigh, NC 27636-3068
 (919) 677-2000



CITY OF GASTONIA COMPUTERIZED SIGNAL SYSTEM UPGRADE CABLE ROUTING PLANS	
DIVISION 12	GASTON COUNTY
PLAN DATE: MAY 26, 2005	REVIEWED BY: I.Z. VANOSDELL
PREPARED BY: J.C. CROSS	REVIEWED BY: M.W. DUNZO
REVISIONS	INIT. DATE



05/26/2005 f:\systems\proj\rects\01036097(gastonia)\sh135.dgn