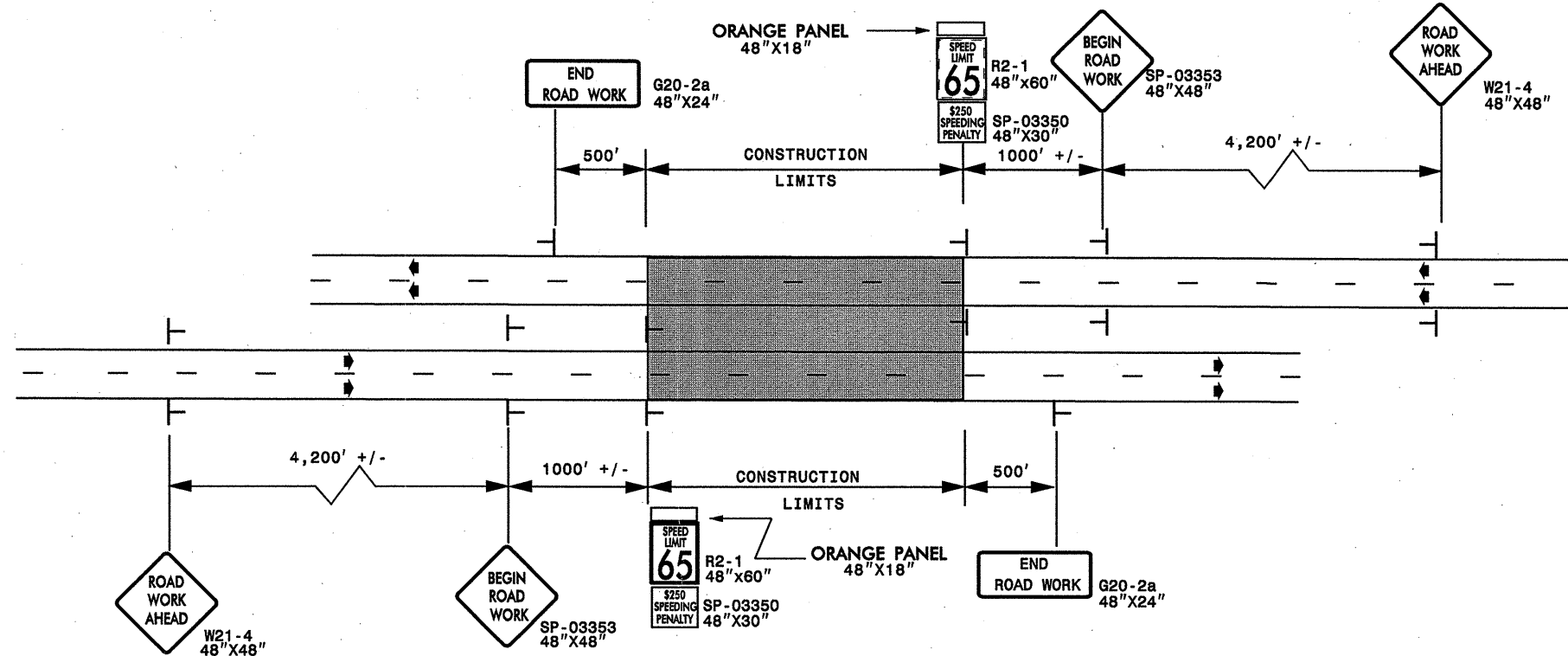


ADVANCED WORK ZONE WARNING SIGNING FOR FREEWAYS (4 LANES OR GREATER)

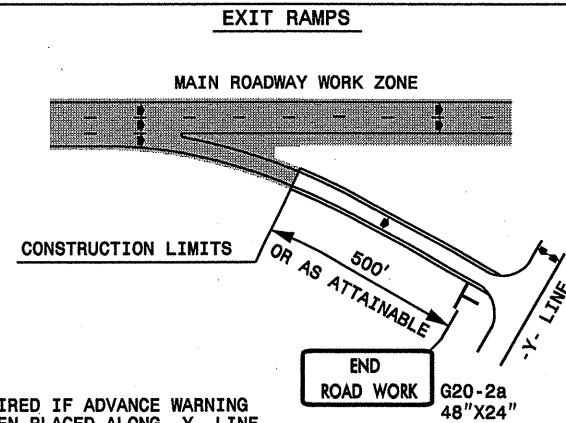
PROJ. REFERENCE NO.	SHEET NO.
I-4713	TCP-2

DETAIL A



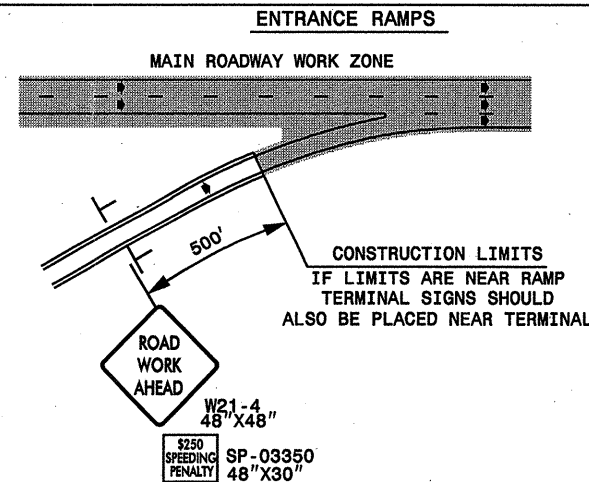
LEGEND	
	STATIONARY SIGN
◆	DIRECTION OF TRAFFIC FLOW

DETAIL B



NOTE: SIGN NOT REQUIRED IF ADVANCE WARNING SIGNS HAVE BEEN PLACED ALONG -Y- LINE THAT RAMP INTERSECTS. IF CONSTRUCTION LIMITS ARE AT END OF RAMP, PLACE SIGN AT END OF RAMP.

DETAIL C



GENERAL NOTES

- USE FLUORESCENT ORANGE SHEETING (TYPE VII OR HIGHER) ON ALL ADVANCED WORK ZONE SIGNS.
- DO NOT INSTALL ADVANCE WARNING SIGNS MORE THAN 3 DAYS PRIOR TO BEGINNING OF WORK.
- SIGNS SHOWN ARE REQUIRED FOR WORK ZONES THAT WILL REMAIN IN EFFECT OVERNIGHT. FOR SHORT-TERM DAILY MAINTENANCE TYPE OPERATIONS, THIS SIGNING APPLICATION IS OPTIONAL; MAY USE ONLY APPLICABLE ROADWAY STANDARD DRAWINGS INSTEAD. HOWEVER, IF THIS SIGNING APPLICATION IS USED, SIGNS MAY BE PORTABLE MOUNTED.
- ALL SIGN SPACING DIMENSIONS ARE APPROXIMATE, FIELD ADJUST AS NECESSARY OR AS DIRECTED.
- USE 3LB STEEL U-CHANNEL POST OR 4" X 4" WOOD POST FOR ALL WORK ZONE SIGNS. 3LB STEEL U-CHANNEL POSTS MUST MEET THE REQUIREMENTS OF STANDARD SPECIFICATION SECTION 1094-1(B), MAY BE GALVANIZED STEEL, OR MAY BE PAINTED GREEN BY THE POST MANUFACTURER. SQUARE STEEL TUBING POSTS HAVING EQUIVALENT STRENGTH OF THE 3 LB STEEL U-CHANNEL POST, ARE ALSO ACCEPTABLE FOR USE. ERECT SIGNS PER ROADWAY STANDARD DRAWING 1110.01. PAYMENT FOR WOOD POSTS, 3LB STEEL U-CHANNEL AND SQUARE STEEL TUBING POSTS WITH SIGNS WILL BE MADE ACCORDING TO STANDARD SPECIFICATION "WORK ZONE SIGNS" SECTION 1110.
- WHEN NECESSARY, USE SPLICING IN ACCORDANCE WITH ROADWAY STANDARD DRAWING NO. 1110.01. REMOVE ENTIRE POST WHEN REMOVING SIGNS WITH SPLICED POSTS.
- DO NOT BACK BRACE SIGN SUPPORTS.

APPROVED: _____	DATE: _____	ADVANCED WORK ZONE WARNING SIGNS FOR FREEWAYS (4 LANES OR GREATER)	
<div style="border: 1px solid black; border-radius: 50%; width: 60px; height: 60px; margin: 0 auto;"></div> <p style="font-size: 8px; margin: 0;">SEAL</p>	SCALE: NONE		REVISIONS
	DATE: 8/03		03/04
	DWG. BY: JI		
	DESIGN BY: JI		
REVIEWED BY: _____		CADD FILE	

06-JAN-2005 17:41 \\nets-ccr\fsol\TCU\TCU_20\Group_MM\Resurfacing\Div07\I-4713\Freeways_4lanes_or_greater.dgn
Jgalloway AT TETC87139