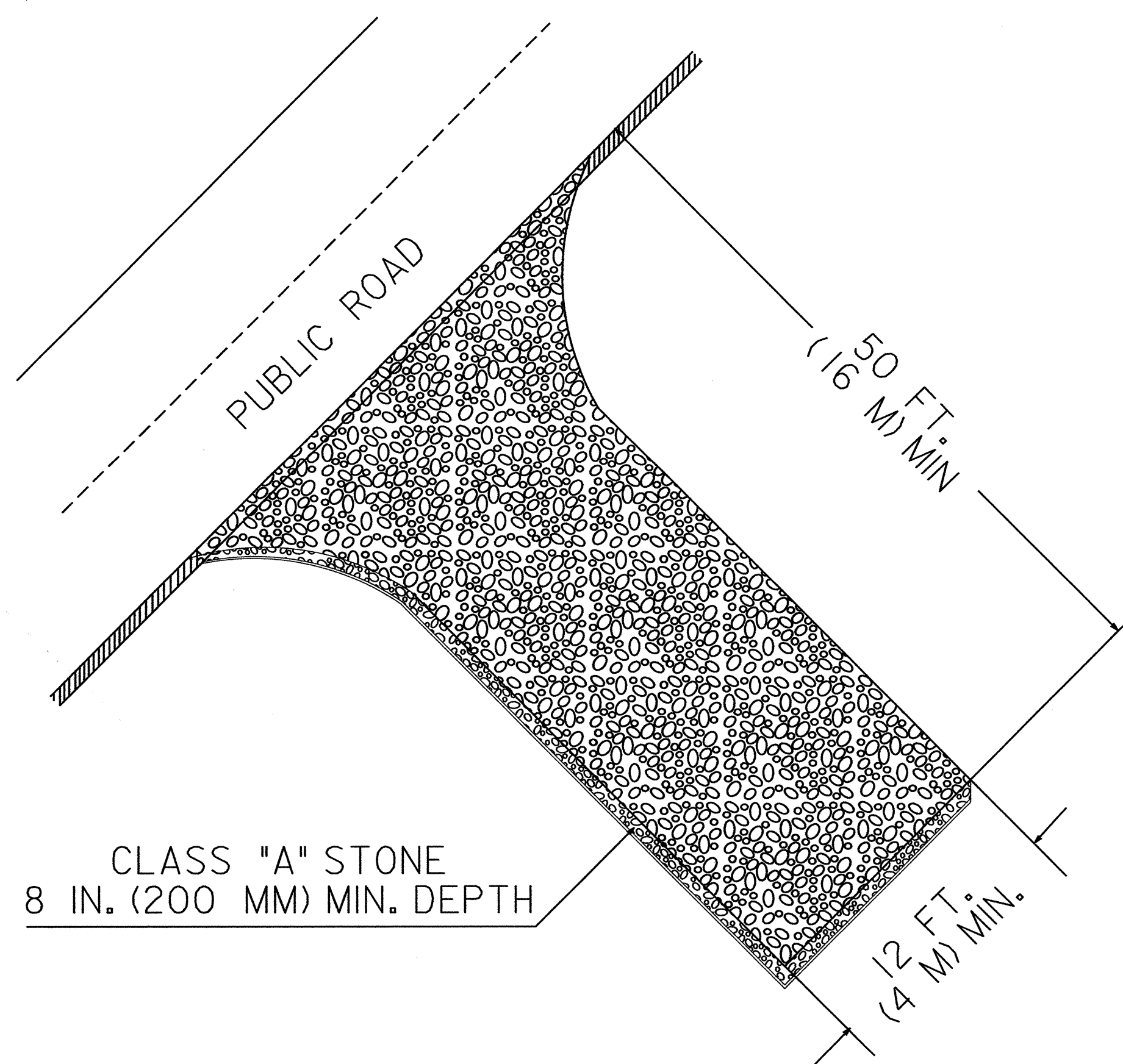


TEMPORARY GRAVEL CONSTRUCTION ENTRANCE



- NOTES:**
1. TURNING RADIUS SUFFICIENT TO ACCOMODATE LARGE TRUCKS SHALL BE PROVIDED.
 2. ENTRANCE(S) SHOULD BE LOCATED TO PROVIDE FOR UTILIZATION BY ALL CONSTRUCTION VEHICLES.
 3. MUST BE MAINTAINED IN A CONDITION WHICH WILL PREVENT TRACKING OR DIRECT FLOW OF MUD ONTO STREETS. PERIODIC TOPDRESSING WITH STONE WILL BE NECESSARY.
 4. ANY MATERIAL TRACKED ONTO THE ROADWAY MUST BE CLEANED UP IMMEDIATELY.
 5. GRAVEL CONSTRUCTION ENTRANCE SHALL BE LOCATED AT ALL POINTS OF INGRESS AND EGRESS UNTIL SITE IS STABILIZED. FREQUENT CHECKS OF THE DEVICE AND TIMELY MAINTENANCE MUST BE PROVIDED.
 6. NUMBER AND LOCATION OF CONSTRUCTION ENTRANCES TO BE DETERMINED BY THE ENGINEER.

NOTE: FILTER FABRIC TO BE PLACED BENEATH STONE.

EROSION AND SEDIMENT CONTROL MEASURES

Std. #	Description	Symbol
	Reforestation	
1630.03	Temporary Silt Ditch	
1630.05	Temporary Diversion	
1605.01	Temporary Silt Fence	
1606.01	Special Sediment Control Fence	
1622.01	Temporary Berms and Slope Drains	
1630.01	Riser Basin	
1630.02	Silt Basin Type B	
1633.01	Temporary Rock Silt Check Type-A	
1633.02	Temporary Rock Silt Check Type-B	
1634.01	Temporary Rock Sediment Dam Type-A	
1634.02	Temporary Rock Sediment Dam Type-B	
1635.01	Rock Pipe Inlet Sediment Trap Type-A	
1635.02	Rock Pipe Inlet Sediment Trap Type-B	
1636.01	Rock Silt Screen	
1630.04	Stilling Basin	
	Rock Inlet Sediment Trap:	
1632.01	Type A	A OR A)
1632.02	Type B	B OR B)
1632.03	Type C	C OR C)

Roadway Standard Drawings:
 The following roadway english standards as appear in "Roadway Standard Drawings"- Roadway Design Unit - N. C. Department of Transportation - Raleigh, N. C., dated July 18, 2006 and the latest revision thereto are applicable to this project and by reference hereby are considered a part of these plans.

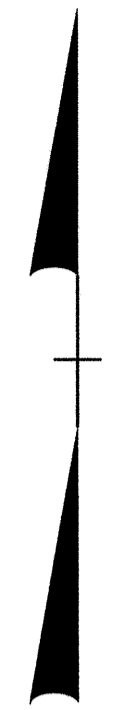
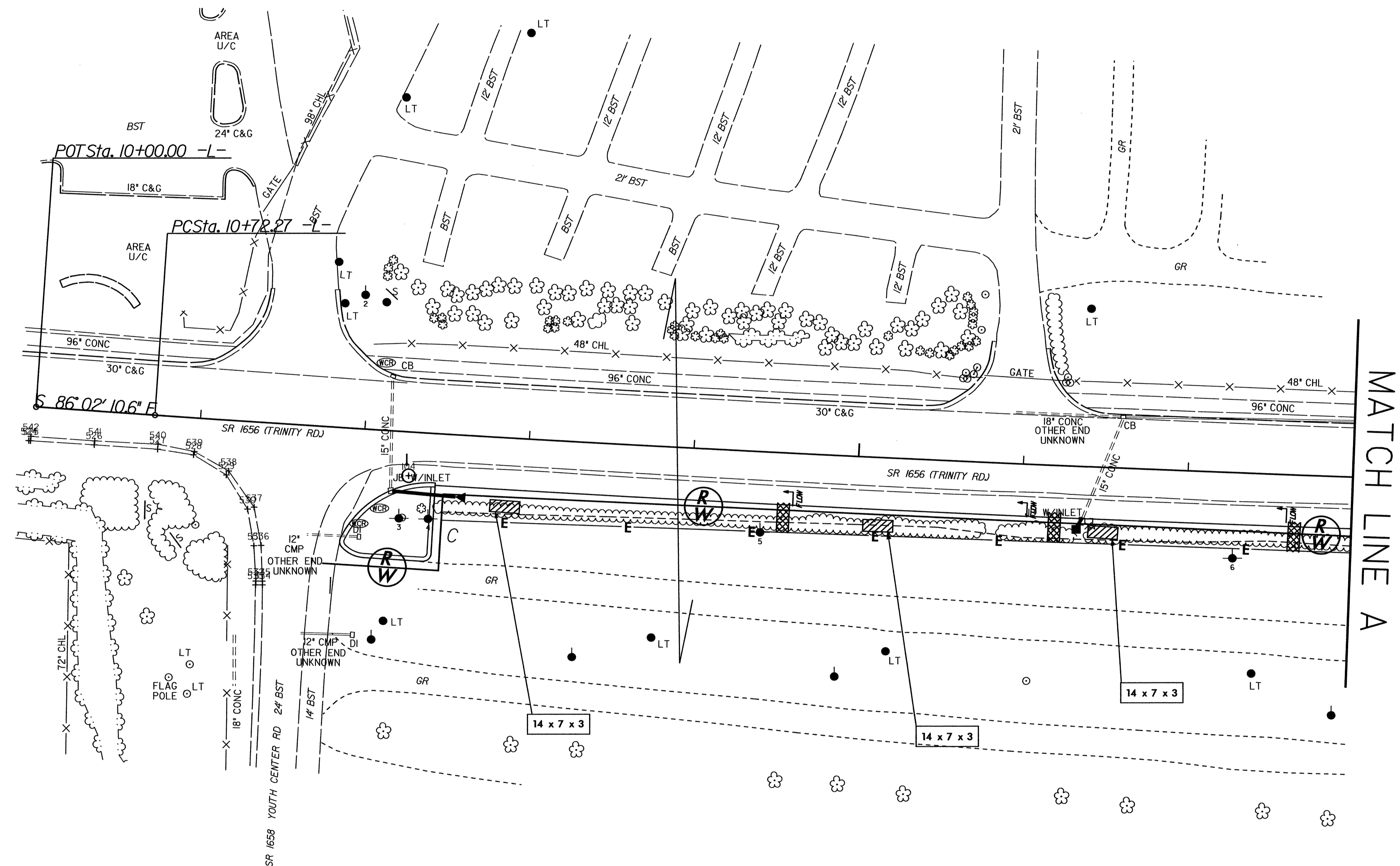
- | | |
|------------------------------|--|
| 1605.01 Temporary Silt Fence | 1632.03 Rock Inlet Sediment Trap Type C |
| 1630.02 Silt Basin Type B | 1633.01 Temporary Rock Silt Check Type A |
| 1630.05 Temporary Diversion | 1633.02 Temporary Check Type B |
| | 1634.02 Temporary Rock Sediment Dam Type B |

WIDEN FOR TURN LANES AT SR 1656 (TRINITY ROAD) AND SR 1664 (BLUE RIDGE ROAD)			
DIVISION 05	WAKE COUNTY	RALEIGH	
REVISIONS			SCALE: DATE: 06/03
			PREPARED BY: M. BRANDON
			REVIEWED BY: B. UPSHAW
			REVIEWED BY: B. JONES
N.C. DEPARTMENT of TRANSPORTATION DIVISION of HIGHWAYS DIVISION FIVE DESIGN UNIT			

NOTE:
PLACE TEMPORARY ROCK SEDIMENT DAMS TYPE- B
AND TEMPORARY ROCK SILT CHECKS TYPE-A AT
DRAINAGE OUTLETS.

CLEARING AND GRUBBING
EROSION CONTROL FOR
CONSTRUCTION SHEET 4

PI Sta 14+52.81
 $\Delta = 1^{\circ} 59' 16.7''$ (LT)
 $D = 0^{\circ} 15' 40.4''$
 $L = 761.01'$
 $T = 380.54'$
 $R = 21,933.24'$

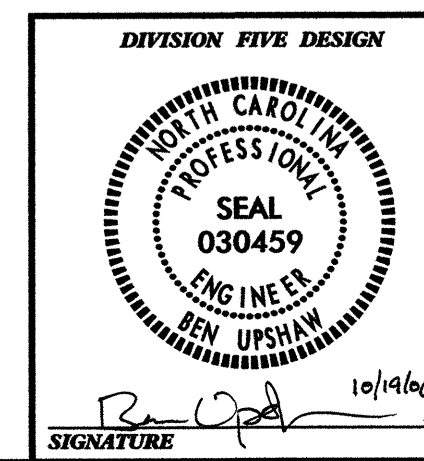
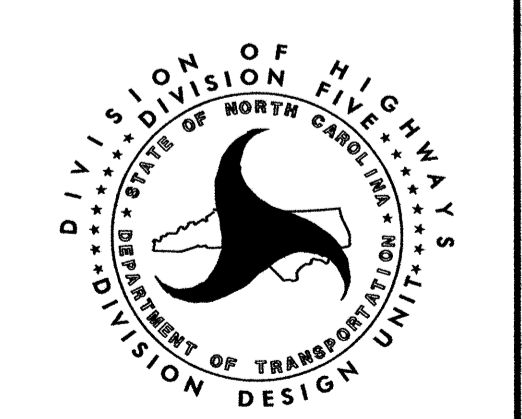


MATCH LINE A

**WIDEN FOR TURN LANES AT
SR 1656 (TRINITY ROAD) AND
SR 1664 (BLUE RIDGE ROAD)**

DIVISION 05 WAKE COUNTY RALEIGH

REVISIONS	INT.	DATE

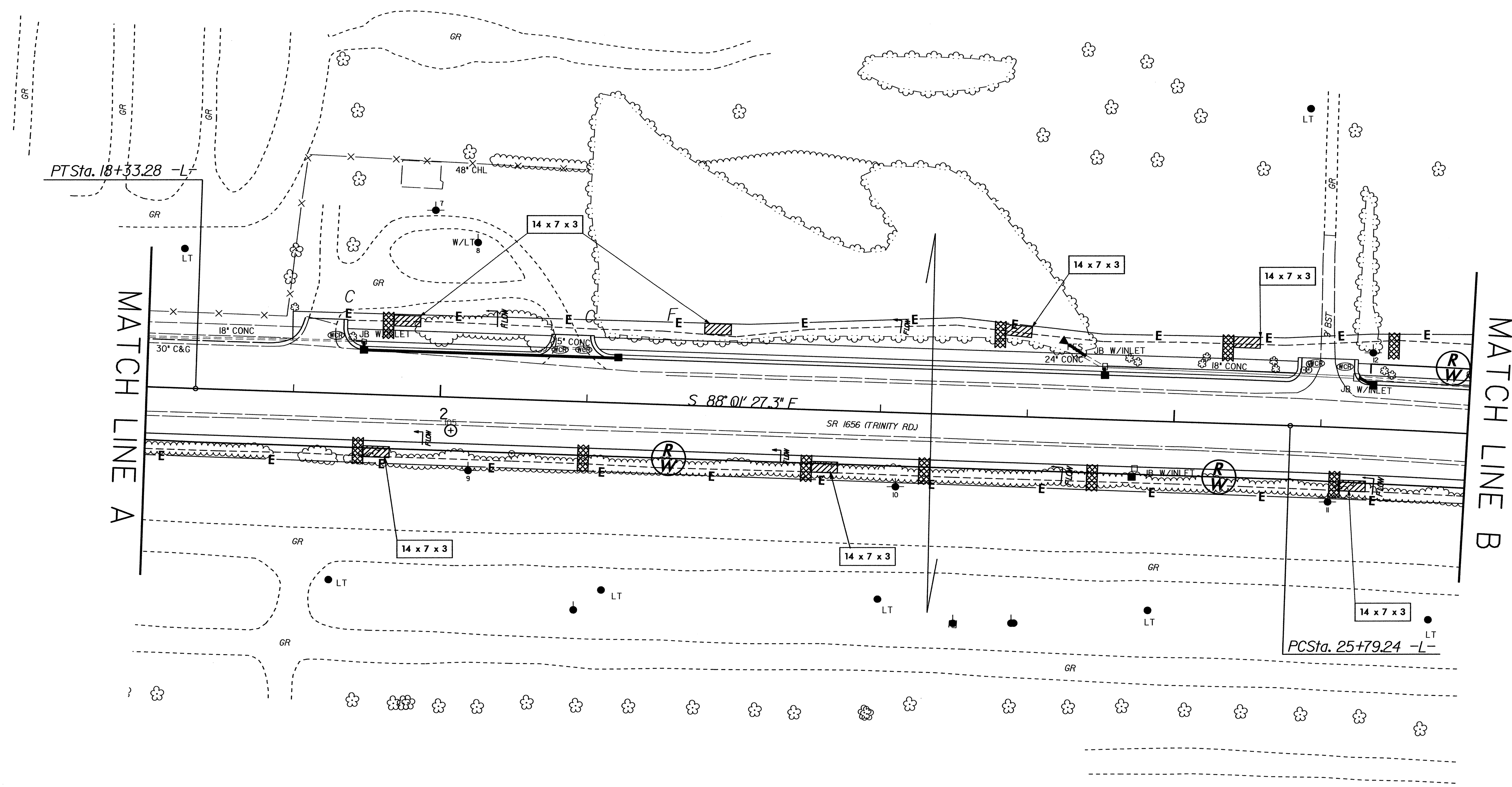


**N.C. DEPARTMENT of TRANSPORTATION
DIVISION of HIGHWAYS
DIVISION FIVE DESIGN UNIT**

SCALE: DATE: 6/03
 PREPARED BY: M. BRANDON
 REVIEWED BY: B. UPSHAW
 REVIEWED BY: B. JONES

NOTE:
PLACE TEMPORARY ROCK SEDIMENT DAMS TYPE- B
AND TEMPORARY ROCK SILT CHECKS TYPE-A AT
DRAINAGE OUTLETS.

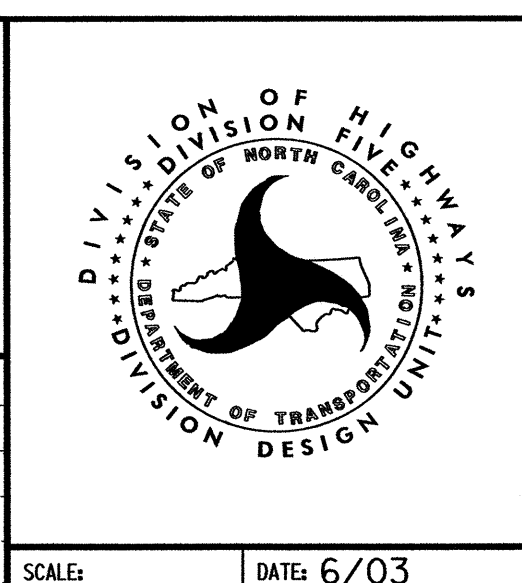
CLEARING AND GRUBBING
EROSION CONTROL FOR
CONSTRUCTION SHEET 5



**WIDEN FOR TURN LANES AT
SR 1656 (TRINITY ROAD) AND
SR 1664 (BLUE RIDGE ROAD)**

DIVISION 05 WAKE COUNTY RALEIGH

REVISIONS	INIT.	DATE



DIVISION FIVE DESIGN

NORTH CAROLINA
PROFESSIONAL
SEAL
030459
ENGINEER
BEN UPSHAW

B. Upshaw 10/19/06 P.E.
SIGNATURE

**N.C. DEPARTMENT of TRANSPORTATION
DIVISION of HIGHWAYS
DIVISION FIVE DESIGN UNIT**

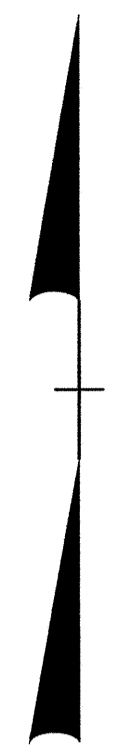
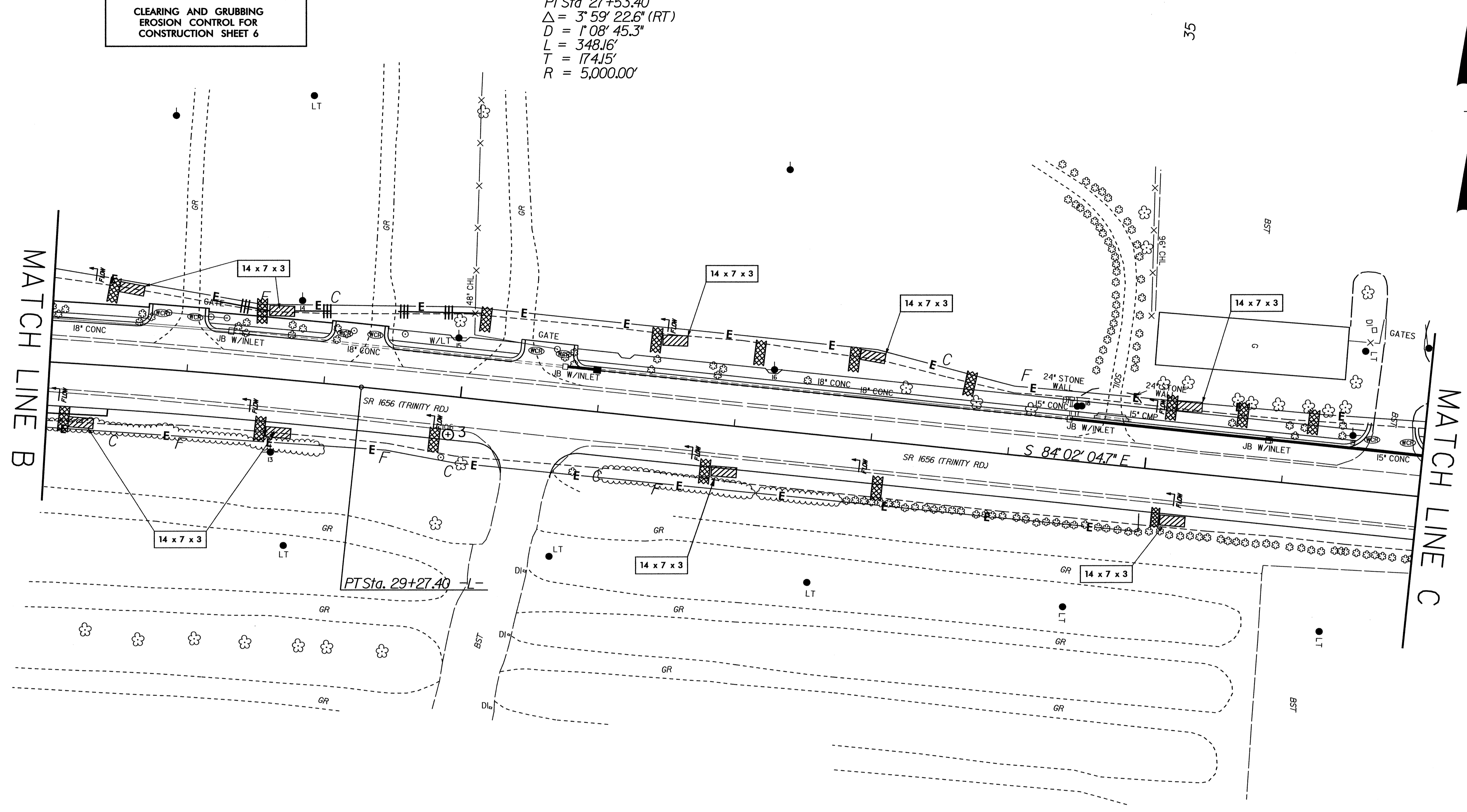
SCALE: DATE: 6/03

PREPARED BY: M. BRANDON
REVIEWED BY: B. UPSHAW
REVIEWED BY: B. JONES

NOTE: PLACE TEMPORARY ROCK SEDIMENT DAMS TYPE- B AND TEMPORARY ROCK SILT CHECKS TYPE-A AT DRAINAGE OUTLETS.

CLEARING AND GRUBBING EROSION CONTROL FOR CONSTRUCTION SHEET 6

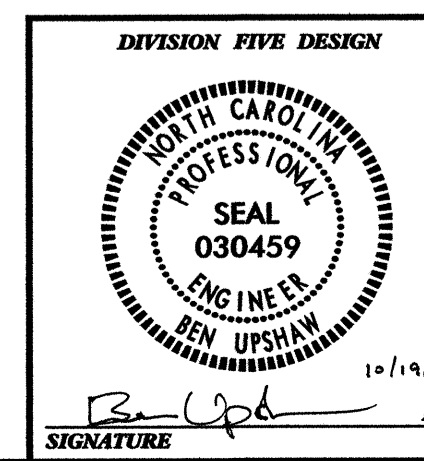
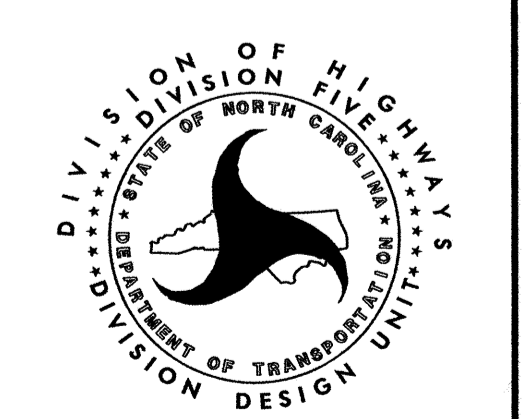
PI Sta 27+53.40
 $\Delta = 3^{\circ} 59' 22.6''$ (RT)
 $D = 1^{\circ} 08' 45.3''$
 $L = 348.16'$
 $T = 174.15'$
 $R = 5,000.00'$



**WIDEN FOR TURN LANES AT
 SR 1656 (TRINITY ROAD) AND
 SR 1664 (BLUE RIDGE ROAD)**

DIVISION 05 WAKE COUNTY RALEIGH

REVISIONS	INT.	DATE



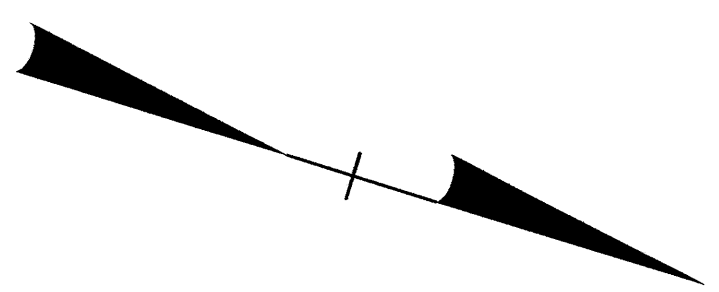
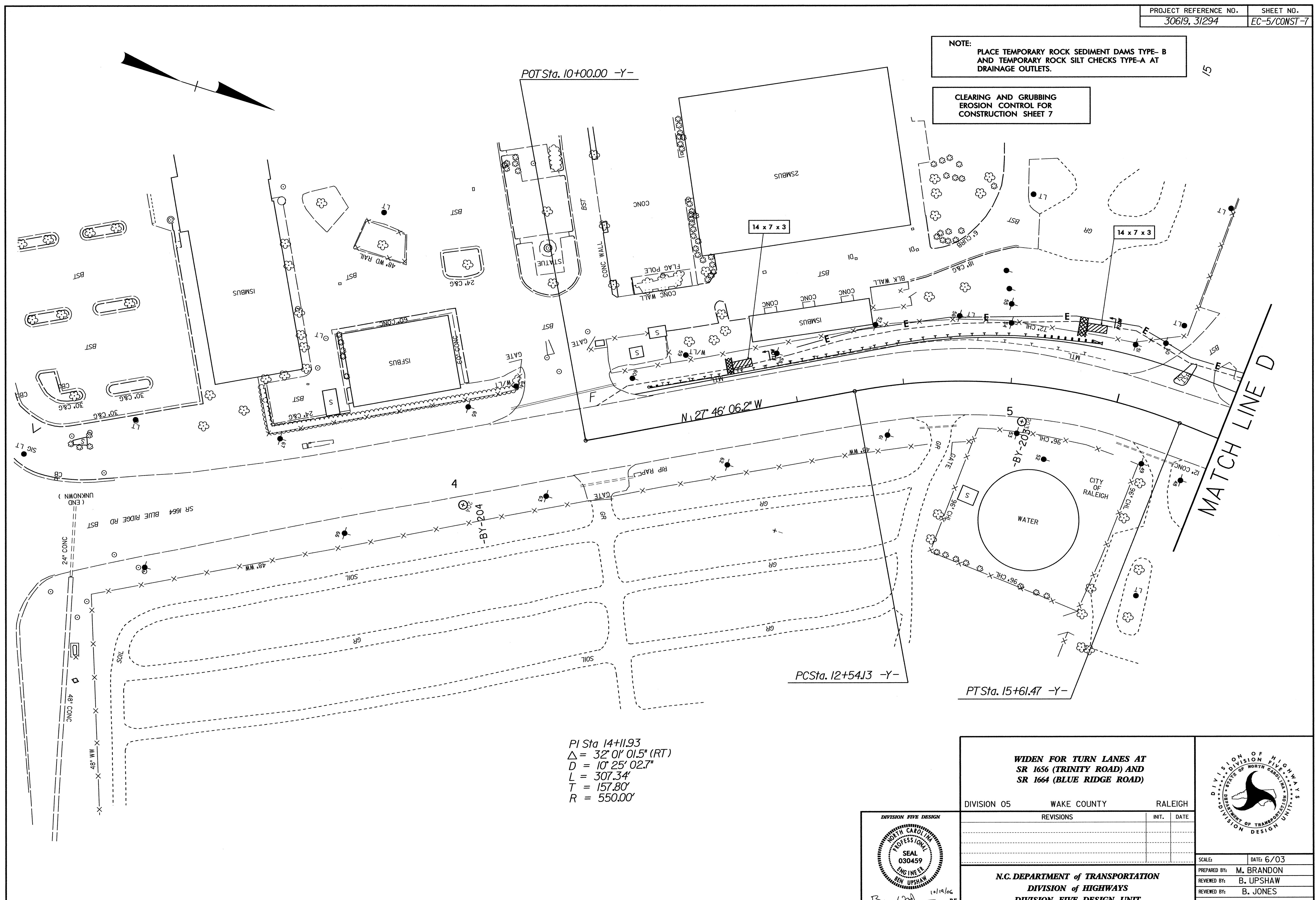
N.C. DEPARTMENT of TRANSPORTATION
 DIVISION of HIGHWAYS
 DIVISION FIVE DESIGN UNIT

SCALE: DATE: 6/03
 PREPARED BY: M. BRANDON
 REVIEWED BY: B. UPSHAW
 REVIEWED BY: B. JONES

NOTE: PLACE TEMPORARY ROCK SEDIMENT DAMS TYPE-B AND TEMPORARY ROCK SILT CHECKS TYPE-A AT DRAINAGE OUTLETS.

CLEARING AND GRUBBING EROSION CONTROL FOR CONSTRUCTION SHEET 7

15



POT Sta. 10+00.00 -Y-

N 27° 46' 06.2" W

PC Sta. 12+54.13 -Y-

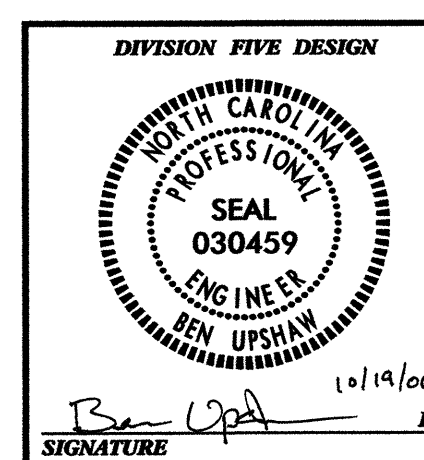
PT Sta. 15+61.47 -Y-

PI Sta 14+11.93
 $\Delta = 32' 01" 01.5" (RT)$
 $D = 10' 25' 02.7"$
 $L = 307.34'$
 $T = 157.80'$
 $R = 550.00'$

MATCH LINE D

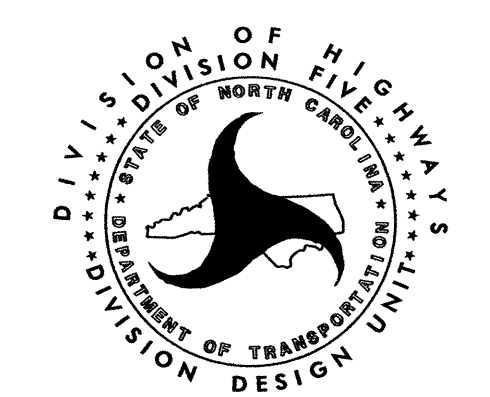
WIDEN FOR TURN LANES AT SR 1666 (TRINITY ROAD) AND SR 1664 (BLUE RIDGE ROAD)

DIVISION 05	WAKE COUNTY	RALEIGH
REVISIONS	INIT.	DATE



10/14/06
 SIGNATURE P.E.

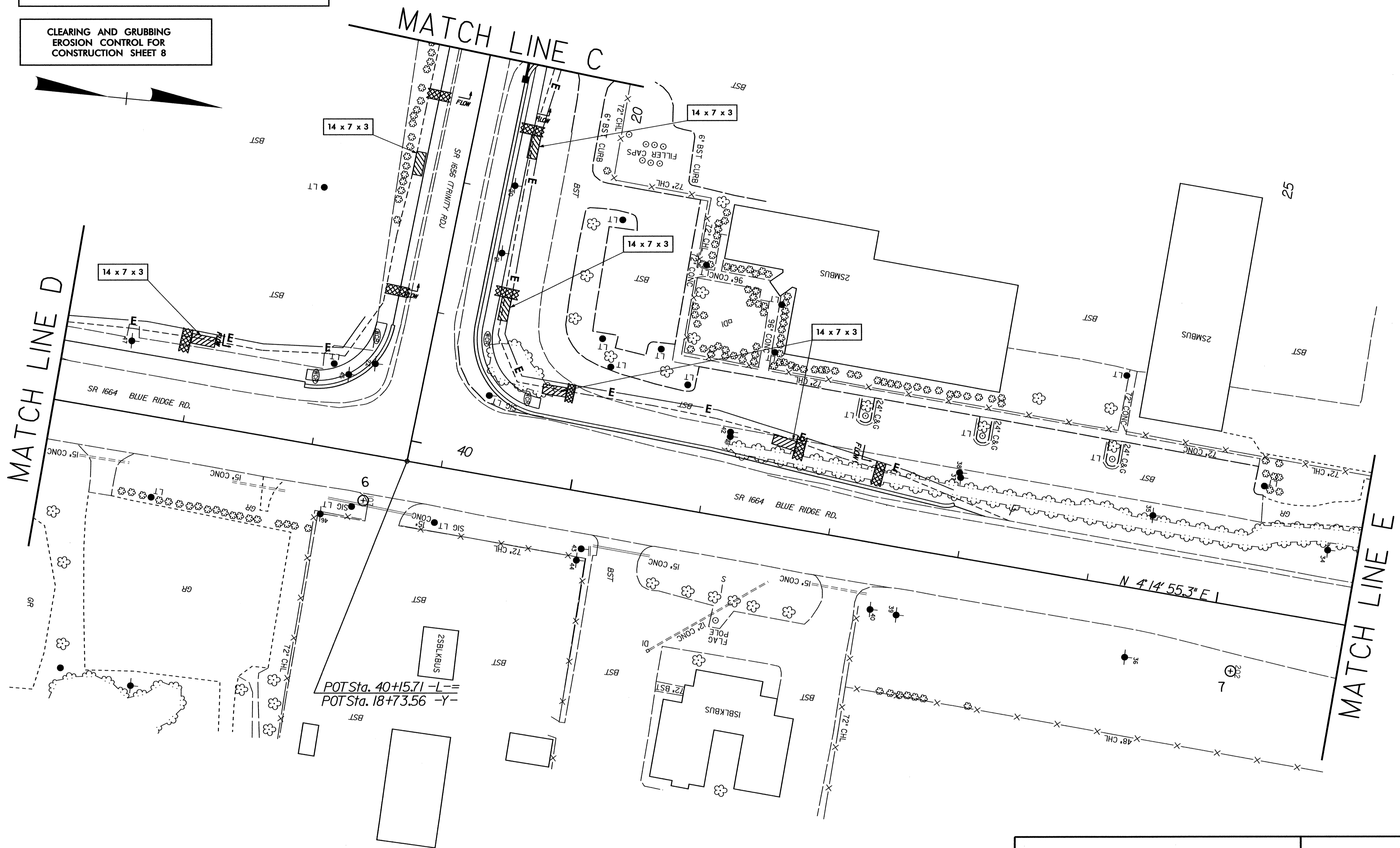
N.C. DEPARTMENT of TRANSPORTATION
 DIVISION of HIGHWAYS
 DIVISION FIVE DESIGN UNIT



SCALE: DATE: 6/03
 PREPARED BY: M. BRANDON
 REVIEWED BY: B. UPSHAW
 REVIEWED BY: B. JONES

NOTE:
PLACE TEMPORARY ROCK SEDIMENT DAMS TYPE- B
AND TEMPORARY ROCK SILT CHECKS TYPE-A AT
DRAINAGE OUTLETS.

CLEARING AND GRUBBING
EROSION CONTROL FOR
CONSTRUCTION SHEET 8



**WIDEN FOR TURN LANES AT
SR 1656 (TRINITY ROAD) AND
SR 1664 (BLUE RIDGE ROAD)**

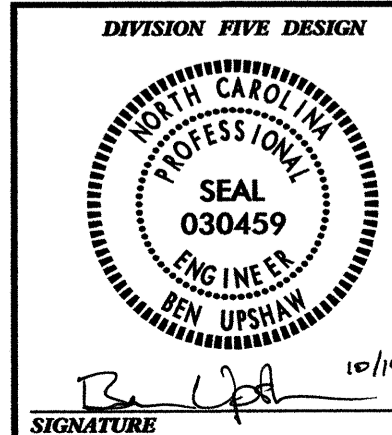
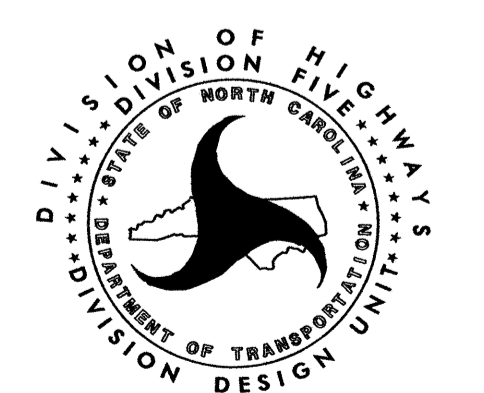
DIVISION 05 WAKE COUNTY RALEIGH

REVISIONS	INT.	DATE

SCALE: DATE: 6/03

PREPARED BY: M. BRANDON
REVIEWED BY: B. UPSHAW
REVIEWED BY: B. JONES

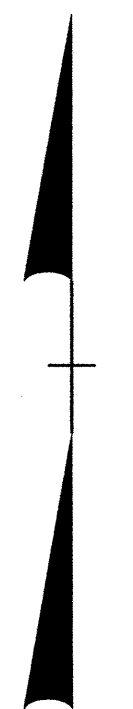
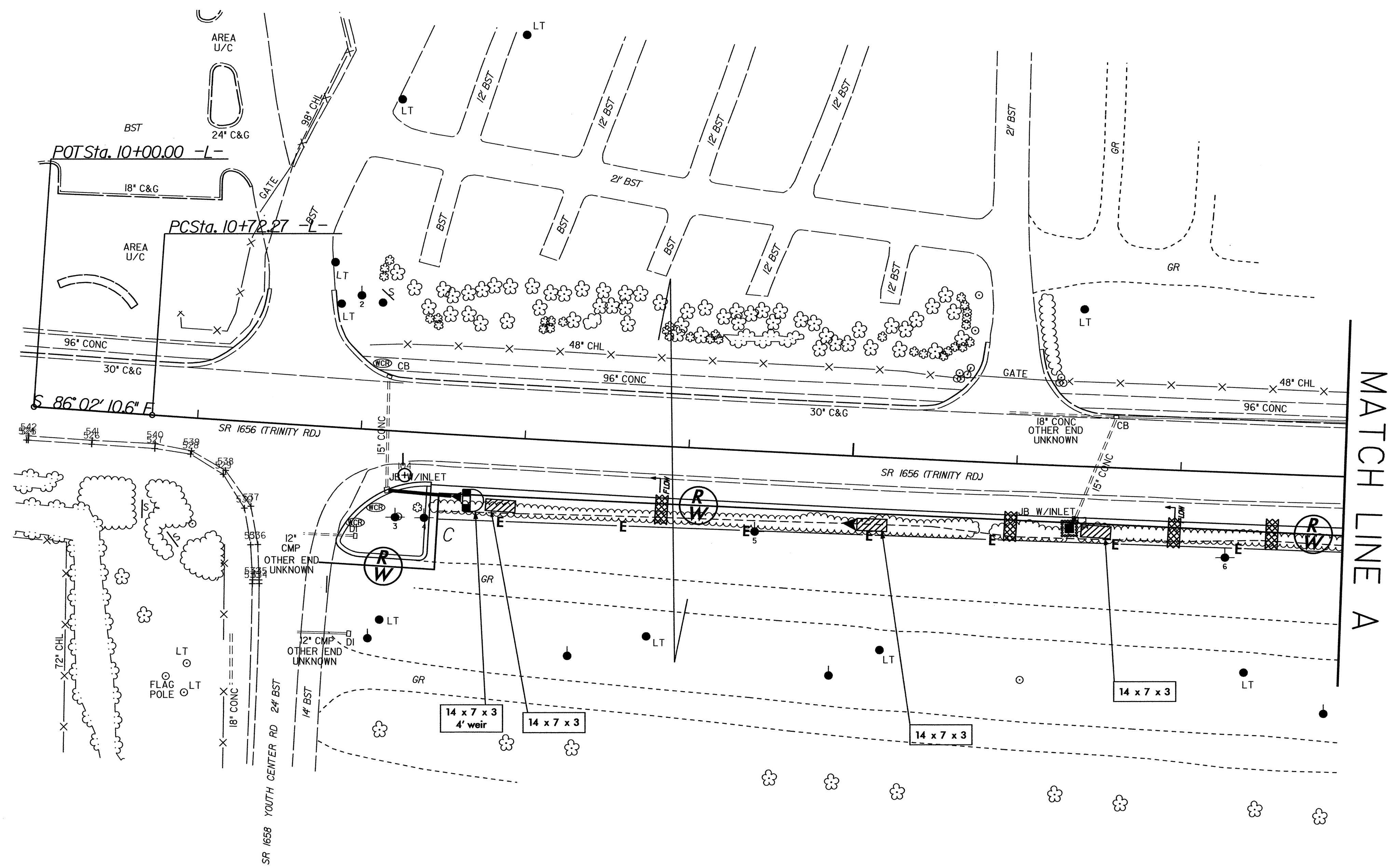
**N.C. DEPARTMENT of TRANSPORTATION
DIVISION of HIGHWAYS
DIVISION FIVE DESIGN UNIT**



NOTE:
PLACE TEMPORARY ROCK SEDIMENT DAMS TYPE- B
AND TEMPORARY ROCK SILT CHECKS TYPE-A AT
DRAINAGE OUTLETS.

CLEARING AND GRUBBING
EROSION CONTROL FOR
CONSTRUCTION SHEET 4

PI Sta 14+52.81
Δ = 1° 59' 16.7" (LT)
D = 0° 15' 40.4"
L = 761.0'
T = 380.54'
R = 21,933.24'



**WIDEN FOR TURN LANES AT
SR 1656 (TRINITY ROAD) AND
SR 1664 (BLUE RIDGE ROAD)**

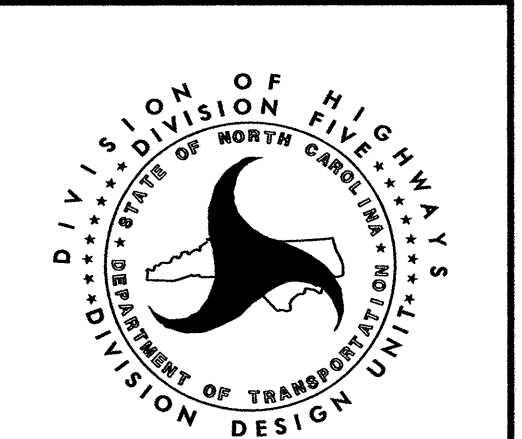
DIVISION 05 WAKE COUNTY RALEIGH

REVISIONS	INIT.	DATE

SCALE: DATE: 6/03

PREPARED BY: M. BRANDON
REVIEWED BY: B. UPSHAW
REVIEWED BY: B. JONES

**N.C. DEPARTMENT of TRANSPORTATION
DIVISION of HIGHWAYS
DIVISION FIVE DESIGN UNIT**



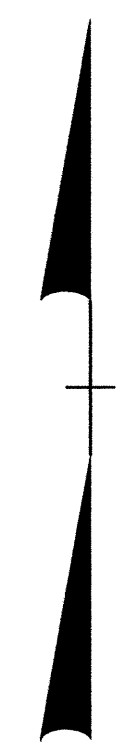
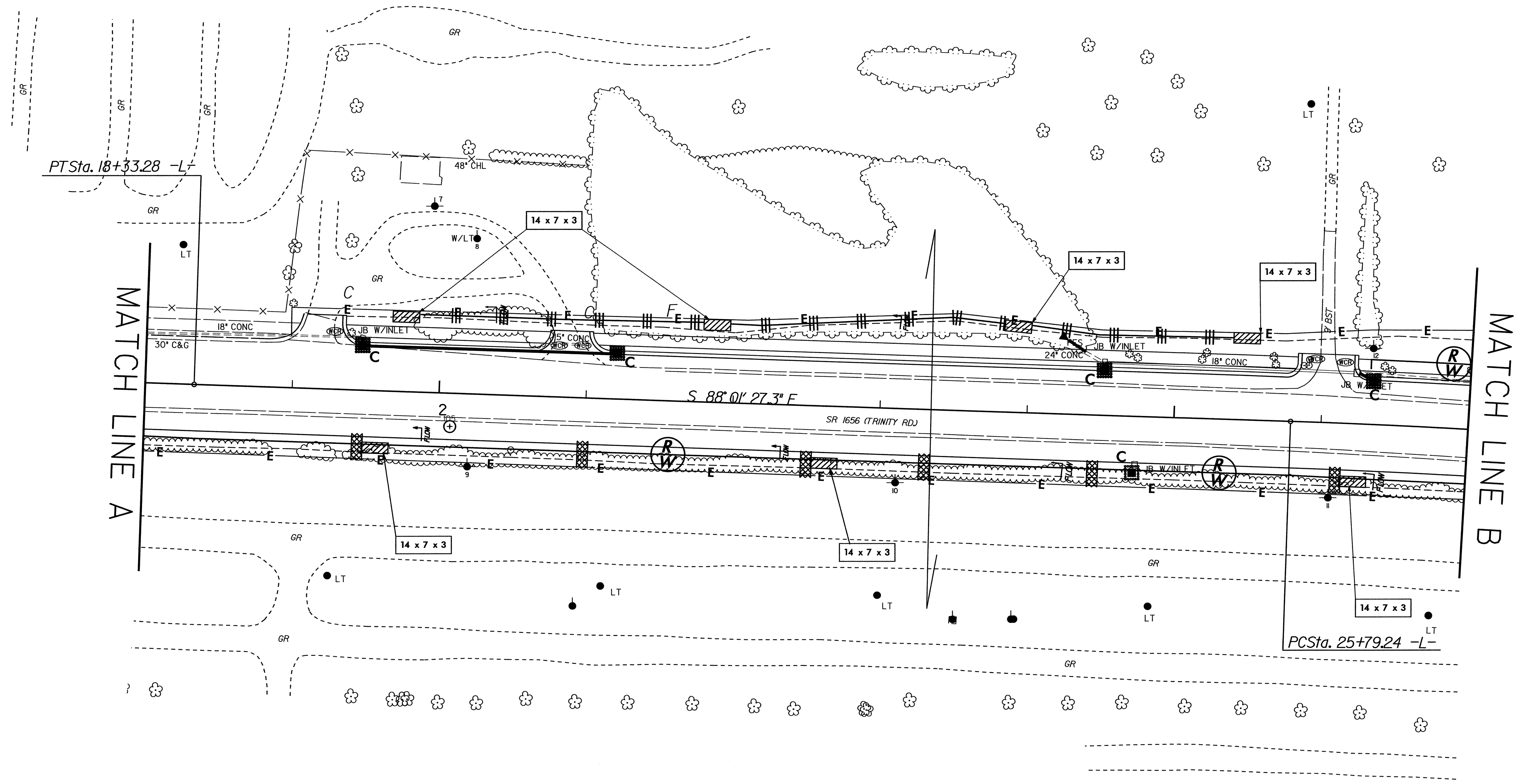
DIVISION FIVE DESIGN

PROFESSIONAL ENGINEER
SEAL 030459
BEN UPSHAW

B. Upshaw
SIGNATURE P.E.

NOTE:
PLACE TEMPORARY ROCK SEDIMENT DAMS TYPE- B
AND TEMPORARY ROCK SILT CHECKS TYPE-A AT
DRAINAGE OUTLETS.

CLEARING AND GRUBBING
EROSION CONTROL FOR
CONSTRUCTION SHEET 5



**WIDEN FOR TURN LANES AT
SR 1656 (TRINITY ROAD) AND
SR 1664 (BLUE RIDGE ROAD)**

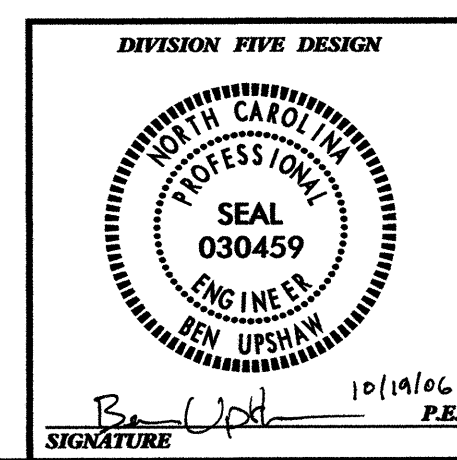
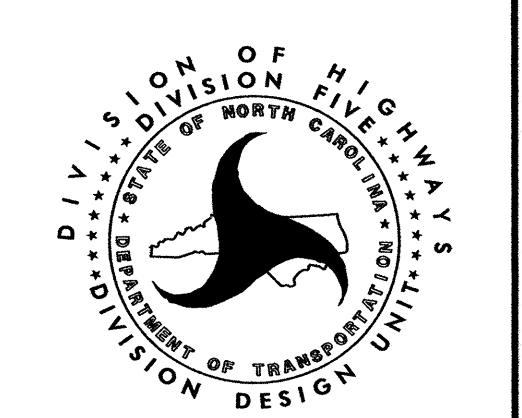
DIVISION 05 WAKE COUNTY RALEIGH

REVISIONS	INT.	DATE

SCALE: DATE: 6/03

PREPARED BY: M. BRANDON
REVIEWED BY: B. UPSHAW
REVIEWED BY: B. JONES

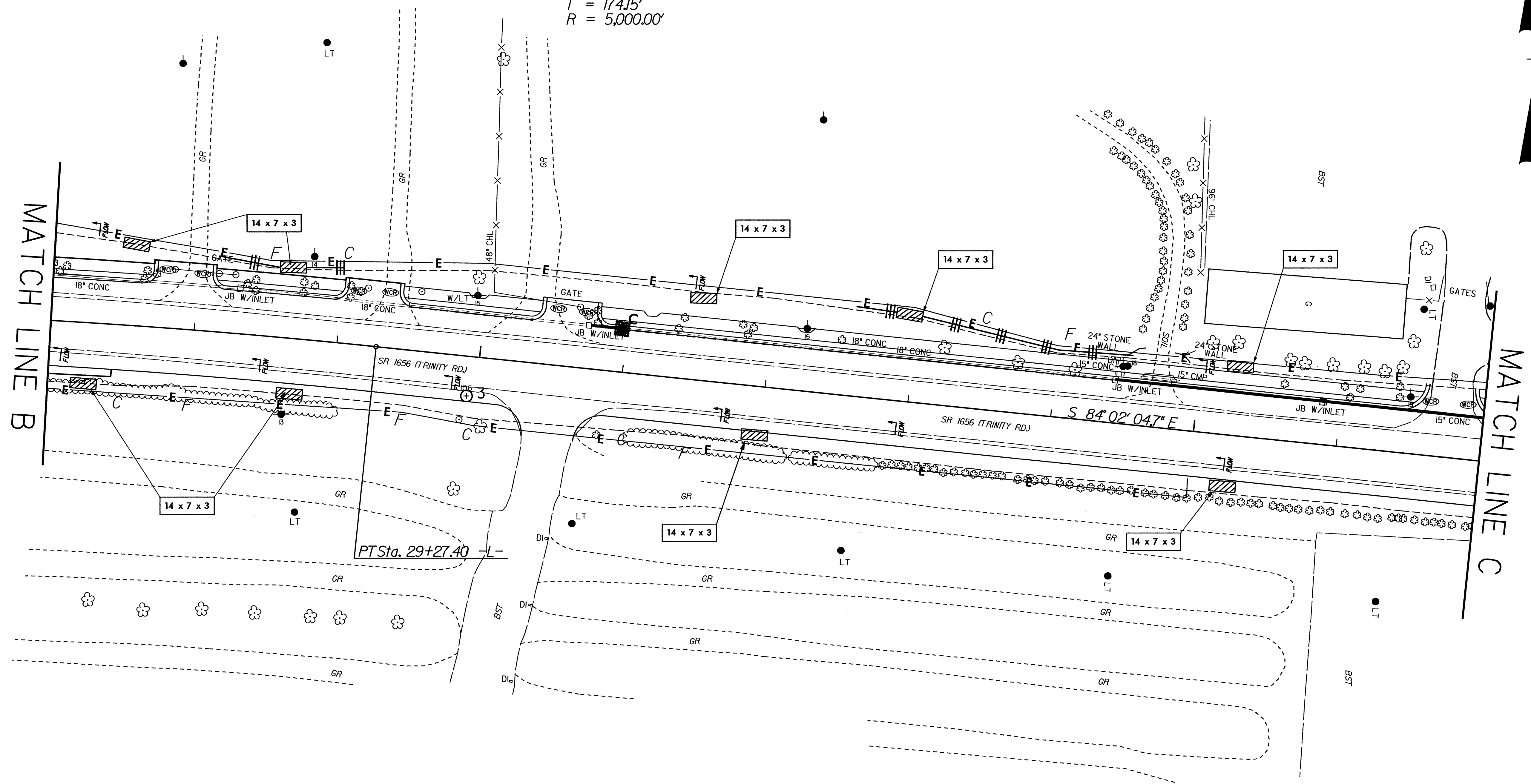
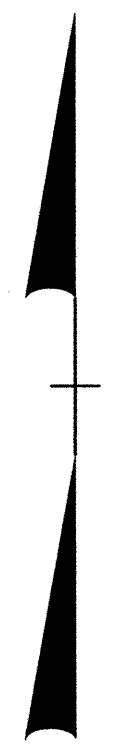
**N.C. DEPARTMENT of TRANSPORTATION
DIVISION of HIGHWAYS
DIVISION FIVE DESIGN UNIT**



30

35

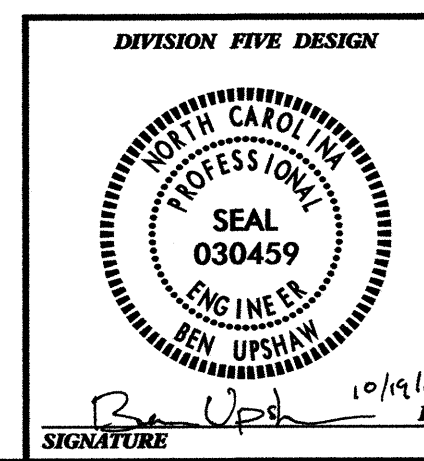
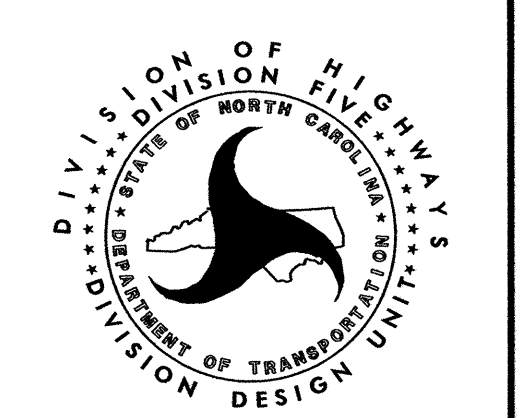
PI Sta 27+53.40
 $\Delta = 3^{\circ} 59' 22.6''$ (RT)
 $D = 1^{\circ} 08' 45.3''$
 $L = 348.16'$
 $T = 174.15'$
 $R = 5,000.00'$



**WIDEN FOR TURN LANES AT
 SR 1656 (TRINITY ROAD) AND
 SR 1664 (BLUE RIDGE ROAD)**

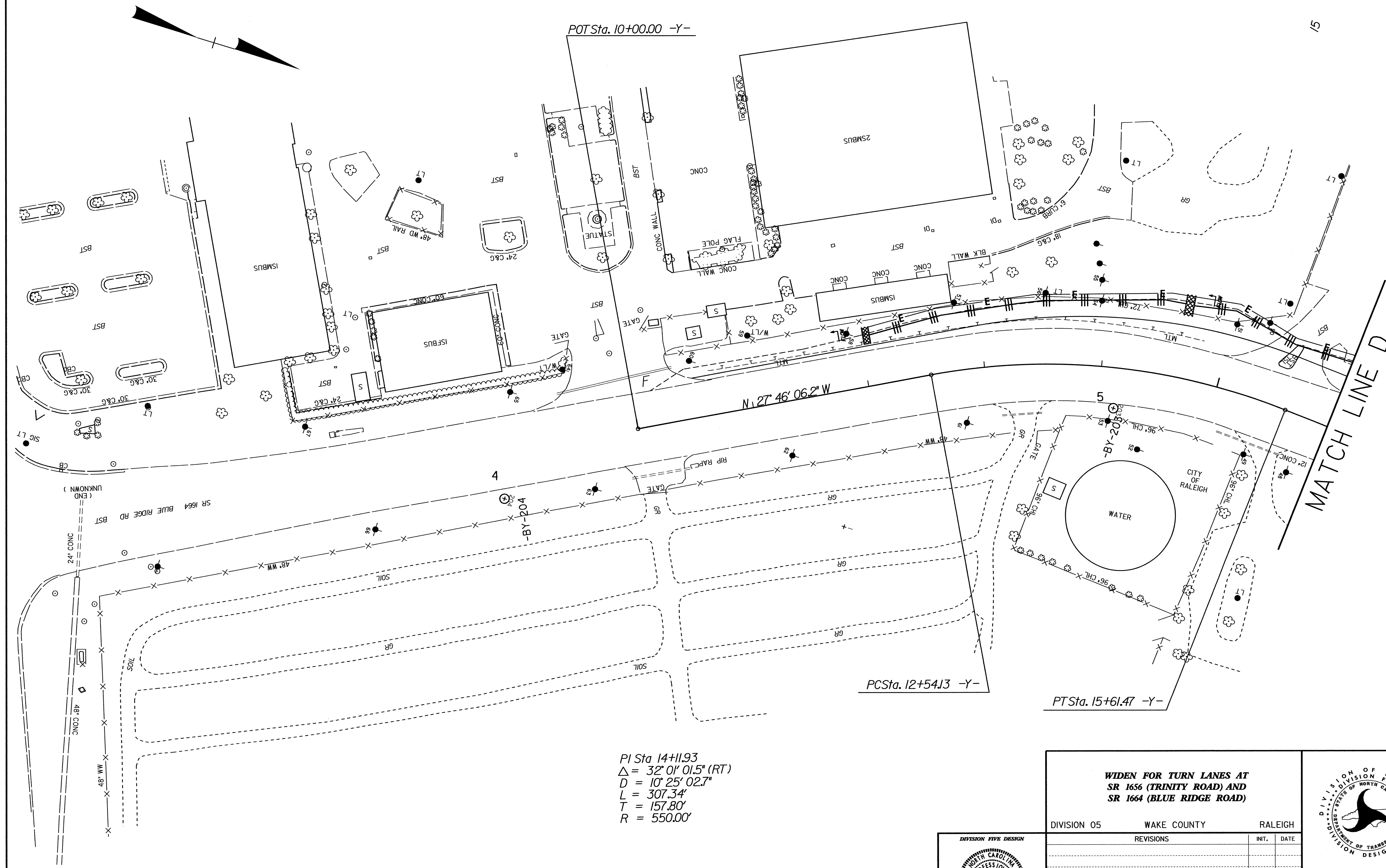
DIVISION 05 WAKE COUNTY RALEIGH

REVISIONS	INT.	DATE

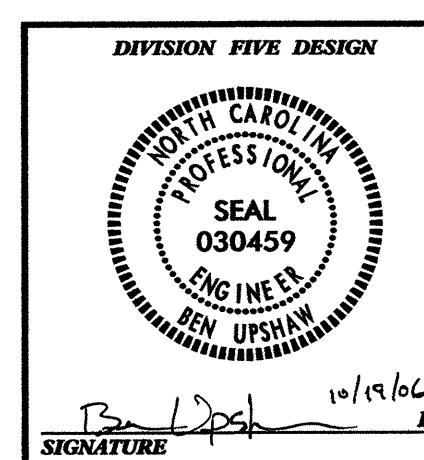


**N.C. DEPARTMENT of TRANSPORTATION
 DIVISION of HIGHWAYS
 DIVISION FIVE DESIGN UNIT**

SCALE: DATE: 6/03
 PREPARED BY: M. BRANDON
 REVIEWED BY: B. UPSHAW
 REVIEWED BY: B. JONES



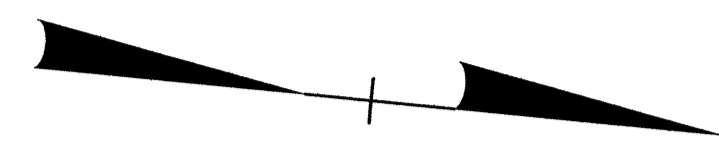
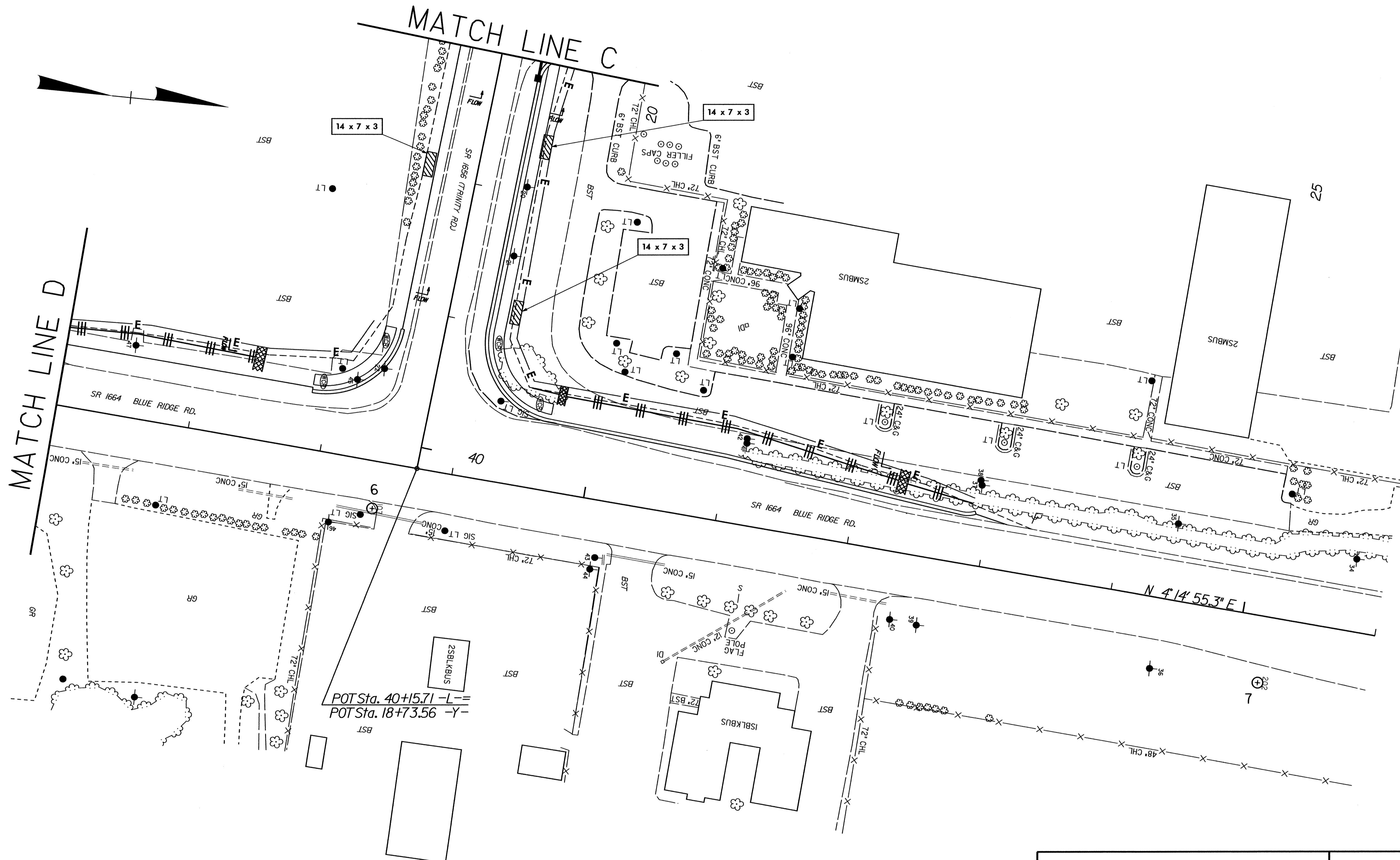
PI Sta 14+11.93
 $\Delta = 32^{\circ} 01' 01.5''$ (RT)
 $D = 10^{\circ} 25' 02.7''$
 $L = 307.34'$
 $T = 157.80'$
 $R = 550.00'$



WIDEN FOR TURN LANES AT SR 1656 (TRINITY ROAD) AND SR 1664 (BLUE RIDGE ROAD)	
DIVISION 05	WAKE COUNTY
RALEIGH	
REVISIONS	INIT. DATE
N.C. DEPARTMENT of TRANSPORTATION DIVISION of HIGHWAYS DIVISION FIVE DESIGN UNIT	

SCALE: DATE: 6/03

PREPARED BY: M. BRANDON
 REVIEWED BY: B. UPSHAW
 REVIEWED BY: B. JONES



**WIDEN FOR TURN LANES AT
SR 1656 (TRINITY ROAD) AND
SR 1664 (BLUE RIDGE ROAD)**

DIVISION 05		WAKE COUNTY	RALEIGH
REVISIONS	INIT.	DATE	

SCALE: _____

DATE: 6/03

PREPARED BY: M. BRANDON

REVIEWED BY: B. UPSHAW

REVIEWED BY: B. JONES

N.C. DEPARTMENT of TRANSPORTATION
DIVISION of HIGHWAYS
DIVISION FIVE DESIGN UNIT

