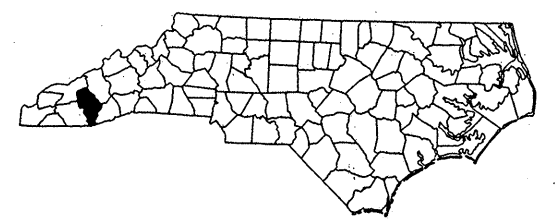
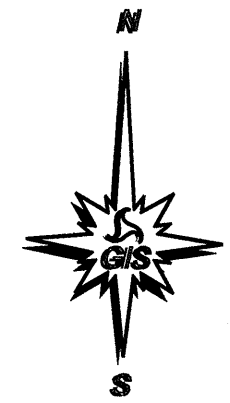
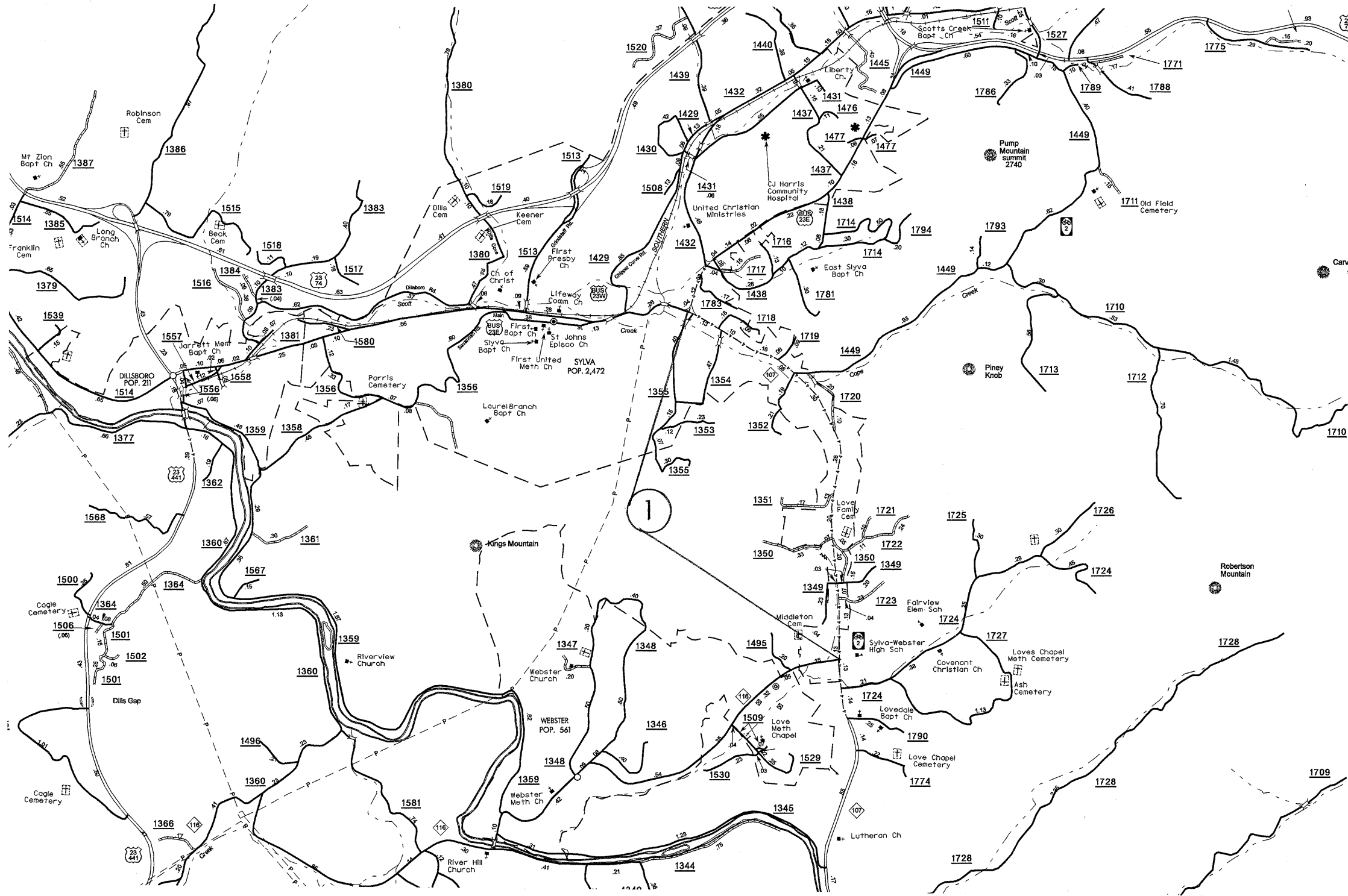


JACKSON COUNTY

NORTH CAROLINA

201687

PROJECT REFERENCE NO.	SHEET NO.	
40970	1 of 4	
STATE PROJECT	F.A.PROJECT NO.	DESCRIPTION
40970		

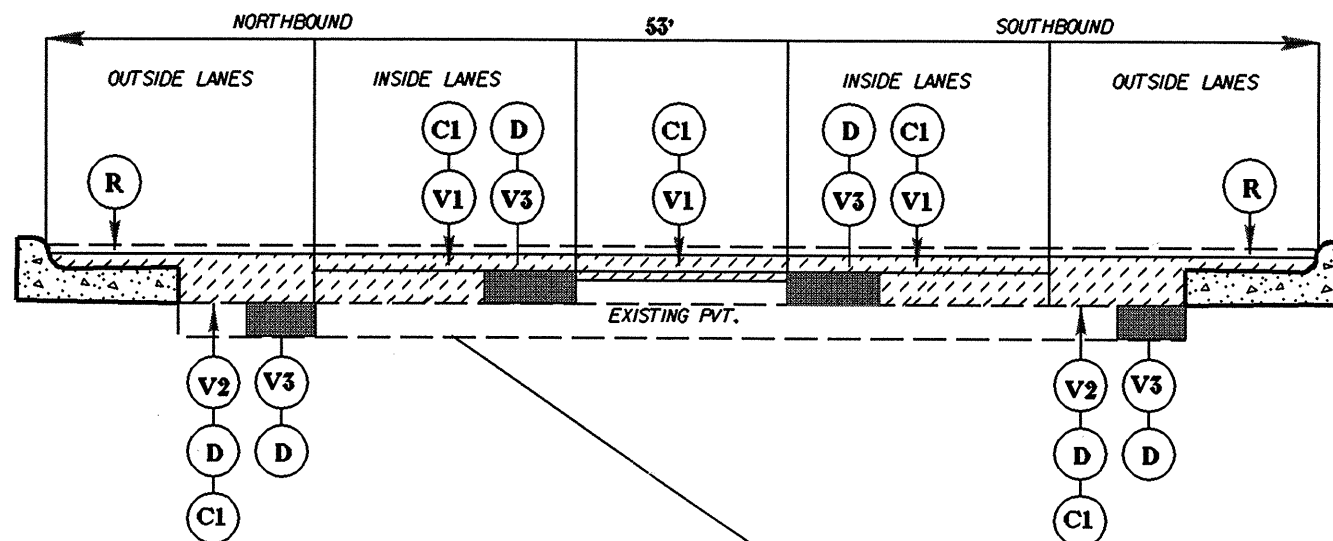


PROJECT NO.	SHEET NO.	TOTAL NO.
40,970	2	4

SUMMARY OF QUANTITIES

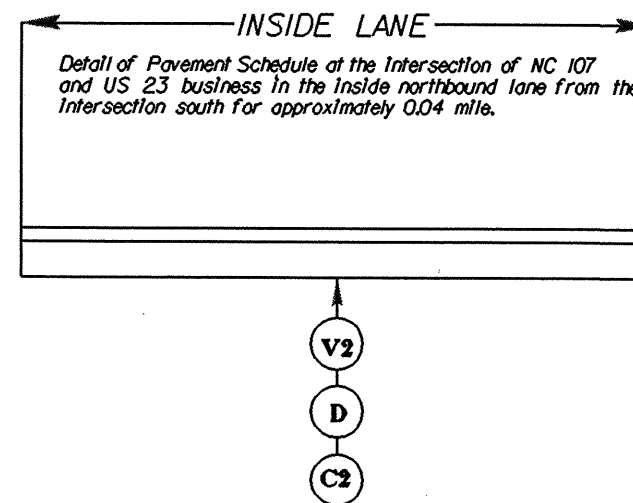
PROJECT NO	COUNTY	MAP NO	ROUTE	DESCRIPTION	TYP	LENGTH MI	WIDTH FT	REMOVE ASPHALT MATERIAL FROM CONCRETE GUTTER SY	PIPE CLEAN OUT EA	1 1/2" MILLING SY	4 1/2" MILLING SY	INTERMEDIATE COURSE, 119.0B TONS	SURFACE COURSE, S9.5B TONS	SURFACE COURSE, S9.5C TONS	PG 64-22 PLANT MIX TONS	PG 70-22 PLANT MIX TONS	MASONRY DRAINAGE STRUCTURE REPAIR EA	FRAME WITH 2 GRATES, 840.16 EA	FRAME WITH 2 GRATES, 840.03 EA	DRAINAGE STRUCTURE CLEAN-OUT EA	2'-6" CURB & GUTTER LF	6" CONCRETE DRIVEWAYS SY	RETROFIT EXISTING WHEELCHAIR RAMPS EA	DROP INLET EA	MANHOLES EA	METER OR VALVE BOX EA
40970	Jackson	1	NC107	FROM NC116 TO US23 BUSINESS	1	1.86	53	4369	2	35,043	20,906	3,646	4,923	24	467	1	32	1	3	2	50	40	13	3	1	1
TOTAL FOR PROJ NO. 40970						1.86		4369	2	35,043	20,906	3,646	4,923	24	467	1	32	1	3	2	50	40	13	3	1	1
GRAND TOTAL						1.86		4369	2	35,043	20,906	3,646	4,923	24	467	1	32	1	3	2	50	40	13	3	1	1

TYPICAL 1

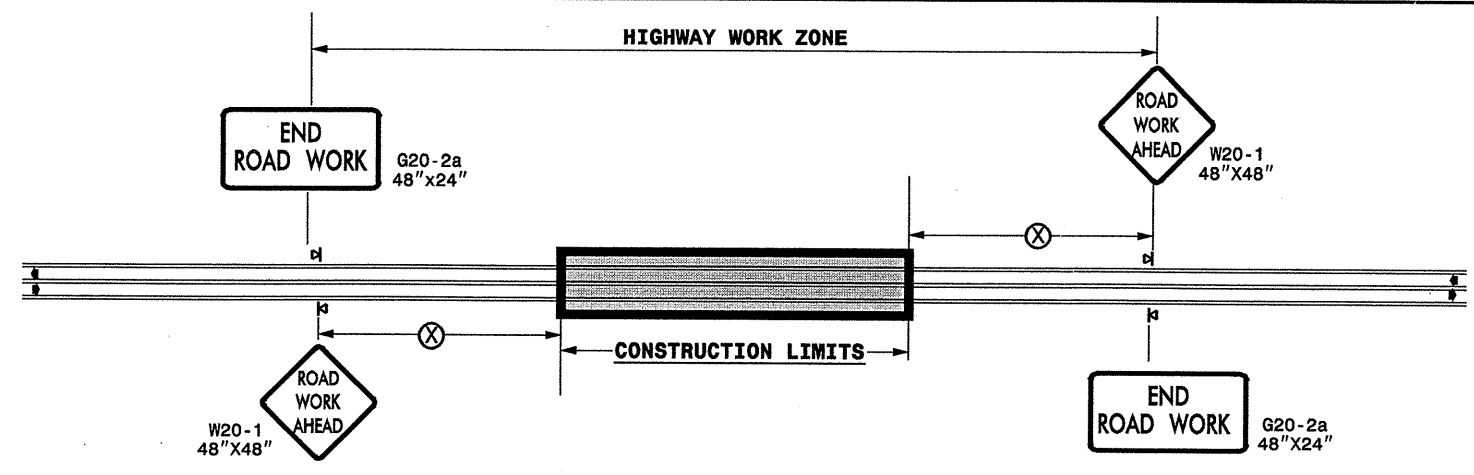


SURFACING SCHEDULE

ITEM NO	DESCRIPTION
C1	ASPHALT CONCRETE SURFACE COURSE, TYPE S9.5B, AT AN AVERAGE RATE OF 168 LBS. PER SQ. YD. (1 1/2")
C2	ASPHALT CONCRETE SURFACE COURSE, TYPE S9.5C, AT AN AVERAGE RATE OF 168 LBS. PER SQ. YD. (1 1/2")
D	ASPHALT CONCRETE INTERMEDIATE COURSE, TYPE I19.0B, AT AN AVERAGE RATE OF 342 LBS. PER SQ. YD. (3")
V1	MILLING ASPHALT PAVEMENT 1 1/2" IN DEPTH AS DIRECTED BY THE PROJECT ENGINEER.
V2	MILLING ASPHALT PAVEMENT 4 1/2" AS DIRECTED BY THE PROJECT ENGINEER.
V3	MILLING ASPHALT PAVEMENT 3" IN DEPTH & 4 ft. OR GREATER IN WIDTH IN DISTRESSED AREAS AS DIRECTED BY THE PROJECT ENGINEER.
R	REMOVAL OF ASPHALT MATERIAL FROM CONCRETE GUTTER.



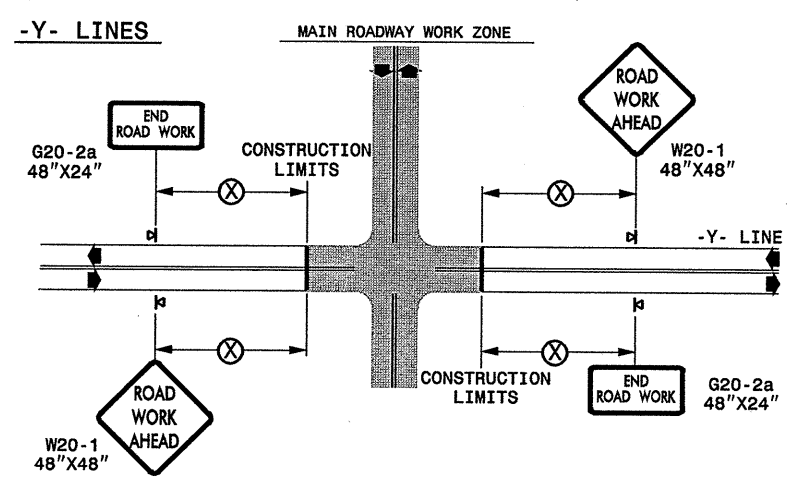
TWO-WAY UNDIVIDED ** (L-LINES)



POSTED SPEED LIMIT (M.P.H.)	RECOMMENDED MINIMUM SIGN SPACING
≤ 50	500'
≥ 55	1000'

STATE OF NORTH CAROLINA
 DEPT. OF TRANSPORTATION
 DIVISION OF HIGHWAYS
 RALEIGH, N.C.

ROADWAYS INTERSECTING ALONG 2 WAY UNDIVIDED WORK ZONE (Y-LINES)



GENERAL NOTES

- USE FLUORESCENT ORANGE SHEETING (TYPE VII OR HIGHER) ON ALL ADVANCED WORK ZONE SIGNS.
- DO NOT INSTALL ADVANCE WARNING SIGNS MORE THAN 3 DAYS PRIOR TO BEGINNING OF WORK.
- ALL SIGN SPACING DIMENSIONS ARE APPROXIMATE, FIELD ADJUST AS NECESSARY OR AS DIRECTED.
- USE PORTABLE WORK ZONE SIGNS ONLY WITH PORTABLE WORK ZONE SIGN STANDS SPECIFICALLY DESIGNED FOR ONE ANOTHER. PORTABLE WORK ZONE SIGNS MAY BE ROLL UP OR APPROVED COMPOSITE.
- PROVIDE PORTABLE WORK ZONE SIGN STANDS, PORTABLE SIGNS AND SIGN SHEETING WHICH ARE LISTED ON THE NORTH CAROLINA DEPARTMENT OF TRANSPORTATION'S APPROVED PRODUCT LIST OR ACCEPTED AS TRAFFIC QUALIFIED BY THE TRAFFIC CONTROL UNIT.
- ** TWO-WAY UNDIVIDED ADVANCE WARNING SIGN CONFIGURATION MAY BE USED ON URBAN MULTI-LANE FACILITIES WHERE CONDITIONS LIMIT THE USE OF DUAL MOUNTED SIGNS AS DETERMINED BY THE ENGINEER.


LEGEND

◀ PORTABLE SIGN

➡ DIRECTION OF TRAFFIC FLOW

DETAIL DRAWING
 FOR TWO-WAY UNDIVIDED
 WORK ZONE WARNING SIGNS

SHEET 1 OF 1

APPROVED: _____	DATE: _____	DETAIL DRAWING FOR TWO-WAY UNDIVIDED ADVANCED WORK ZONE WARNING SIGNS	
SEAL	SCALE: NONE	REVISIONS	
	DATE: _____	7-98	10/01
	DWG. BY: _____	10-98	03/04
	DESIGN BY: _____	01/01	11/04
REVIEWED BY: _____	QA/QC FILE		

30-OCT-2006 15:35
 \\DOT\DP\SR001\DOT\GROUPS-W\T\CCC\designgroup4\resurfacing\resurfacing2006\div14_40970\jackson\40970_2wayundivurbfrwys\july2006.dgn
 peeymore AT WZ1C206421