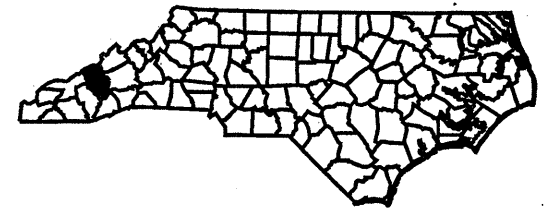
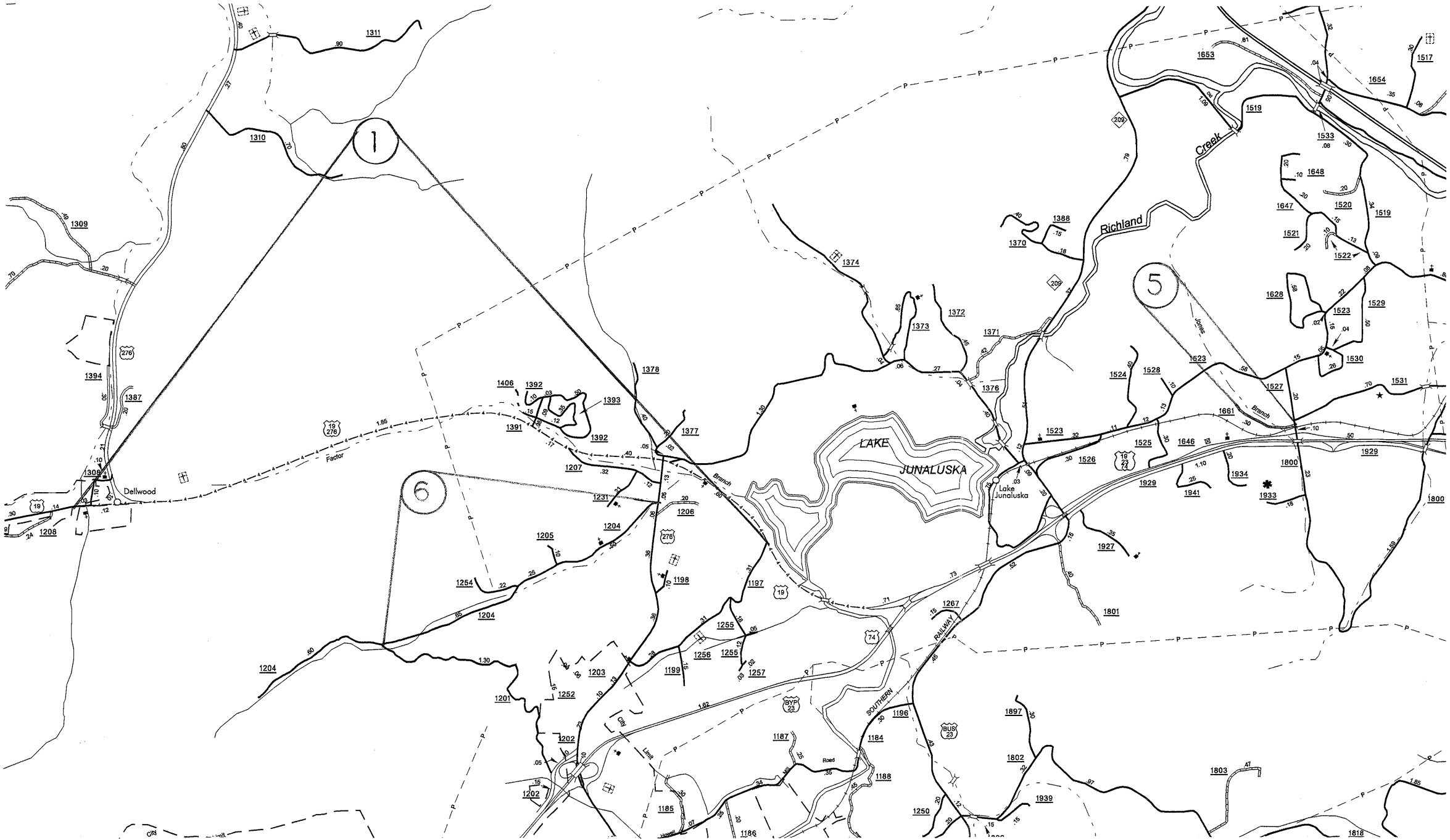


HAYWOOD COUNTY

NORTH CAROLINA

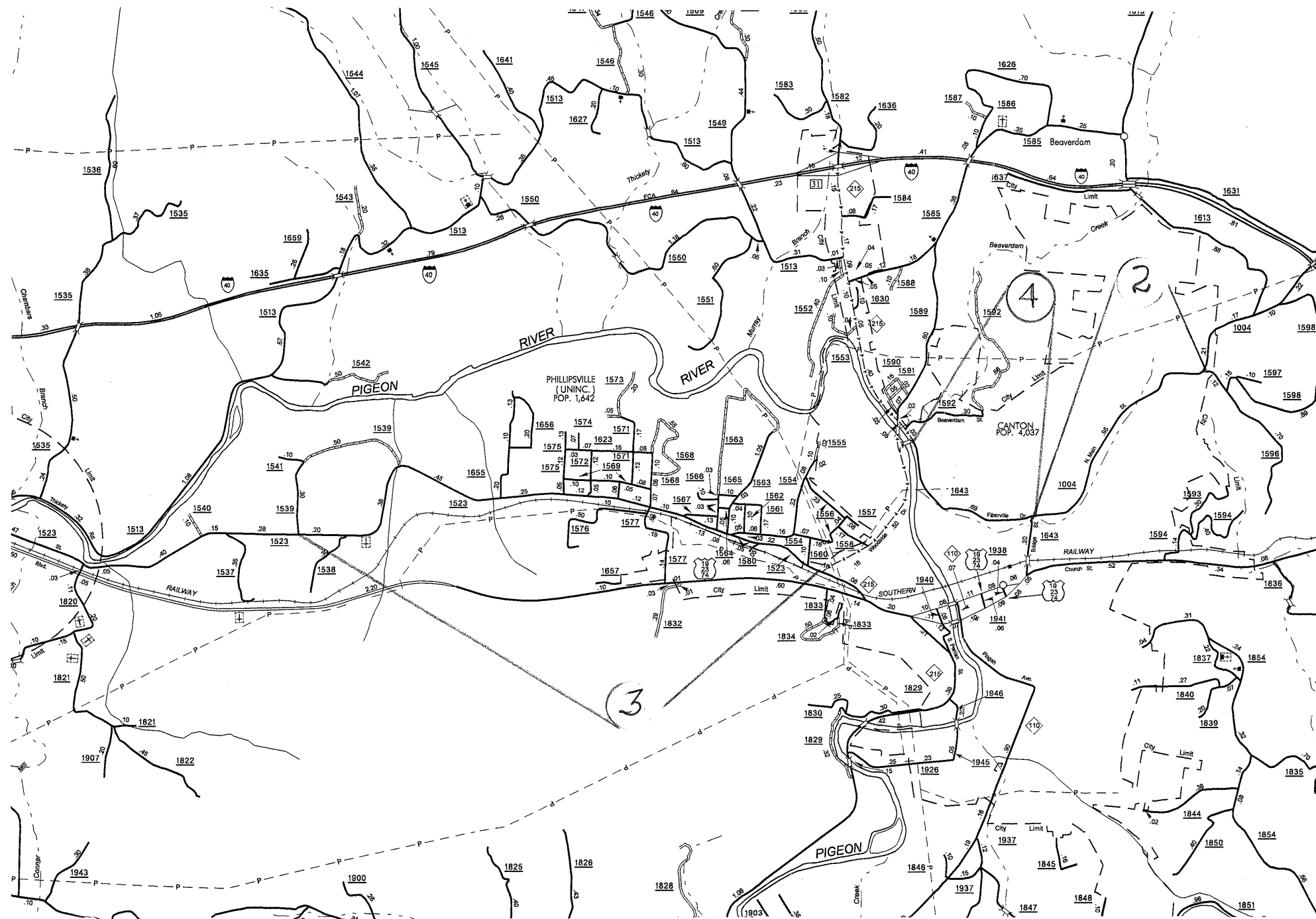
PROJECT REFERENCE NO.		SHEET NO.	
14CR.10441.3		1 of 7	
STATE PROJECT	F.A.PROJECT NO.	DESCRIPTION	
14CR.10441.3			
14CR.20441.3			



HAYWOOD COUNTY

NORTH CAROLINA

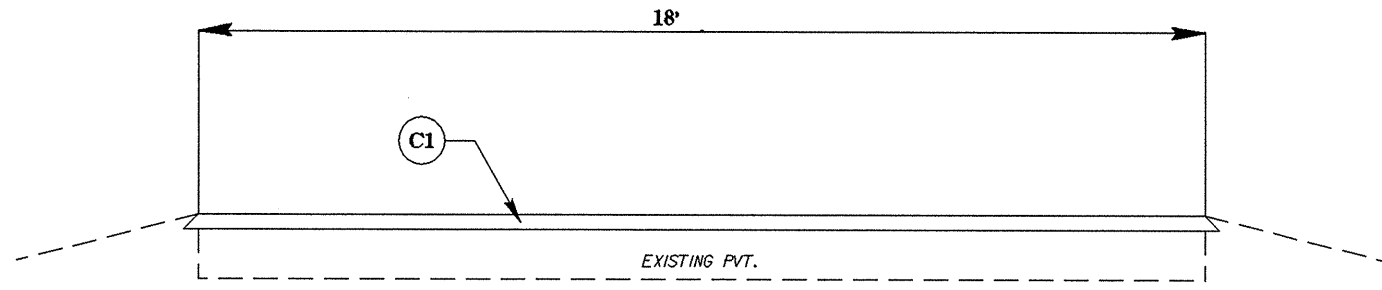
PROJECT REFERENCE NO.		SHEET NO.	
14CR.10441.2		2 of 7	
STATE PROJECT	F.A.PROJECT NO.	DESCRIPTION	
14CR.10441.2			



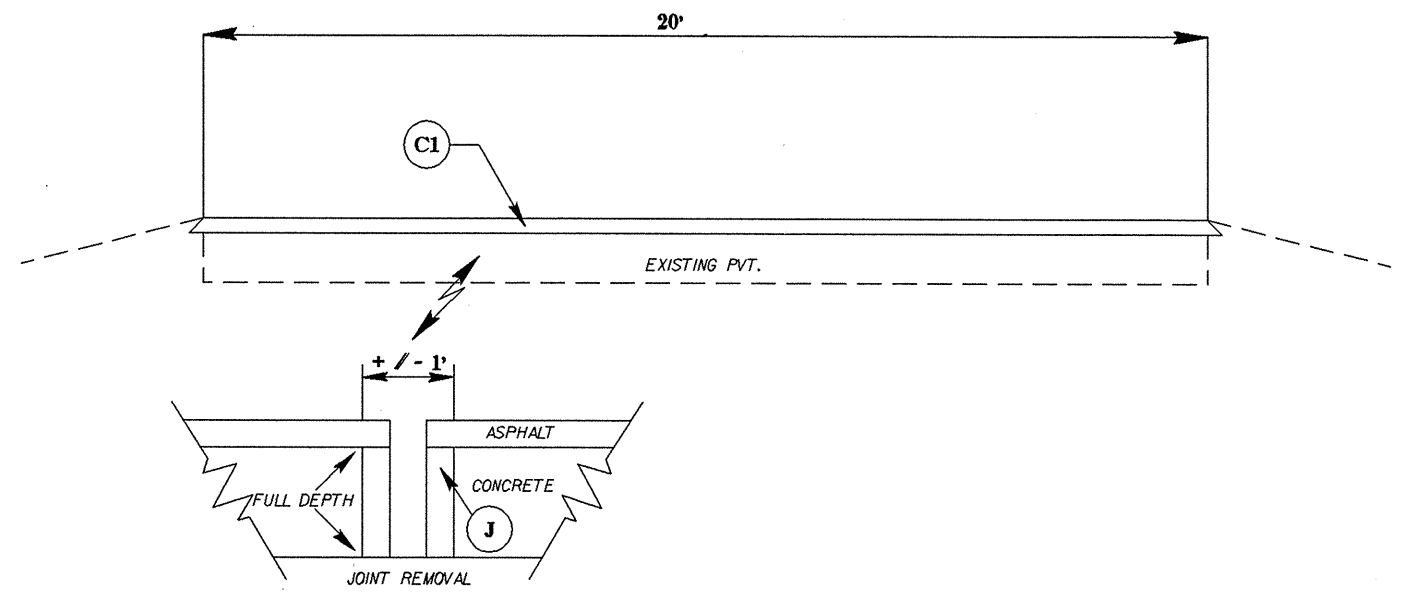
050197

PROJECT REFERENCE NO.		SHEET NO.
14CR10441.3		3 OF 7
STATE PROJECT	F.A. PROJECT NO.	DESCRIPTION
14CR10441.3		
14CR20441.3		

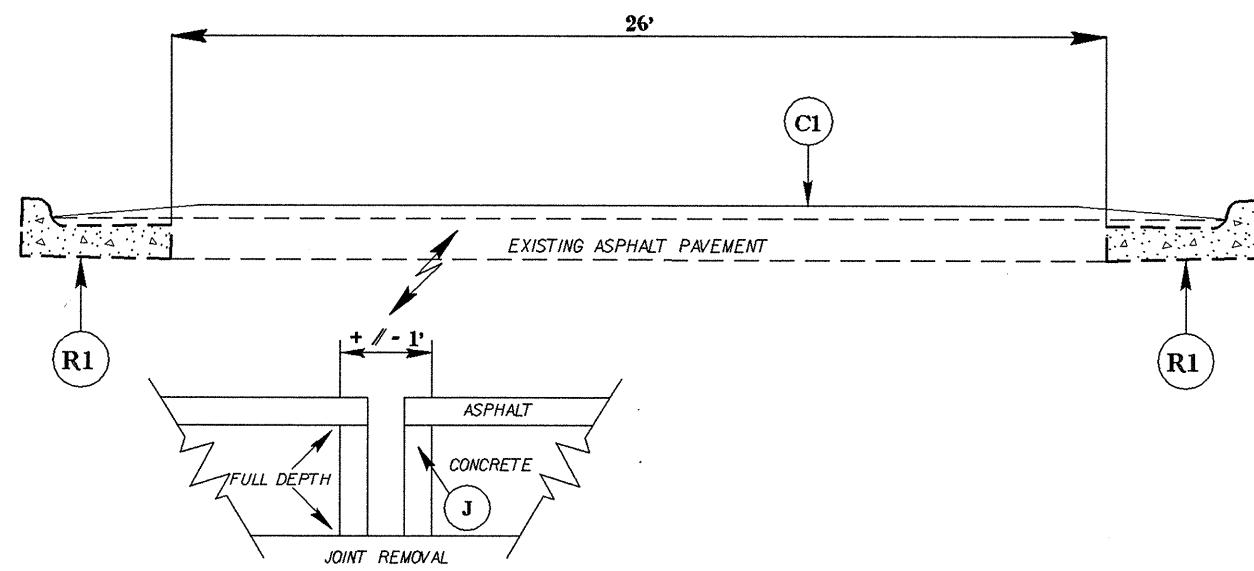
TYPICAL 1



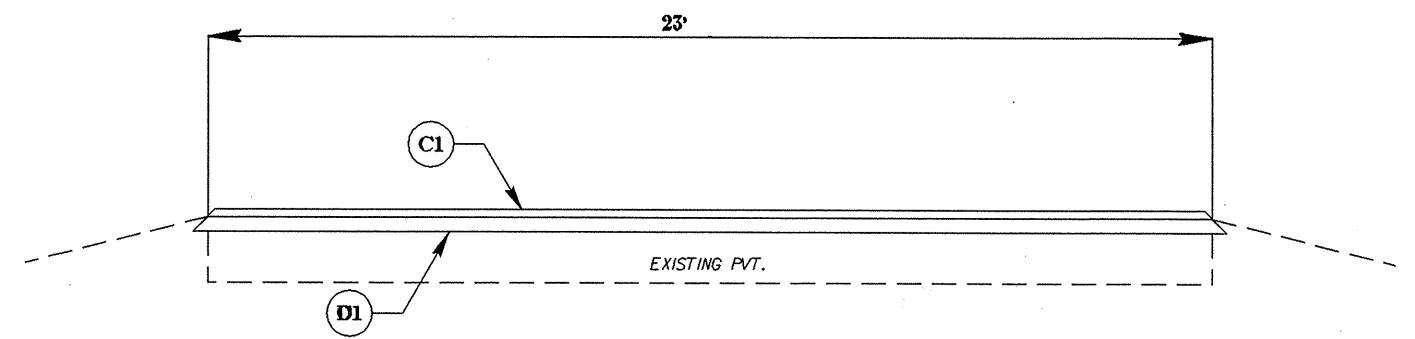
TYPICAL 2



TYPICAL 3



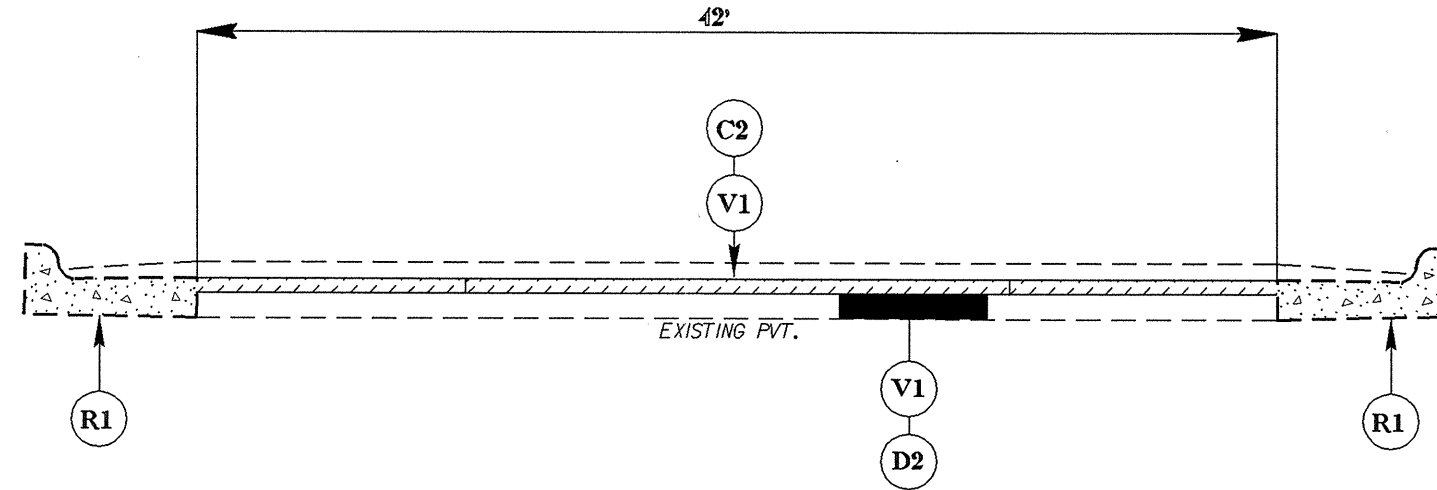
TYPICAL 4



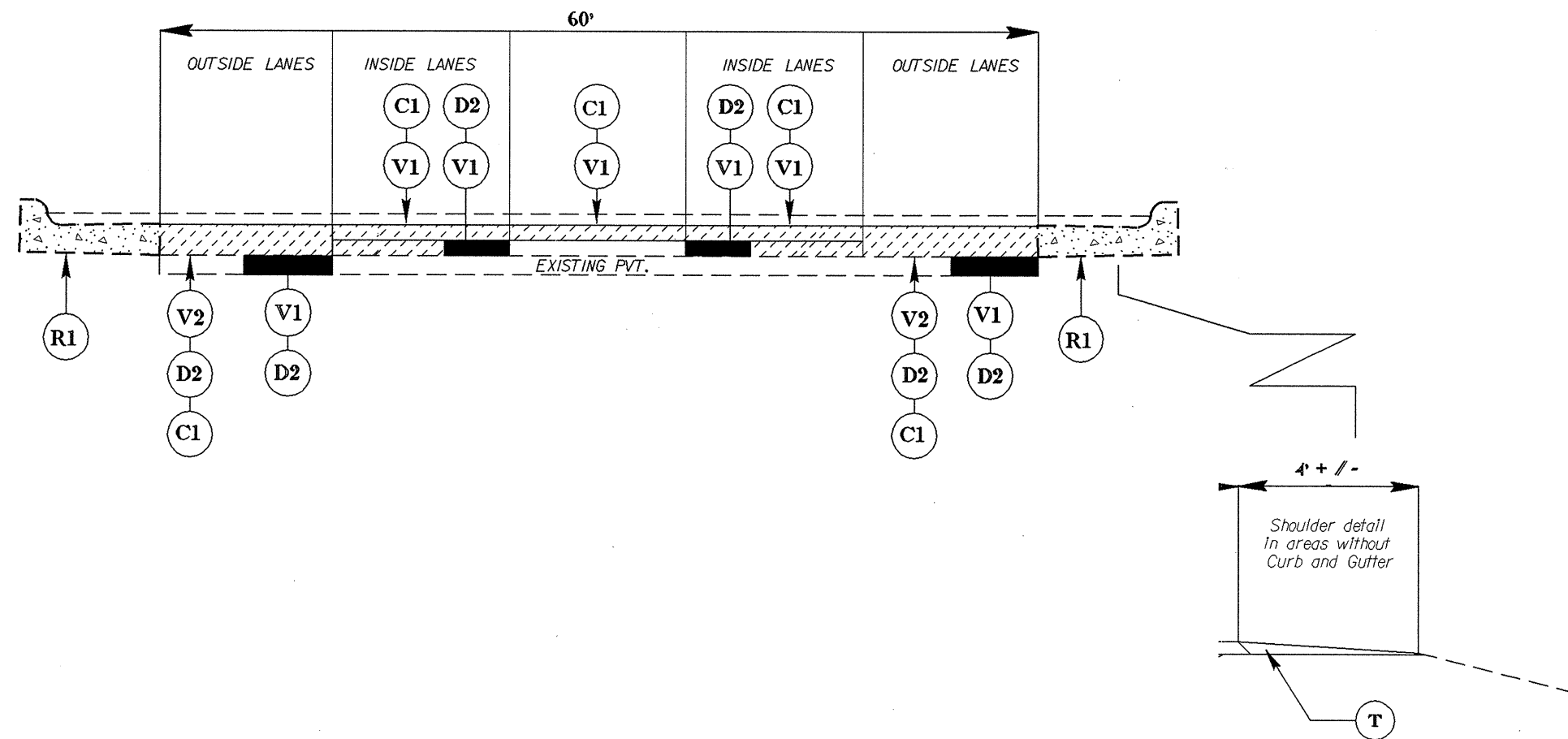
050197

PROJECT REFERENCE NO.		SHEET NO.
14CR10441.3		4 OF 7
STATE PROJECT	F.A. PROJECT NO.	DESCRIPTION
14CR10441.3		
14CR20441.3		

TYPICAL 5



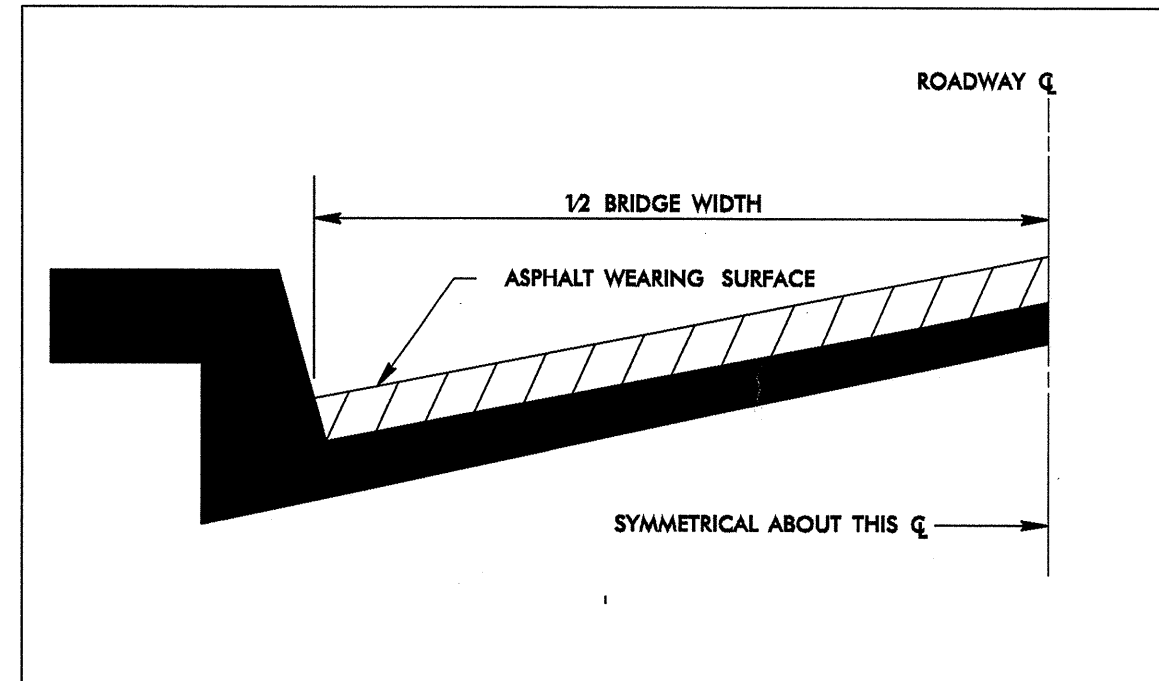
TYPICAL 6



SURFACING SCHEDULE

ITEM NO	DESCRIPTION
C1	ASPHALT CONCRETE SURFACE COURSE, TYPE S9.5B, AT AN AVERAGE RATE OF 168 LBS. PER SQ. YD. (1 1/2")
C2	ASPHALT CONCRETE SURFACE COURSE, TYPE S9.5B, AT AN AVERAGE RATE OF 224 LBS. PER SQ. YD. (2")
D1	ASPHALT CONCRETE INTERMEDIATE COURSE, TYPE I19.0B, AT AN AVERAGE RATE OF 285 LBS. PER SQ. YD. (2 1/2")
D2	ASPHALT CONCRETE INTERMEDIATE COURSE, TYPE I19.0B, AT AN AVERAGE RATE OF 342 LBS. PER SQ. YD. (3")
J	CONCRETE JOINT REPAIR - SEE SPECIAL PROVISIONS
R1	EXISTING CURB AND GUTTER
T	SHOULDER CONSTRUCTION WITH ABCM - SEE SPECIAL PROVISIONS
V1	MILLING ASPHALT PAVEMENT 3" IN DEPTH AS DIRECTED BY THE PROJECT ENGINEER.
V2	MILLING ASPHALT PAVEMENT 6" IN DEPTH AS DIRECTED BY THE PROJECT ENGINEER.

PROJECT REFERENCE NO.		SHEET NO.
14CR10441.3		5 OF 7
STATE PROJECT	F.A. PROJECT NO.	DESCRIPTION
14CR10441.3		
14CR20441.3		

**BRIDGE HALF TYPICAL SECTION**

FOR BRIDGES WITH FLOOR DRAINS, CARE SHALL BE EXERCISED IN PLACING THE WEARING SURFACE AROUND FLOOR DRAINS SO AS NOT TO HINDER EFFECTIVE DRAINAGE. ALL DRAINS SHALL BE LEFT OPEN.

THE PROPOSED WEARING SURFACE SHALL VARY IN THICKNESS AS NECESSARY TO PROVIDE A SMOOTH RIDING SURFACE. A THICKNESS OF NOT LESS THAN 5/8" SHALL BE PROVIDED. THE MAXIMUM THICKNESS SHALL PREFERABLY BE 1-1/2" UNLESS IT IS IMPRACTICAL TO PROVIDE A SMOOTH RIDING SURFACE OTHERWISE.

NOTES

ALL UNPAVED S.R. ROADS TO BE RESURFACED 50' FROM EDGE OF PAVEMENT OF MAIN PROJECT.
 ALL PAVED S.R. ROADS TO BE RESURFACED TO THE ENDS OF THE RADII, OR AS DIRECTED BY THE ENGINEER.
 EDGES, PAVEMENT WIDENING, INTERSECTIONS AND BRIDGE FLARES ARE INCLUDED IN THE TABLE OF QUANTITIES.
 BRIDGES TO BE RESURFACED AT LOCATIONS AND TO DEPTH AS DIRECTED BY THE ENGINEER.

PROJECT NO.	SHEET NO.	TOTAL NO.
14CR.10441.3, 14CR.20441.3	6	7

SUMMARY OF QUANTITIES

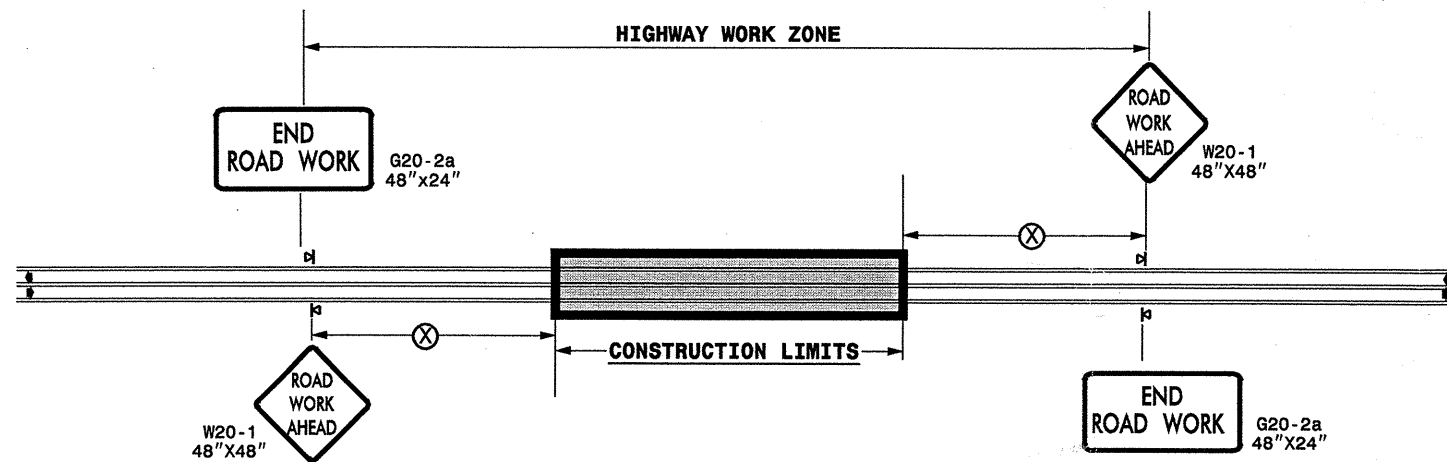
PROJECT NO	COUNTY	MAP NO	ROUTE	DESCRIPTION	TYP NO	LENGTH MI	WIDTH FT	SHOULDER RECONSTRUCTION SMI	3" MILLING SY	6" MILLING SY	INTERMEDIATE COURSE, 119.0B TONS	SURFACE COURSE, S9.5B TONS	PG 64-22 PLANT MIX TONS	CONCRETE JOINT REPAIR SY	6" CONCRETE DRIVEWAYS SY	CATCH BASIN EA	MANHOLES EA	METER OR VALVE BOX EA
14CR.10441.3	Haywood	1	US19	FROM PVMT CHNG 0.26 MI. WEST OF US276 TO SR1197	6	3.25	64	0.88	96,939	53,323	10,313	11,301	1,163		212			
TOTAL FOR PROJ NO. 14CR.10441.3						3.25		0.88	96,939	53,323	10,313	11,301	1,163		212			
14CR.20441.3	Haywood	2	SR1004	FROM SR1643 TO SR1596	3	0.97	26					1,305	78	50		13	22	2
		3	SR1523	FROM SR1539 TO NC215	2	1.75	20					1,811	109	22			5	
		4	SR1643	FROM SR1004 TO NC215	5	0.77	42		23,401		795	2,231	171				14	6
		5	SR1661	FROM SR1527 TO DEAD END	4	0.29	23				585	345	48			1	5	
		6	SR1204	FROM US276 TO SR1201	1	1.35	18					1,257	75					
TOTAL FOR PROJ NO. 14CR.20441.3						5.13			23,401		1,380	6,949	481	72		14	46	8
GRAND TOTAL						8.38		0.88	120,340	53,323	11,693	18,250	1,644	72	212	14	46	8

PROJECT NO.	SHEET NO.	TOTAL NO.
14CR.10441.3, 14CR.20441.3	7	7

THERMOPLASTIC AND PAINT QUANTITIES

PROJECT NO	COUNTY	MAP NO	ROUTE	DESCRIPTION	4810000000-E		4847000000-E		4847110000-E	484714000-E	4847220000-N	4847220000-N
					4" WHITE PAINT LF	4" YELLOW PAINT LF	4" X 20M WHITE POLYUREA LINES LF	4" X 20M YELLOW POLYUREA LINES LF	8" X 20M WHITE POLYUREA LINES LF	24" X 20M WHITE POLYUREA LINES LF	POLYUREA LT ARROW 20 M EA	POLYUREA RT ARROW 20M EA
14CR.10441.3	Haywood	1	US19	FROM PVMT CHNG 0.26 MI. WEST OF US276 TO SR1197	52,162	50,922	52,162	50,926	772	236	52	4
TOTAL FOR PROJ NO. 14CR.10441.3					52,162	50,922	52,162	50,926	772	236	52	4
					103,084		103,088					
14CR.20441.3	Haywood	2	SR1004	FROM SR1643 TO SR1596								
		3	SR1523	FROM SR1539 TO NC215								
		4	SR1643	FROM SR1004 TO NC215								
		5	SR1661	FROM SR1527 TO DEAD END								
		6	SR1204	FROM US276 TO SR1201								
TOTAL FOR PROJ NO. 14CR.20441.3												
GRAND TOTAL					52,162	50,922	52,162	50,926	772	236	52	4
					103,084		103,088					

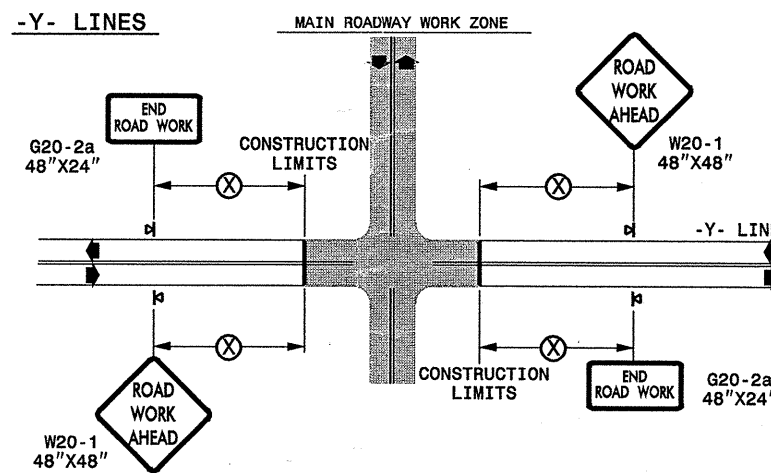
TWO-WAY UNDIVIDED ** (L-LINES)



POSTED SPEED LIMIT (M.P.H.)	RECOMMENDED MINIMUM SIGN SPACING
≤ 50	500'
≥ 55	1000'

STATE OF NORTH CAROLINA
DEPT. OF TRANSPORTATION
DIVISION OF HIGHWAYS
RALEIGH, N.C.

ROADWAYS INTERSECTING ALONG 2 WAY UNDIVIDED WORK ZONE (Y-LINES)



GENERAL NOTES

- USE FLUORESCENT ORANGE SHEETING (TYPE VII OR HIGHER) ON ALL ADVANCED WORK ZONE SIGNS.
- DO NOT INSTALL ADVANCE WARNING SIGNS MORE THAN 3 DAYS PRIOR TO BEGINNING OF WORK.
- ALL SIGN SPACING DIMENSIONS ARE APPROXIMATE, FIELD ADJUST AS NECESSARY OR AS DIRECTED.
- USE PORTABLE WORK ZONE SIGNS ONLY WITH PORTABLE WORK ZONE SIGN STANDS SPECIFICALLY DESIGNED FOR ONE ANOTHER. PORTABLE WORK ZONE SIGNS MAY BE ROLL UP OR APPROVED COMPOSITE.
- PROVIDE PORTABLE WORK ZONE SIGN STANDS, PORTABLE SIGNS AND SIGN SHEETING WHICH ARE LISTED ON THE NORTH CAROLINA DEPARTMENT OF TRANSPORTATION'S APPROVED PRODUCT LIST OR ACCEPTED AS TRAFFIC QUALIFIED BY THE TRAFFIC CONTROL UNIT.
- ** TWO-WAY UNDIVIDED ADVANCE WARNING SIGN CONFIGURATION MAY BE USED ON URBAN MULTI-LANE FACILITIES WHERE CONDITIONS LIMIT THE USE OF DUAL MOUNTED SIGNS AS DETERMINED BY THE ENGINEER.

LEGEND	
	PORTABLE SIGN
	DIRECTION OF TRAFFIC FLOW

DETAIL DRAWING
FOR TWO-WAY UNDIVIDED
WORK ZONE WARNING SIGNS

SHEET 1 OF 1

APPROVED:	DATE:	DETAIL DRAWING FOR TWO-WAY UNDIVIDED ADVANCED WORK ZONE WARNING SIGNS	
SEAL	SCALE:	NONE	REVISIONS
	DATE:	7-98	10/01
	DWG. BY:	10-98	03/04
	DESIGN BY:	01/01	11/04
REVIEWED BY:			



18-OCT-2006 17:26
 \\DOT\DFSR001\GROUPOS-WZTCCC\design\group4\common4\resurfacing\resurfacing2006\div14\Hcr104413et chadywood\Hcr104413.2wayundivurbfr.wys\July2006.dgn
 psey@more AT WZTCCC