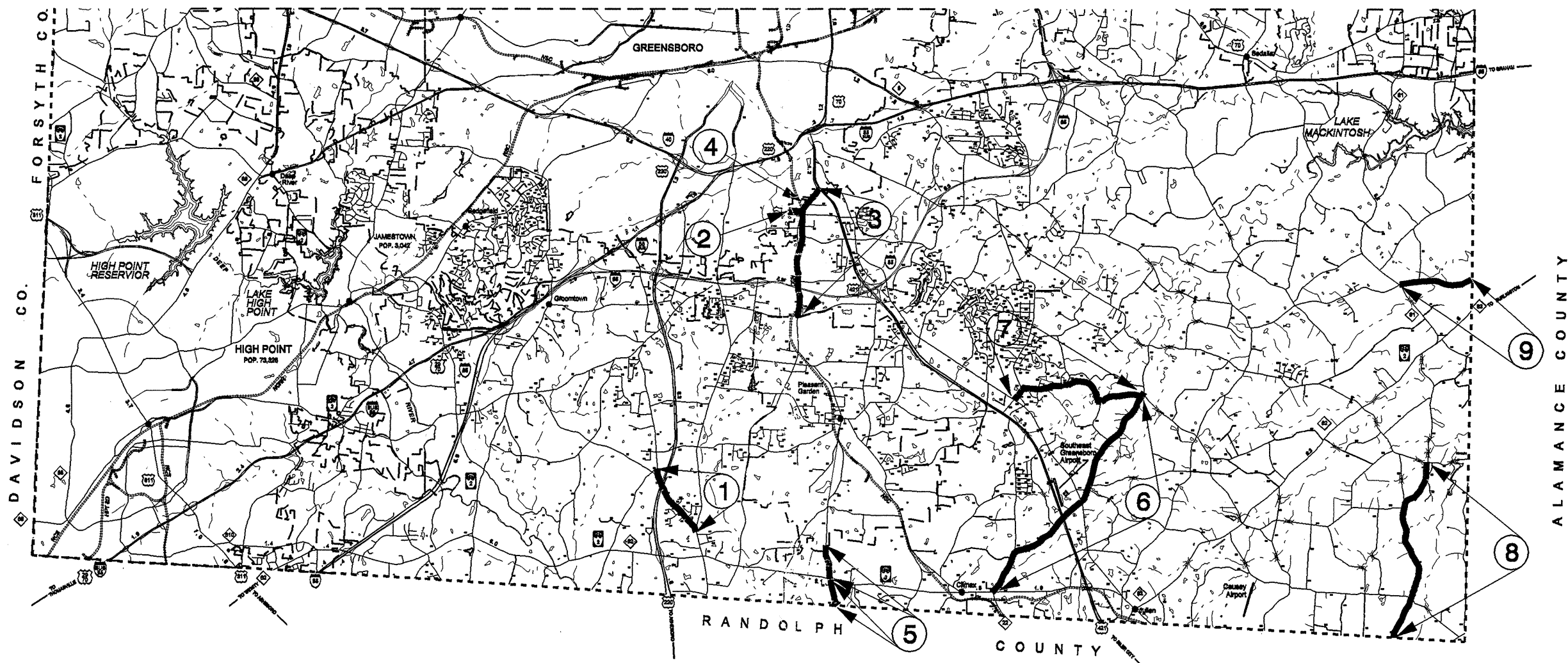
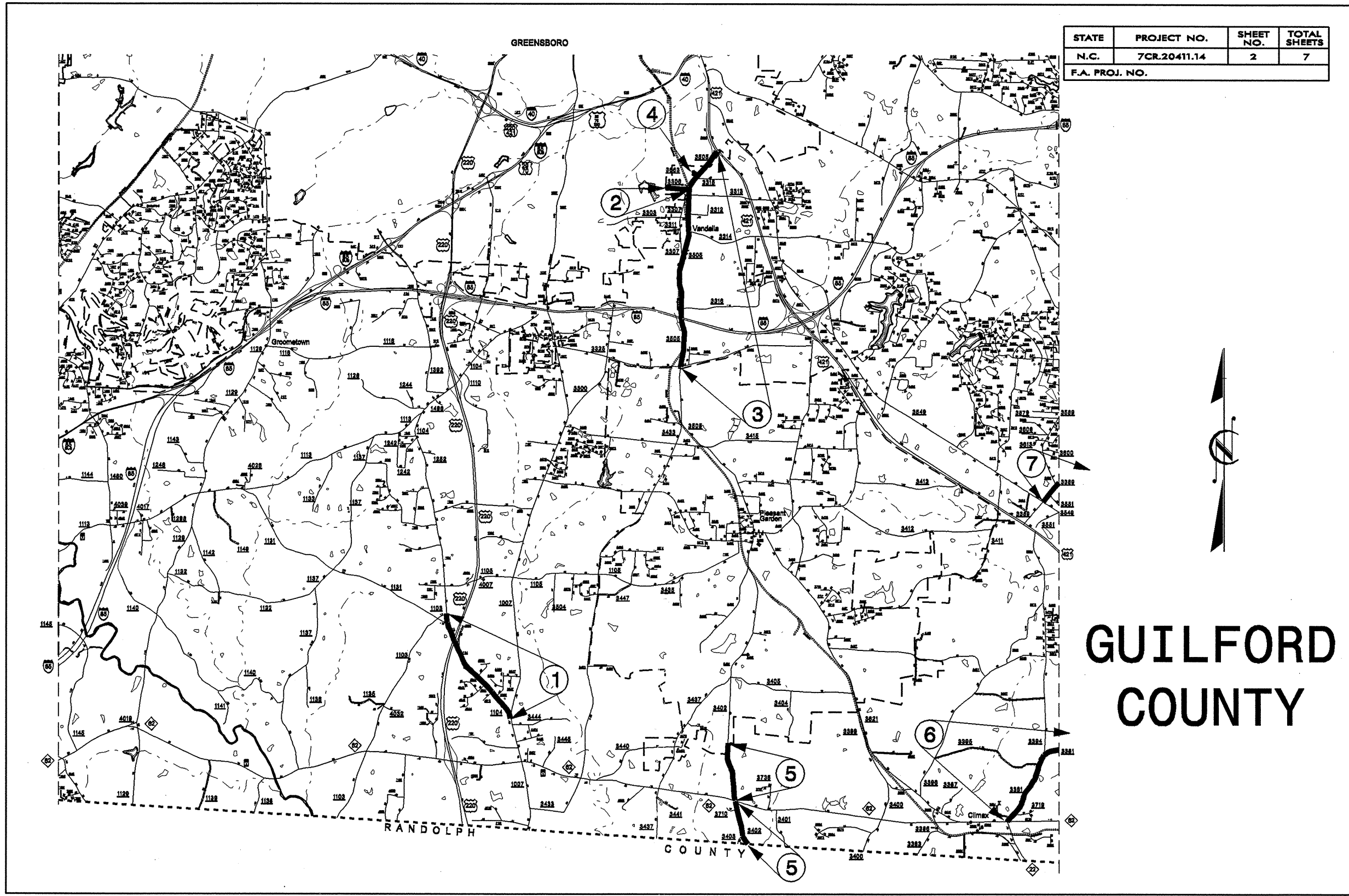


GUILFORD COUNTY

STATE	PROJECT NO.	SHEET NO.	TOTAL SHEETS
N.C.	7CR.20411.14	1	7
F.A. PROJ. NO.			

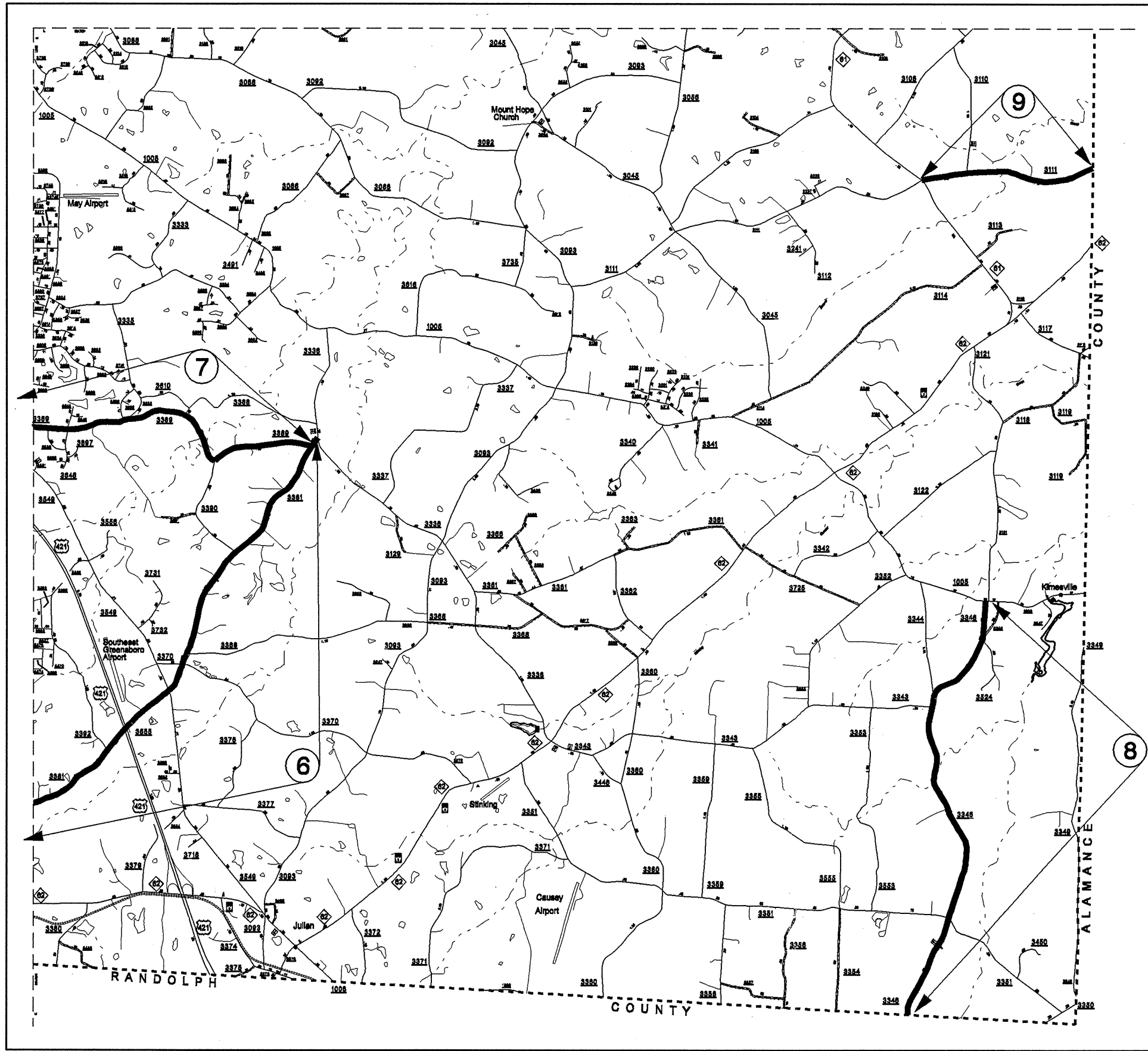


STATE	PROJECT NO.	SHEET NO.	TOTAL SHEETS
N.C.	7CR.20411.14	2	7
F.A. PROJ. NO.			



**GUILFORD
COUNTY**

STATE	PROJECT NO.	SHEET NO.	TOTAL SHEETS
N.C.	7CR.20411.14	3	7
F.A. PROJ. NO.			



GUILFORD COUNTY

SUMMARY OF QUANTITIES

PROJECT NO.	SHEET NO.	TOTAL NO.
7CR.20411.14	4	7

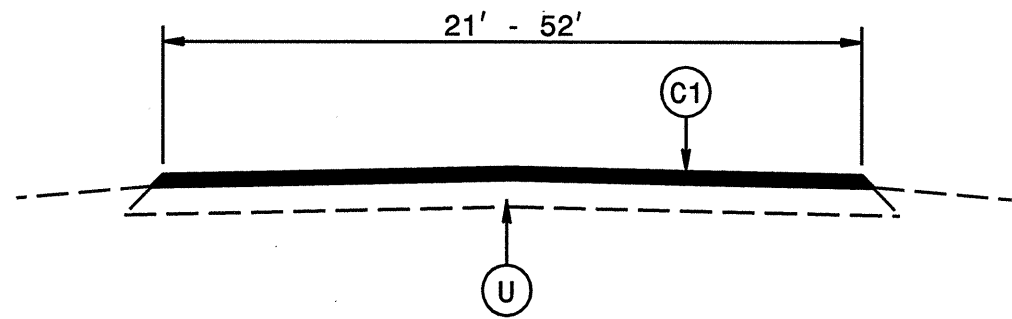
PROJECT NO	COUNTY	MAP NO	ROUTE	DESCRIPTION	TYP NO	LENGTH	WIDTH	INCIDENTAL STONE BASE	SHOULDER RECONSTRUCTION	1 1/4" MILLING	1 1/2" MILLING	0" TO 1.5" MILLING	INCIDENTAL MILLING	BASE COURSE, B25.0B TONS	SURFACE COURSE, S9.5B TONS	SURFACE COURSE, SF9.5A TONS	LEVELING COURSE, TYPE SF9.5A TON	PG 64-22 PLANT MIX TONS	AST MAT COAT, 78M SY	ADJ. OF MANHOLES EA	SEED & MULCHING AC	RESIDENTIAL SEEDING AC				
						MI	FT	TONS	SMI	SY	SY	SY	SY	TONS	TONS	TONS	TONS	TONS	TONS	TONS	TONS	TONS	TONS	TONS	TONS	
7CR.20411.14	Guilford	1	SR 1104 (OLD RANDLEMAN ROAD)	FROM JOINT NORTH OF SR 1007 (RANDLEMAN ROAD) TO JOINT NORTH OF SR 1103 (COLETRANE MILL ROAD)	1	0.05	22-24	140						500		47.44			2.85							
					1	0.82	22											824.35			49.46					
					1	0.03	22-26												29.70			1.78				
					1	0.21	26-28												253.75			15.22				
					1	0.01	28-38												13.59			0.82				
					1	0.01	38												15.65			0.94				
					1	0.01	38-52												18.52			1.11				
					1	0.03	52						1,219						64.19			3.85				
					1	0.01	38-52												18.52			1.11				
					1	0.01	38												15.65			0.94				
					1	0.01	29-38												13.80			0.83				
					1	0.27	27-29												331.62			19.90				
					1	0.02	24-27												41.03			2.46				
					TOTAL FOR MAP NO. 1						1.49		140		1,219			500	1,687.81			101.27				
"	"	2	SR 3306 (EAST MONTCASTLE DRIVE)	FROM SR 3307 (RIVERDALE ROAD) TO BEGIN CURB & GUTTER AT GREENBORO SCL	2	0.265	20	50								171.73		10.30								
"	"	3	SR 3505 (PLEASANT GARDEN ROAD)	FROM NEW JOINT SOUTH OF SR 3325 (RITTERS LAKE ROAD) TO JOINT AT US 421	3	0.03	22-26	165	2.46		485		244		75.67			4.54			0.64	0.55				
					3	0.55	22										599.68			35.98						
					3	0.059	24											105.14			6.31					
					3	1.065	22-22.5											1,236.94			74.22					
					3	0.039	22.5-33											53.67			3.22					
					3	0.072	33											182.53			10.95					
					3	0.052	22-33											70.79			4.25					
					3	0.741	22											926.93			55.62		1			
					3	0.039	22-25											45.41			2.72					
TOTAL FOR MAP NO. 3						2.647		165	2.46	0	485		244	3,296.76			197.81		1	0.64	0.55					
"	"	4	SR 3663 (DIAMOND HILL COURT)	FROM SR 3505 (PLEASANT GARDEN ROAD) TO CUL-DE-SAC	4	0.044	26					806			56.65			3.40	460.00							
					4	0.02	26-28										26.73			1.60	232.00					
					4	0.024	28										85.26			5.12	478.00					
TOTAL FOR MAP NO. 4						0.088		0		0	0	806		168.64		10.12	1,170.00									
"	"	5	SR 3402 (HUNT ROAD)	FROM RANDOLPH COUNTY LINE TO NEW JOINT SOUTH OF NC 62, FROM NEW JOINT NORTH OF NC 62 TO PLEASANT GARDEN SCL	3	0.425	19	100	1.02						440.55			26.43			0.25	0.25				
					3	0.607	20										602.00			36.12						
TOTAL FOR MAP NO. 5						1.032		100	1.02	0	0	0		1,042.55			62.55			0.25	0.25					
"	"	6	SR 3381 (MONNETT ROAD)	FROM NC 62 TO SR 3336 (COBLE CHURCH ROAD)	3	0.013	21-23.5	560	4.92				400		14.49			0.87			1.19	1.19				
					3	1.821	20-21										1,930.86			115.85						
					3	0.024	20-24											46.17			2.77					
					3	0.2	24											237.78			14.27					
					3	0.077	24											91.54			5.49					
					3	0.047	20-24											51.25			3.07					
					3	0.247	20											244.96			14.70					
					3	0.079	20-26											90.03			5.40					
					3	2.51	19-19.5											2,562.73			153.76					
TOTAL FOR MAP NO. 6						5.018		560	4.92	0	0	0	400	5,269.81			316.18			1.19	1.19					
"	"	7	SR 3389 (WOODY MILL ROAD)	FROM SR 3381 (MONNETT ROAD) TO SR 3549 (LIBERTY ROAD)	3	0.038	20.8-25	195	2.84						43.30			2.60			0.92	0.46				
					3	2.828	20.5										3,194.38			191.66						
					3	0.008	20.5-24.5											8.92			0.54					
					3	0.013	24.5-62											27.82			1.67					
TOTAL FOR MAP NO. 7						2.887		195	2.84	0	0	0		3,274.42			196.47			0.92	0.46					
"	"	8	SR 3346 (KIMESVILLE ROAD)	FROM SR 1005 (ALAMANCE CHURCH ROAD) TO RANDOLPH COUNTY LINE	5	3.79	20.5-21	285	7.64					2,292		2,684.03	900.00	313.59			4.74	1.70				
					5	0.03	21-28										18		23.88	2.21						
TOTAL FOR MAP NO. 8						3.82		285	7.64	0	0	0		2,310		2,707.91	900.00	315.80			4.74	1.70				
"	"	9	SR 3111 (HOLT STORE ROAD)	FROM NC 61 TO THE ALAMANCE COUNTY LINE	1	1.48	21	60							1,302.68			78.16								
TOTAL FOR PROJ NO. 7CR.20411.14						18.727		1,555	18.88	1,219	485	806	1,144	2,310	16,043	2,880	900	1,289	1,170	1	7.74	4.15				
GRAND TOTAL						18.727		1,555	18.88	1,219	485	806	1,144	2,310	16,043	2,880	900	1,289	1,170	1	7.74	4.15				

PROJECT NO.	SHEET NO.	TOTAL NO.
7CR.20411.14	5	7

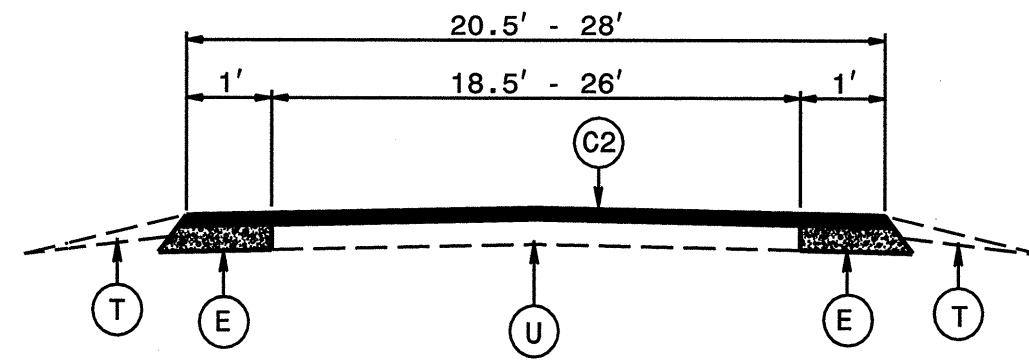
THERMOPLASTIC AND PAINT QUANTITIES

PROJECT NO	COUNTY	MAP NO	ROUTE	DESCRIPTION	4" X 90 M WHITE THERMO	4" X 120 M YELLOW THERMO	6" X 120 M WHITE THERMO	8" X 90 M YELLOW THERMO	16" X 120 M WHITE THERMO	24" X 120 M WHITE THERMO	THERMO RXR 120 M	THERMO MSG SCHOOL 120 M	THERMO LT ARROW 90 M	THERMO STR ARROW 90 M	THERMO STR & RT ARROW 90 M	4" YELLOW PAINT	4" WHITE PAINT
					LF	LF	LF	LF	LF	LF	EA	EA	EA	EA	EA	EA	EA
7CR.20411.14	Guilford	1	SR 1104 (OLD RANDLEMAN ROAD)	FROM JOINT NORTH OF SR 1007 (RANDLEMAN ROAD) TO JOINT NORTH OF SR 1103 (COLETRANE MILL ROAD)	700		88									26,900	30,000
"	"	2	SR 3306 (EAST MONTCASTLE DRIVE)	FROM SR 3307 (RIVERDALE ROAD) TO BEGIN CURB & GUTTER AT GREENBORO SCL					50	25	2					5,588	5,588
"	"	3	SR 3505 (PLEASANT GARDEN ROAD)	FROM NEW JOINT SOUTH OF SR 3325 (RITTERS LAKE ROAD) TO JOINT AT US 421	27,940	27,000	138	79	190	553	4	12	1	1	2		
"	"	4	SR 3663 (DIAMOND HILL COURT)	FROM SR 3505 (PLEASANT GARDEN ROAD) TO CUL-DE-SAC													
"	"	5	SR 3402 (HUNT ROAD)	FROM RANDOLPH COUNTY LINE TO NEW JOINT SOUTH OF NC 62, FROM NEW JOINT NORTH OF NC 62 TO PLEASANT GARDEN SCL	300		38									19,386	21,500
"	"	6	SR 3381 (MONNETT ROAD)	FROM NC 62 TO SR 3336 (COBLE CHURCH ROAD)	1,800		186			70						101,658	105,900
"	"	7	SR 3389 (WOODY MILL ROAD)	FROM SR 3381 (MONNETT ROAD) TO SR 3549 (LIBERTY ROAD)	1,000		184			100		12				58,155	59,976
"	"	8	SR 3346 (KIMESVILLE ROAD)	FROM SR 1005 (ALAMANCE CHURCH ROAD) TO RANDOLPH COUNTY LINE	900		108									75,803	79,748
"	"	9	SR 3111 (HOLT STORE ROAD)	FROM NC 61 TO THE ALAMANCE COUNTY LINE	100		14									27,550	31,232
TOTAL FOR PROJ NO. 7CR.20411.14					32,740	27,000	756	79	240	748	6	24	1	1	2	315,040	333,944
											30		4			648,984	
GRAND TOTAL					32,740	27,000	756	79	240	748	6	24	1	1	2	315,040	333,944
											30		4			648,984	

STATE	PROJECT NO.	SHEET NO.	TOTAL SHEETS
N.C.	7CR.20411.14	6	7

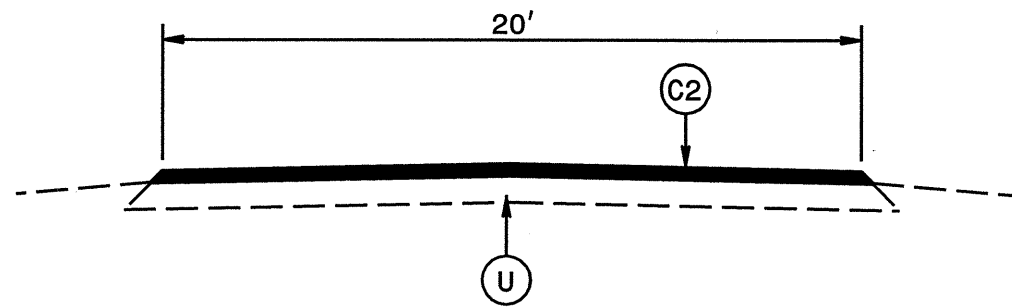


TYPICAL SECTION NO. 1



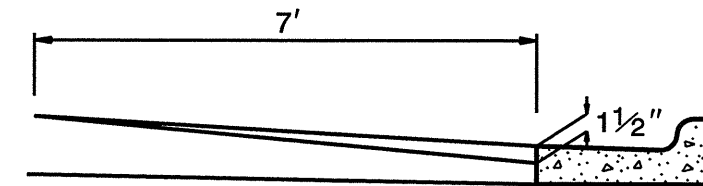
** LEVELING COURSE TO BE PLACED AT SPOTS AS DETERMINED BY THE COUNTY MAINTENANCE ENGINEER ON MAP 8

TYPICAL SECTION NO. 5

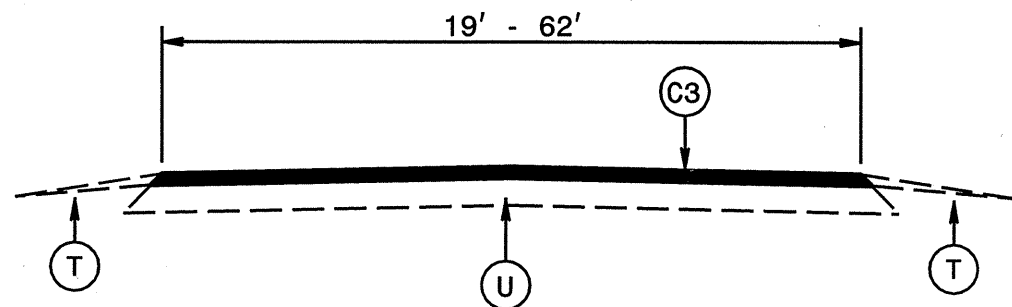


TYPICAL SECTION NO. 2

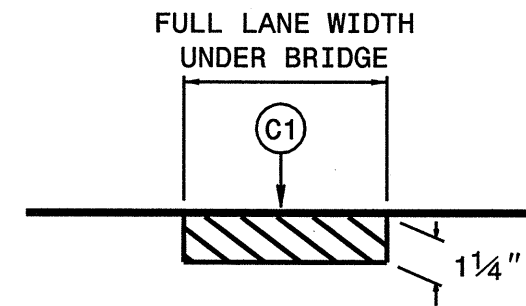
MILLING DETAIL 1



MILL EXISTING ASPHALT PAVEMENT 0-1 1/2" AT LOCATIONS AS DIRECTED BY THE ENGINEER

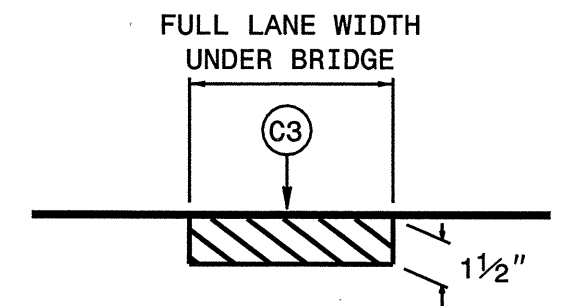


TYPICAL SECTION NO. 3



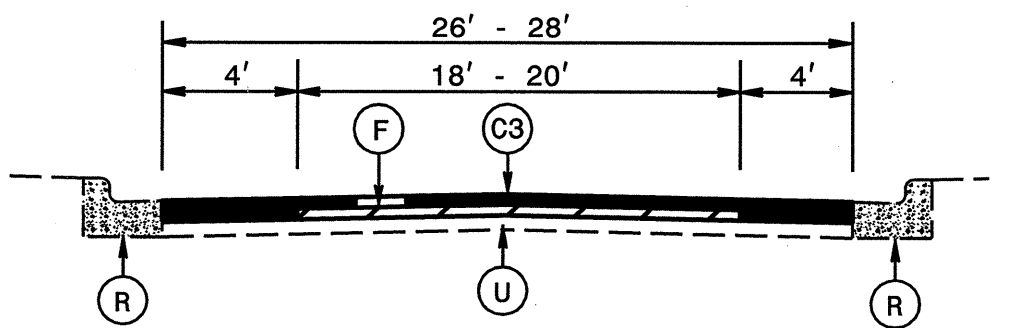
MILL EXISTING ASPHALT PAVEMENT 1 1/4" IN DEPTH TO BE USED ON MAP 1

MILLING DETAIL 2



MILL EXISTING ASPHALT PAVEMENT 1 1/2" IN DEPTH TO BE USED ON MAP 3

MILLING DETAIL 3



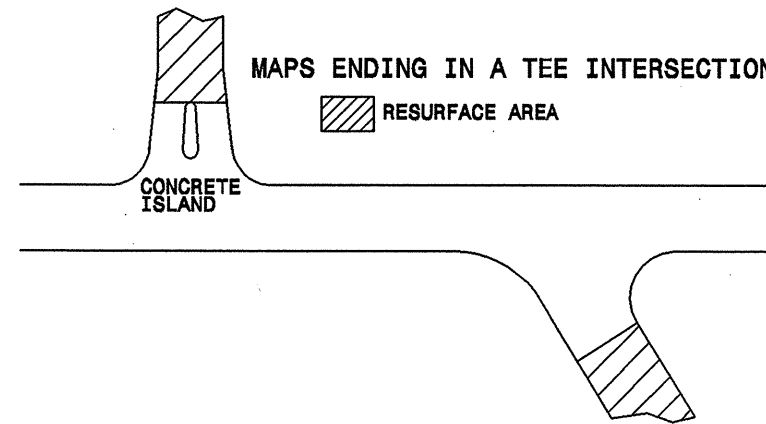
TYPICAL SECTION NO. 4

PAVEMENT SCHEDULE

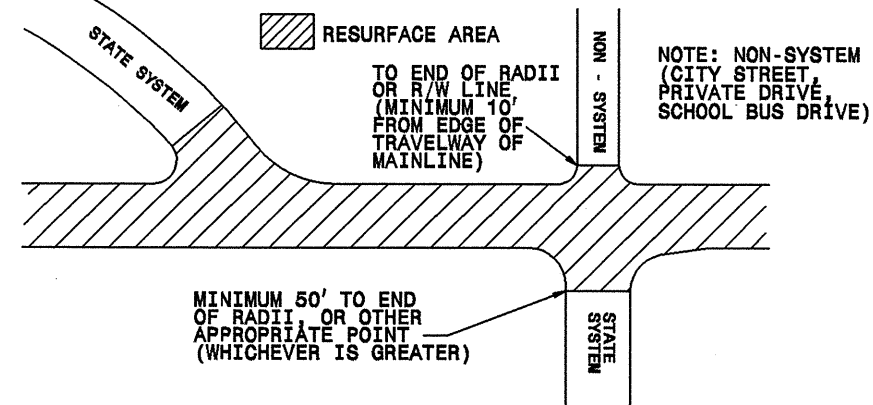
C1	PROP. APPROX. 1 1/4" ASPHALT CONCRETE SURFACE COURSE, TYPE S9.5B, AT AN AVERAGE RATE OF 140 LBS. PER SQ. YD.	F	AST MAT COAT, 78M
C2	PROP. APPROX. 1" ASPHALT CONCRETE SURFACE COURSE, TYPE SF9.5A, AT AN AVERAGE RATE OF 110 LBS. PER SQ. YD.	R	EXISTING 2-6 CURB AND GUTTER
C3	PROP. APPROX. 1 1/2" ASPHALT CONCRETE SURFACE COURSE, TYPE S9.5B, AT AN AVERAGE RATE OF 168 LBS. PER SQ. YD.	T	SHOULDER RECONSTRUCTION
E	PROP. APPROX. 7" ASPHALT CONCRETE BASE COURSE, TYPE B25.0B, AT AN AVERAGE RATE OF 399 LBS. PER SQ. YD. IN EACH OF TWO LAYER.	U	EXISTING PAVEMENT.

5/28/99

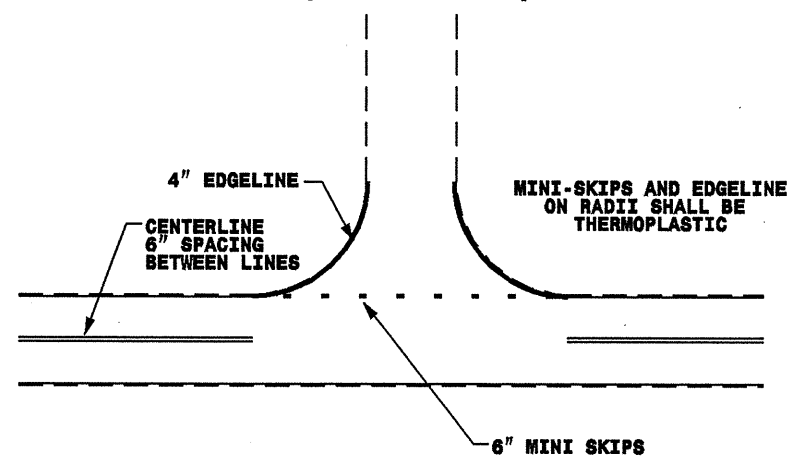
PAVING DETAIL 1 MAIN LINE IS NOT BEING RESURFACED



PAVING DETAIL 2 MAIN LINE IS BEING RESURFACED

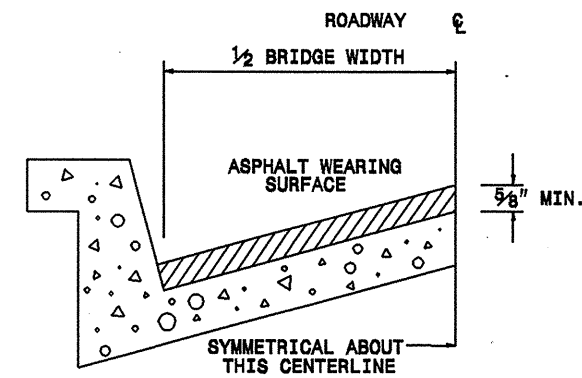


TO BE USED AT ALL NON-SIGNALIZED INTERSECTIONS (NOT TO SCALE)



NOTE: MINI SKIPS SHALL BE PLACED ON A 10' CYCLE, CONTAINING AN 8' AND 2' SKIP, THE WIDTH OF THE SKIP SHALL BE 6".

STATE	PROJECT NO.	SHEET NO.	TOTAL SHEETS
N.C.	7CR.20411.14	7	7



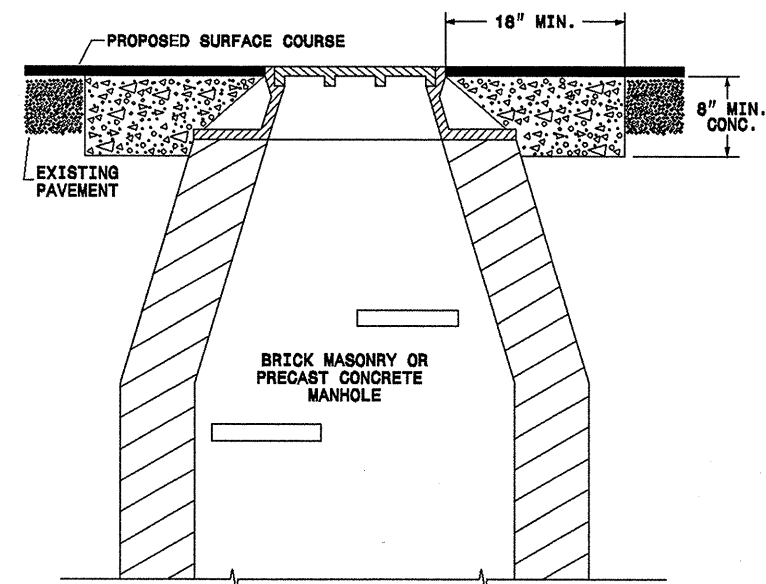
BRIDGE HALF TYPICAL SECTION

FOR BRIDGES WITH FLOOR DRAINS, CARE SHALL BE EXERCISED IN PLACING THE WEARING SURFACE AROUND FLOOR DRAINS SO AS NOT TO HINDER EFFECTIVE DRAINAGE. ALL DRAINS SHALL BE LEFT OPEN. THE PROPOSED WEARING SURFACE SHALL VARY IN THICKNESS AS NECESSARY TO PROVIDE A SMOOTH RIDING SURFACE. A THICKNESS OF NOT LESS THAN 5/8" SHALL BE PROVIDED. THE MAXIMUM THICKNESS SHALL PREFERABLY BE 1-1/2" UNLESS IT IS IMPRACTICAL TO PROVIDE A SMOOTH RIDING SURFACE OTHERWISE.

NOTES

ALL UNPAVED S.R. ROUTES TO BE SURFACED 50' FROM EDGE OF PAVEMENT OF MAIN PROJECT.
 ALL PAVED S.R. ROUTES TO BE RESURFACED TO END OF RADII, OR AS DIRECTED BY THE ENGINEER. EDGES, PAVEMENT WIDENING, INTERSECTIONS AND BRIDGE FLARES ARE INCLUDED IN THE SUMMARY OF QUANTITIES. BRIDGES TO BE RESURFACED AT LOCATIONS AND DEPTH AS DIRECTED BY THE ENGINEER.

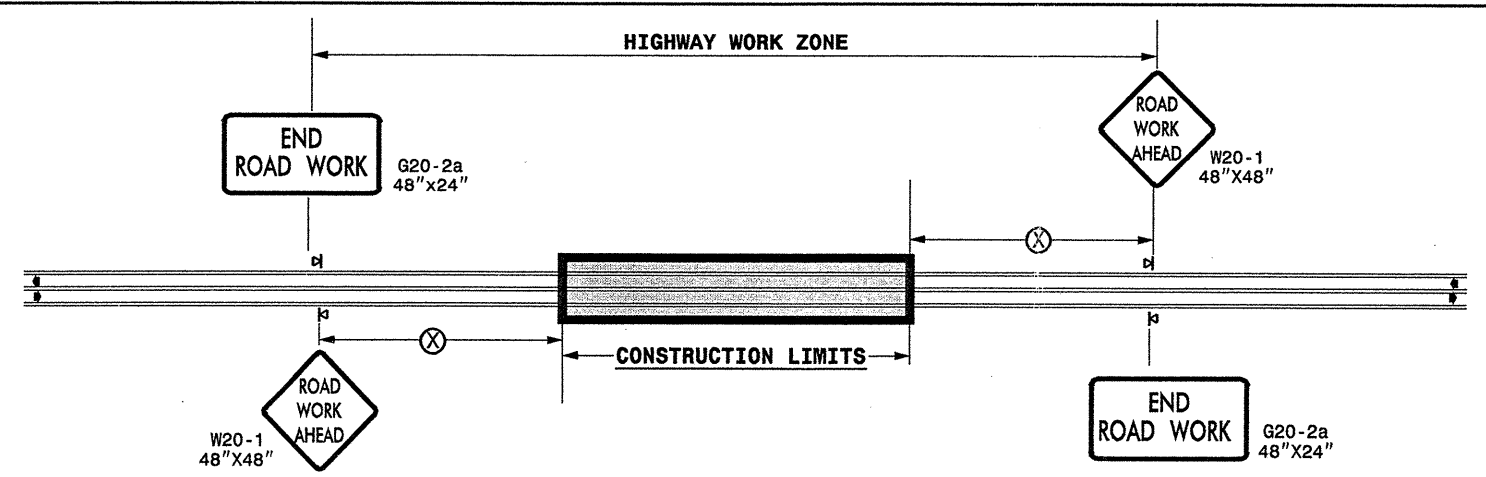
STANDARD CONCRETE ENCASEMENT FOR MANHOLE IN PAVEMENT DETAIL DRAWING NO. 858.01



NOTES:

- MORTAR SHALL BE MIXED TO NCDOT SPECIFICATIONS.
- ALL FAULTY EXISTING BRICKWORK TO BE REMOVED AND REPLACED WITH NEW BRICK MASONRY.
- EXCAVATION FOR THE ADJUSTMENT SHALL BE SHEER CUT ON ALL SIDES.
- USE RAPID SET GROUT, MORTAR OR CONCRETE AS NOTED IN PROJECT SPECIAL PROVISIONS. CLASS B CONCRETE MAY BE USED WHEN THE ADJUSTMENTS ARE NOT IN THE TRAVEL LANE.

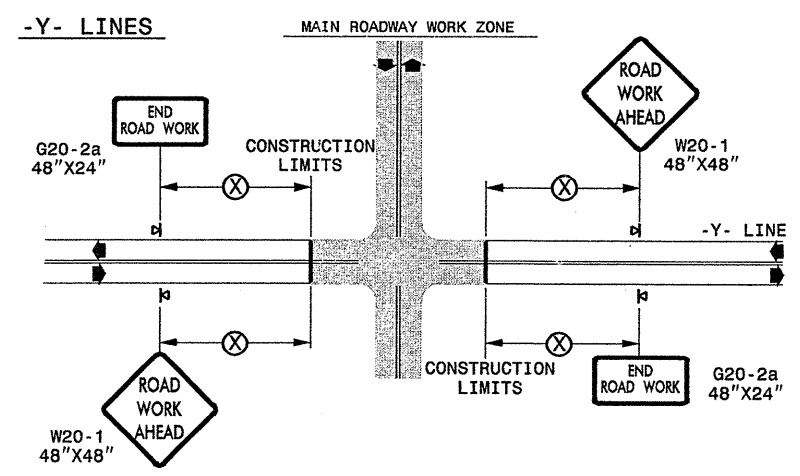
TWO-WAY UNDIVIDED ** (L-LINES)



POSTED SPEED LIMIT (M.P.H.)	RECOMMENDED MINIMUM SIGN SPACING
≤ 50	500'
≥ 55	1000'

STATE OF NORTH CAROLINA
DEPT. OF TRANSPORTATION
DIVISION OF HIGHWAYS
RALEIGH, N.C.

ROADWAYS INTERSECTING ALONG 2 WAY UNDIVIDED WORK ZONE (Y-LINES)



GENERAL NOTES

- USE FLUORESCENT ORANGE SHEETING (TYPE VII OR HIGHER) ON ALL ADVANCED WORK ZONE SIGNS.
- DO NOT INSTALL ADVANCE WARNING SIGNS MORE THAN 3 DAYS PRIOR TO BEGINNING OF WORK.
- ALL SIGN SPACING DIMENSIONS ARE APPROXIMATE, FIELD ADJUST AS NECESSARY OR AS DIRECTED.
- USE PORTABLE WORK ZONE SIGNS ONLY WITH PORTABLE WORK ZONE SIGN STANDS SPECIFICALLY DESIGNED FOR ONE ANOTHER. PORTABLE WORK ZONE SIGNS MAY BE ROLL UP OR APPROVED COMPOSITE.
- PROVIDE PORTABLE WORK ZONE SIGN STANDS, PORTABLE SIGNS AND SIGN SHEETING WHICH ARE LISTED ON THE NORTH CAROLINA DEPARTMENT OF TRANSPORTATION'S APPROVED PRODUCT LIST OR ACCEPTED AS TRAFFIC QUALIFIED BY THE TRAFFIC CONTROL UNIT.
- ** TWO-WAY UNDIVIDED ADVANCE WARNING SIGN CONFIGURATION MAY BE USED ON URBAN MULTI-LANE FACILITIES WHERE CONDITIONS LIMIT THE USE OF DUAL MOUNTED SIGNS AS DETERMINED BY THE ENGINEER.

LEGEND

◀ PORTABLE SIGN

➡ DIRECTION OF TRAFFIC FLOW

DETAIL DRAWING
FOR TWO-WAY UNDIVIDED
WORK ZONE WARNING SIGNS

SHEET 1 OF 1

APPROVED: _____	DATE: _____	DETAIL DRAWING FOR TWO-WAY UNDIVIDED ADVANCED WORK ZONE WARNING SIGNS	
SEAL	SCALE: NONE	REVISIONS	
	DATE: _____	7-98	10/01
	DWG. BY: _____	10-98	03/04
	DESIGN BY: _____	01/01	11/04
REVIEWED BY: _____			

25-AUG-2006 12:29
 \\DOT\DFSR00101\GROUPS-WZTCCC\designgroup4\common4\special\projects\resurfacing2006\div07\7cr104115\etc\gulford\7cr104115_2wayundivurbfrwys\july2006.dgn
 pseymore AT WZTCCC