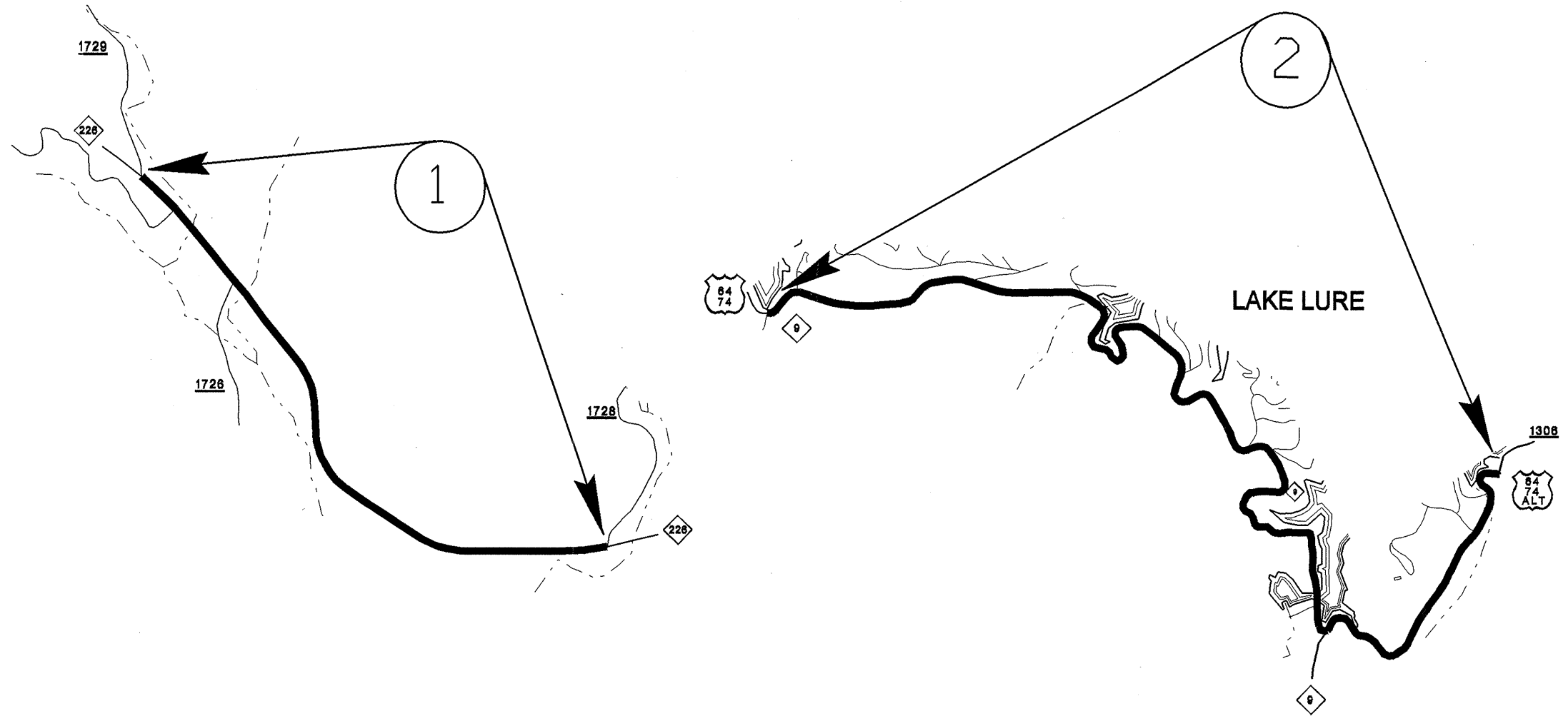
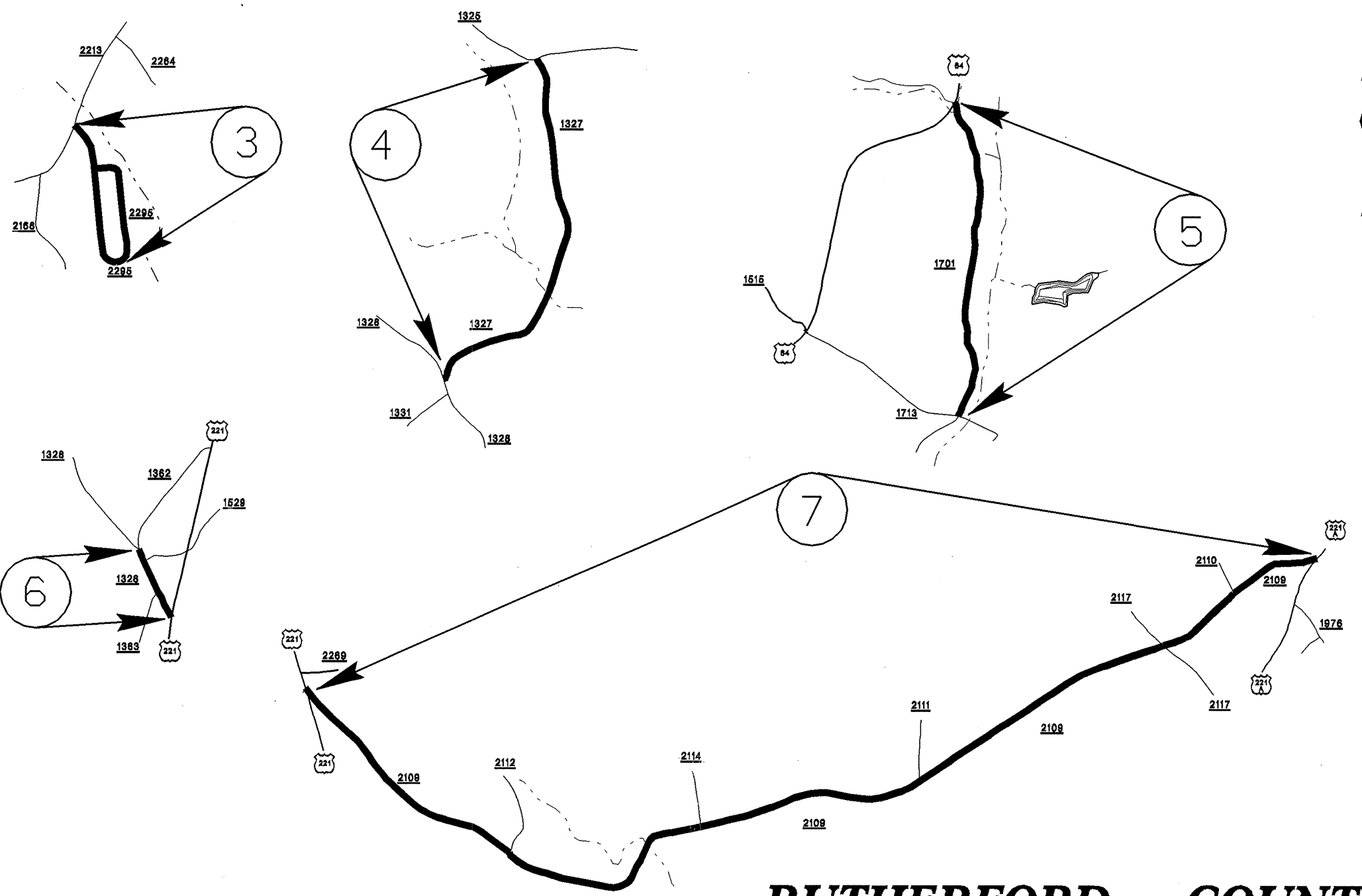


PROJECT NO.	SHEET NO.	TOTAL SHEETS
13CR.10811.4, 13CR.20811.4	1	



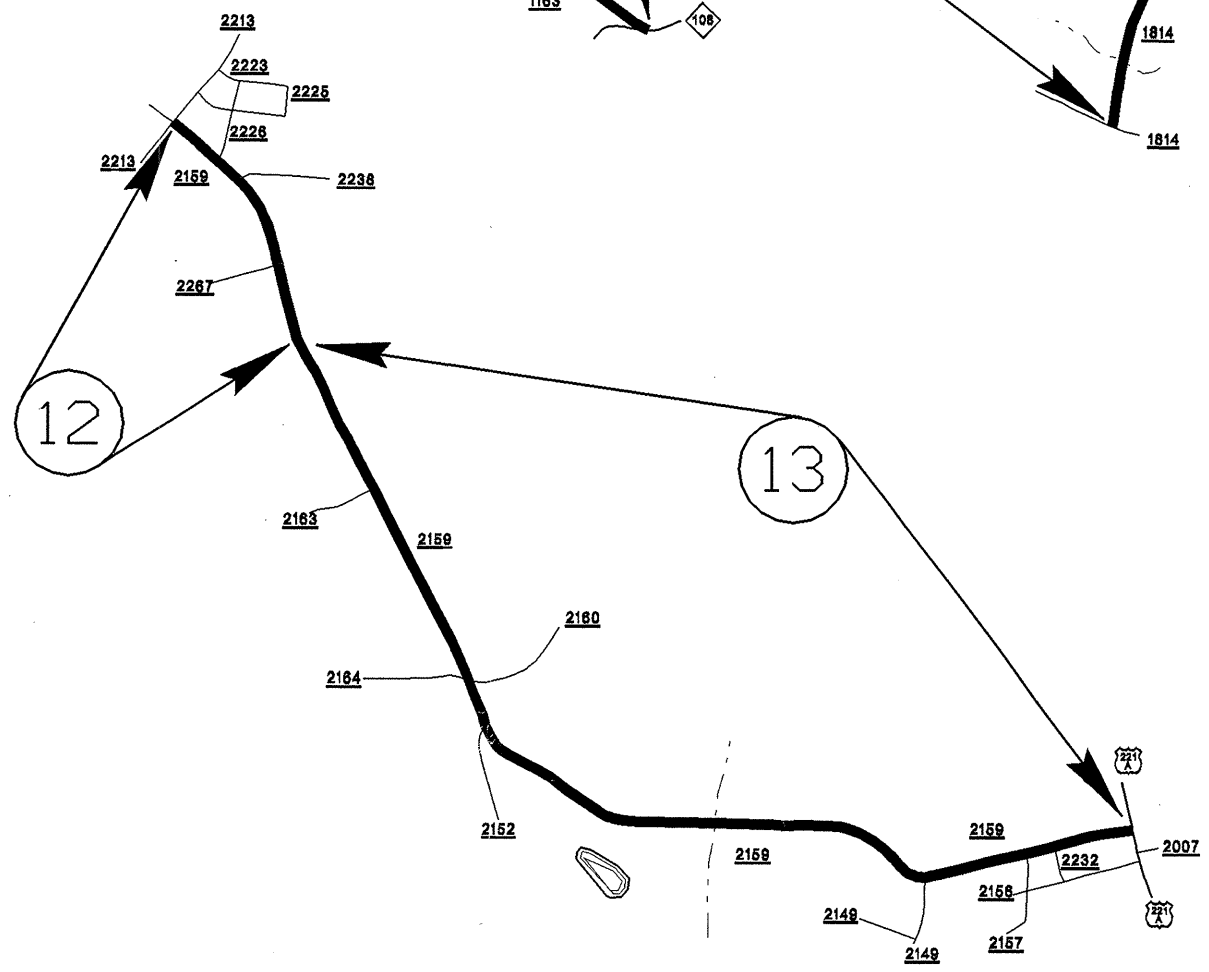
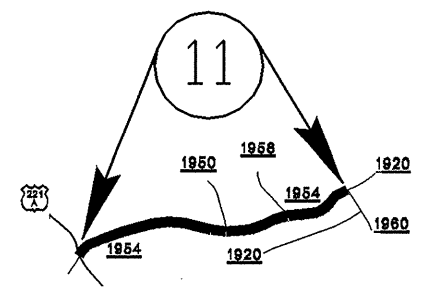
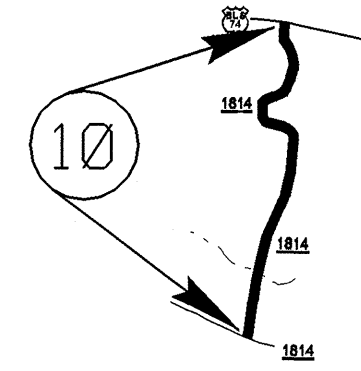
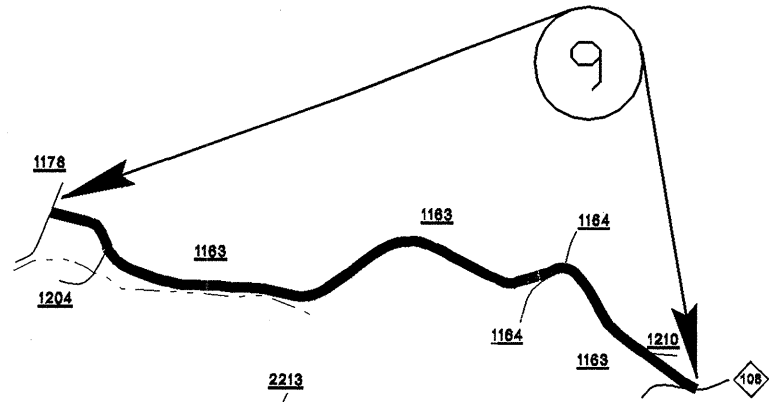
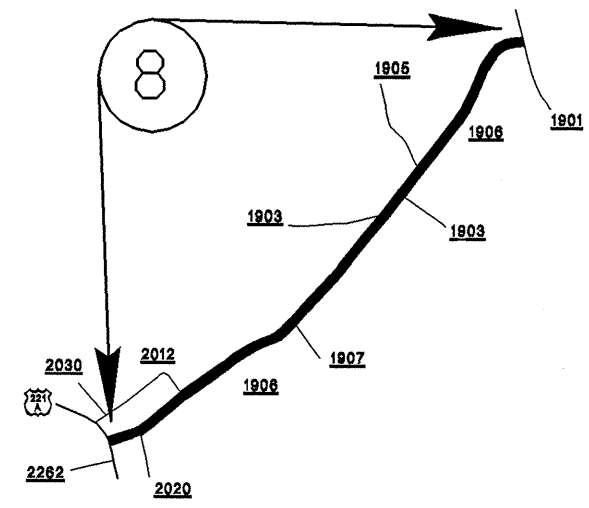
**RUTHERFORD COUNTY**

PROJECT NO.	SHEET NO.	TOTAL SHEETS
13CR.10811.4, 13CR.20811.4	2	



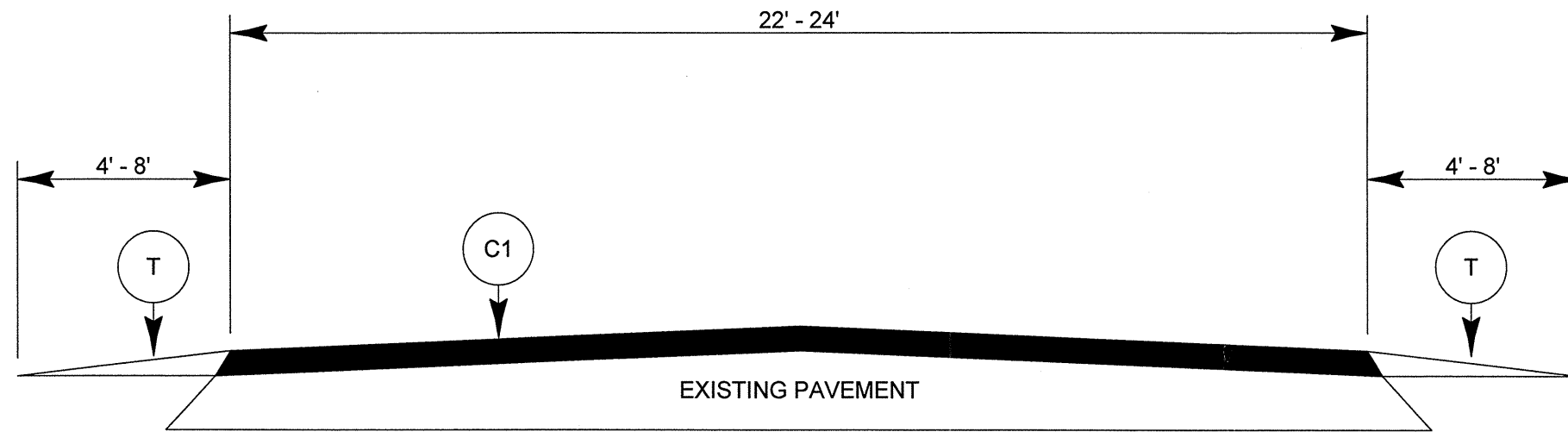
**RUTHERFORD COUNTY**

PROJECT NO.	SHEET NO.	TOTAL SHEETS
13CR.10811.4, 13CR.20811.4	3	

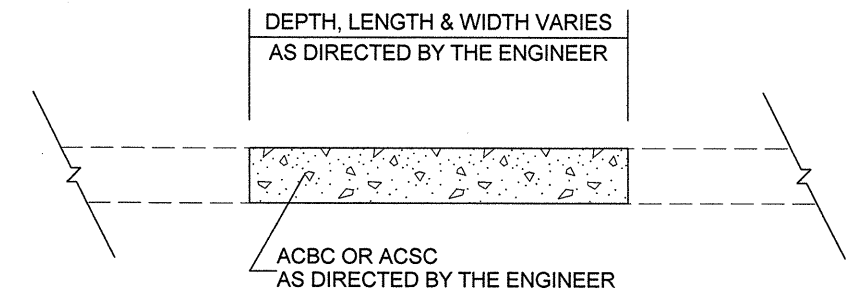


**RUTHERFORD COUNTY**

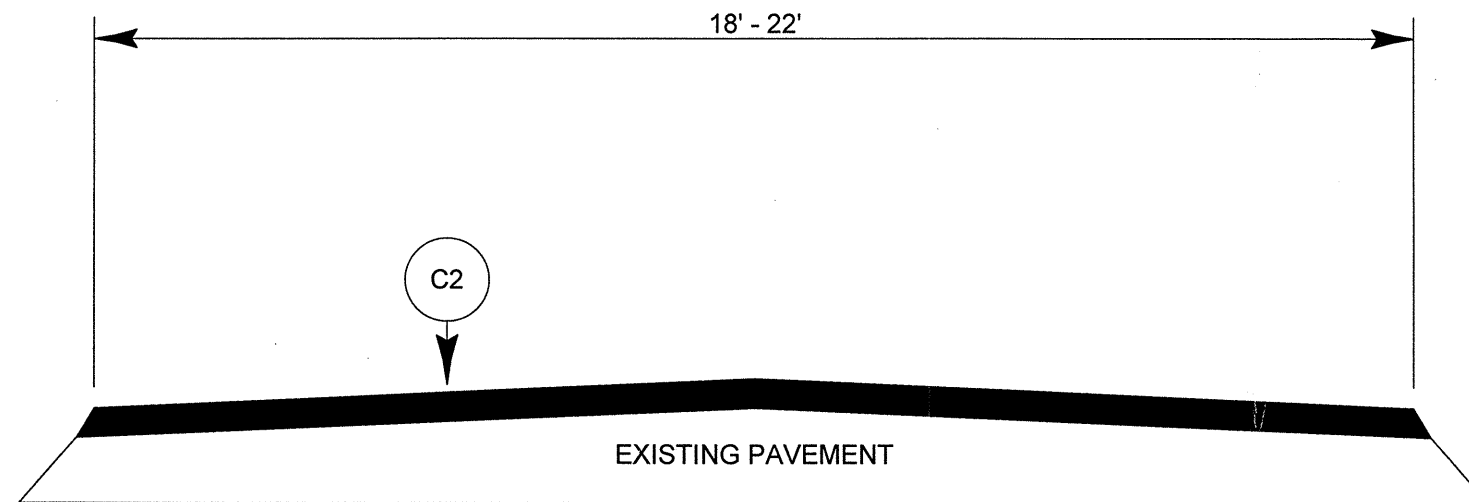
PROJECT NO. 13CR.10811.4, 13CR.20811.4	SHEET NO. <b>4</b>	TOTAL SHEETS
---	-----------------------	--------------



TYPICAL SECTION NO. 1



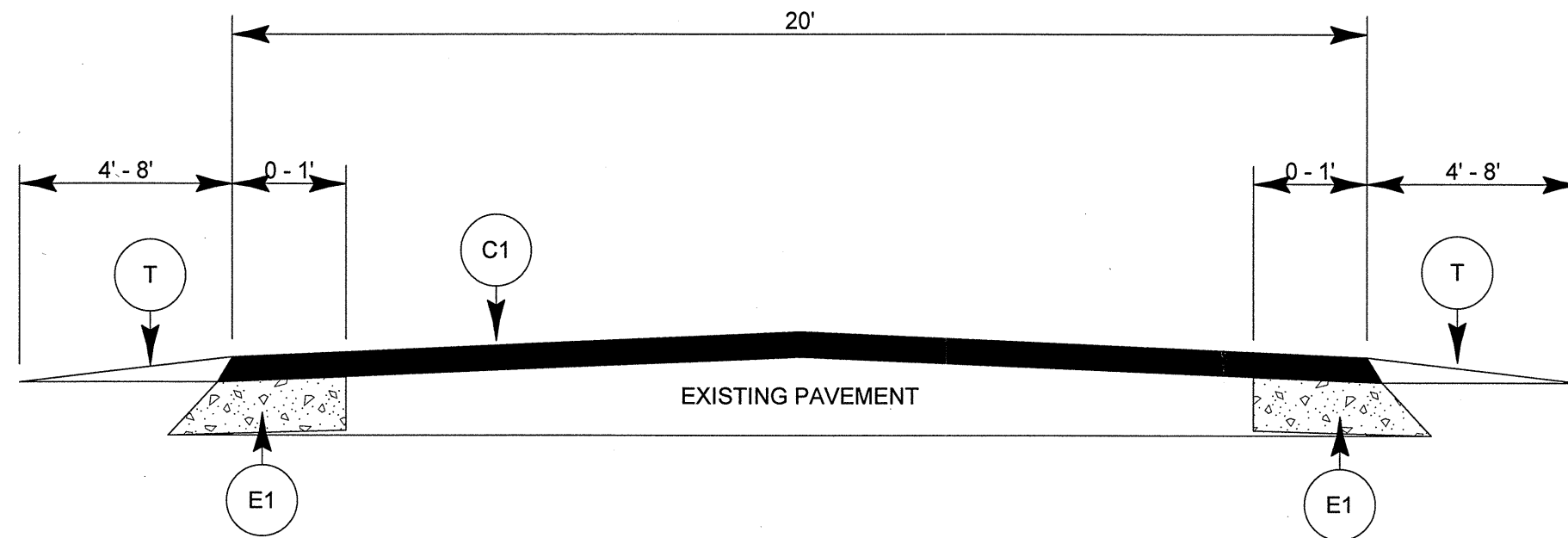
PATCHING EXISTING PAVEMENT



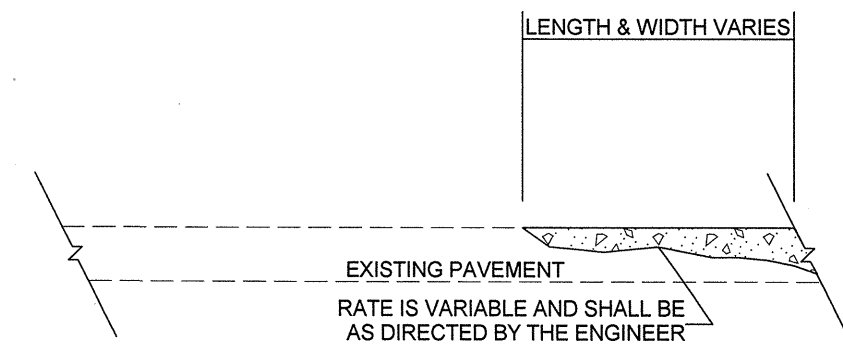
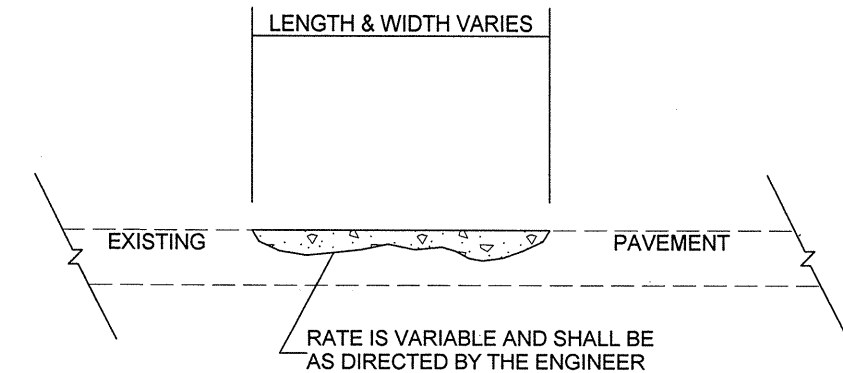
TYPICAL SECTION NO. 2

PAVEMENT SCHEDULE	
C1	PROP. APPROX. 1.5" ASPHALT CONCRETE SURFACE COURSE, TYPE S9.5B, AT AN AVERAGE RATE OF 168 LBS. PER SQ. YARD
C2	PROP. APPROX. 1.5" ASPHALT CONCRETE SURFACE COURSE, TYPE SF9.5A, AT AN AVERAGE RATE OF 165 LBS. PER SQ. YARD
E1	PROP. APPROX. 6" ASPHALT CONCRETE BASE COURSE, TYPE B25.0B, AT AN AVERAGE RATE OF 342 LBS. PER SQ. YARD IN EACH OF TWO LAYERS
T	EARTH MATERIAL

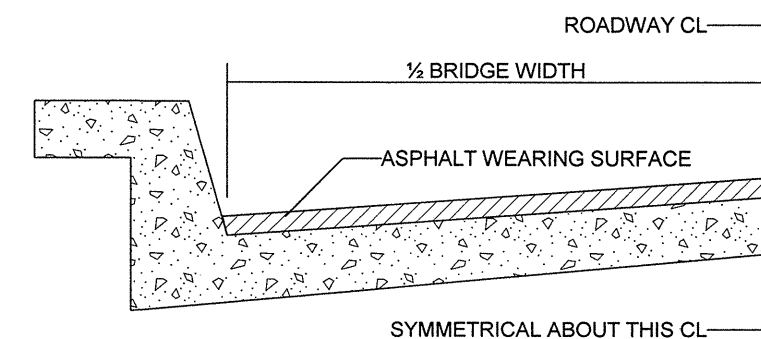
PROJECT NO. 13CR.10811.4, 13CR.20811.4	SHEET NO. 5	TOTAL SHEETS
---	----------------	--------------



TYPICAL SECTION NO. 3



ASPHALT CONCRETE SURFACE COURSE



BRIDGE HALF TYPICAL SECTION

FOR BRIDGES WITH FLOOR DRAINS, CARE SHALL BE EXERCISED IN PLACING THE WEARING SURFACE AROUND FLOOR DRAINS SO AS NOT TO HINDER EFFECTIVE DRAINAGE. ALL DRAINS SHALL BE LEFT OPEN

THE PROPOSED WEARING SURFACE SHALL VARY IN THICKNESS AS NECESSARY TO PROVIDE A SMOOTH RIDING SURFACE. A THICKNESS OF NOT LESS THAN 5/8" SHALL BE PROVIDED. THE MAXIMUM THICKNESS SHALL PREFERABLY BE 1 1/2" UNLESS IT IS IMPRACTICAL TO PROVIDE A SMOOTH RIDING SURFACE OTHERWISE.

**NOTES**

ALL UNPAVED ROADS TO BE RESURFACED 50' FROM EDGE OF PAVEMENT OF MAIN PROJECT.  
 ALL PAVED S.R. ROADS TO BE RESURFACED TO THE ENDS OF THE RADII, OR AS DIRECTED BY THE ENGINEER.  
 EDGES, PAVEMENT WIDENING, INTERSECTIONS AND BRIDGE FLARES ARE INCLUDED IN THE TABLE OF QUANTITIES.  
 SHOULDERS AND DITCHES ARE TO BE CONSTRUCTED BY OTHERS UNLESS OTHERWISE INDICATED.  
 BRIDGES ARE TO BE RESURFACED AT LOCATIONS AND TO DEPTH AS DIRECTED BY THE ENGINEER

PROJECT NO.	SHEET NO.	TOTAL NO.
13CR.10811.4, 13CR.20811.4	6	

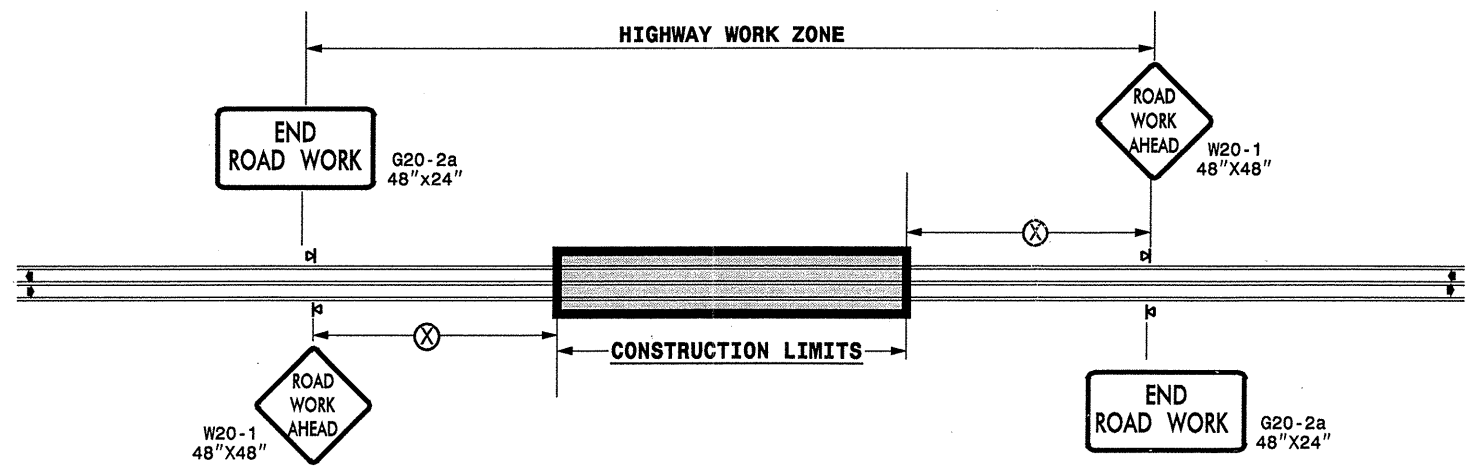
## SUMMARY OF QUANTITIES

PROJECT NO	COUNTY	MAP NO	ROUTE	DESCRIPTION	TYP NO	LENGTH MI	WIDTH FT	INCIDENTAL STONE BASE TONS	SHOULDER RECONSTRUCTION SMI	BASE COURSE, B25.0B TONS	SURFACE COURSE, S9.5B TONS	SURFACE COURSE, SF9.5A TON	PG 64-22 PLANT MIX TONS	PATCHING EXISTING PAVEMENT TONS	METER OR VALVE BOX EA
13CR.10811.4	Rutherford	1	NC 226	FROM SR 1728 TO SR 1729	1	1.65	22	83	3.30		2,089.00		125.00	17	
		2	US 64/74-A	FROM BRIDGE AT POOL CREEK TO SR 1306	1	4.22	24	211	8.44		5,519.00		331.00	107	3
<b>TOTAL FOR PROJ NO. 13CR.10811.4</b>						<b>5.87</b>		<b>294</b>	<b>11.74</b>		<b>7,608.00</b>		<b>456.00</b>	<b>124</b>	<b>3</b>
13CR.20811.4	Rutherford	3	SR 2295	FROM SR 2213 TO SR 2295	2	0.98	20	49				1,050.00	68.00	20	
		4	SR 1327	FROM SR 1325 TO SR 1328	2	1.74	18	87				1,899.00	123.00	150	
		5	SR 1701	FROM US 64 TO SR 1713	2	1.36	18	68				1,312.00	85.00	75	
		6	SR 1328	FROM US 221 TO SR 1362	2	0.26	18	13				361.00	23.00	3	
		7	SR 2109	FROM US 221 TO US 221-A	2	4.94	18	247				4,767.00	310.00	230	
		8	SR 1906	FROM SR 1901 TO US 221-A	2	1.57	18	79				1,515.00	98.00	100	
		9	SR 1163	FROM NC 108 TO SR 1178	2	2.11	18	106				2,036.00	132.00	350	
		10	SR 1814	FROM SR 1901 TO US 74 BUS	2	0.78	22	39				1,029.00	67.00	20	1
		11	SR 1954	FROM SR 1920 TO US 221-A	2	0.63	20	32				675.00	44.00	100	
		12	SR 2159	FROM SR 2213 TO END OF 24' PVMT	1	0.57	24	28	1.14		745.00		45.00	40	
		13	SR 2159	FROM BEG. 18' PVMT TO US 221-A	3	2.49	20	125	4.98	1,249.00	2,936.00		230.00	100	
<b>TOTAL FOR PROJ NO. 13CR.20811.4</b>						<b>17.43</b>		<b>873</b>	<b>6.12</b>	<b>1,249.00</b>	<b>3,681.00</b>	<b>14,644.00</b>	<b>1,225.00</b>	<b>1,188</b>	<b>1</b>
<b>GRAND TOTAL</b>						<b>23.3</b>		<b>1,167</b>	<b>17.86</b>	<b>1,249.00</b>	<b>11,289.00</b>	<b>14,644.00</b>	<b>1,681.00</b>	<b>1,312</b>	<b>4</b>

## THERMOPLASTIC AND PAINT QUANTITIES

PROJECT NO	COUNTY	MAP NO	ROUTE	DESCRIPTION	4685000000-E	4686000000-E	4705000000-E	4710000000-E	4721000000-E		4810000000-E	
					4" X 90 M WHITE THERMO LF	4" X 120 M YELLOW THERMO LF	16" X 120 M WHITE THERMO LF	24" X 120 M WHITE THERMO LF	THERMO MSG SCHOOL 120 M EA	THERMO RXR 120 M EA	4" WHITE PAINT LF	4" YELLOW PAINT LF
13CR.10811.4	Rutherford	1	NC 226	FROM SR 1728 TO SR 1729	17,424	17,424						
		2	US 64/74-A	FROM BRIDGE AT POOL CREEK TO SR 1306	44,563	44,563						
<b>TOTAL FOR PROJ NO. 13CR.10811.4</b>					<b>61,987</b>	<b>61,987</b>						
13CR.20811.4	Rutherford	3	SR 2295	FROM SR 2213 TO SR 2295							20,698	20,698
		4	SR 1327	FROM SR 1325 TO SR 1328							36,749	36,749
		5	SR 1701	FROM US 64 TO SR 1713							28,723	28,723
		6	SR 1328	FROM US 221 TO SR 1362							5,491	5,491
		7	SR 2109	FROM US 221 TO US 221-A							104,333	104,333
		8	SR 1906	FROM SR 1901 TO US 221-A							33,158	33,158
		9	SR 1163	FROM NC 108 TO SR 1178							44,563	44,563
		10	SR 1814	FROM SR 1901 TO US 74 BUS							16,474	16,474
		11	SR 1954	FROM SR 1920 TO US 221-A				100	12		13,306	13,306
		12	SR 2159	FROM SR 2213 TO END OF 24' PVMT							12,038	12,038
		13	SR 2159	FROM BEG. 18' PVMT TO US 221-A			100	50		4	52,589	52,589
<b>TOTAL FOR PROJ NO. 13CR.20811.4</b>							<b>100</b>	<b>150</b>	<b>12</b>	<b>4</b>	<b>368,122</b>	<b>368,122</b>
<b>GRAND TOTAL</b>						<b>61,987</b>	<b>61,987</b>	<b>100</b>	<b>150</b>	<b>12</b>	<b>4</b>	<b>736,244</b>

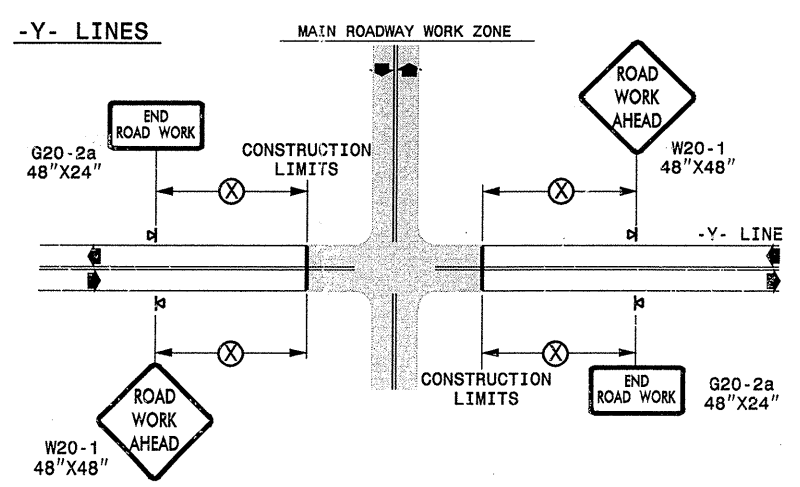
**TWO-WAY UNDIVIDED \*\* (L-LINES)**



POSTED SPEED LIMIT (M.P.H.)	RECOMMENDED MINIMUM SIGN SPACING
≤ 50	500'
≥ 55	1000'

STATE OF NORTH CAROLINA  
DEPT. OF TRANSPORTATION  
DIVISION OF HIGHWAYS  
RALEIGH, N.C.

**ROADWAYS INTERSECTING ALONG 2 WAY UNDIVIDED WORK ZONE (Y-LINES)**



DETAIL DRAWING  
FOR TWO-WAY UNDIVIDED  
WORK ZONE WARNING SIGNS

**GENERAL NOTES**

- USE FLUORESCENT ORANGE SHEETING (TYPE VII OR HIGHER) ON ALL ADVANCED WORK ZONE SIGNS.
- DO NOT INSTALL ADVANCE WARNING SIGNS MORE THAN 3 DAYS PRIOR TO BEGINNING OF WORK.
- ALL SIGN SPACING DIMENSIONS ARE APPROXIMATE, FIELD ADJUST AS NECESSARY OR AS DIRECTED.
- USE PORTABLE WORK ZONE SIGNS ONLY WITH PORTABLE WORK ZONE SIGN STANDS SPECIFICALLY DESIGNED FOR ONE ANOTHER. PORTABLE WORK ZONE SIGNS MAY BE ROLL UP OR APPROVED COMPOSITE.
- PROVIDE PORTABLE WORK ZONE SIGN STANDS, PORTABLE SIGNS AND SIGN SHEETING WHICH ARE LISTED ON THE NORTH CAROLINA DEPARTMENT OF TRANSPORTATION'S APPROVED PRODUCT LIST OR ACCEPTED AS TRAFFIC QUALIFIED BY THE TRAFFIC CONTROL UNIT.
- \*\* TWO-WAY UNDIVIDED ADVANCE WARNING SIGN CONFIGURATION MAY BE USED ON URBAN MULTI-LANE FACILITIES WHERE CONDITIONS LIMIT THE USE OF DUAL MOUNTED SIGNS AS DETERMINED BY THE ENGINEER.

**LEGEND**

◁ PORTABLE SIGN

➔ DIRECTION OF TRAFFIC FLOW

SHEET 1 OF 1

APPROVED: _____	DATE: _____	DETAIL DRAWING FOR TWO-WAY UNDIVIDED ADVANCED WORK ZONE WARNING SIGNS	
SEAL			
SCALE: NONE		REVISIONS	
DATE: _____		7-98	10/01
DWG. BY: _____		10-98	03/04
DESIGN BY: _____		01/01	11/04
REVIEWED BY: _____	DATE: _____	FILE	

02-OCT-2005 12:14  
 C:\DOT\DESIGN\GROUPS\WZTCCC\design\group4\common4\resurfacing\resurfacing2006\dlv\13cr10811.4\_2wayundivurbfrwys\july2006.dgn  
 psey/more  
 AT WZTCC206.427