

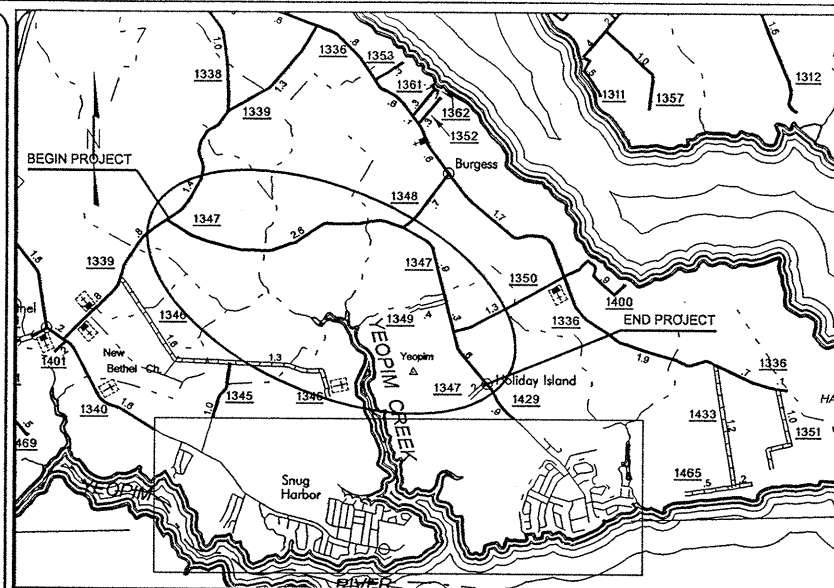
STATE	STATE PROJECT REFERENCE NO.	SHEET NO.	TOTAL SHEETS
N.C.	39420	1	
STATE PROJ. NO.	NCHA PROJ. NO.	DESCRIPTION	
	MA01035R		

STATE OF NORTH CAROLINA  
DIVISION OF HIGHWAYS

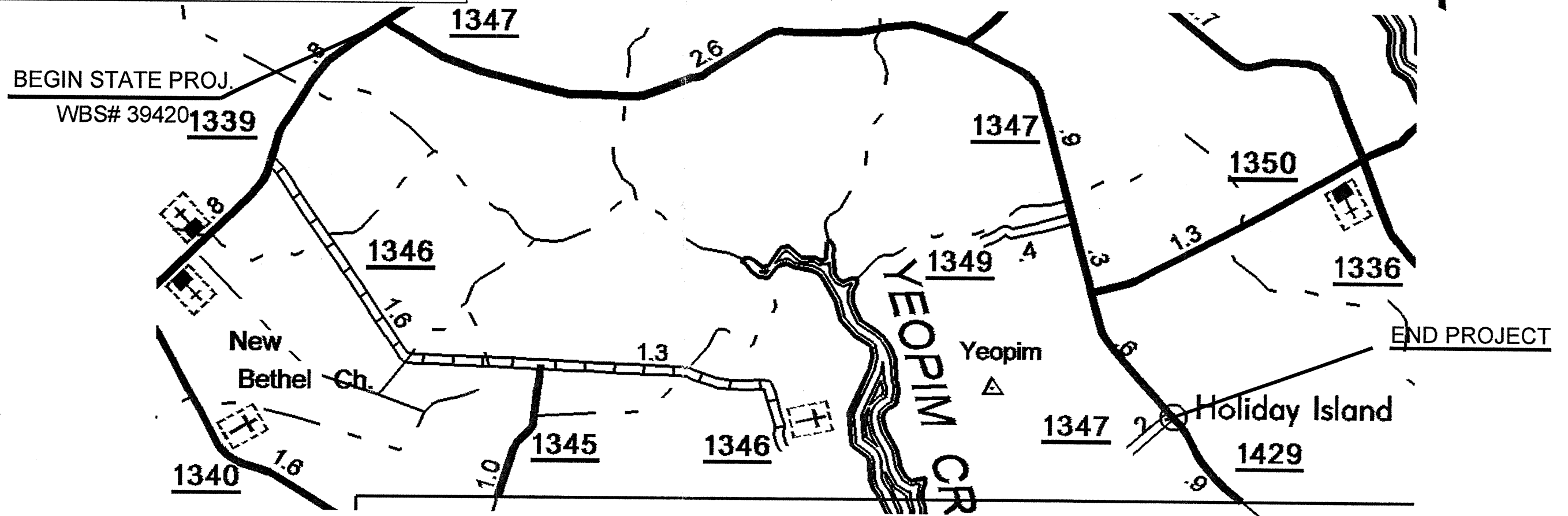
**PERQUIMANS COUNTY**

LOCATION: SR 1347 FROM SR 1339 TO SR 1429

TYPE OF WORK: WIDENING AND RESURFACING



VICINITY MAP



GRAPHIC SCALES  
  
**NTS**

DESIGN DATA  
  
ADT = 380

PROJECT LENGTH  
  
LENGTH ROADWAY STATE PROJECT # 39420 = 4.50 MILES  
  
TOTAL LENGTH STATE PROJECT # 39420 = 4.50 MILES

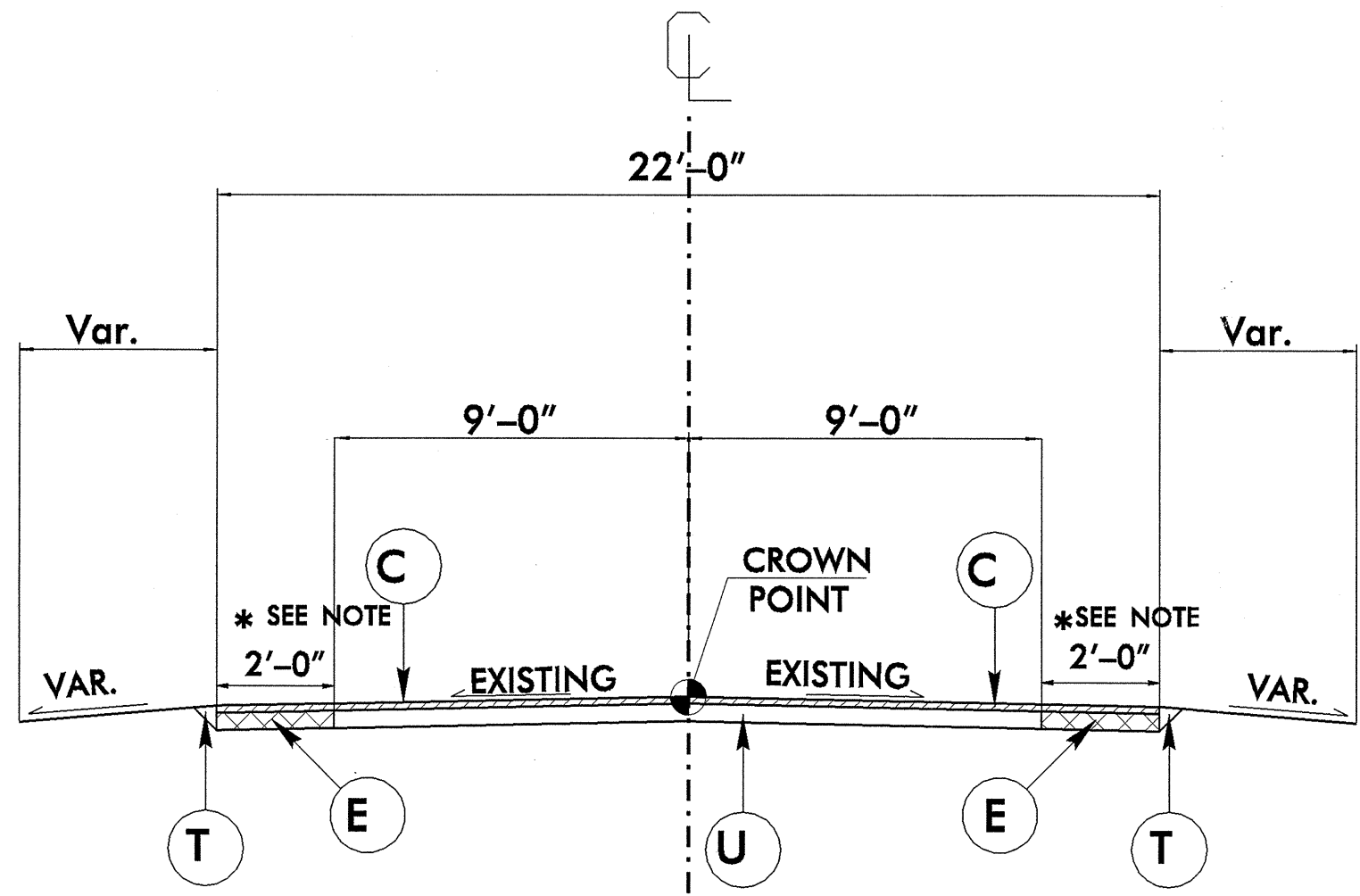
Prepared In the Office of:  
**DIVISION OF HIGHWAYS**  
113 Airport Dr., Suite 100, Edenton NC 27932  
2006 STANDARD SPECIFICATIONS  
  
LETTING DATE:  
  
J. D. Jennings, P.E.  
DIVISION OPERATIONS ENGINEER  
  
S. P. Fenwick, PLS  
DIVISION DESIGN-CONST. ENGINEER

DIVISION OF HIGHWAYS  
STATE OF NORTH CAROLINA

12-SEP-2006 14:31 i:\current\projects\moving ahead\perquimans\sr 1347\_perquimans\revised contract info\title.dgn cslchtd AT DICAD206378

WBS #: 39420 NCMA PROJECT: MA01035R

09/08/99



**TYPICAL SECTION**

**PAVEMENT SCHEDULE**

C	PROP. APPROX. 1 1/2" ASPHALT CONCRETE SURFACE COURSE, TYPE S9.5B, AT AN AVERAGE RATE OF 168 LBS. PER SQ. YD.
E	PROP. APPROX. 5 1/2" ASPHALT CONCRETE BASE COURSE, TYPE B25.0B, AT AN AVERAGE RATE OF 627 LBS. PER SQ. YD.
T	EARTH MATERIAL.
U	EXISTING PAVEMENT.

NOTE: PAVEMENT EDGE SLOPES ARE 1:1 UNLESS SHOWN OTHERWISE.

**NOTE:**

\* END 150' SYMETRICAL TAPER AT EXSITING 20' WIDE PAVEMENT SOUTH OF INTERSECTION SR 1347 AND SR 1429

PROJECT NO.	SHEET NO.	TOTAL NO.
39420	3	

## SUMMARY OF QUANTITIES


PROJECT NO	COUNTY	MAP NO	ROUTE	DESCRIPTION	TYP NO	LENGTH MI	WIDTH FT	INCIDENTAL STONE BASE TONS	SHOULDER RECONST. SMI	BASE COURSE, B25.0B TONS	SURFACE COURSE, S9.5B TONS	PG 64-22 PLANT MIX TONS	6" DRIVEWAYS SY	METER OR VALVE BOX EA	TEMPORARY SILT FENCE LF	EROSION CONTROL STONE, CL-B TON	SEED & MULCHING AC
39420	Perquimans	1	SR 1347	WIDEN, RESURFACE, DRAINAGE	1	4.5	22	450	9	4,287	5,427	510	60	2	200	10	4.5
<b>TOTAL FOR PROJ NO. 39420</b>						<b>4.5</b>		<b>450</b>	<b>9</b>	<b>4,287</b>	<b>5,427</b>	<b>510</b>	<b>60</b>	<b>2</b>	<b>200</b>	<b>10</b>	<b>4.5</b>
<b>GRAND TOTAL</b>						<b>4.5</b>		<b>450</b>	<b>9</b>	<b>4,287</b>	<b>5,427</b>	<b>510</b>	<b>60</b>	<b>2</b>	<b>200</b>	<b>10</b>	<b>4.5</b>

## THERMOPLASTIC AND PAINT QUANTITIES

PROJECT NO	COUNTY	MAP NO	ROUTE	DESCRIPTION	TYP NO	LENGTH MI	WIDTH FT	4" X 90 M WHITE THERMO LF	4" X 120 M YELLOW THERMO LF	YELLOW & YELLOW MARKERS EA
39420	Perquimans	1	SR 1347	WIDEN AND RESURFACE	1	4.5	22	48,420	29,700	297
<b>TOTAL FOR PROJ NO. 39420</b>						<b>4.5</b>		<b>48,420</b>	<b>29,700</b>	<b>297</b>
<b>GRAND TOTAL</b>						<b>4.5</b>		<b>48,420</b>	<b>29,700</b>	<b>297</b>

# TWO LANE, TWO WAY WORK ZONE (L-LINES)

FURNISHED BY THE DEPARTMENT

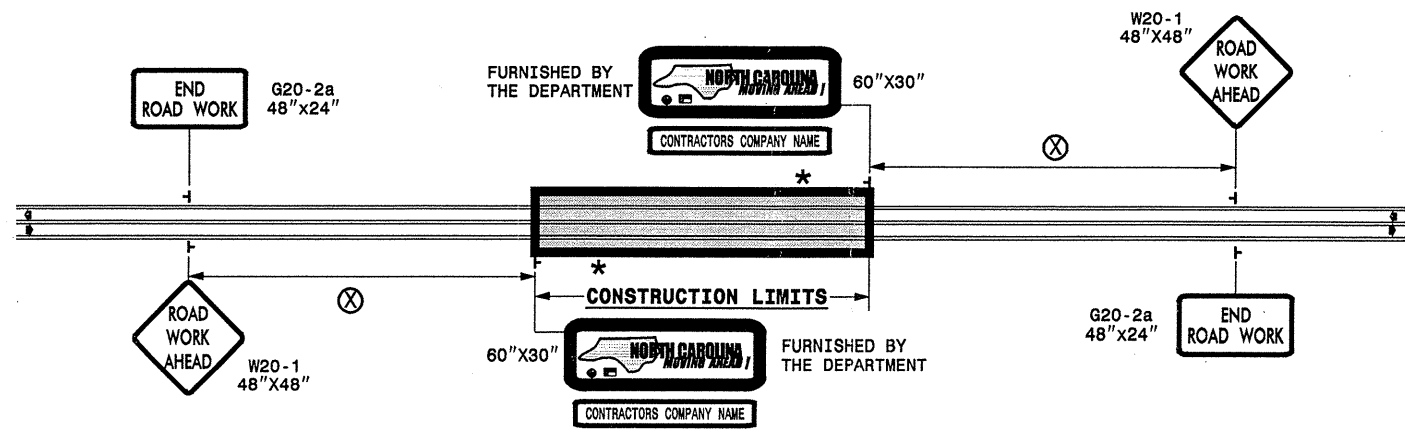


60"X30"

---

CONTRACTORS COMPANY NAME

60" Max. X 12"



POSTED SPEED LIMIT (M.P.H.)	RECOMMENDED MINIMUM SIGN SPACING
P.S.L. ≤ 50	⊗
P.S.L. ≥ 55	350'
	500'

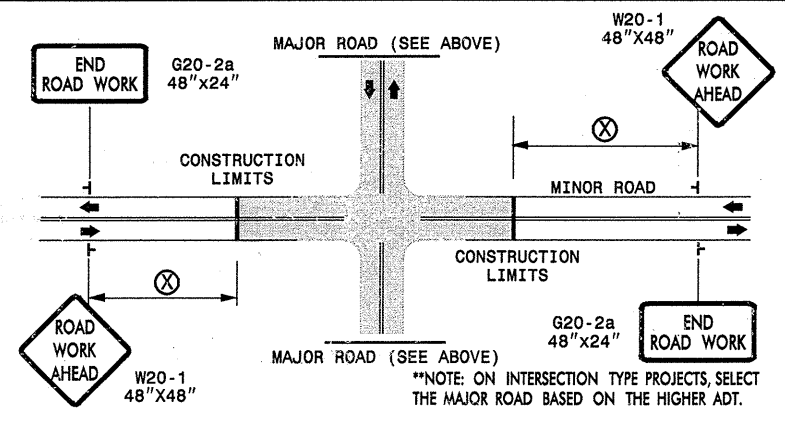
**\* ROAD WORK NEXT XX MILES** G20-1A, 60"X24"

THIS SIGN TO BE USED ON PROJECTS LONGER THAN 2 MILES  
 THE NUMBER DISPLAYED ON THE SIGN IS TO BE A WHOLE NUMBER ROUNDED UP TO THE NEXT MILE  
 IT'S TO BE LOCATED 1,500 FEET INSIDE OF THE CONSTRUCTION LIMITS

PROJ. REFERENCE NO. WBS 39420	SHEET NO. NCMA-1
----------------------------------	---------------------

STATE OF NORTH CAROLINA  
 DEPT. OF TRANSPORTATION  
 DIVISION OF HIGHWAYS  
 RALEIGH, N.C.

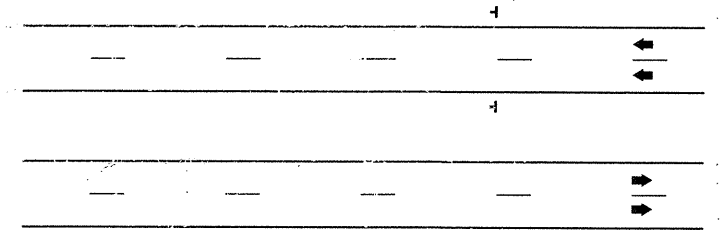
# INTERSECTIONS (-Y- LINES)



# FREEWAYS/INTERSTATES

DUAL MOUNT "ROAD WORK AHEAD" SIGNS 1,000' IN ADVANCE OF PROJECT LIMITS

DUAL MOUNT "MOVING AHEAD" SIGNS 500' IN ADVANCE OF PROJECT LIMITS



## GENERAL NOTES

- USE FLUORESCENT ORANGE SHEETING (TYPE VII OR HIGHER) ON ALL ADVANCED WORK ZONE SIGNS.
- DO NOT INSTALL ADVANCE WARNING SIGNS MORE THAN 3 DAYS PRIOR TO BEGINNING OF WORK.
- SIGNS SHOWN ARE REQUIRED FOR WORK ZONES THAT WILL REMAIN IN EFFECT OVERNIGHT. FOR SHORT-TERM DAILY MAINTENANCE TYPE OPERATIONS, THIS SIGNING APPLICATION IS OPTIONAL; MAY USE ONLY APPLICABLE ROADWAY STANDARD DRAWINGS INSTEAD. HOWEVER, IF THIS SIGNING APPLICATION IS USED, SIGNS MAY BE PORTABLE MOUNTED. USE PORTABLE WORK ZONE SIGNS ONLY WITH PORTABLE WORK ZONE SIGN STANDS SPECIFICALLY DESIGNED FOR ONE ANOTHER. PORTABLE WORK ZONE SIGNS MAY BE ROLL UP OR APPROVED COMPOSITE.
- ALL SIGN SPACING DIMENSIONS ARE APPROXIMATE, FIELD ADJUST AS NECESSARY OR AS DIRECTED.
- USE 3LB STEEL U-CHANNEL POST OR 4" X 4" WOOD POST FOR ALL WORK ZONE SIGNS. 3LB STEEL U-CHANNEL POSTS MUST MEET THE REQUIREMENTS OF STANDARD SPECIFICATION SECTION 1094-1(B), MAY BE GALVANIZED STEEL, OR MAY BE PAINTED GREEN BY THE POST MANUFACTURER. SQUARE STEEL TUBING POSTS HAVING EQUIVALENT STRENGTH OF THE 3 LB STEEL U-CHANNEL POST ARE ALSO ACCEPTABLE FOR USE. ERECT SIGNS PER ROADWAY STANDARD DRAWING 1110.01. PAYMENT FOR WOOD POSTS, 3LB STEEL U-CHANNEL AND SQUARE STEEL TUBING POSTS WITH SIGNS WILL BE MADE ACCORDING TO STANDARD SPECIFICATION "WORK ZONE SIGNS" SECTION 1110.
- WHEN NECESSARY, USE SPLICING IN ACCORDANCE WITH ROADWAY STANDARD DRAWING NO. 1110.01. REMOVE ENTIRE POST WHEN REMOVING SIGNS WITH SPLICED POSTS.
- DO NOT BACK BRACE SIGN SUPPORTS.

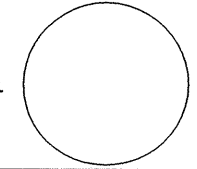

**LEGEND**

┆ STATIONARY SIGN

◀ DIRECTION OF TRAFFIC FLOW

DETAIL DRAWING FOR ADVANCE  
 WARNING WORK ZONE SIGNS

SHEET 1 OF 1

APPROVED: _____	DATE: _____	<b>ADVANCE WARNING WORK ZONE SIGNS FOR "MOVING AHEAD"</b>	
SEAL 	SCALE: NONE		REVISIONS
	DATE: 07/03		11/04
	DWG. BY: JSK		12/04
	DESIGN BY: JSK		
	REVIEWED BY: SK		