

WBS # 37687  
 Sheet # 1

PROJECT NO.	SHEET NO.	TOTAL NO.
MA10121R	2	

### SUMMARY OF QUANTITIES

PROJECT NO	COUNTY	MAP NO	ROUTE	DESCRIPTION	TYP NO	LENGTH MI	WIDTH FT	CLEARING & GRUBBING LS	UNDERCUT EXCAVATION CY	CLASS IV SUBGRADE STABILIZATION TON	BORROW CY	REMOVAL OF EXISTING PAVEMENT SY	FABRIC FOR SOIL STABILIZATION SY	GRADING LS	12" RCP, CLASS III LF	15" RCP, CLASS III LF	18" RCP, CLASS III LF	24" RCP, CLASS III LF	PIPE REMOVAL LF	INCIDENTAL STONE BASE TONS	SHOULDER RECONSTRUCTION SMI	DITCHING LF	0" TO 4" MILLING SY	INCIDENTAL MILLING SY	BASE COURSE, B25.0C TONS	INTERMEDIATE COURSE, I19.0C TONS	SURFACE COURSE, S9.5C TONS	PG 64-22 PLANT MIX TONS	PG 70-22 PLANT MIX TONS	PLAIN RIP RAP CLASS I TONS	POLICE HR
MA10121R	Union	1	SECRET SHORTCUT RD.	FROM PVT. JOINT NEAR ROCKY RIVER RD. TO US 74.		4.39	22	1	500	100	500	100	600	1.00	96.00	1,296.00	62.00	16.00	1,450.00	400.00	4.00	1,000	1,280	400	2,107	9,011	5,407	514	324	10	60
TOTAL FOR PROJ NO. MA10121R						4.39		1	500	100	500	100	600	1.00	96.00	1,296.00	62.00	16.00	1,450.00	400.00	4.00	1,000	1,280	400	2,107	9,011	5,407	514	324	10	60
GRAND TOTAL						4.39		1	500	100	500	100	600	1.00	96.00	1,296.00	62.00	16.00	1,450.00	400.00	4.00	1,000	1,280	400	2,107	9,011	5,407	514	324	10	60

PROJECT NO	COUNTY	MAP NO	ROUTE	DESCRIPTION	TYP NO	LENGTH MI	WIDTH FT	AC PLANT MIX (REPAIR) TONS	PATCHING EXISTING PAVEMENT TONS	INCIDENTAL ASPHALT TON	PIPE COLLARS EA	PIPE PLUGS CY	MASONRY DRAINAGE STR. EA	FRAME & GRATE, DETAIL 840.16 EA	FILTER FABRIC FOR DRAINAGE SY	INCIDENTAL CONCRETE CURB LF	6" DRIVEWAYS SY	ADJUSTMENT OF MANHOLES EA	ADJUSTMENT OF METER OR VALVE BOX EA	PLAIN RIP RAP, CLASS B TONS	PORTABLE LIGHTING EA	RELOCATE EXISTING WATER METER EA	TEMPORARY SILT FENCE LF	STONE FOR EROSION CONTROL, CLASS B TN	SEDIMENT CONTROL STONE TN	SILT EXCAVATION CY	MATTING (EROSION CONTROL) SY	PERMANENT SOIL REINFORCEMENT MAT SY	SEED & MULCHING AC	CONCRETE WHEELCHAIR RAMP EA	FOUNDATION CONDITIONING MATERIAL TON	
MA10121R	Union	1	SECRET SHORTCUT RD.	FROM PVT. JOINT NEAR ROCKY RIVER RD. TO US 74.		4.39	22	80	600	60	1	1	1	1	115	40	500	3	8	40	10	2	5,000	600	300	500	500	500	200	16.0	5.0	156.0
TOTAL FOR PROJ NO. MA10121R						4.39		80	600	60	1	1	1	1	115	40	500	3	8	40	10	2	5,000	600	300	500	500	200	16.0	5.0	156.0	
GRAND TOTAL						4.39		80	600	60	1	1	1	1	115	40	500	3	8	40	10	2	5,000	600	300	500	500	200	16.0	5.0	156.0	

### THERMOPLASTIC AND PAINT QUANTITIES

PROJECT NO	COUNTY	MAP NO	ROUTE	DESCRIPTION	4685000000-E	4686000000-E	4689000000-E	4710000000-E	4725000000-E	4900000000-E	4900000000-E	
					4" X 90 M WHITE THERMO LF	4" X 120 M WHITE THERMO LF	4" X 120 M YELLOW THERMO LF	8" X 90 M YELLOW THERMO LF	24" X 120 M WHITE THERMO LF	THERMO LT ARROW 90 M EA	RAISED PAVEMENT MARKERS (YELLOW & YELLOW) EA	RAISED PAVEMENT MARKERS (CRYSTAL & RED) EA
MA10121R	Union	1	SECRET SHORTCUT RD.	FROM PVT. JOINT NEAR ROCKY RIVER RD. TO US 74.	46,500	1,000	46,500	800	30	12	250	50
TOTAL FOR PROJ NO. MA10121R					46,500	1,000	46,500	800	30	12	250	50
GRAND TOTAL					46,500	1,000	46,500	800	30	12	250	50

### Storm Drain Pipe MA10121R Part B Secret Shortcut Road from SR 1582 (Rocky River Rd.) to US 74

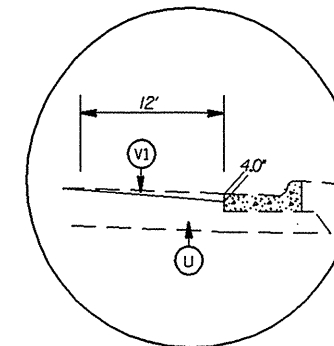
Station	Size & Type of Pipe	Pipe to be added
326+59	18" Concrete	4'
333+86	18" Concrete	4'
346+32	15" Concrete	8'
369+62	18" Concrete	4'
372+83	24" Concrete	8'
380+91	18" Concrete	8'
396+45	18" Concrete	8'
403+90	18" Concrete	4'
419+86	18" Concrete	12'
425+55	18" Concrete	6'
441+11	15" Concrete	8'
444+00	18" Concrete	8'
470+31 *	24" Concrete	8'
475+81 *	15" Concrete	8'
489+95		Drainage Structure
508+70	18" Concrete	4'
524+48	15" Concrete	0'
536+61	15" Concrete	0'

\* Denotes locations with environmental permits

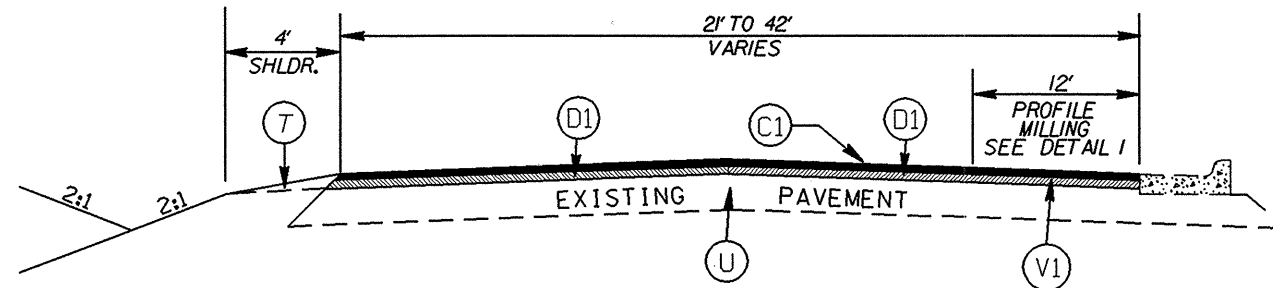
This list does not include driveway pipe. All driveway pipes are to be replaced where the ditch is being moved.

STATE	PROJECT NO.	SHEET NO.	TOTAL SHEETS
N.C.	MA 10121R	3	
F.A. PROJECT NO.			

### DETAIL 1



DETAIL 1 FOR PROFILE MILLING (0' TO 4.0')

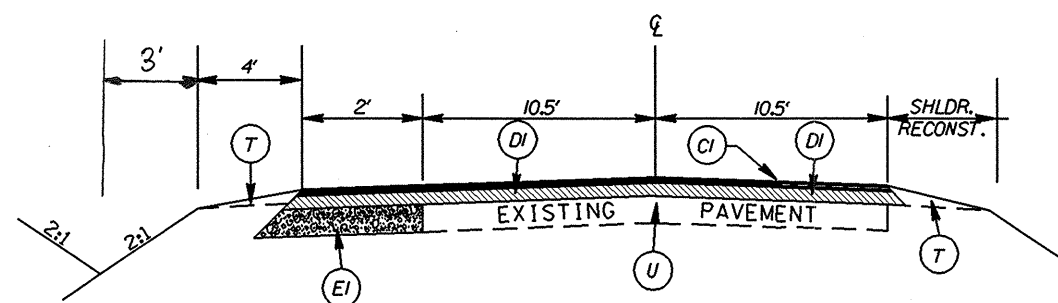


### TYPICAL SECTION 2

STA. 471+39 TO STA. 473+95  
 STA. 489+00 TO STA. 499+00  
 STA. 539+61 TO STA. 550+52

### PAVEMENT SCHEDULE

(C1)	PROP. APPROX. 1.5" ASPHALT CONC. SURFACE COURSE, TYPE S9.5C, AT AN AVERAGE RATE OF 168 LBS. PER SQ. YD.
(D1)	PROP. APPROX. 2.5" ASPHALT CONC. BINDER COURSE, TYPE I19.0C, AT AN AVERAGE RATE OF 285 LBS. PER SQ. YD.
(E1)	PROP. APPROX. 6" ASPHALT CONC. BASE COURSE, TYPE B25.0C, AT AN AVERAGE RATE OF 342 LBS. PER SQ. YD. IN EACH OF TWO LAYERS.
(V1)	PROP. VARIABLE DEPTH PROFILE MILLING 0" - 4.0"
(T)	EARTH MATERIAL
(U)	EXISTING PAVEMENT



### TYPICAL SECTION 1

STA. 318+73 TO STA. 471+39  
 STA. 473+95 TO STA. 489+00  
 STA. 499+00 TO STA. 539+61


MA10121R PART B  
 SECREST SHORTCUT RD. (SR 1501)  
 FROM ROCKY RIVER RD. TO US 74

SECREST SHORTCUT RD. (SR 1501)  
 IN UNION CO. (PART B)

SCALE	-NA-		REVISIONS
DATE	7/06		
DWG. BY	RWB		
DESIGN BY	TLR		
APPROVED	TLR		

# TWO LANE, TWO WAY WORK ZONE (L-LINES)

FURNISHED BY THE DEPARTMENT

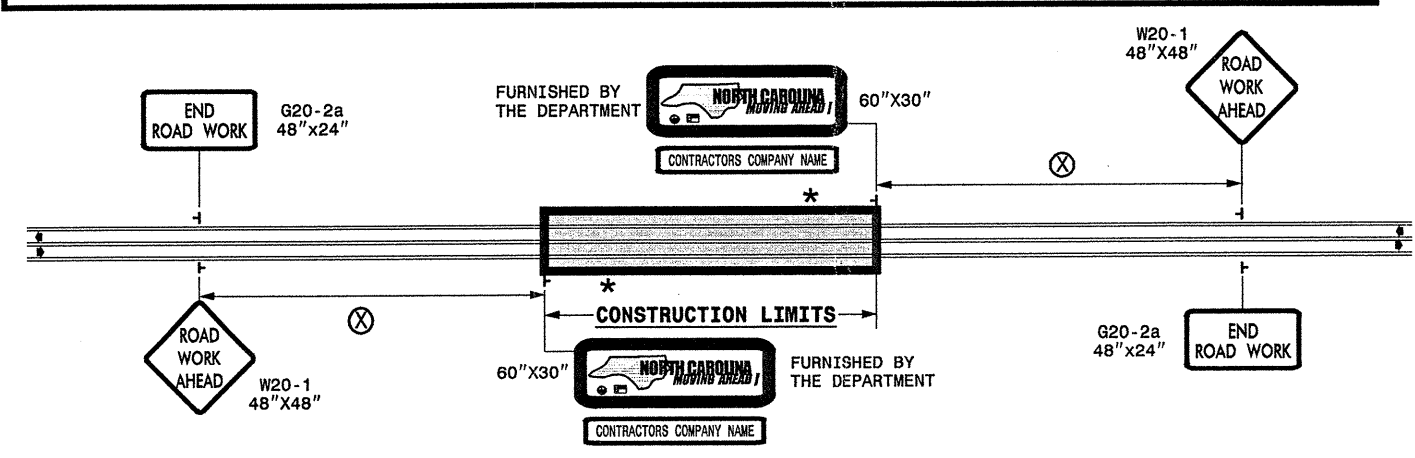


60" X 30"

---

CONTRACTORS COMPANY NAME

60" Max. X 12"



POSTED SPEED LIMIT (M.P.H.)	RECOMMENDED MINIMUM SIGN SPACING
P.S.L. ≤ 50	350'
P.S.L. ≥ 55	500'

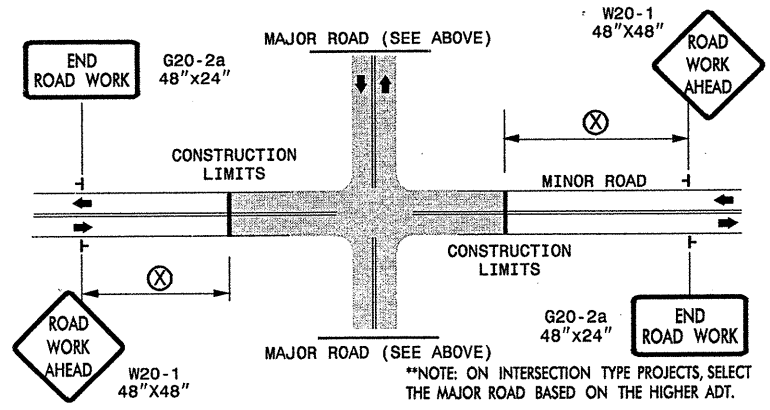
\* ROAD WORK NEXT XX MILES G20-1A 60" X 24"

THIS SIGN TO BE USED ON PROJECTS LONGER THAN 2 MILES  
 THE NUMBER DISPLAYED ON THE SIGN IS TO BE A WHOLE NUMBER ROUNDED UP TO THE NEXT MILE  
 IT'S TO BE LOCATED 1,500 FEET INSIDE OF THE CONSTRUCTION LIMITS

PROJ. REFERENCE NO. WBS 37687	SHEET NO. NCMA-1
----------------------------------	---------------------

STATE OF NORTH CAROLINA  
 DEPT. OF TRANSPORTATION  
 DIVISION OF HIGHWAYS  
 RALEIGH, N.C.

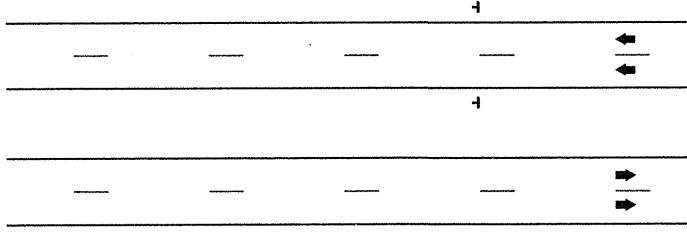
# INTERSECTIONS (-Y- LINES)



# FREEWAYS / INTERSTATES

DUAL MOUNT "ROAD WORK AHEAD" SIGNS 1,000' IN ADVANCE OF PROJECT LIMITS

DUAL MOUNT "MOVING AHEAD" SIGNS 500' IN ADVANCE OF PROJECT LIMITS



## GENERAL NOTES

- USE FLUORESCENT ORANGE SHEETING (TYPE VII OR HIGHER) ON ALL ADVANCED WORK ZONE SIGNS.
- DO NOT INSTALL ADVANCE WARNING SIGNS MORE THAN 3 DAYS PRIOR TO BEGINNING OF WORK.
- SIGNS SHOWN ARE REQUIRED FOR WORK ZONES THAT WILL REMAIN IN EFFECT OVERNIGHT. FOR SHORT-TERM DAILY MAINTENANCE TYPE OPERATIONS, THIS SIGNING APPLICATION IS OPTIONAL; MAY USE ONLY APPLICABLE ROADWAY STANDARD DRAWINGS INSTEAD. HOWEVER, IF THIS SIGNING APPLICATION IS USED, SIGNS MAY BE PORTABLE MOUNTED. USE PORTABLE WORK ZONE SIGNS ONLY WITH PORTABLE WORK ZONE SIGN STANDS SPECIFICALLY DESIGNED FOR ONE ANOTHER. PORTABLE WORK ZONE SIGNS MAY BE ROLL UP OR APPROVED COMPOSITE.
- ALL SIGN SPACING DIMENSIONS ARE APPROXIMATE, FIELD ADJUST AS NECESSARY OR AS DIRECTED.
- USE 3LB STEEL U-CHANNEL POST OR 4" X 4" WOOD POST FOR ALL WORK ZONE SIGNS. 3LB STEEL U-CHANNEL POSTS MUST MEET THE REQUIREMENTS OF STANDARD SPECIFICATION SECTION 1094-1(B), MAY BE GALVANIZED STEEL, OR MAY BE PAINTED GREEN BY THE POST MANUFACTURER. SQUARE STEEL TUBING POSTS HAVING EQUIVALENT STRENGTH OF THE 3 LB STEEL U-CHANNEL POST ARE ALSO ACCEPTABLE FOR USE. ERECT SIGNS PER ROADWAY STANDARD DRAWING 1110.01. PAYMENT FOR WOOD POSTS, 3LB STEEL U-CHANNEL AND SQUARE STEEL TUBING POSTS WITH SIGNS WILL BE MADE ACCORDING TO STANDARD SPECIFICATION "WORK ZONE SIGNS" SECTION 1110.
- WHEN NECESSARY, USE SPLICING IN ACCORDANCE WITH ROADWAY STANDARD DRAWING NO. 1110.01. REMOVE ENTIRE POST WHEN REMOVING SIGNS WITH SPLICED POSTS.
- DO NOT BACK BRACE SIGN SUPPORTS.

**LEGEND**

┆ STATIONARY SIGN

◀ DIRECTION OF TRAFFIC FLOW

SHEET 1 OF 1

APPROVED: _____	DATE: _____	<b>ADVANCE WARNING WORK ZONE SIGNS FOR "MOVING AHEAD"</b>	
SEAL	SCALE: NONE	REVISIONS	
	DATE: 07/03	11/04	
	DWG. BY: JSK	12/04	
	DESIGN BY: JSK		
	REVIEWED BY: SK		