

TIP PROJECT: R-4434

CONTRACT: C201190

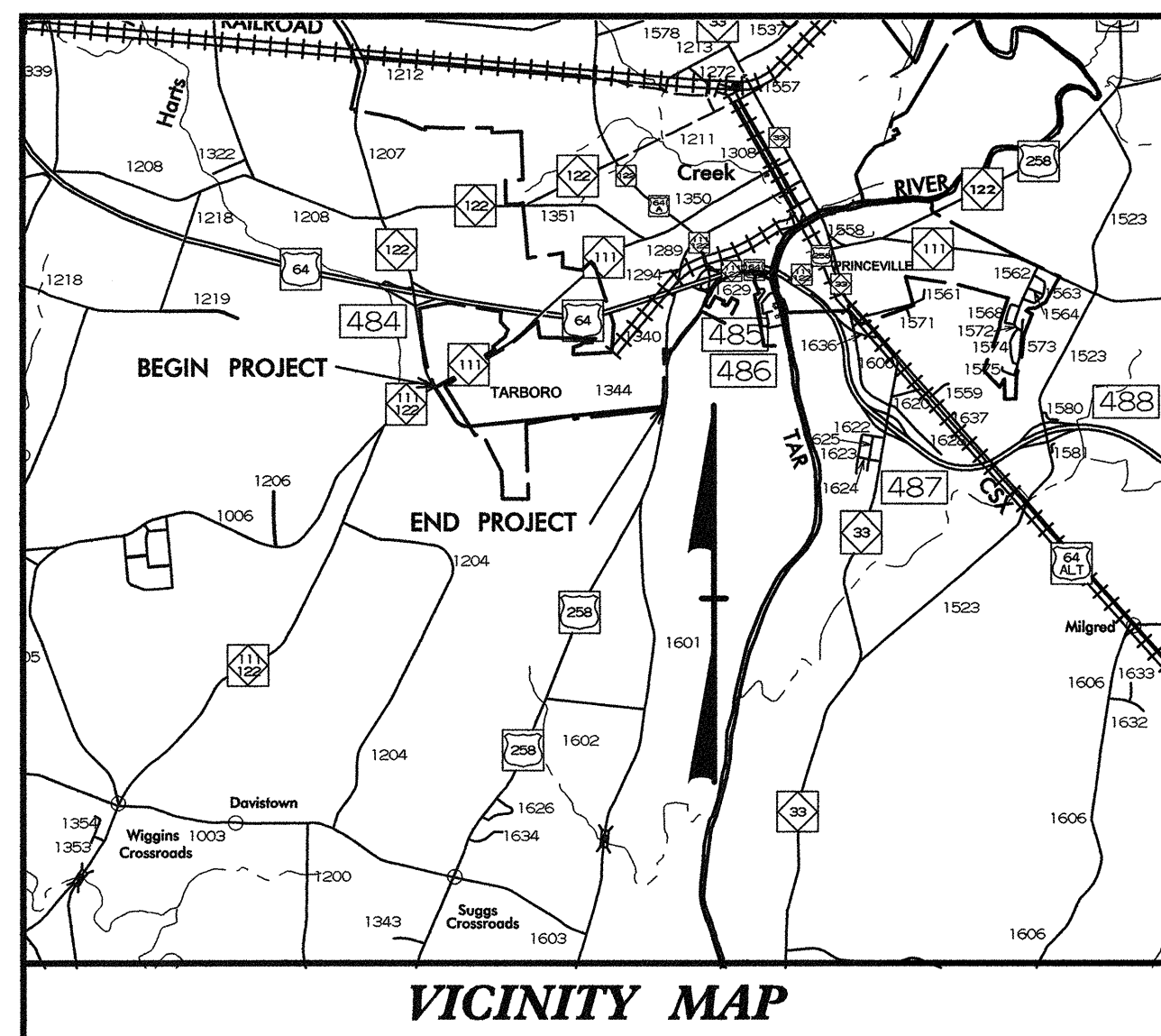
| | |
|------------|-----------|
| T.I.P. NO. | SHEET NO. |
| R-4434 | UC-0 |

STATE OF NORTH CAROLINA
DIVISION OF HIGHWAYS

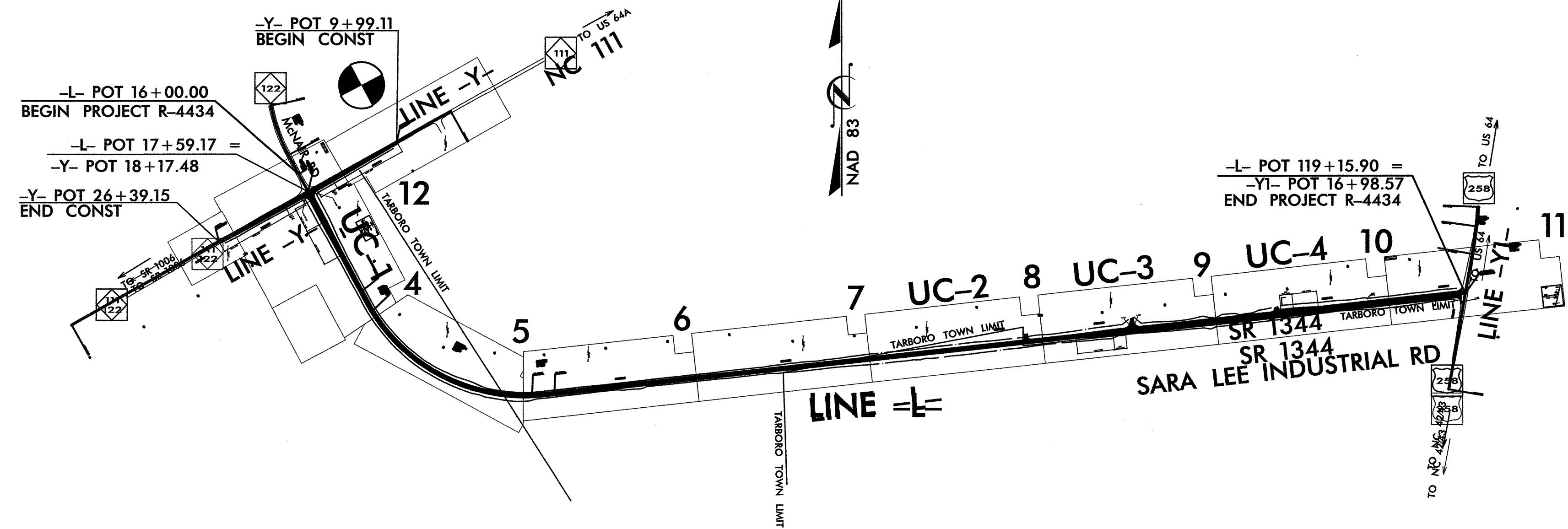
EDGEcombe COUNTY

TIP PROJECT R-4434 LOCATION: McNAIR ROAD EXTENSION FROM NC 111/22 TO US 258.

TYPE OF WORK: UTILITY RELOCATION



VICINITY MAP



| INDEX OF SHEETS | |
|-----------------|------------------------------------|
| SHEET NO. | DESCRIPTION |
| UC-0 | TITLE SHEET |
| UC-1 THRU UC-4 | UTILITY CONST. PLAN/PROFILE SHEETS |
| UC-5 | DETAIL SHEET |

WATER OWNERS ON PROJECT

(1) WATER: TOWN OF TARBORO

SEAL

UTILITY CONSTRUCTION PLANS PREPARED BY:

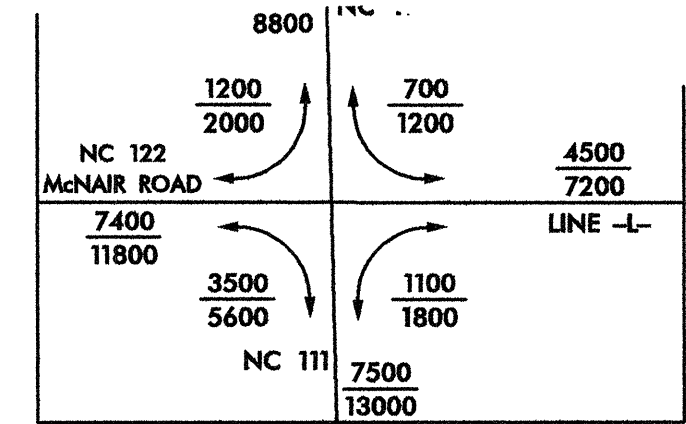
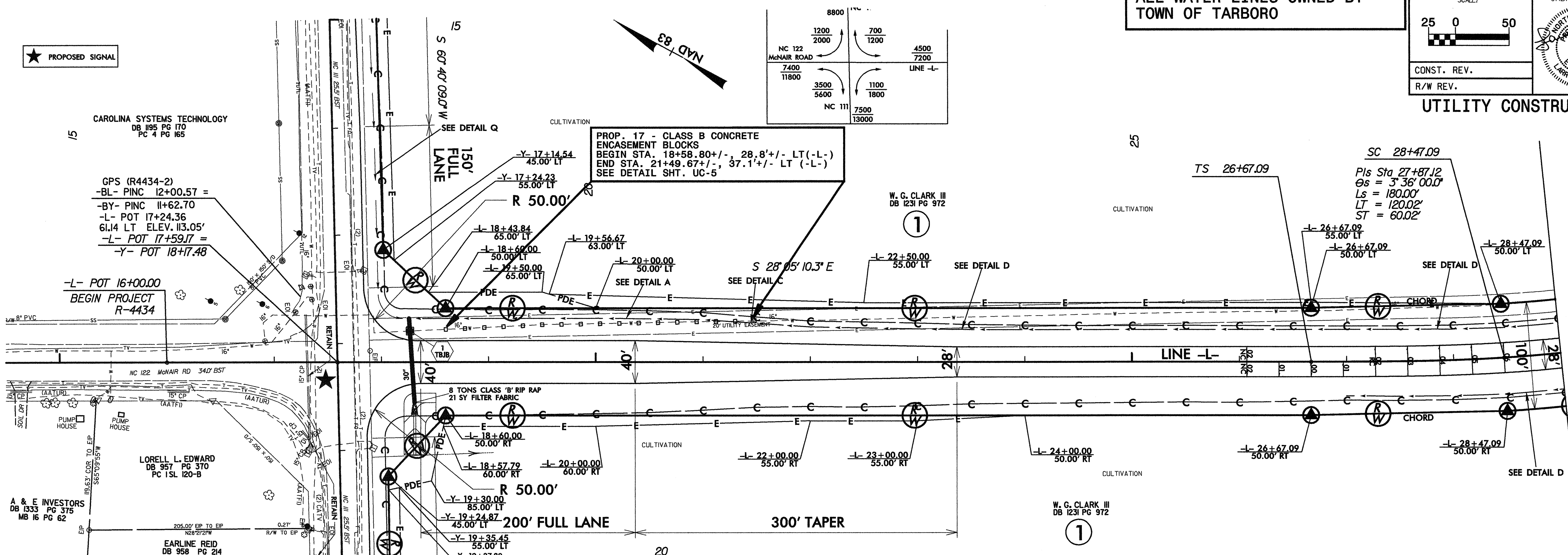
MULKEY
ENGINEERS & CONSULTANTS

PO Box 33127
RALEIGH, N.C. 27636
(919) 851-1912
(919) 851-1918 (FAX)
WWW.MULKEYINC.COM

ALL WATER LINES OWNED BY TOWN OF TARBORO

| | |
|---------------------------------|---|
| PROJECT REFERENCE NO. R-4434 | SHEET NO. UC-1 |
| SCALE: 25 0 50 | UTILITY ENGINEER W. G. CLARK III DB 1231 PG 972 SEAL 23082 ENGINEER MARY S. GIBSON 8-16-06 |
| CONST. REV. | |
| R/W REV. | |

UTILITY CONSTRUCTION



GPS (R4434-2)
 -BL- PINC 12+00.57 =
 -BY- PINC 11+62.70
 -L- POT 17+24.36
 61.14 LT ELEV. 113.05'
 -L- POT 17+59.17 =
 -Y- POT 18+17.48

-L- POT 16+00.00
 BEGIN PROJECT
 R-4434

LORELL L. EDWARD
 DB 957 PG 370
 PC 15L 120-B

EARLINE REID
 DB 958 PG 214
 PC 15L 120-B

A & E INVESTORS
 DB 1333 PG 375
 MB 16 PG 62

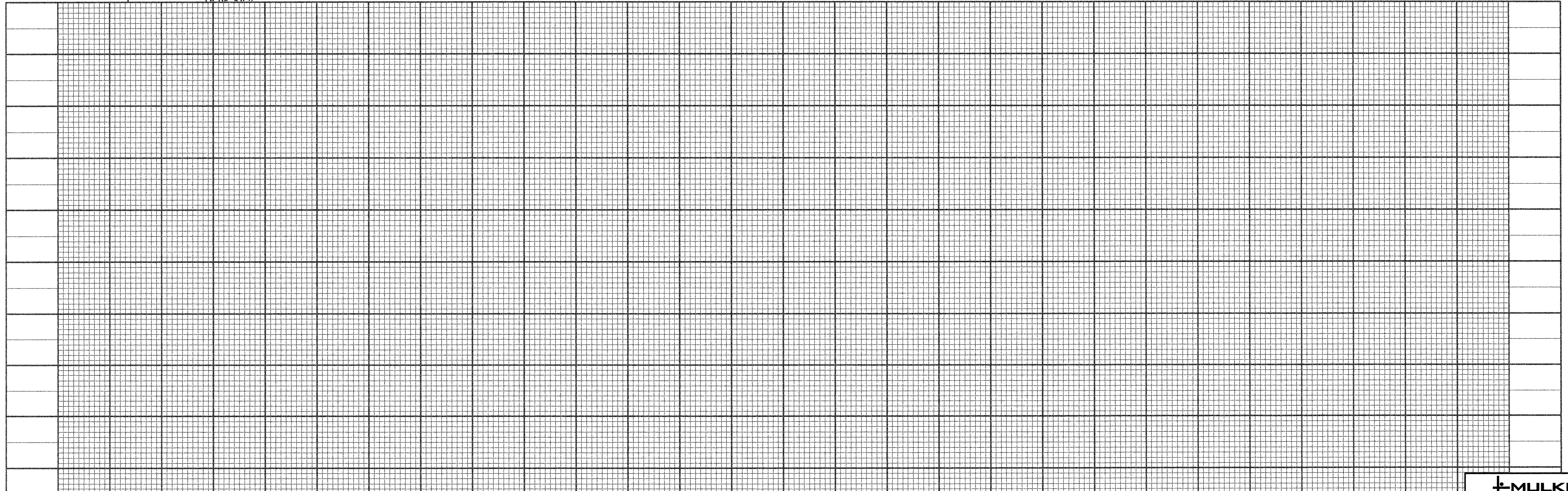
PROP. 17 - CLASS B CONCRETE
 ENCASUREMENT BLOCKS
 BEGIN STA. 18+58.80 +/-, 28.8' +/- LT (-L-)
 END STA. 21+49.67 +/-, 37.1' +/- LT (-L-)
 SEE DETAIL SHT. UC-5

SC 28+47.09
 Pls Sta 27+87.12
 @s = 3'36"00.0"
 Ls = 180.00'
 LT = 120.02'
 ST = 60.02'

SEE DETAIL D

SEE DETAIL D

SEE DETAIL D



ALL WATER LINES OWNED BY TOWN OF TARBORO

| | |
|---------------------------------|---|
| PROJECT REFERENCE NO. R-4434 | SHEET NO. UC-2 |
| SCALE: 25 0 50 | UTILITY ENGINEER NORTH CAROLINA SEAL 23082 LARRY S. GIBSON 8-16-06 |
| CONST. REV. | |
| R/W REV. | |

UTILITY CONSTRUCTION

PROP. 2 - CLASS B CONCRETE ENCASEMENT BLOCKS
BEGIN STA. 72+91.56 +/-, 35.91 +/- LT. (-L-)
END STA. 73+09.56 +/-, 35.61 +/- LT. (-L-)
SEE DETAIL SHT UC-5

PROP. 7 - CLASS B CONCRETE ENCASEMENT BLOCKS
BEGIN STA. 74+53.63 +/-, 32.91 +/- LT. (-L-)
END STA. 75+64.87 +/-, 36.10 +/- LT. (-L-)
SEE DETAIL SHT. UC-5

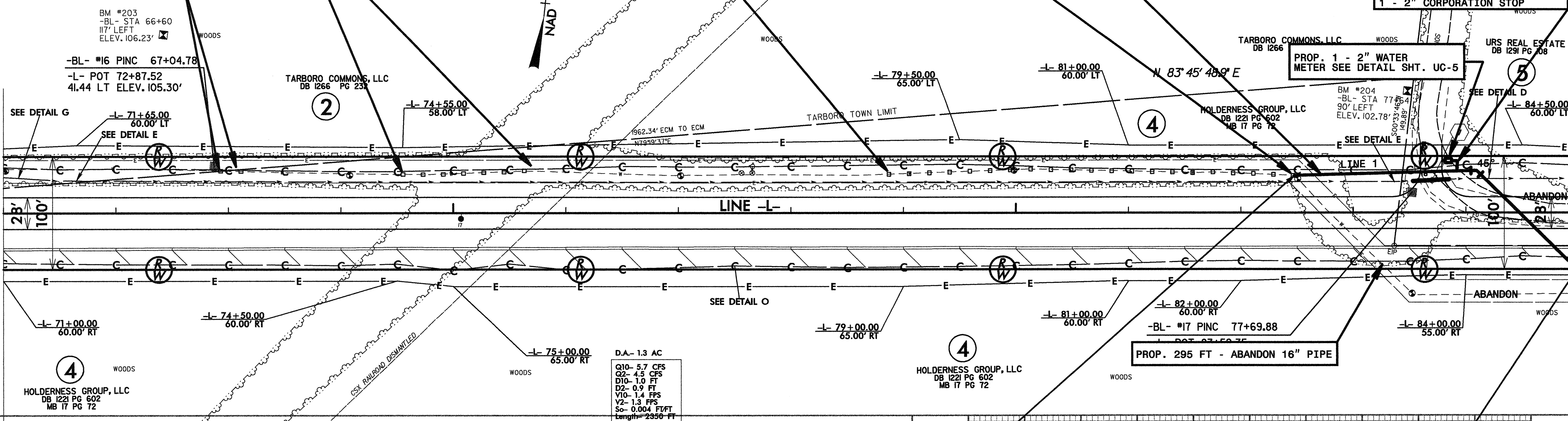
PROP. 21 - CLASS B CONCRETE ENCASEMENT BLOCKS
BEGIN STA. 78+85.67 +/-, 32.72 +/- LT. (-L-)
END STA. 82+47.81 +/-, 33.09 +/- LT. (-L-)
SEE DETAIL SHT. UC-5

PROP. 288 FT - 16" DI RESTRAINED JOINT WATER PIPE, CLASS 50
1 - 45° DI BEND
CONNECT USING NECESSARY FITTINGS

PROP. 16 FT - 2" COPPER WATER PIPE, TYPE K
1 - 2" CORPORATION STOP

PROP. 1 - 2" WATER METER SEE DETAIL SHT. UC-5

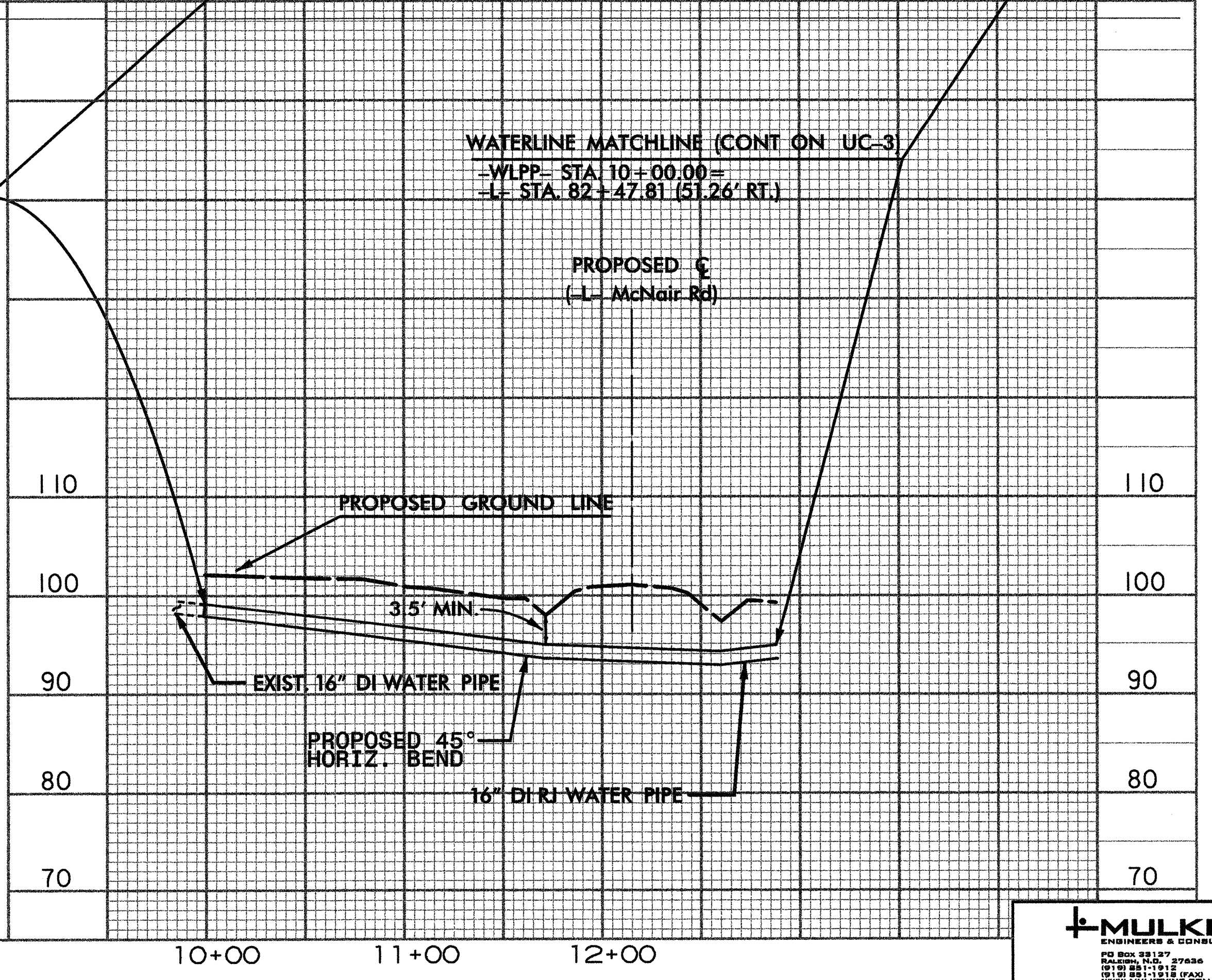
PROP. 295 FT - ABANDON 16" PIPE



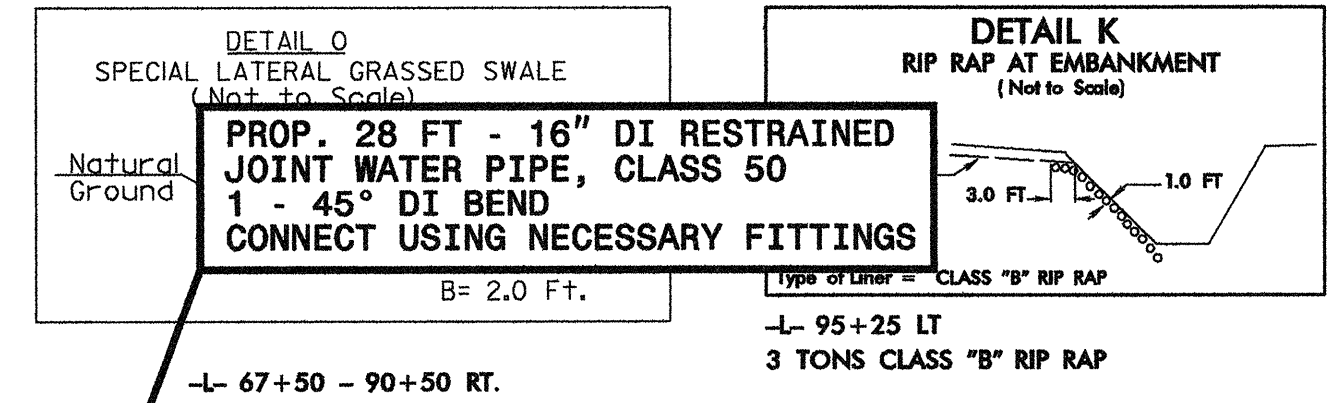
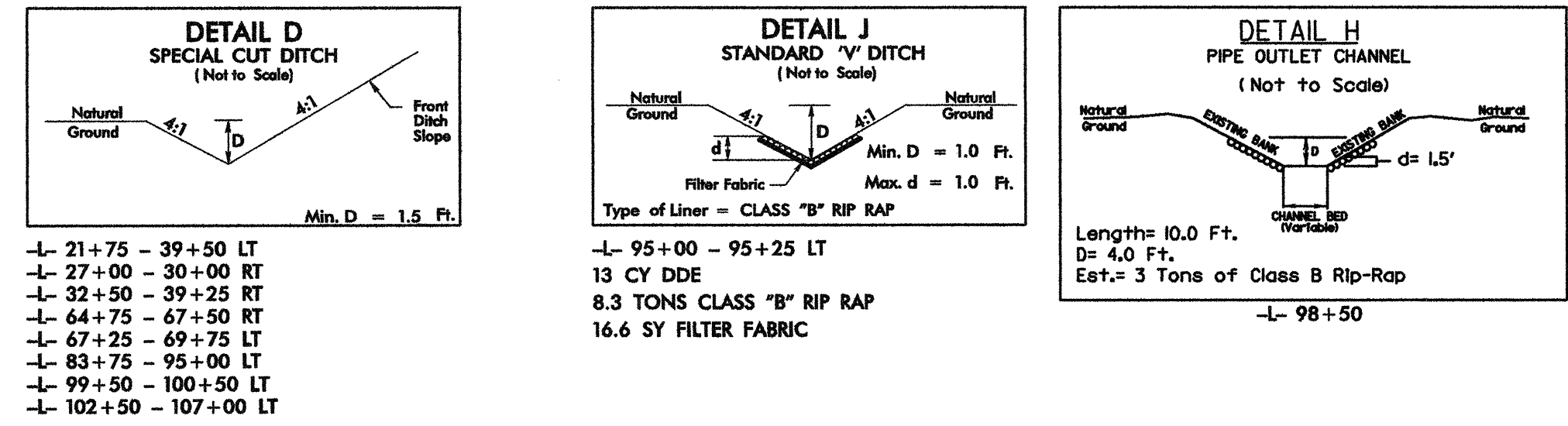
D.A. - 1.3 AC
Q10 - 5.7 CFS
Q2 - 4.5 CFS
D10 - 1.0 FT
D2 - 0.9 FT
V10 - 1.4 FPS
V2 - 1.3 FPS
So - 0.004 FV/FT
Length - 2350 FT

CONNECT TO EXISTING WATERLINE
-WLPP- STA. 10+00.00=
-L- STA. 82+47.81 (33.08' LT.)

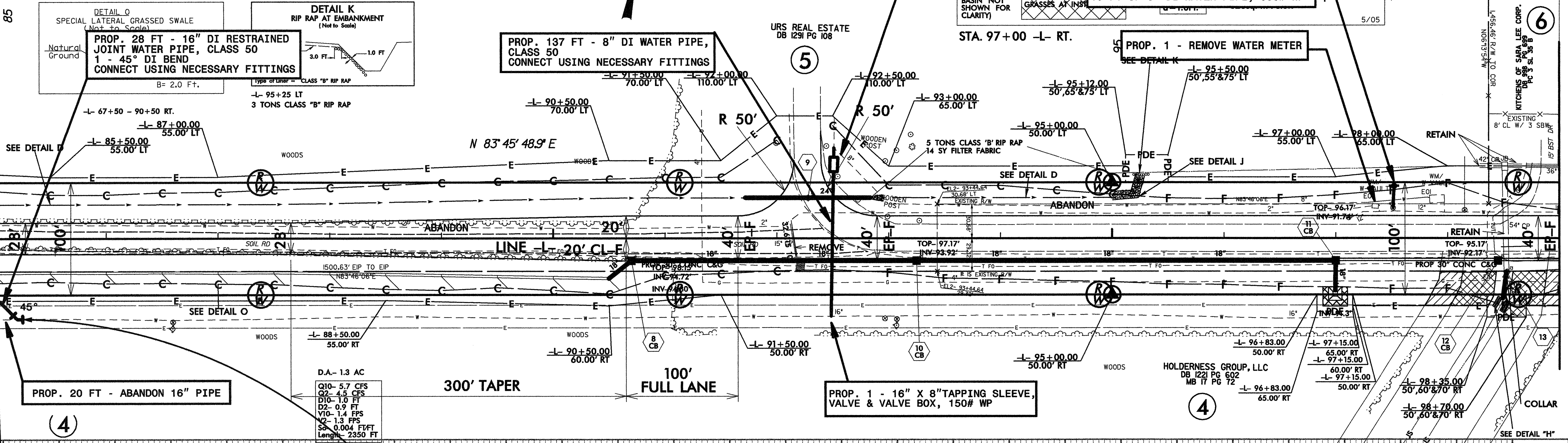
WATERLINE MATCHLINE (CONT ON UC-3)
-WLPP- STA. 10+00.00=
-L- STA. 82+47.81 (31.26' RT.)



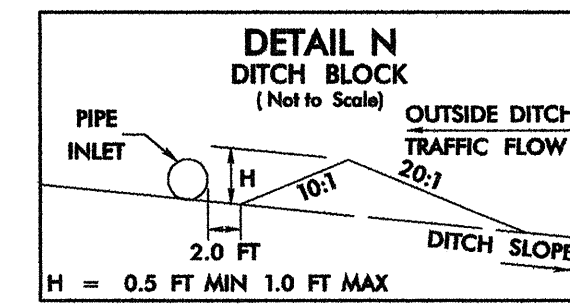
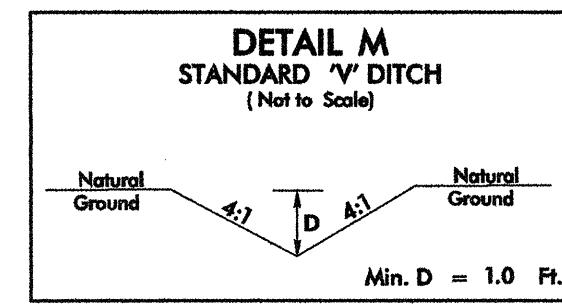
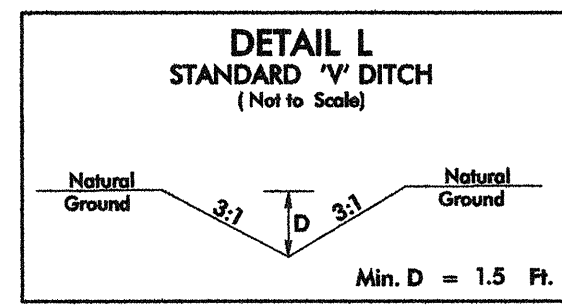
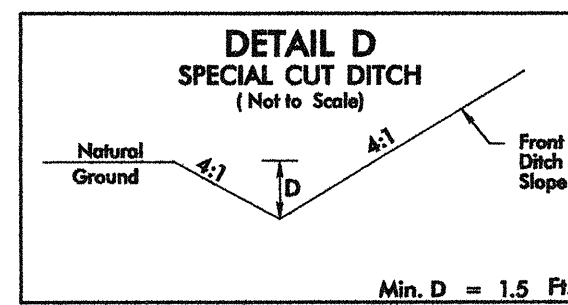
Match Line Sheet UC-3
-L- Sta. 85+00.00



Match Line Sheet UC-2
-L- Sta. 85+00.00



Match Line Sheet UC-4
-L- Sta. 100+00.00



ALL WATER LINES OWNED BY TOWN OF TARBORO

PROJECT REFERENCE NO. R-4434
 SCALE: 25 0 50
 SHEET NO. UC-4
 UTILITY ENGINEER
 NORTA CAROLINA PROFESSIONAL SEAL 23082
 ENGINEER HARRY S. GIBSON
 CONST. REV.
 R/W REV.
 UTILITY CONSTRUCTION

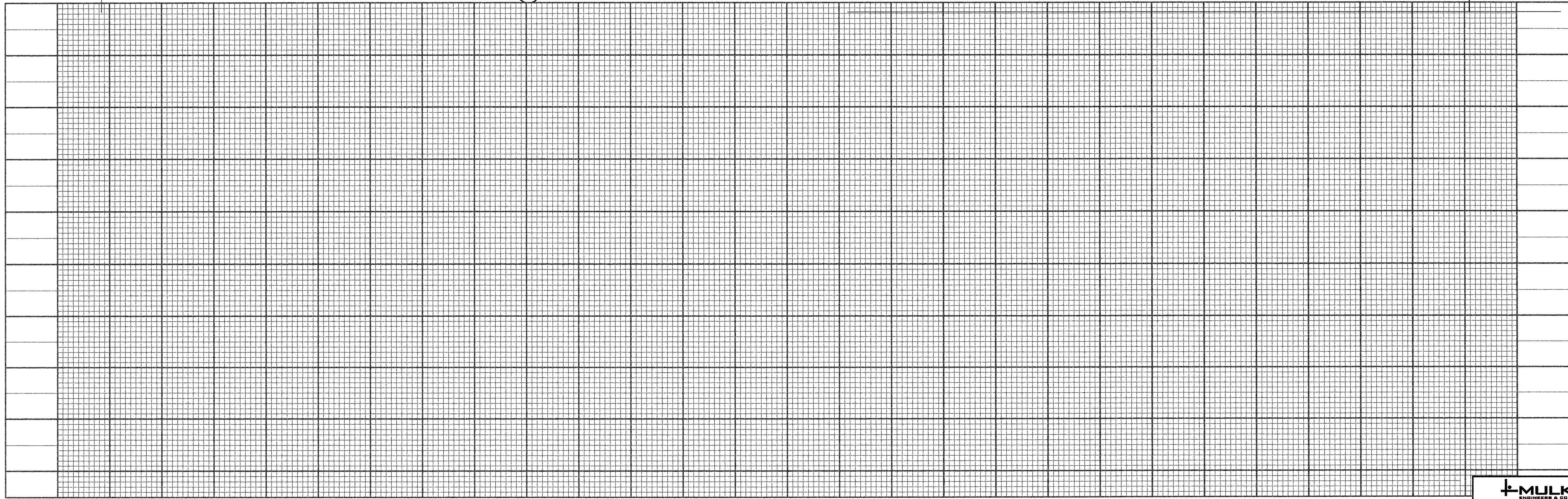
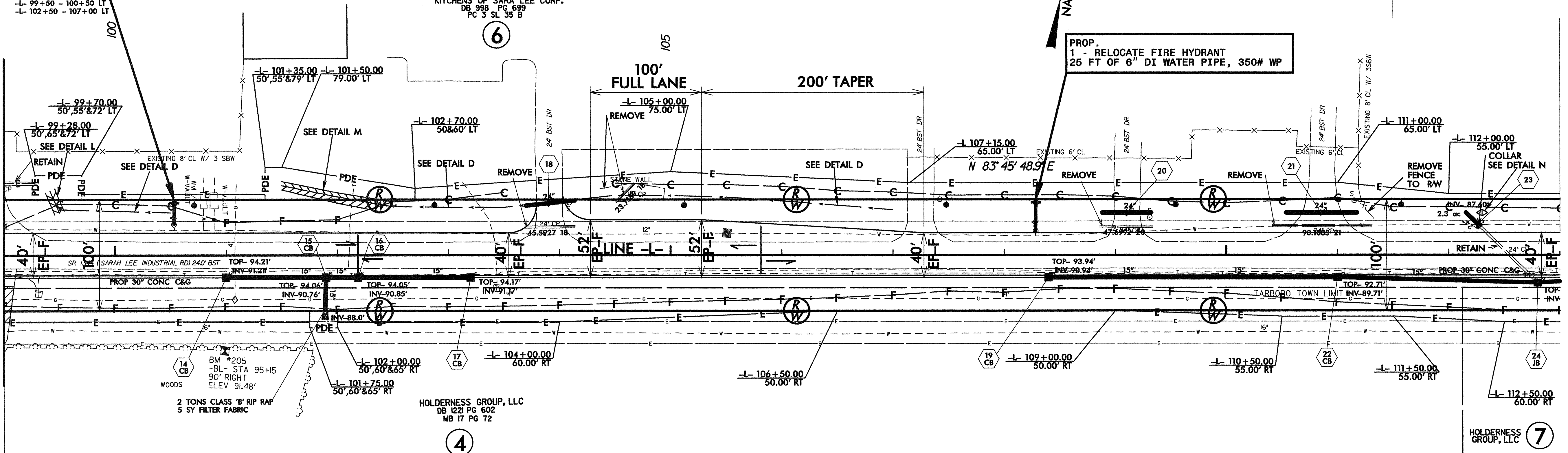
1 - 21+75 - 39+50 LT
 1 - 27+00 - 30+00 RT
 1 - 32+50 - 39+25 RT
 1 - 64+75 - 67+50 RT
 1 - 67+25 - 69+75 LT
 1 - 83+75 - 95+00 LT
 1 - 99+50 - 100+50 LT
 1 - 102+50 - 107+00 LT

PROP.
 1 - RELOCATE FIRE HYDRANT
 19 FT OF 6" DI WATER PIPE, 350# WP

KITCHENS OF SARA LEE CORP.
 DB 998 PG 699
 PC 3 SL 35 B

PROP.
 1 - RELOCATE FIRE HYDRANT
 25 FT OF 6" DI WATER PIPE, 350# WP

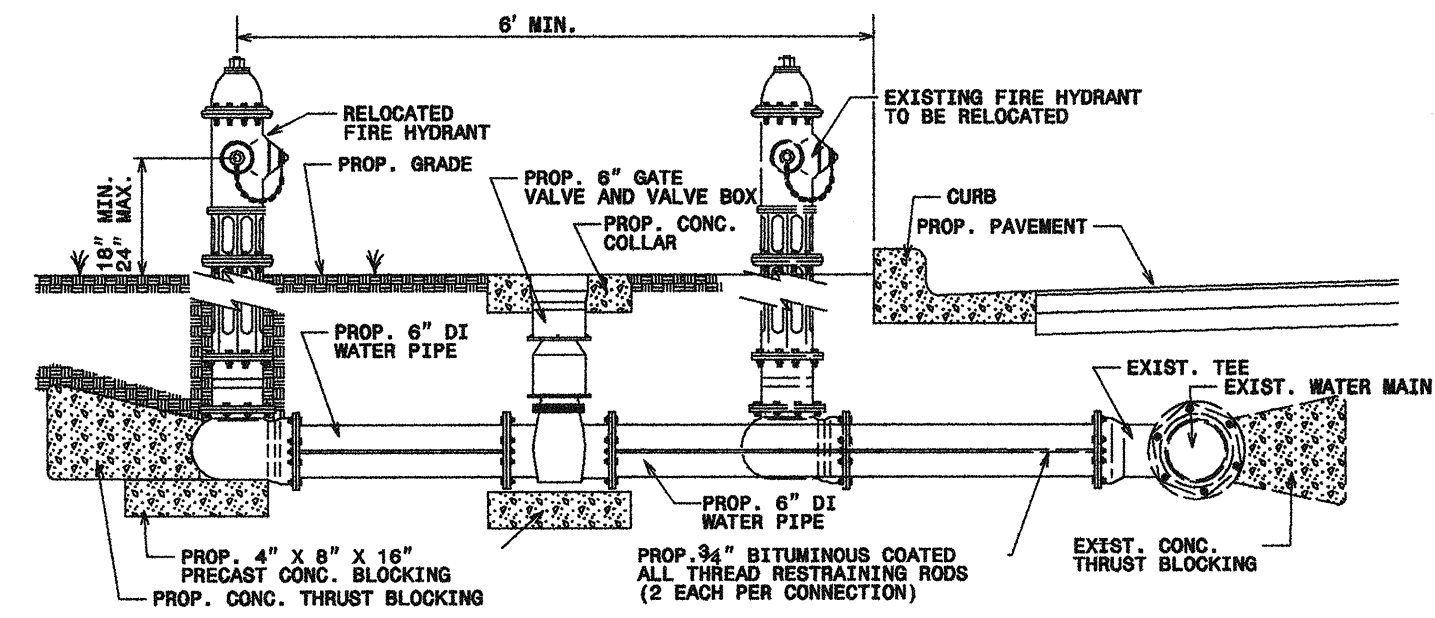
Match Line Sheet UC-3
 -L- Sta. 100+00.00



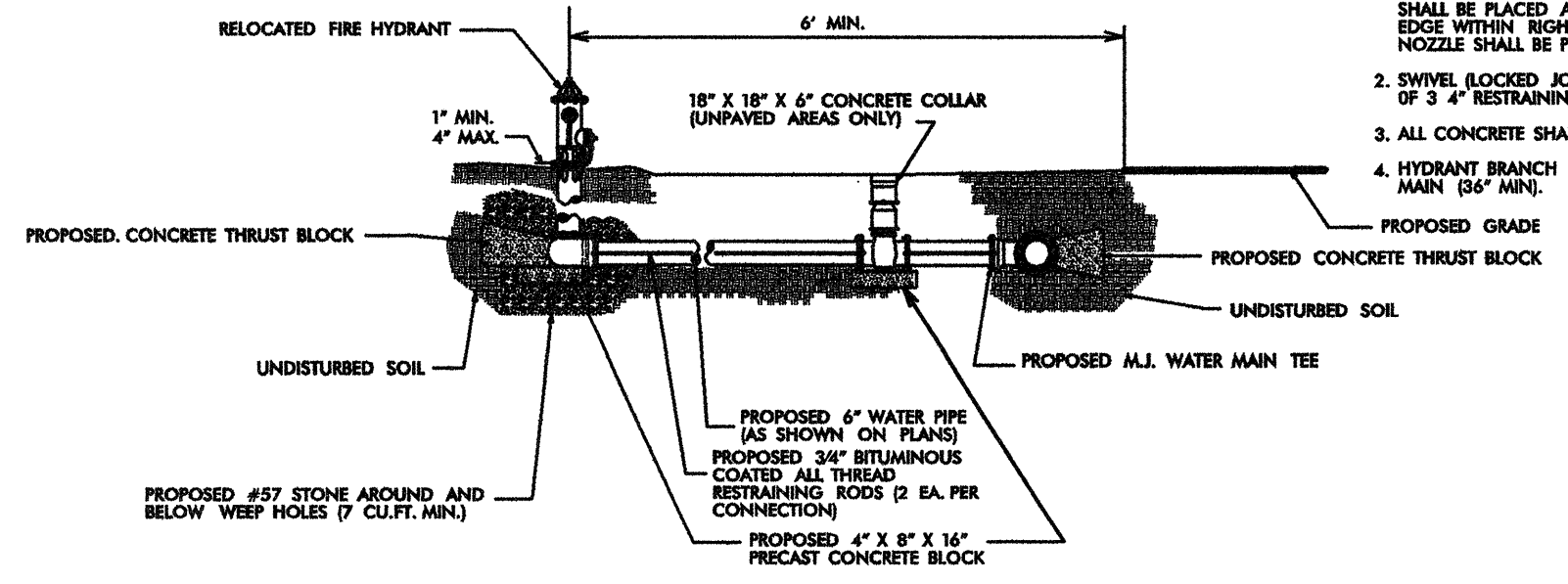
ALL WATER LINES OWNED BY TOWN OF TARBORO

| | |
|---------------------------------|---|
| PROJECT REFERENCE NO. R-4434 | SHEET NO. UC-5 |
| SCALE: N.T.S. | UTILITY ENGINEER SEAL 23082 LARRY S. GIBSON 8-10-06 |
| CONST. REV. | |
| R/W REV. | |

UTILITY CONSTRUCTION

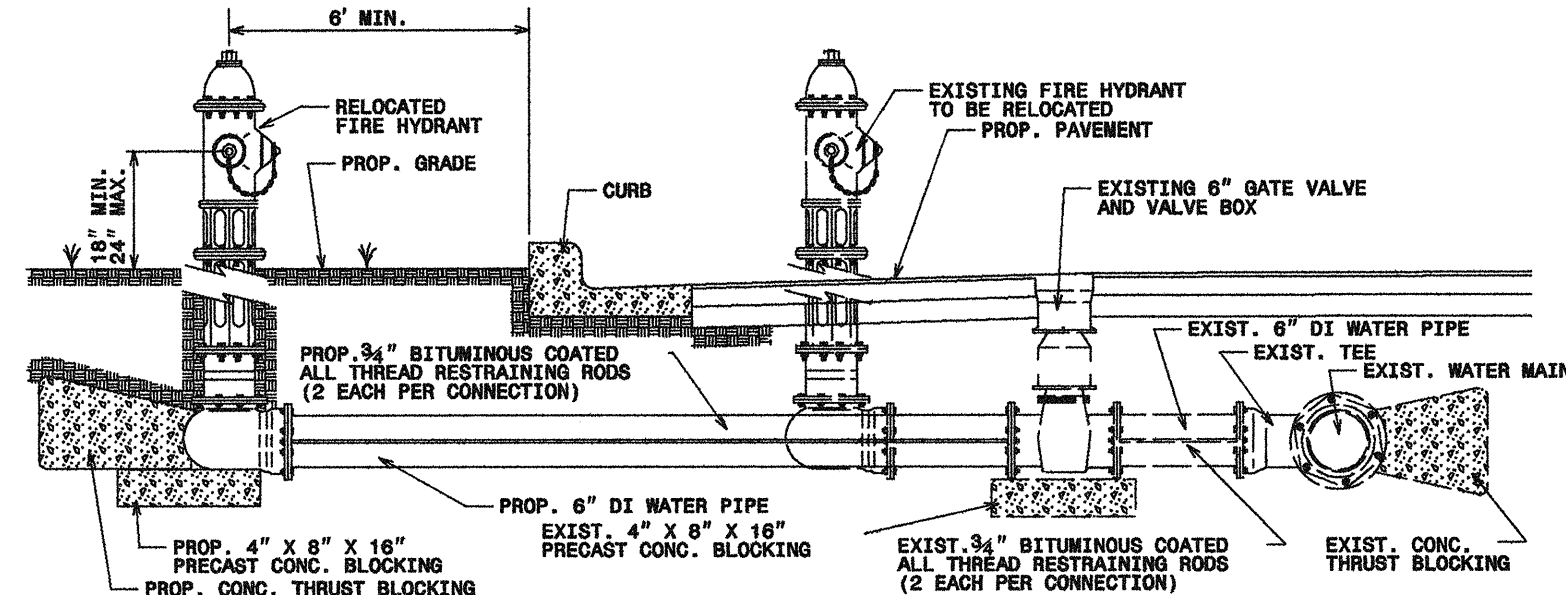


FIRE HYDRANT RELOCATION DETAIL
NOT TO SCALE

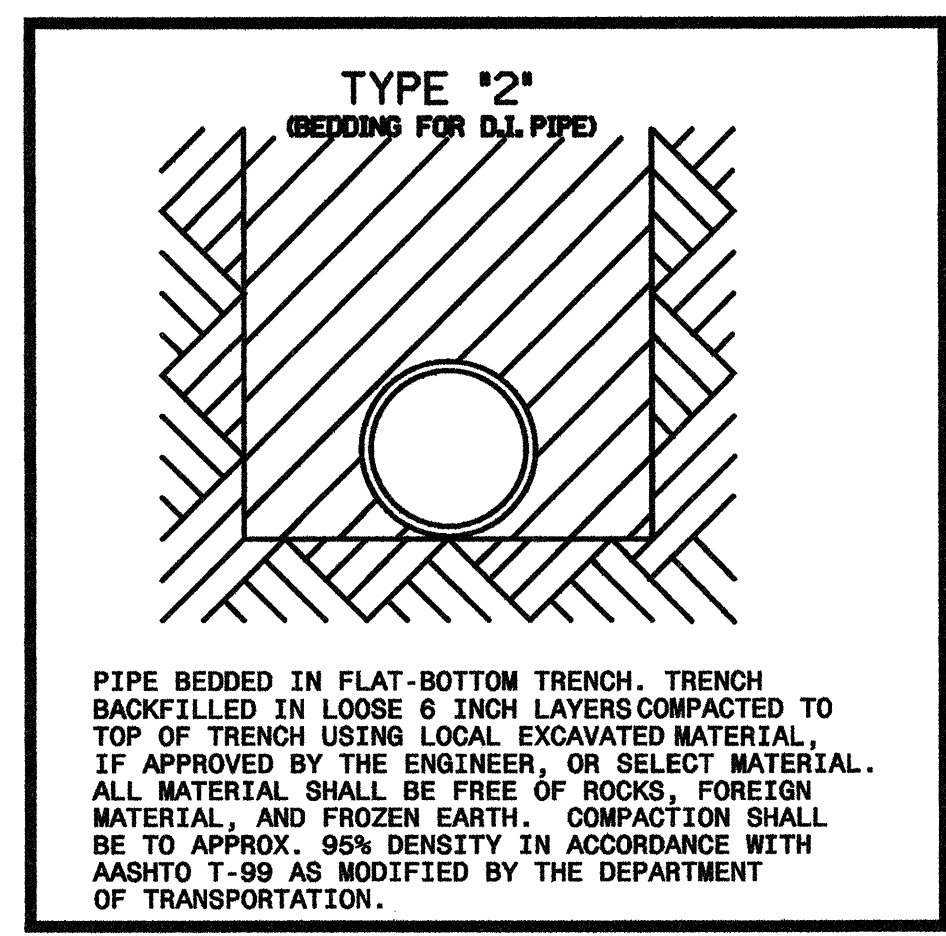


FIRE HYDRANT RELOCATION DETAIL
NOT TO SCALE

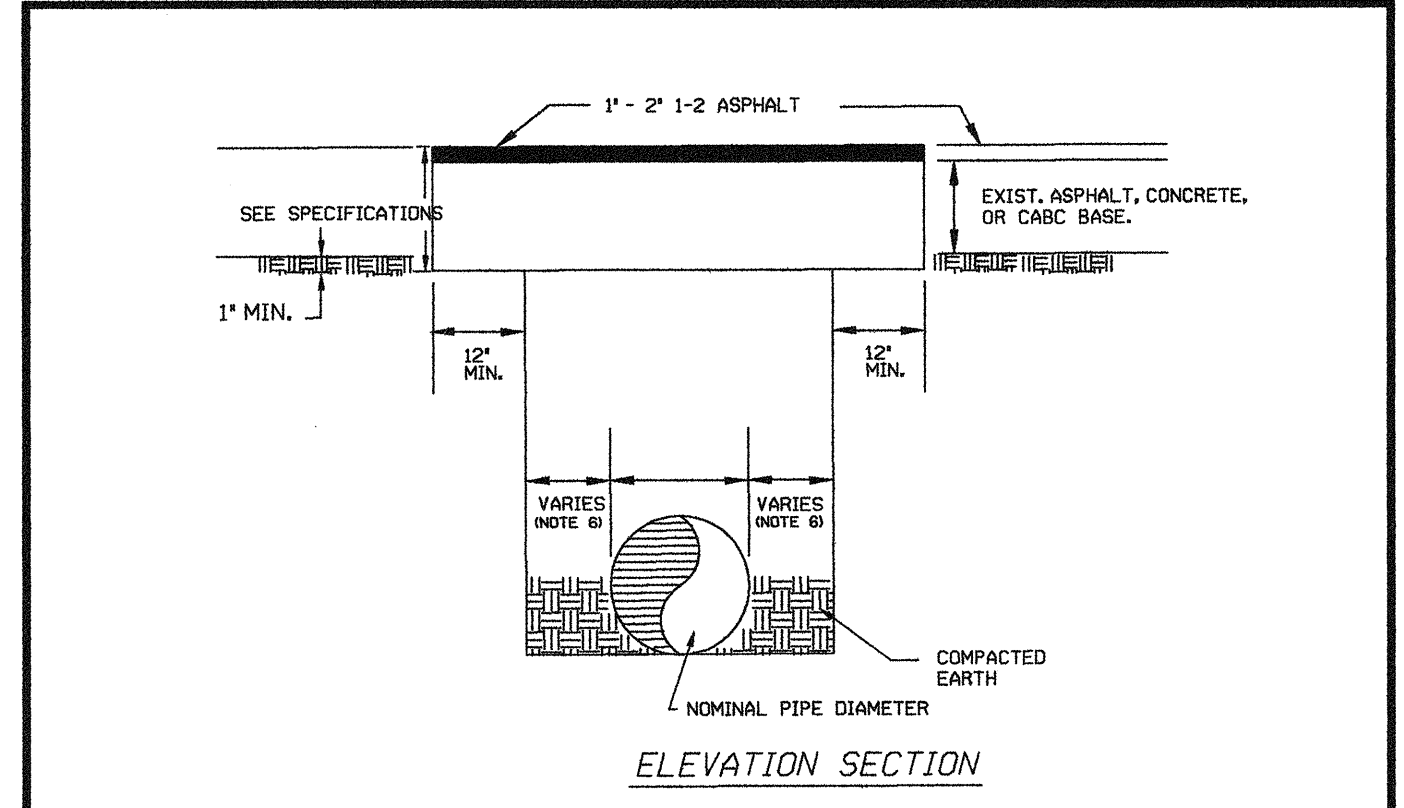
- GENERAL NOTES:
- RELOCATED FIRE HYDRANTS SHALL BE PLACED A MINIMUM DISTANCE OF 6 FEET BACK OF CURB IN CURB AND GUTTER SECTIONS AND 8 FEET BACK OF DITCH IN ROADWAY SECTIONS. WHERE THERE IS NO DITCH, THE HYDRANT SHALL BE PLACED AS FAR AS POSSIBLE FROM THE PAVEMENT EDGE WITHIN RIGHT OF WAY CURB LIMITS. PUMP NOZZLE SHALL BE PERPENDICULAR TO ROADWAY.
 - SWIVEL LOCKED JOINTS FITTINGS MAY BE USED IN LIEU OF 3" RESTRAINING RODS.
 - ALL CONCRETE SHALL BE CLASS "B".
 - HYDRANT BRANCH LINE SHALL HAVE THE SAME COVER AS THE MAIN (36" MIN.).



FIRE HYDRANT RELOCATION DETAIL
NOT TO SCALE

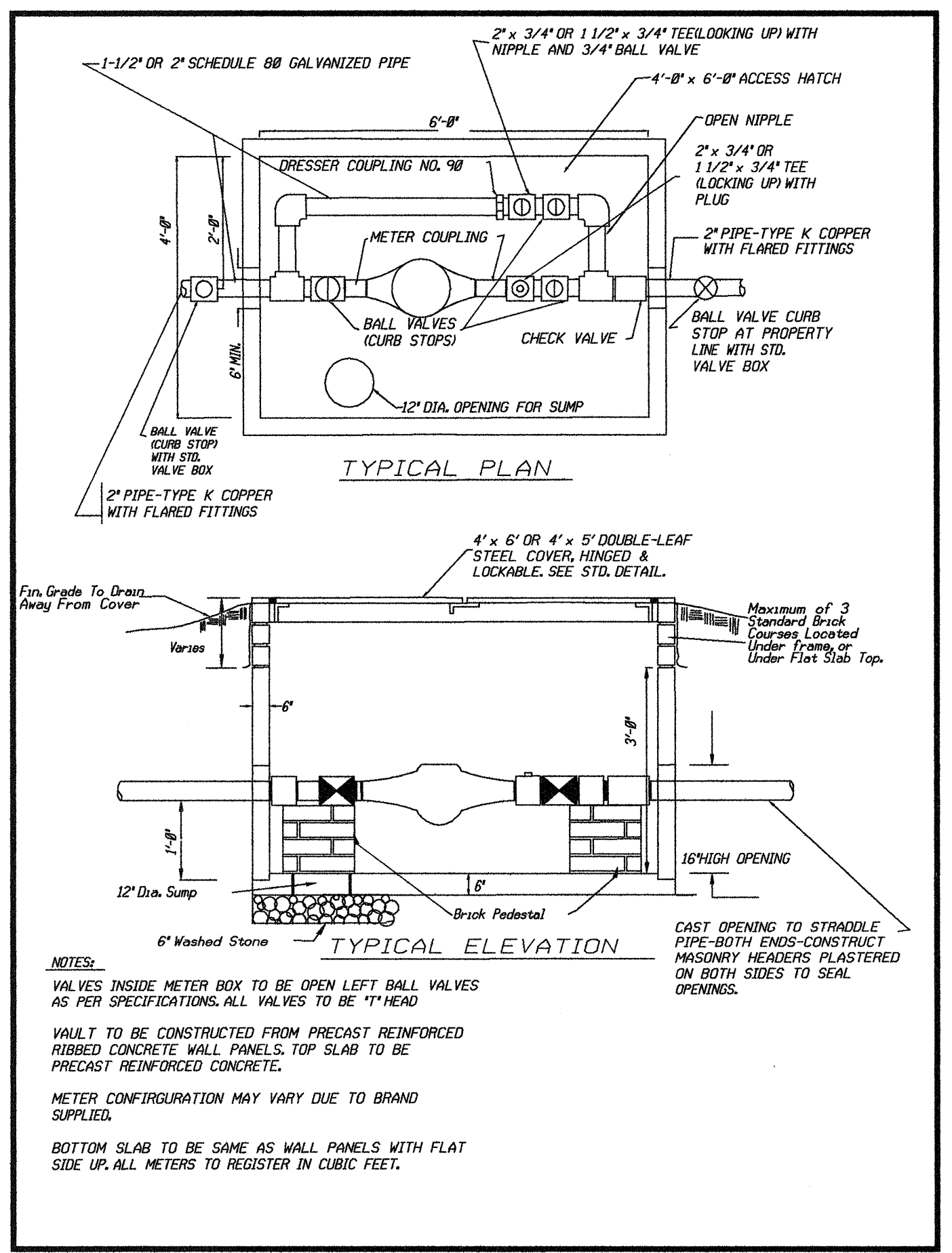


| NOMINAL PIPE SIZE (in) | TRENCH WIDTH (feet) | NOMINAL PIPE SIZE (in) | TRENCH WIDTH (feet) |
|------------------------|---------------------|------------------------|---------------------|
| 4 | 2.33 | 20 | 3.66 |
| 6 | 2.50 | 24 | 4.00 |
| 8 | 2.66 | 30 | 4.50 |
| 10 | 2.83 | 36 | 5.00 |
| 12 | 3.00 | 42 | 5.50 |
| 14 | 3.16 | 48 | 6.00 |
| 16 | 3.33 | 55 | 6.58 |
| 18 | 3.50 | | |

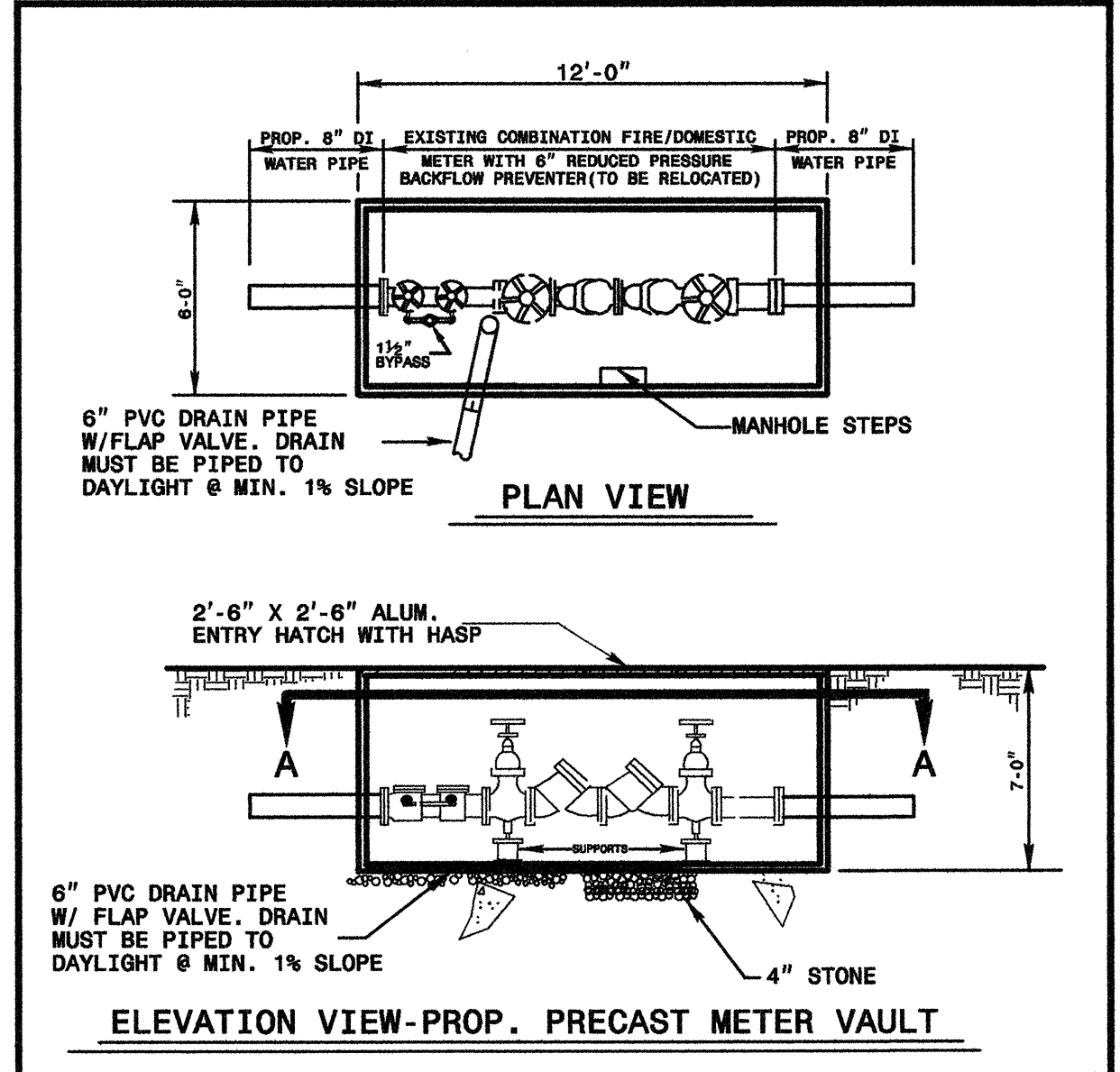


- NOTES:
- ALL CONCRETE AND ASPHALT PAVEMENT, INCLUDING DRIVEWAYS, TO BE CUT WITH A SAW.
 - WHERE CONCRETE PAVEMENT IS OVERLAID WITH ASPHALT 1/2" BINDER MAY BE SUBSTITUTED FOR CONCRETE, AS A BASE MATERIAL, WITH THE APPROVAL OF THE CONTROLLING AGENCY.
 - ALL PAVEMENT REPAIRS ARE SUBJECT TO APPROVAL BY NCDOT AS APPLICABLE.
 - 12-INCH MIN. MINIMUM CUT OUTSIDE TRENCH IS ALSO REQUIRED FOR SLOPED TRENCH WALLS.
 - SHORING REQUIRED IN ACCORDANCE WITH OSHA STANDARDS PART 1926, SUBPART F.
 - SEE DETAILED SPECIFICATIONS FOR TRENCH WIDTH.

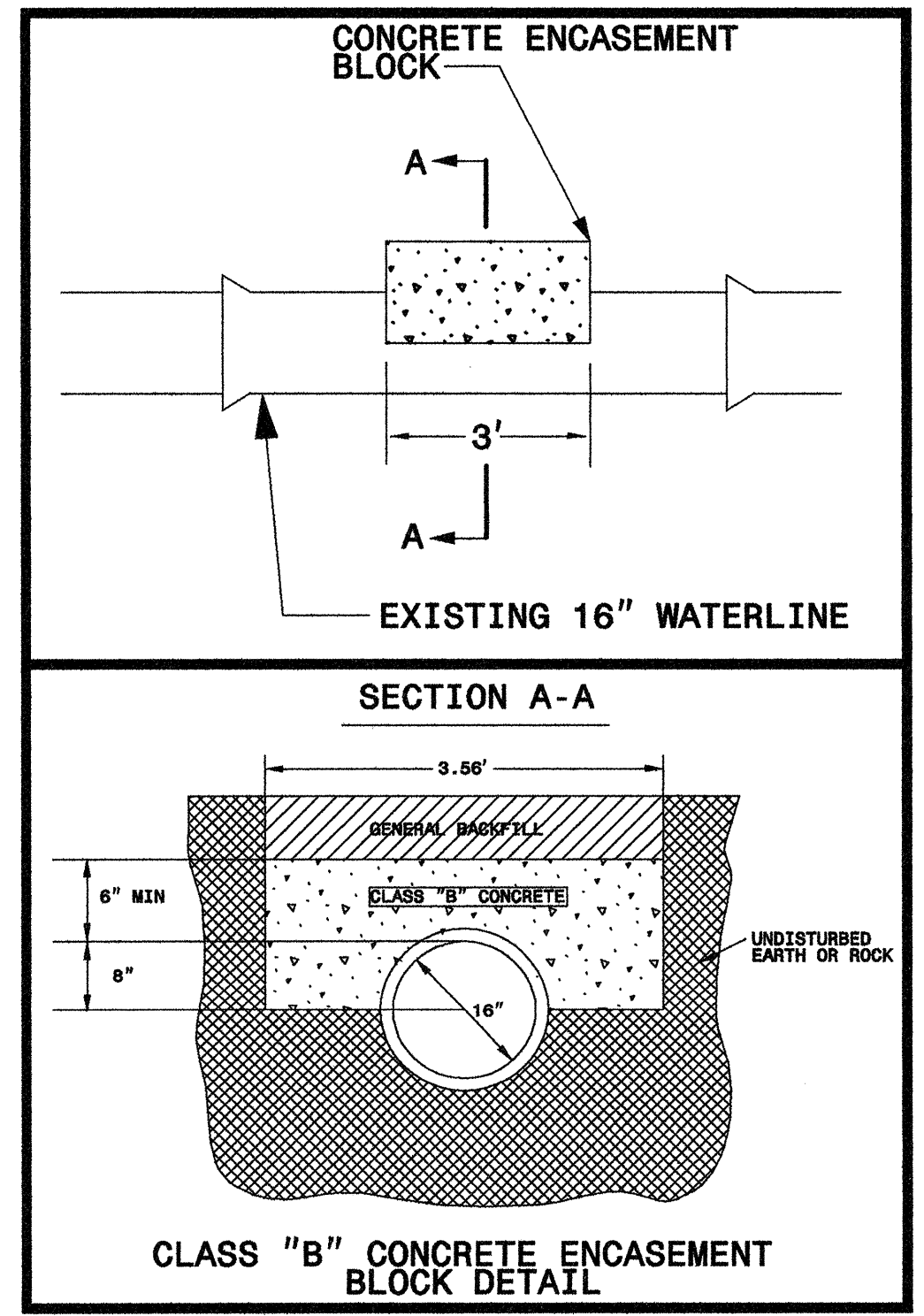
PAVEMENT REPAIR DETAIL
N.T.S.



4' x 6' METER VAULT, WITH 2" METER
NOT TO SCALE



6' x 12' METER VAULT, WITH 8" METER
NOT TO SCALE

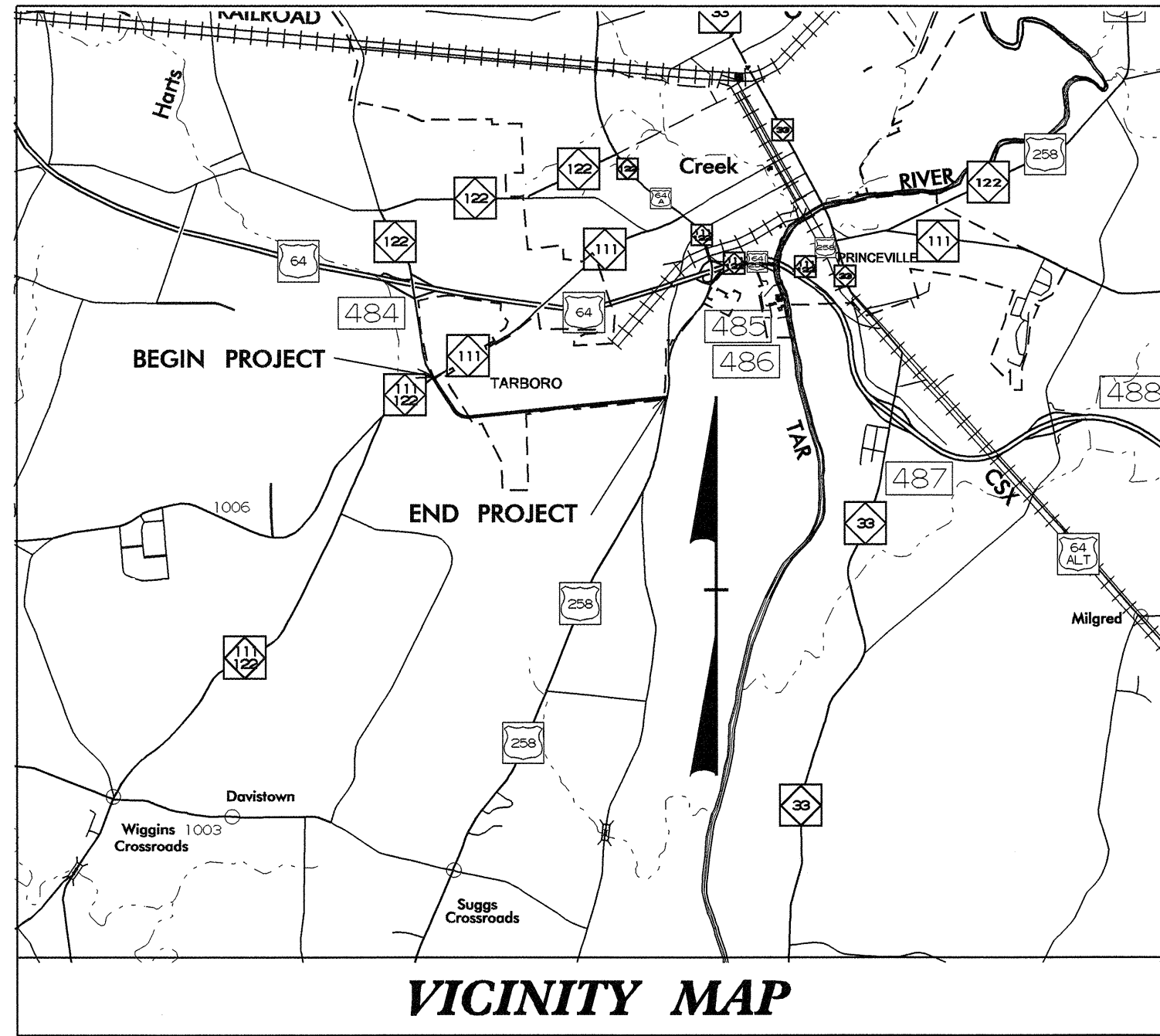


STATE OF NORTH CAROLINA
DIVISION OF HIGHWAYS

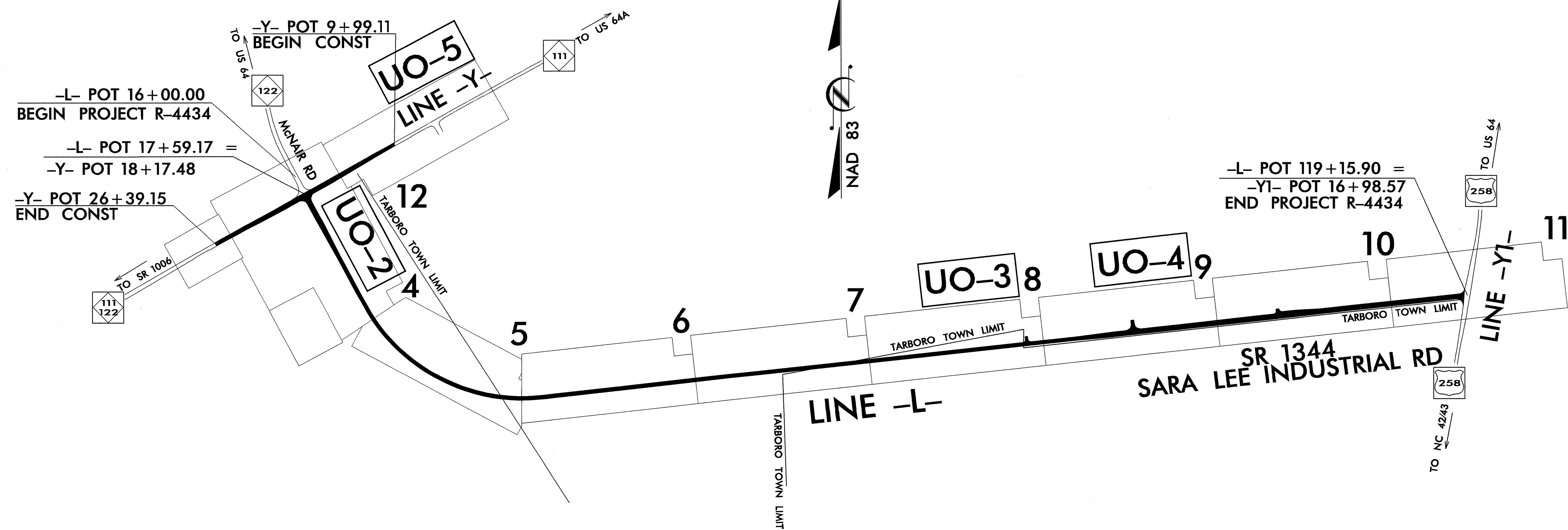
**UTILITY BY OTHERS PLANS
EDGEcombe COUNTY**

**LOCATION: McNAIR ROAD EXTENSION FROM
NC 111/22 TO US 258**

TYPE OF WORK: UTILITIES



VICINITY MAP



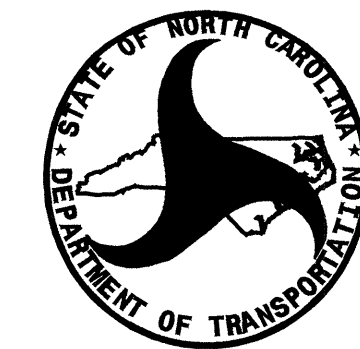
TIP R-4434

INDEX OF SHEETS

| SHEET NO. | DESCRIPTION |
|----------------|-------------------------------|
| UO-1 | TITLE SHEET |
| UO-2 THRU UO-5 | UTILITY BY OTHERS PLAN SHEETS |

UTILITY OWNERS ON PROJECT

- (1) TOWN OF TARBORO (POWER - DISTRIBUTION)
- (2) SPRINT TELEPHONE
- (3) PIEDMONT NATURAL GAS
- (4) ADELPHIA
- (5) EDGEcombe - MARTIN EMC (POWER - TRANSMISSION)
- (6) COX COMMUNICATIONS



PREPARED IN THE OFFICE OF:
**DIVISION OF HIGHWAYS
DESIGN SERVICES
UTILITY SECTION**

1591 MAIL SERVICES CENTER
RALEIGH NC 27699-1591
PHONE (919) 259-4128
FAX (919) 250-4119

Roger Worthington, P.E. UTILITIES SECTION ENGINEER

Steve Mckee, P.E. UTILITIES SQUAD LEADER PROJECT ENGINEER

Alonza Yancey UTILITIES PROJECT DESIGNER

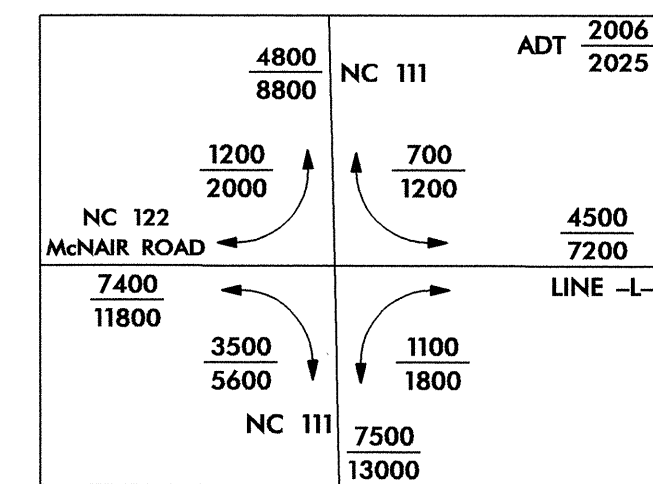
22-AUG-2006 09:14
s:\specdes\utilities\jrm\abv\utsgd4\projects\r-4434\r-4434_tsh_ddc4_uo1.dgn
\$\$\$\$\$USERNAME\$\$\$\$\$

DATUM DESCRIPTION

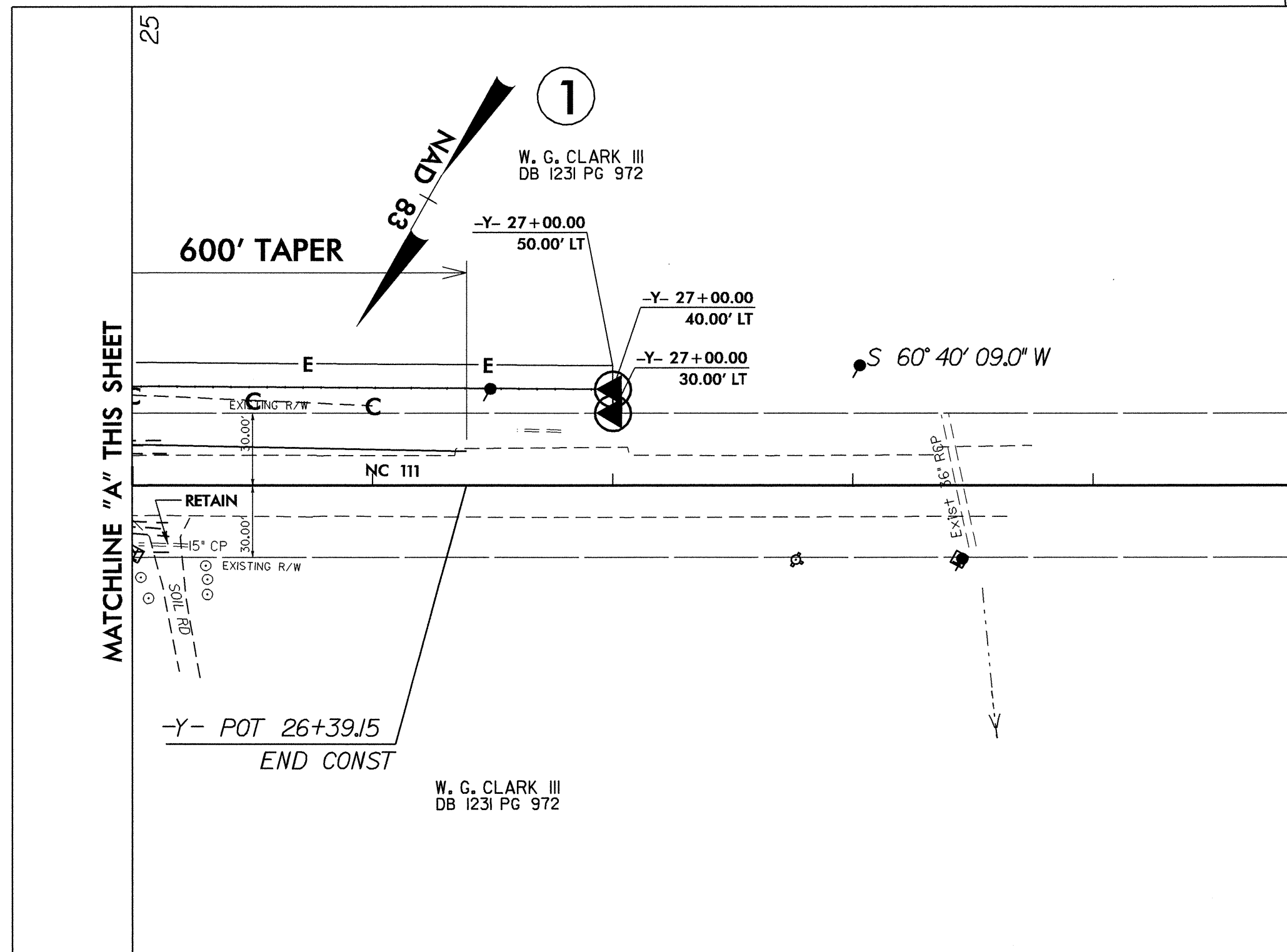
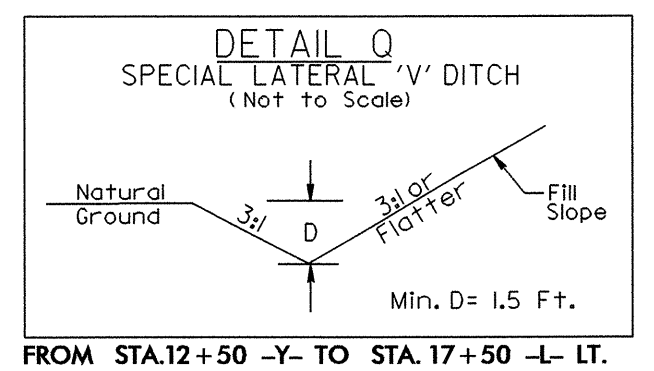
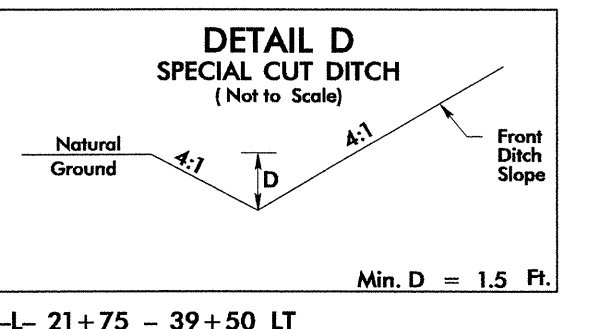
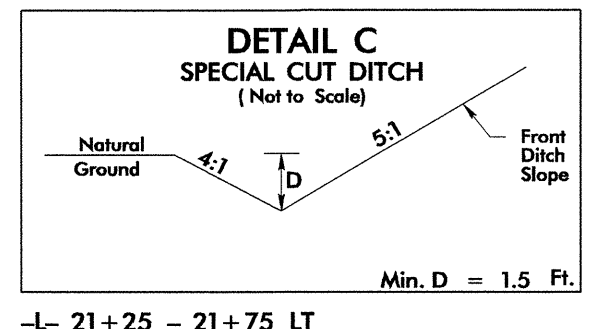
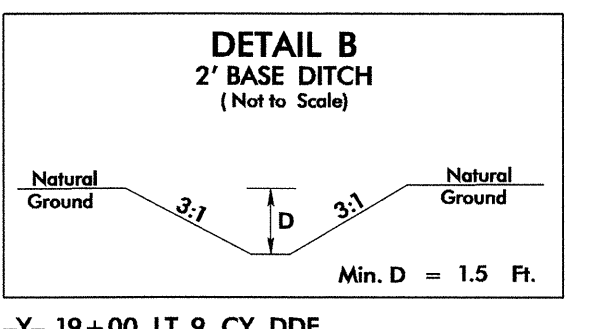
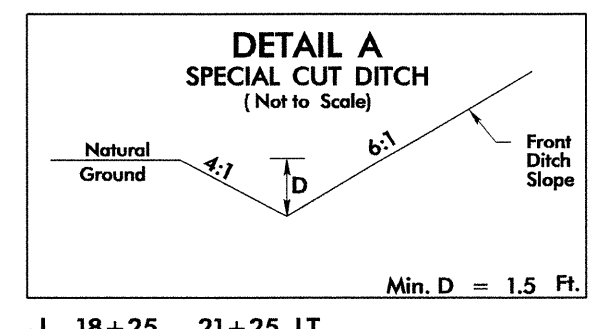
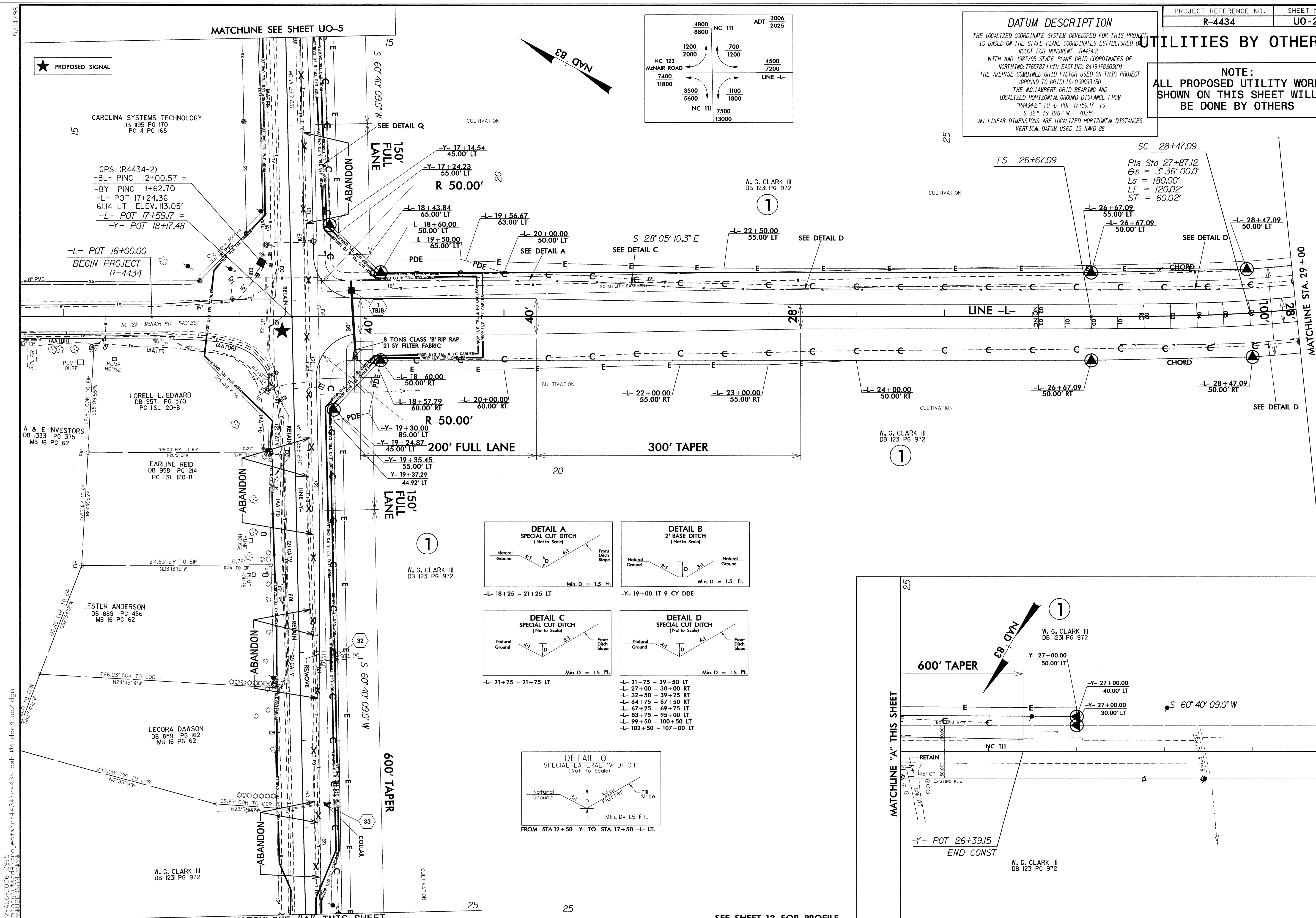
THE LOCALIZED COORDINATE SYSTEM DEVELOPED FOR THIS PROJECT IS BASED ON THE STATE PLANE COORDINATES ESTABLISHED BY NC 111 ADT 2006 2025. THE LOCALIZED COORDINATE SYSTEM DEVELOPED FOR THIS PROJECT IS BASED ON THE STATE PLANE COORDINATES ESTABLISHED BY NC 111 ADT 2006 2025. WITH NAD 1983/95 STATE PLANE GRID COORDINATES OF NORTHING: 776787.1110 EASTING: 2419178.603174 THE AVERAGE COMBINED GRID FACTOR USED ON THIS PROJECT (GROUND TO GRID) IS: 0.99993150. THE N.C. LAMBERT GRID BEARING AND LOCALIZED HORIZONTAL GROUND DISTANCE FROM "R-4434-2" TO "L- POT 17+59.17" IS S 32° 15' 19.6" W 70.35'. ALL LINEAR DIMENSIONS ARE LOCALIZED HORIZONTAL DISTANCES. VERTICAL DATUM USED IS NAD 88.

UTILITIES BY OTHERS

NOTE:
ALL PROPOSED UTILITY WORK SHOWN ON THIS SHEET WILL BE DONE BY OTHERS



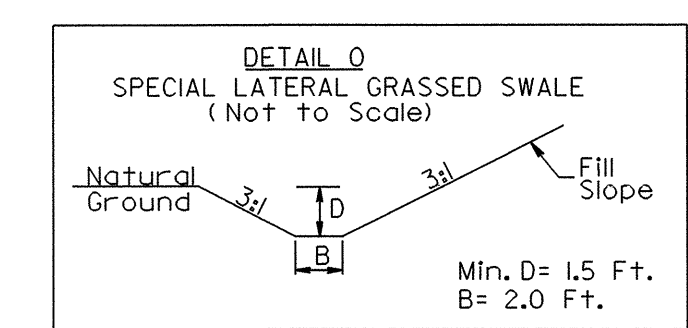
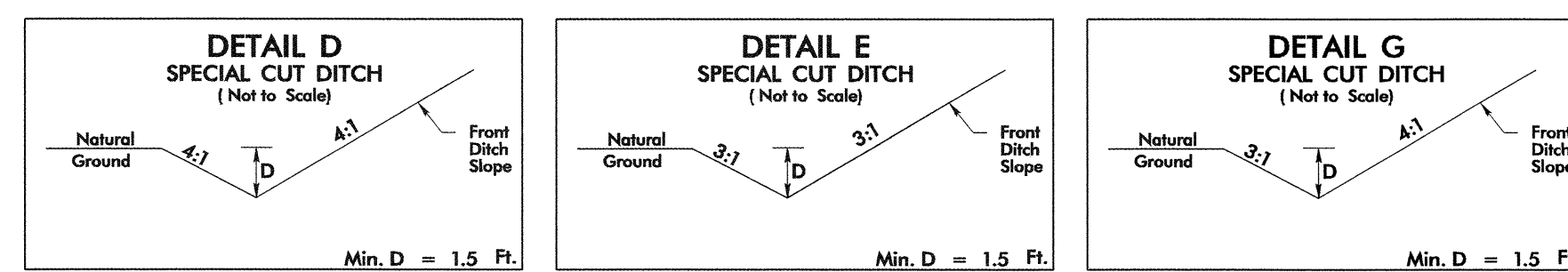
★ PROPOSED SIGNAL



22-AUG-2006 09:45
ps214556 8/22/2006 r4434_psh_04_ddc4_uo2.dgn
PS214556 8/22/2006 r4434_psh_04_ddc4_uo2.dgn

UTILITIES BY OTHERS

NOTE:
ALL PROPOSED UTILITY WORK
SHOWN ON THIS SHEET WILL
BE DONE BY OTHERS

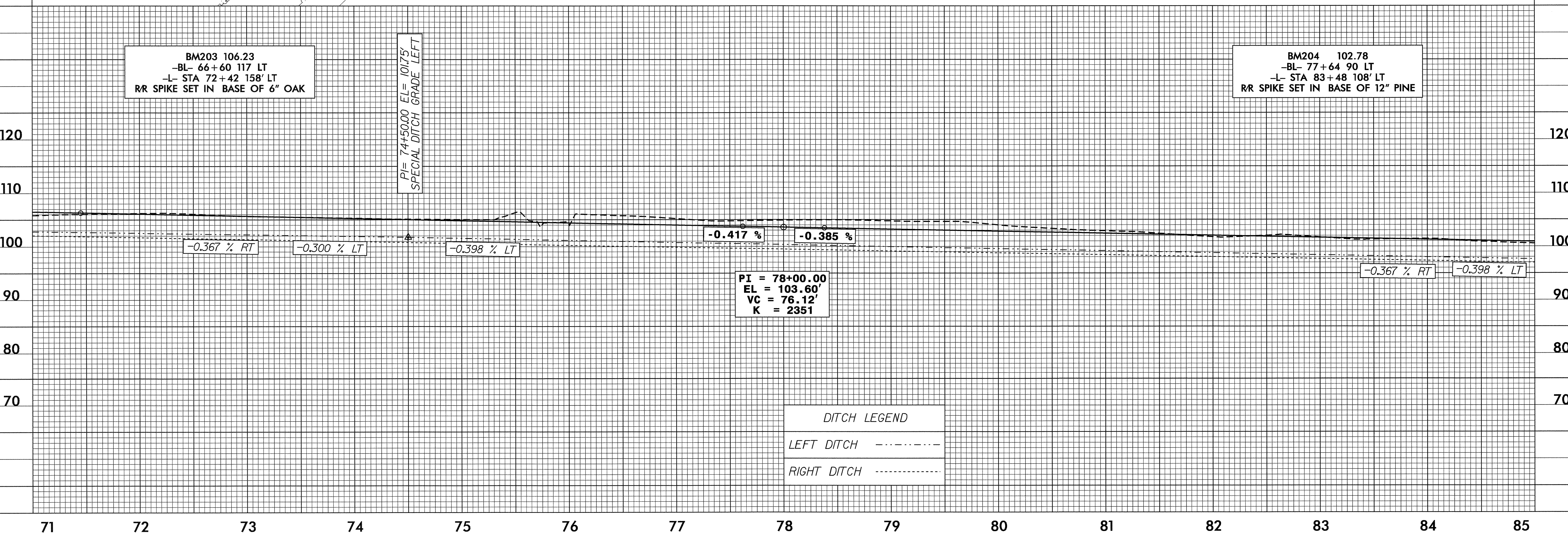
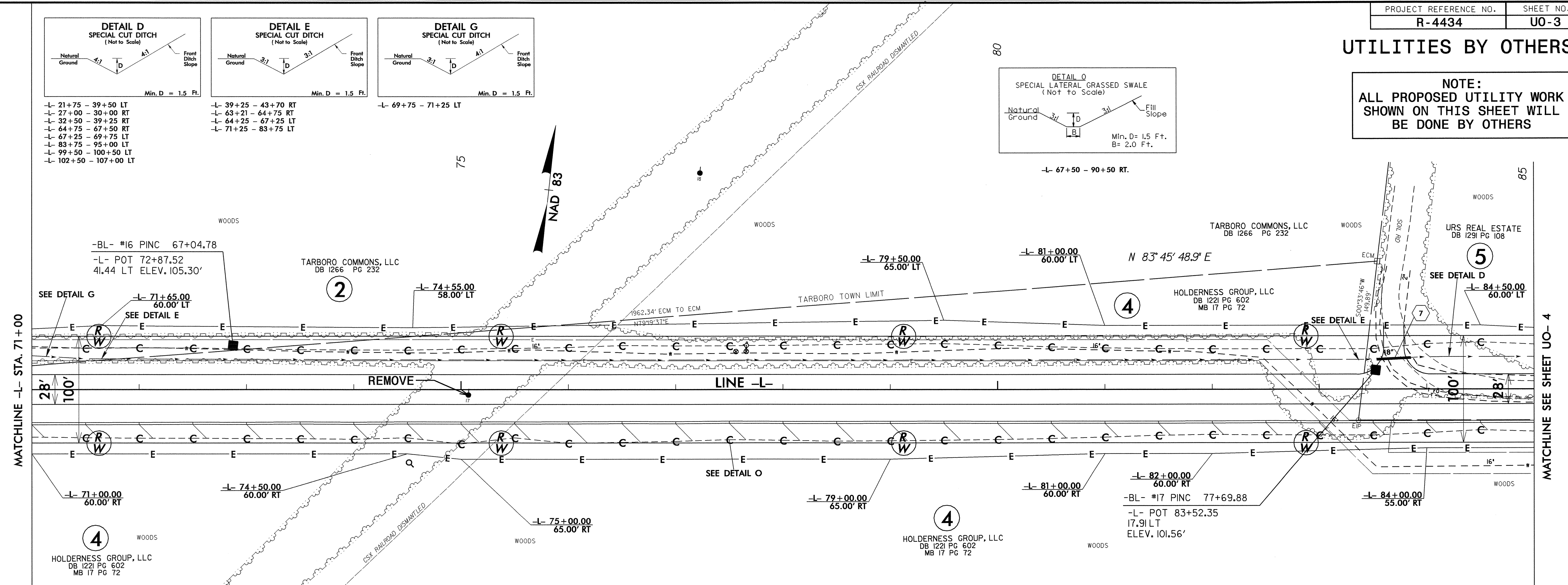


Min. D = 1.5 Ft.
 -L- 21+75 - 39+50 LT
 -L- 27+00 - 30+00 RT
 -L- 32+50 - 39+25 RT
 -L- 64+75 - 67+50 RT
 -L- 67+25 - 69+75 LT
 -L- 83+75 - 95+00 LT
 -L- 99+50 - 100+50 LT
 -L- 102+50 - 107+00 LT

Min. D = 1.5 Ft.
 -L- 39+25 - 43+70 RT
 -L- 43+21 - 64+75 RT
 -L- 64+25 - 67+25 LT
 -L- 71+25 - 83+75 LT

Min. D = 1.5 Ft.
 -L- 69+75 - 71+25 LT

-L- 67+50 - 90+50 RT.



BM203 106.23
 -BL- 66+60 117 LT
 -L- STA 72+42 158' LT
 R/R SPIKE SET IN BASE OF 6" OAK

PI = 74+50.00 EL = 101.75'
 SPECIAL DITCH GRADE LEFT

BM204 102.78
 -BL- 77+64 90 LT
 -L- STA 83+48 108' LT
 R/R SPIKE SET IN BASE OF 12" PINE

PI = 78+00.00
 EL = 103.60'
 VC = 76.12'
 K = 2351

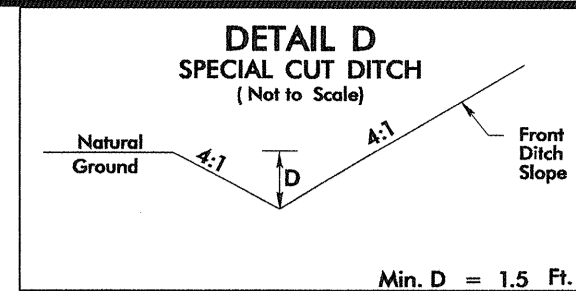
DITCH LEGEND

| | |
|-------------|-------|
| LEFT DITCH | ----- |
| RIGHT DITCH | ----- |

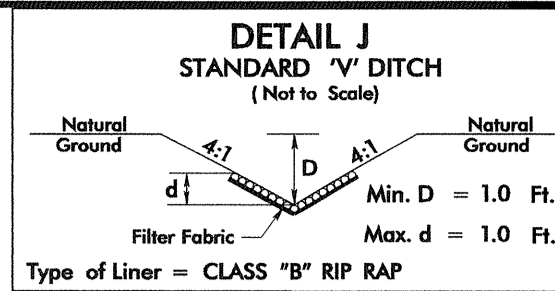
8/11/99
 22240620066.09886
 ites:\projects\2006\2006_r4434_psh_08_dcc4_uo3.dgn

UTILITIES BY OTHERS

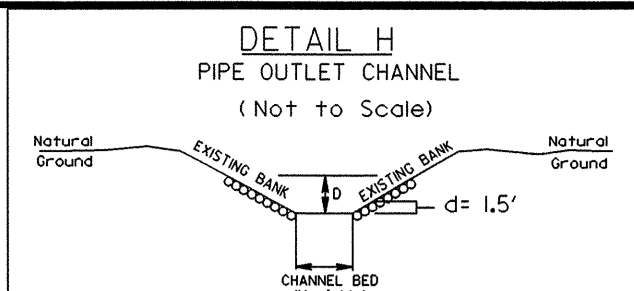
NOTE:
ALL PROPOSED UTILITY WORK
SHOWN ON THIS SHEET WILL
BE DONE BY OTHERS



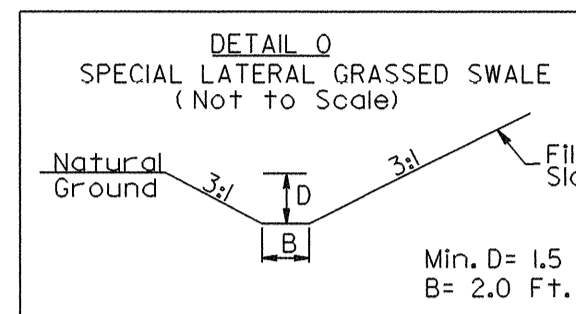
-L- 21+75 - 39+50 LT
-L- 27+00 - 30+00 RT
-L- 32+50 - 39+25 RT
-L- 44+75 - 47+50 RT
-L- 47+25 - 69+75 LT
-L- 83+75 - 95+00 LT
-L- 99+50 - 100+50 LT
-L- 102+50 - 107+00 LT



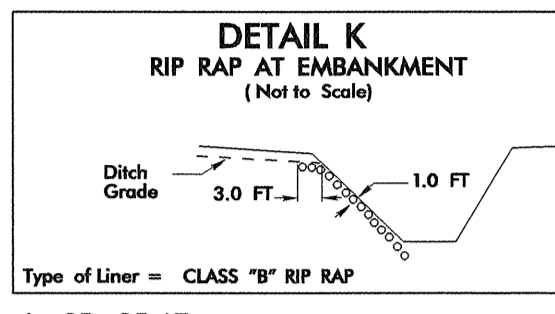
-L- 95+00 - 95+25 LT
13 CY DDE
8.3 TONS CLASS "B" RIP RAP
16.6 SY FILTER FABRIC



Length = 10.0 Ft.
D = 4.0 Ft.
Est. = 3 Tons of Class B Rip-Rap
-L- 98+50

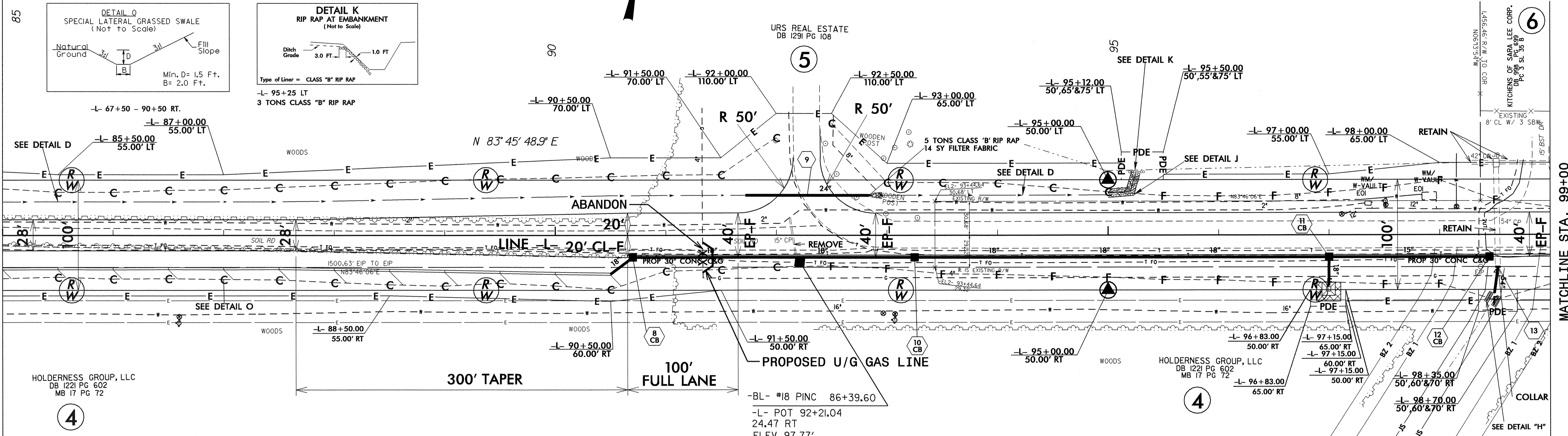


-L- 67+50 - 90+50 RT.
-L- 87+00.00 55.00' LT



-L- 95+25 LT
3 TONS CLASS "B" RIP RAP

MATCHLINE SEE SHEET U0-3



HOLDERNESS GROUP, LLC
DB I221 PG 602
MB I7 PG 72

300' TAPER

100' FULL LANE

PROPOSED U/G GAS LINE

-BL- #18 PINC 86+39.60
-L- POT 92+21.04
24.47 RT
ELEV. 97.77'

HOLDERNESS GROUP, LLC
DB I221 PG 602
MB I7 PG 72

120

110

100

90

80

70

-0.398 % LT -0.367 % RT

-0.398 % LT

PI = 90+50.00 EL = 94.9'
SPECIAL DITCH GRADE RIGHT
END GRADE

PI = 95+00.00 EL = 93.60'
SPECIAL DITCH GRADE LEFT
END GRADE

| DITCH LEGEND | |
|--------------|-------|
| LEFT DITCH | ----- |
| RIGHT DITCH | ----- |

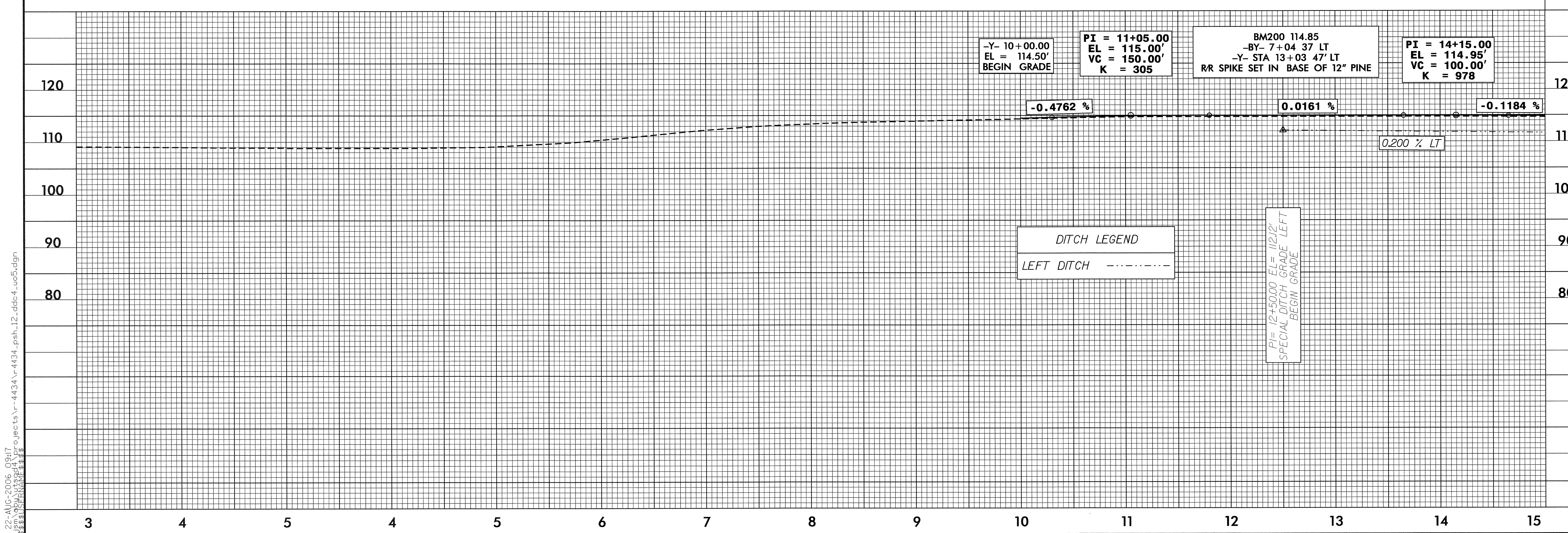
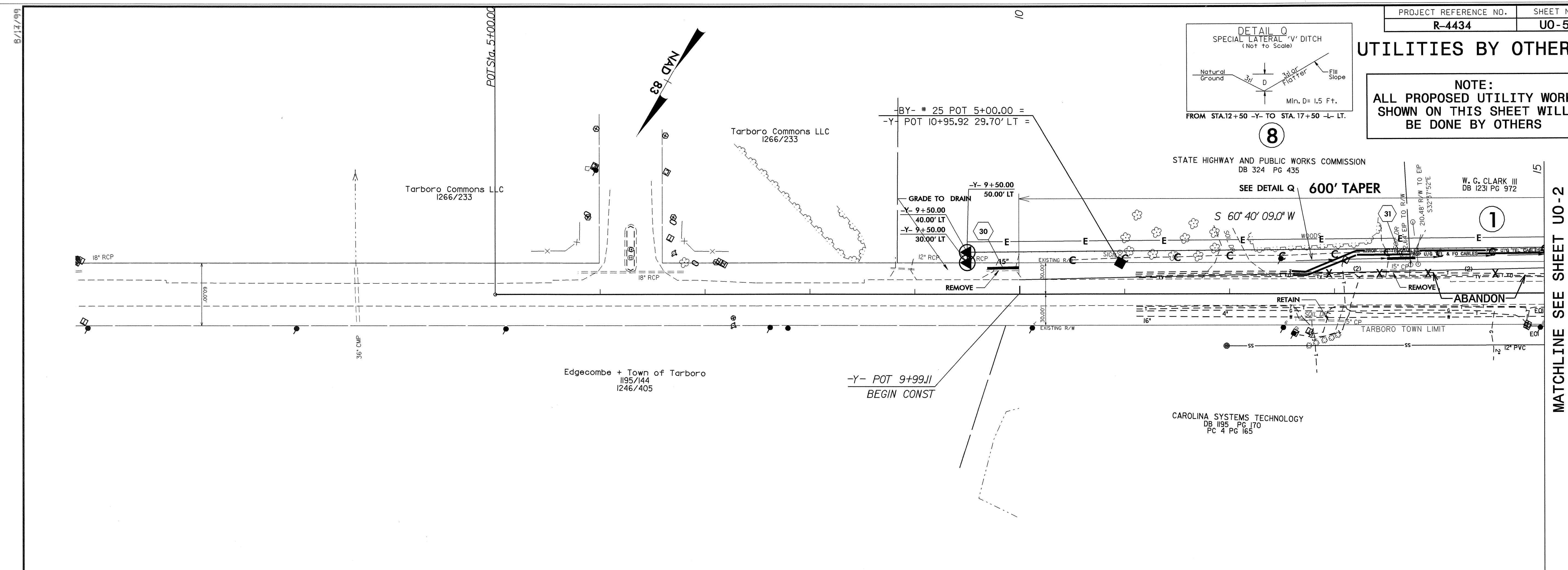
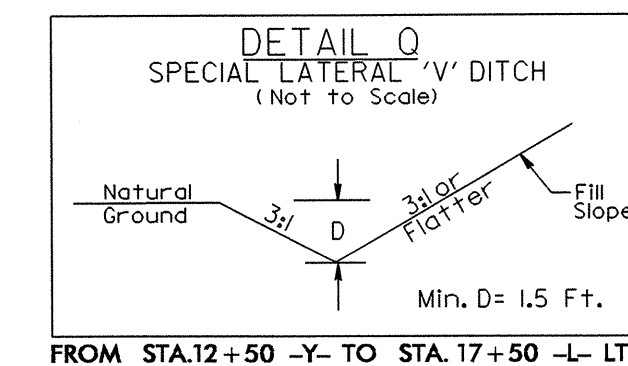
85 86 87 88 89 90 91 92 93 94 95 96 97 98 99

MARCH 08, 2006 PDE DELETED AND REVISED TCE ON PARCEL 4
APRIL 10, 2006 PDE ADDED AND REVISED TCE ON PARCEL 4

Z:\AUG-2006\03416\PS214556\psh_09_ddc4_uo4.dgn

UTILITIES BY OTHERS

NOTE:
ALL PROPOSED UTILITY WORK
SHOWN ON THIS SHEET WILL
BE DONE BY OTHERS



DITCH LEGEND
LEFT DITCH - - - - -

PI = 12+50.00 EL = 112.12'
SPECIAL DITCH GRADE LEFT
BEGIN GRADE

22-AUG-2006 09:17
 s:\m\p\4\4\4\projects\4434\sh_12_ddc4_uc5.dgn
 8/13/99
 POT Sta. 5+100.00
 MATCHLINE SEE SHEET U0-2