

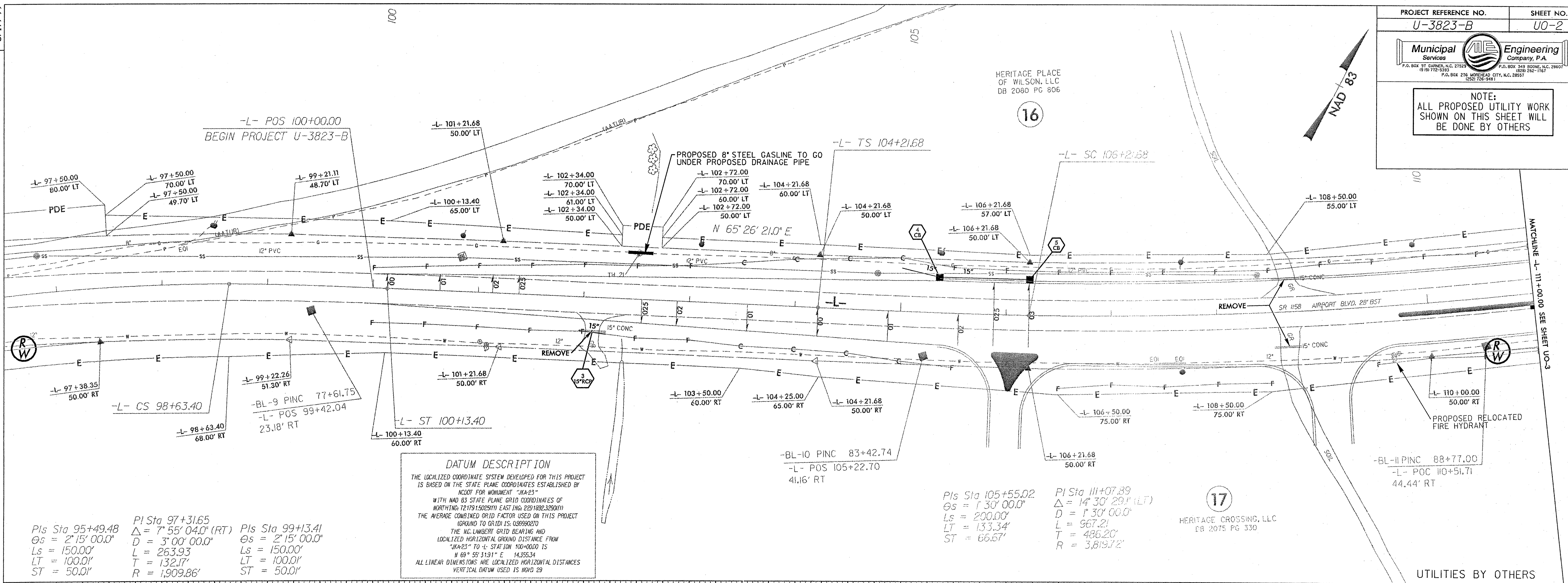
8/17/99

REVISIONS

SYSTEMS  
CIVIL  
ENGINEERING



NOTE:  
ALL PROPOSED UTILITY WORK  
SHOWN ON THIS SHEET WILL  
BE DONE BY OTHERS



Pls Sta 95+49.48	PI Sta 97+31.65	Pls Sta 99+13.41
$\Delta = 2^{\circ}15'00.0''$	$\Delta = 7^{\circ}55'04.0''$ (RT)	$\Delta = 2^{\circ}15'00.0''$
Ls = 150.00'	L = 263.93'	Ls = 150.00'
LT = 100.00'	T = 132.17'	LT = 100.00'
ST = 50.00'	R = 1,909.86'	ST = 50.00'

**DATUM DESCRIPTION**

THE LOCALIZED COORDINATE SYSTEM DEVELOPED FOR THIS PROJECT IS BASED ON THE STATE PLANE COORDINATES ESTABLISHED BY NCOT FOR MONUMENT "8A-23" WITH NAD 83 STATE PLANE GRID COORDINATES OF NORTING: 1217915025(11) EASTING: 2291822325(11) THE AVERAGE COMBINED GRID FACTOR USED ON THIS PROJECT (GROUND TO GRID) IS: 0.99992070

THE N. C. Lambert GRID BEARING AND LOCALIZED HORIZONTAL GROUND DISTANCE FROM "8A-23" TO 4+ STATION 100+00.00 IS N 69° 55' 31.91" E 14,355.34'

ALL LINEAR DIMENSIONS ARE LOCALIZED HORIZONTAL DISTANCES VERTICAL DATUM USED IS NAVD 29

Pls Sta 105+55.02	PI Sta 111+07.89
$\Delta = 1^{\circ}30'00.0''$	$\Delta = 14^{\circ}30'29.1''$ (LT)
Ls = 200.00'	D = 1^{\circ}30'00.0''
LT = 133.34'	L = 967.21'
ST = 66.67'	T = 486.20'
	R = 3,819.72'

160	160
150	150
140	140
130	130
120	120
110	110
100	100