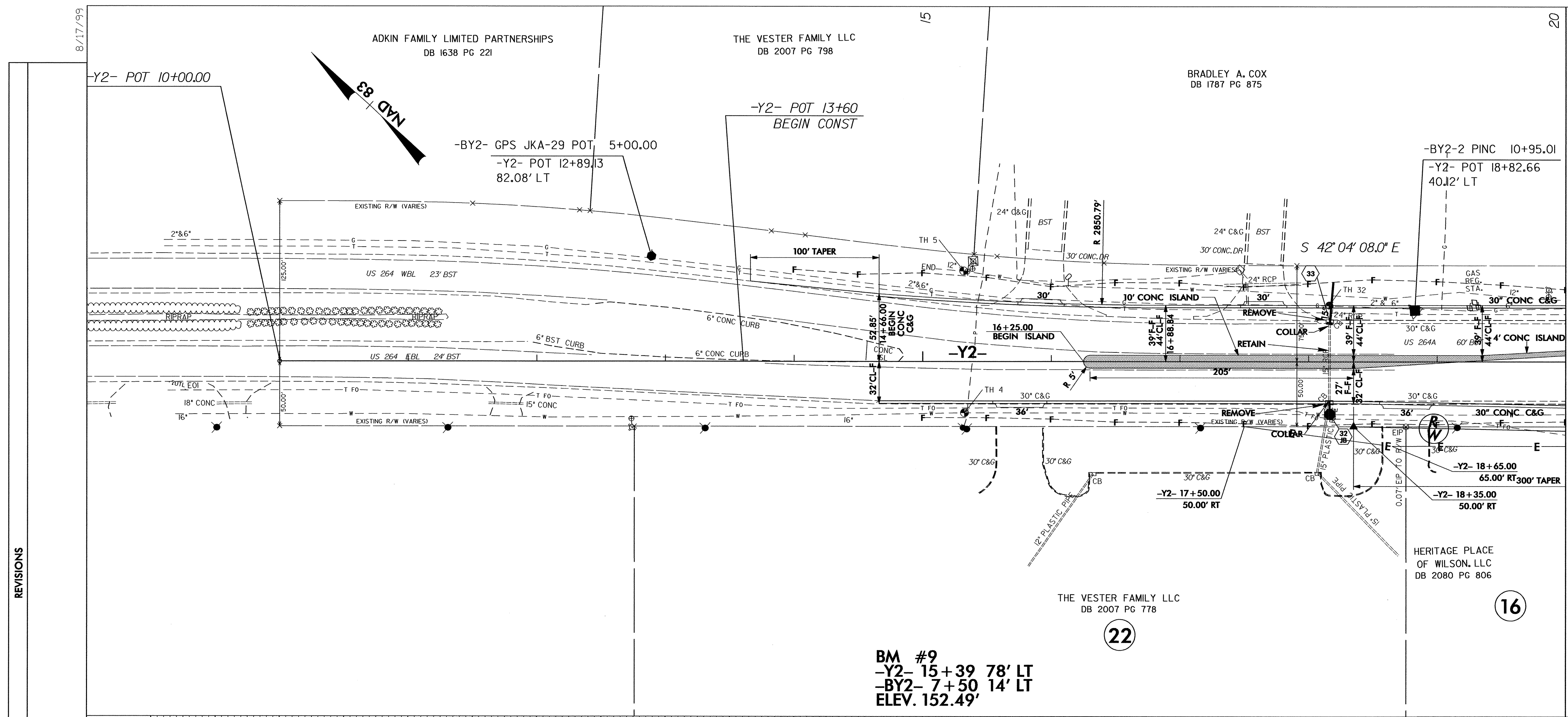


PROJECT REFERENCE NO. U-3823-B	SHEET NO. 7
R/W SHEET NO. 13	
ROADWAY DESIGN ENGINEER SEAL 18537 FERRY P. PAGE	HYDRAULICS ENGINEER SEAL 16600 RANDALL C. HENNEBERG



BM #9
-Y2- 15+39 78' LT
-BY2- 7+50 14' LT
ELEV. 152.49'

-Y2- 14+66.00
EL = 151.71
BEGIN GRADE

PI = 18+44.39
EL = 152.85'
VC = 150.00'
K = 250

(+)0.3002% (-)0.3000%

REVISIONS

8/17/99

11-OCT-2005 10:23
\\s3823new\3823b-ph_07.dcf 4.dgn

