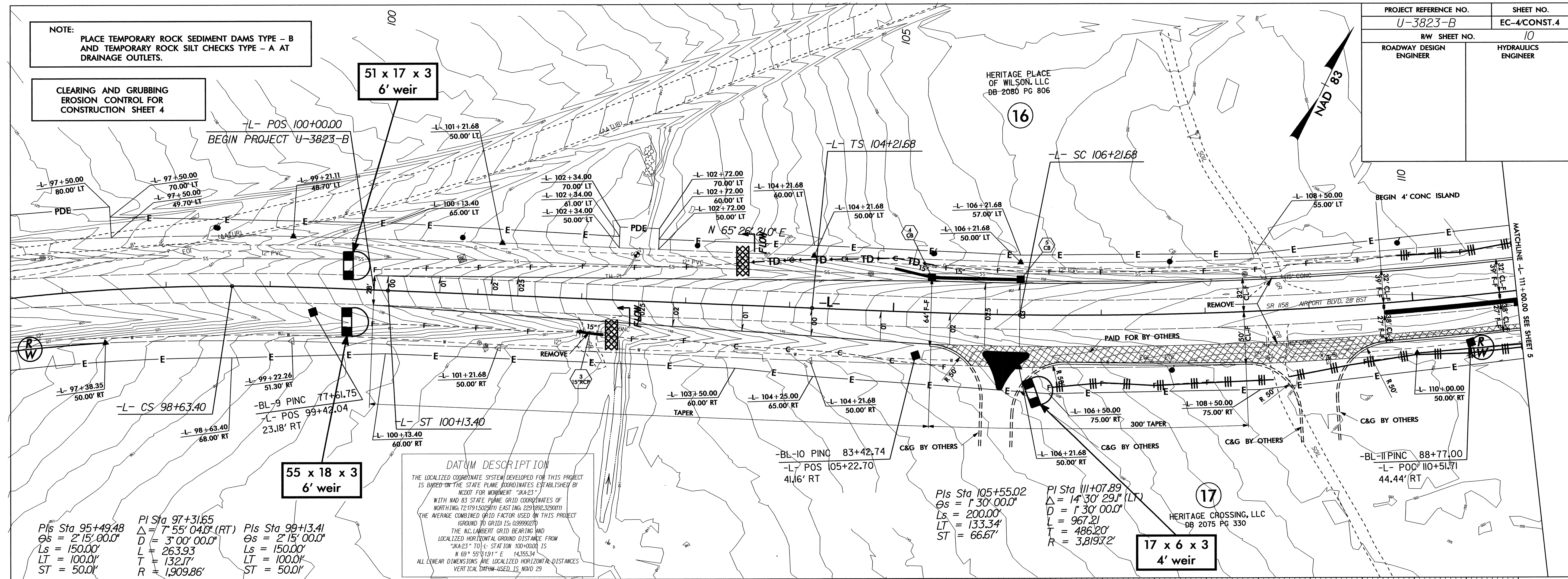


PROJECT REFERENCE NO. U-3823-B	SHEET NO. EC-4/CONST.4
R/W SHEET NO. 10	
ROADWAY DESIGN ENGINEER	HYDRAULICS ENGINEER

NOTE:
PLACE TEMPORARY ROCK SEDIMENT DAMS TYPE - B
AND TEMPORARY ROCK SILT CHECKS TYPE - A AT
DRAINAGE OUTLETS.

CLEARING AND GRUBBING
EROSION CONTROL FOR
CONSTRUCTION SHEET 4

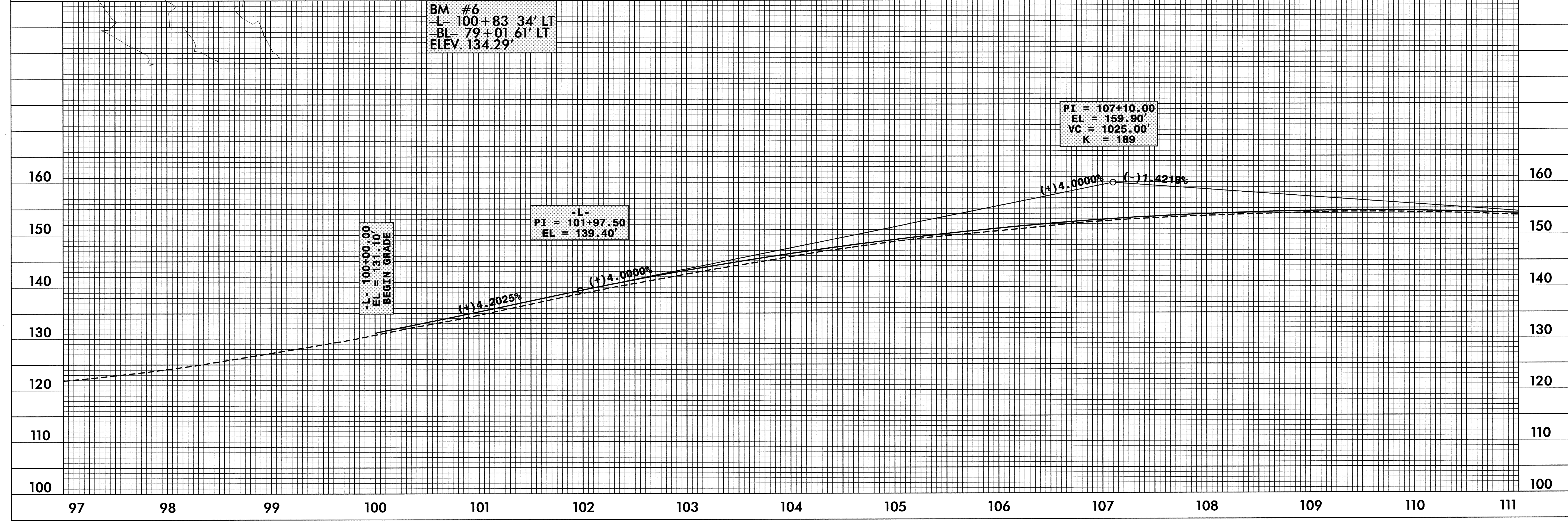


PIs Sta 95+49.48
 $\Delta s = 2'15".00"$
 $Ls = 150.00'$
 $LT = 100.00'$
 $ST = 50.00'$

PI Sta 97+31.65
 $\Delta = 7'55".04"$ (RT)
 $D = 3'00".00"$
 $L = 263.93'$
 $T = 132.17'$
 $R = 1,909.86'$

PIs Sta 99+13.41
 $\Delta s = 2'15".00"$
 $Ls = 150.00'$
 $LT = 100.00'$
 $ST = 50.00'$

DATUM DESCRIPTION
 THE LOCALIZED COORDINATE SYSTEM DEVELOPED FOR THIS PROJECT
 IS BASED ON THE STATE PLANE COORDINATES ESTABLISHED BY
 NCOOT FOR MONUMENT "JKA-23"
 WITH NAD 83 STATE PLANE GRID COORDINATES OF
 NORTHING: 72,179,150.29111 EASTING: 229,180,328.00111
 THE AVERAGE COMBINED GRID FACTOR USED ON THIS PROJECT
 (GROUND TO GRID IS: 0.00099027)
 THE NAD 83 GRID BEARING AND
 LOCALIZED HORIZONTAL GROUND DISTANCE FROM
 "JKA-23" TO L- STATION 100+00.00 IS
 $N 69^{\circ} 55' 19.11" E 14,355.34'$
 ALL LINEAR DIMENSIONS ARE LOCALIZED HORIZONTAL DISTANCES
 VERTICAL DATUM USED: NAVD 83



BM #6
 -L- 100+83 34' LT
 -BL- 79+01 61' LT
 ELEV. 134.29'