

WOLFTRAP HOLDINGS, LLC
AND STOCOR DEVELOPMENT, LLC

(20A)

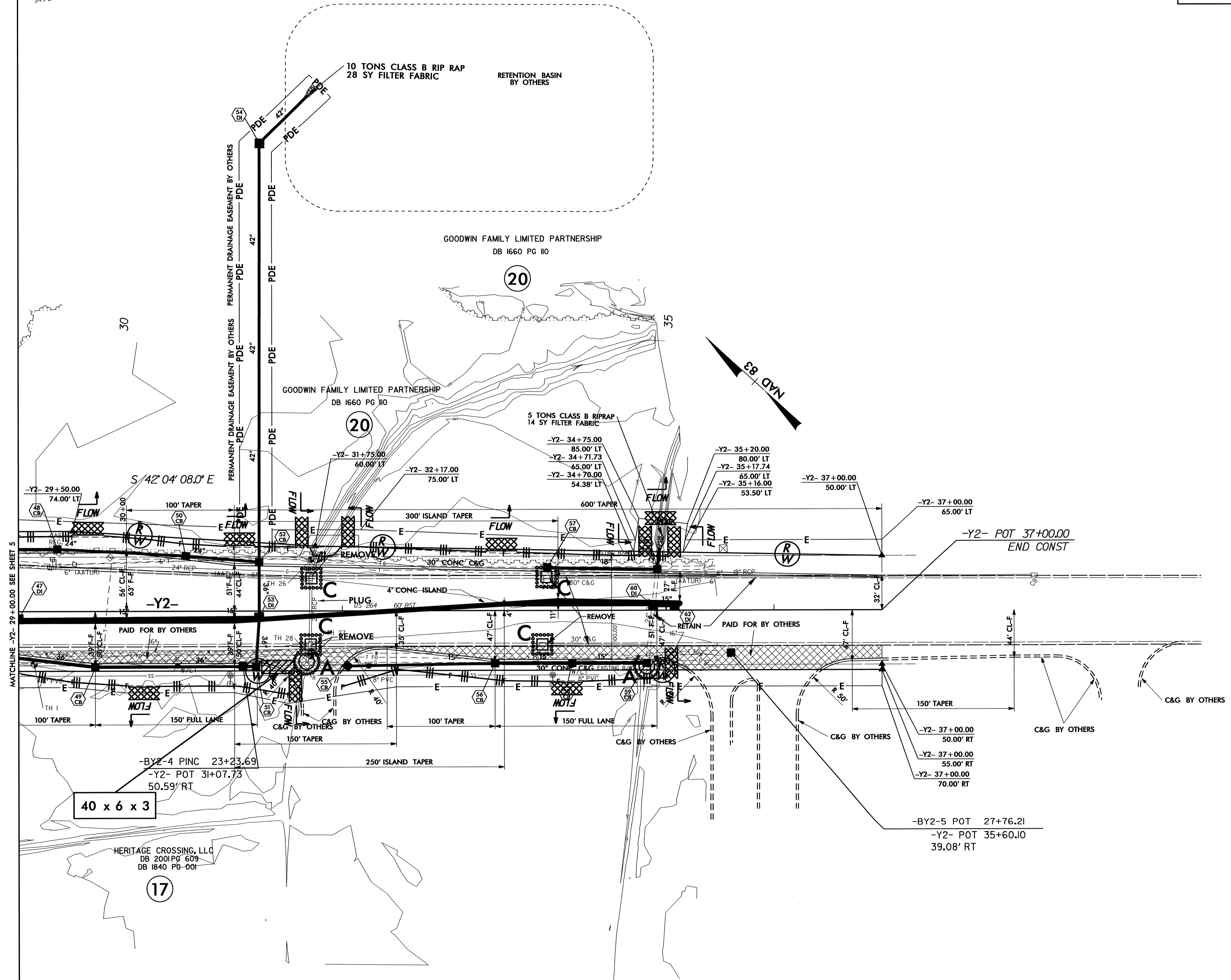
364.92'
S42°03'54"E

507.60'
S49°27'35"E

NOTE:
PLACE TEMPORARY ROCK SEDIMENT DAMS TYPE - B
AND TEMPORARY ROCK SILT CHECKS TYPE - A AT
DRAINAGE OUTLETS.

CLEARING AND GRUBBING
EROSION CONTROL FOR
CONSTRUCTION SHEET 8

PROJECT REFERENCE NO. U-3823-B	SHEET NO. EC-8/CONST.8
R/W SHEET NO. 14	
ROADWAY DESIGN ENGINEER	HYDRAULICS ENGINEER



MATCHLINE -Y2- 29+00.00 SEE SHEET 5

-Y2- POT 37+00.00
END CONST

-BY2-4 PINC 23+23.69
-Y2- POT 31+07.73
50.59' RT

-BY2-5 POT 27+76.21
-Y2- POT 35+60.10
39.08' RT

(17)