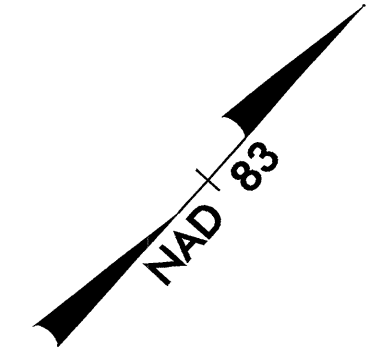
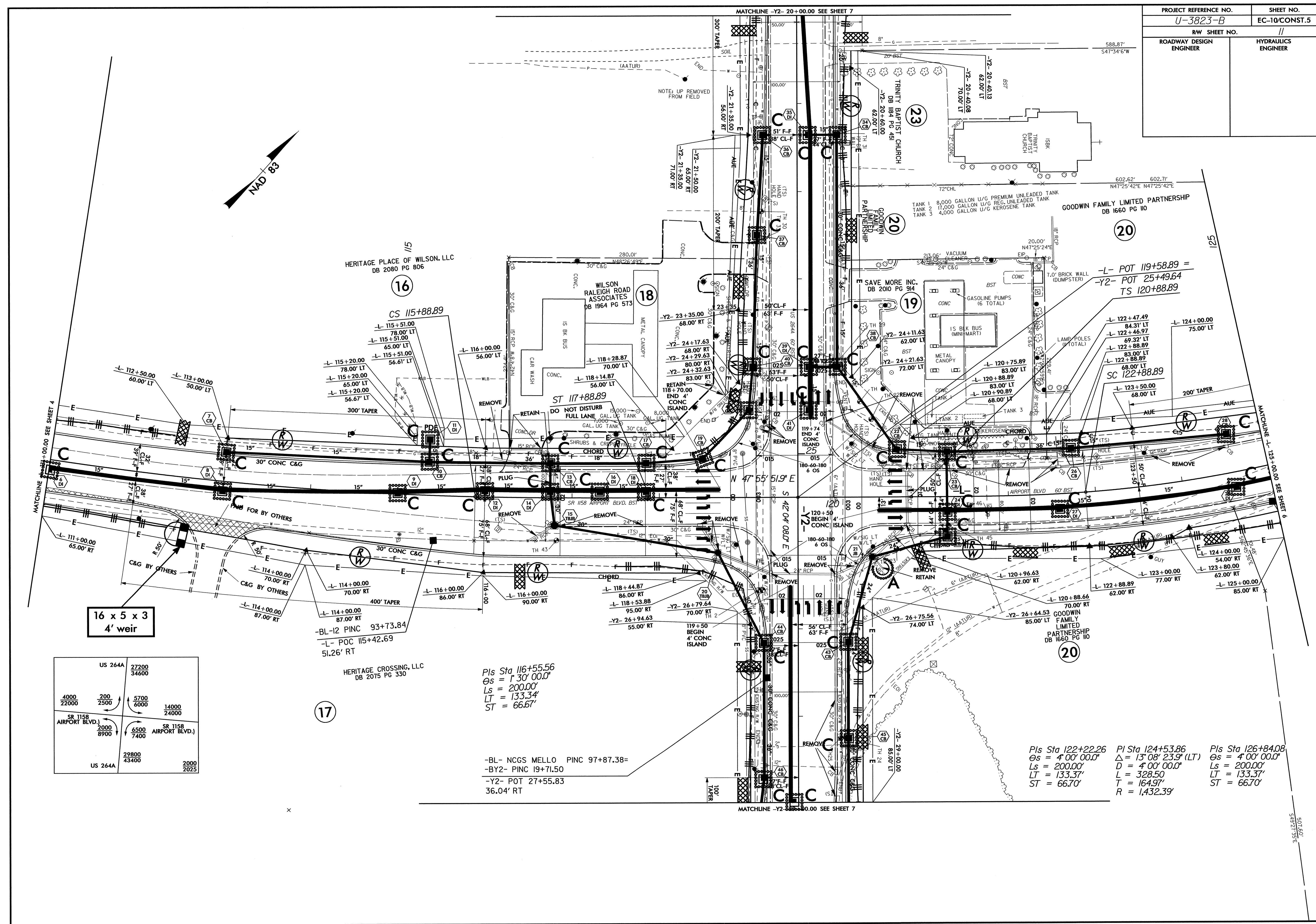


PROJECT REFERENCE NO.	SHEET NO.
U-3823-B	EC-10/CONST.5
R/W SHEET NO.	11
ROADWAY DESIGN ENGINEER	HYDRAULICS ENGINEER



16 x 5 x 3  
4' weir

US 264A	27200	34600
4000	22000	2500
5700	6000	14000
2000	2500	8900
SR 1158 AIRPORT BLVD.)	6500	7400
SR 1158 AIRPORT BLVD.)	29800	43400
US 264A	2000	2025

17

Pls Sta 116+55.56  
 $\Theta_s = 130^\circ 00.0'$   
 $L_s = 200.00'$   
 $LT = 133.34'$   
 $ST = 66.67'$

-BL- NCGS MELLO PINC 97+87.38=  
 -BY2- PINC 19+71.50  
 -Y2- POT 27+55.83  
 36.04' RT

Pls Sta 122+22.26  
 $\Theta_s = 4^\circ 00' 00.0''$   
 $L_s = 200.00'$   
 $LT = 133.37'$   
 $ST = 66.70'$

Pl Sta 124+53.86  
 $\Theta_s = 13^\circ 08' 23.9''$  (LT)  
 $D = 4^\circ 00' 00.0''$   
 $L = 328.50'$   
 $T = 164.97'$   
 $R = 1,432.39'$

Pls Sta 126+84.08  
 $\Theta_s = 4^\circ 00' 00.0''$   
 $L_s = 200.00'$   
 $LT = 133.37'$   
 $ST = 66.70'$

MATCHLINE -Y2- 20+00.00 SEE SHEET 7

MATCHLINE -Y2- 20+00.00 SEE SHEET 7

501.50'  
549.21'±5.5'