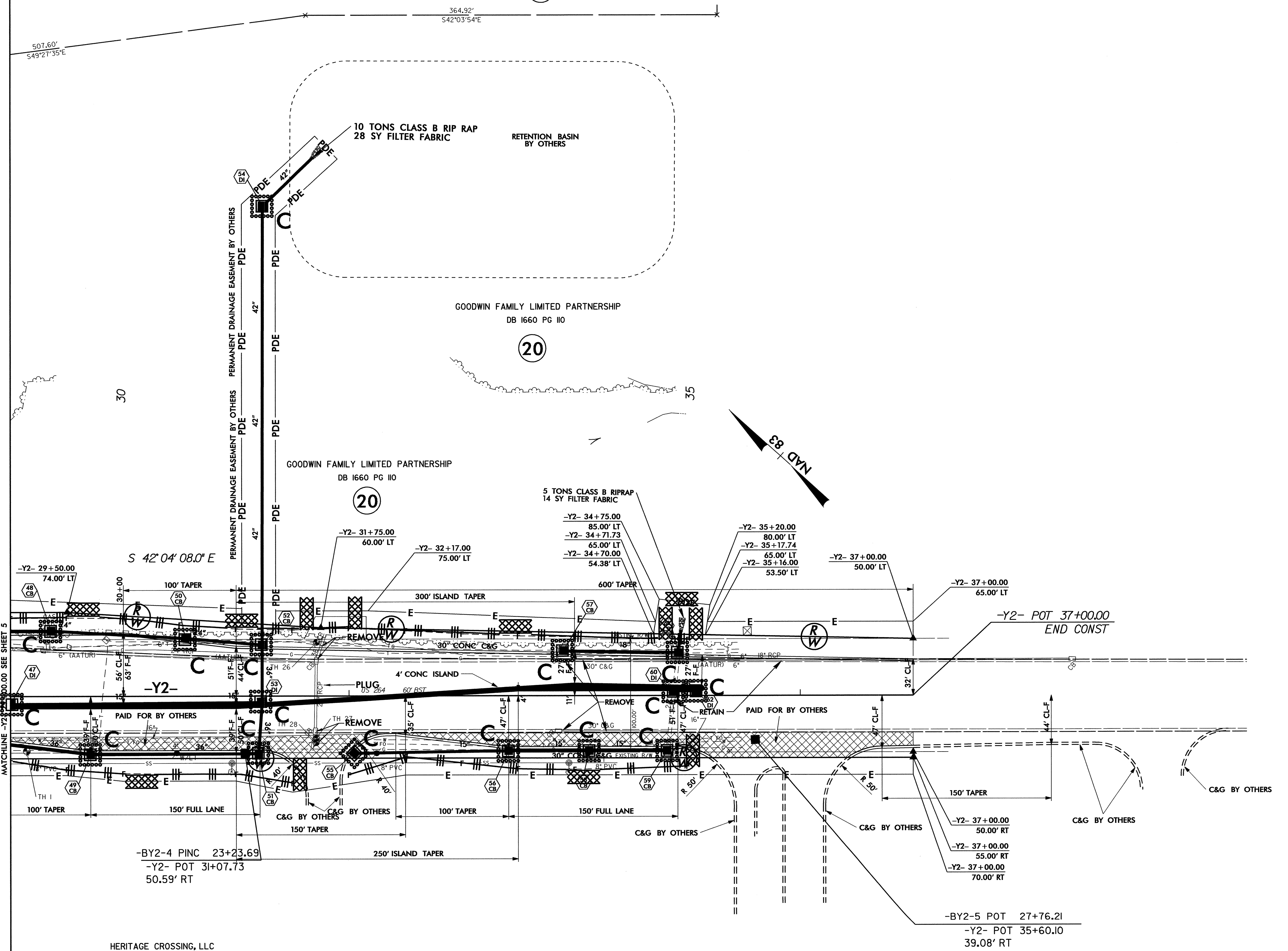


PROJECT REFERENCE NO. <i>U-3823-B</i>		SHEET NO. EC-13/CONST.8
RW SHEET NO. <i>14</i>		
ROADWAY DESIGN ENGINEER	HYDRAULICS ENGINEER	

WOLFRAP HOLDINGS, LLC  
AND STOCOR DEVELOPMENT, LLC

(20A)



364.92'  
S42°03'54"E

507.60'  
S49°27'35"E

10 TONS CLASS B RIP RAP  
28 SY FILTER FABRIC  
RETENTION BASIN  
BY OTHERS

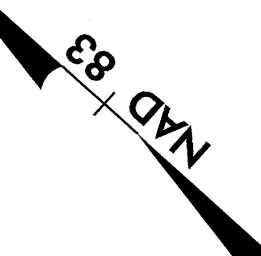
GOODWIN FAMILY LIMITED PARTNERSHIP  
DB 1660 PG 110

(20)

GOODWIN FAMILY LIMITED PARTNERSHIP  
DB 1660 PG 110

(20)

5 TONS CLASS B RIPRAP  
14 SY FILTER FABRIC



S 42° 04' 08.0" E

-Y2- 29+50.00  
74.00' LT  
30+00  
100' TAPER  
100' TAPER  
300' ISLAND TAPER  
600' TAPER  
-Y2- 31+75.00  
60.00' LT  
-Y2- 32+17.00  
75.00' LT  
-Y2- 34+75.00  
85.00' LT  
-Y2- 34+71.73  
65.00' LT  
-Y2- 34+70.00  
54.38' LT  
-Y2- 35+20.00  
80.00' LT  
-Y2- 35+17.74  
65.00' LT  
-Y2- 35+16.00  
53.50' LT  
-Y2- 37+00.00  
50.00' LT  
-Y2- 37+00.00  
65.00' LT  
-Y2- POT 37+00.00  
END CONST  
PAID FOR BY OTHERS  
REMOVE  
PLUG  
4' CONG ISLAND  
30' CONG C&G  
30' CONG C&G  
30' CONG C&G  
PAID FOR BY OTHERS  
RETAIN  
C&G BY OTHERS  
150' TAPER  
150' TAPER  
100' TAPER  
150' TAPER  
150' FULL LANE  
150' FULL LANE  
150' TAPER  
250' ISLAND TAPER  
-BY2-4 P INC 23+23.69  
-Y2- POT 31+07.73  
50.59' RT  
HERITAGE CROSSING, LLC  
DB 2001 PG 609  
DB 1840 PG 001  
(17)  
C&G BY OTHERS  
150' TAPER  
4' CL-F  
150' TAPER  
C&G BY OTHERS  
-Y2- 37+00.00  
50.00' RT  
-Y2- 37+00.00  
55.00' RT  
-Y2- 37+00.00  
70.00' RT  
-BY2-5 POT 27+76.21  
-Y2- POT 35+60.10  
39.08' RT

HERITAGE CROSSING, LLC  
DB 2001 PG 609  
DB 1840 PG 001

(17)

MATCHLINE -Y2- 30+00.00 SEE SHEET 5