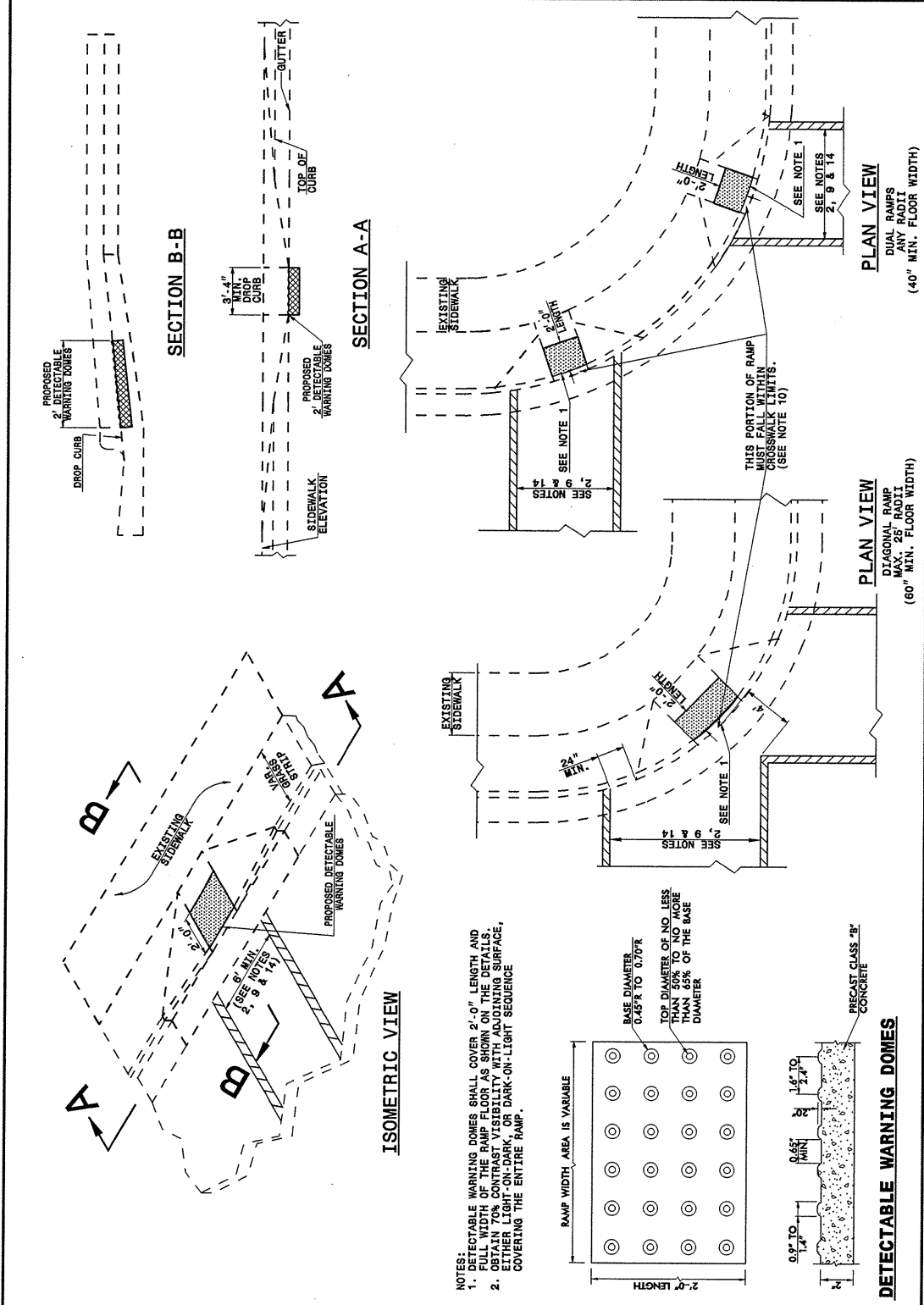


STATE OF
NORTH CAROLINA
DEPT. OF TRANSPORTATION
DIVISION OF HIGHWAYS
RALEIGH, N.C.

ENGLISH DETAIL DRAWING FOR
**RETROFITTING DETECTABLE WARNING DOMES
ONTO EXISTING WHEELCHAIR RAMP**
CURB CUT

SHEET 3 OF 5
848D06



STATE OF
NORTH CAROLINA
DEPT. OF TRANSPORTATION
DIVISION OF HIGHWAYS
RALEIGH, N.C.

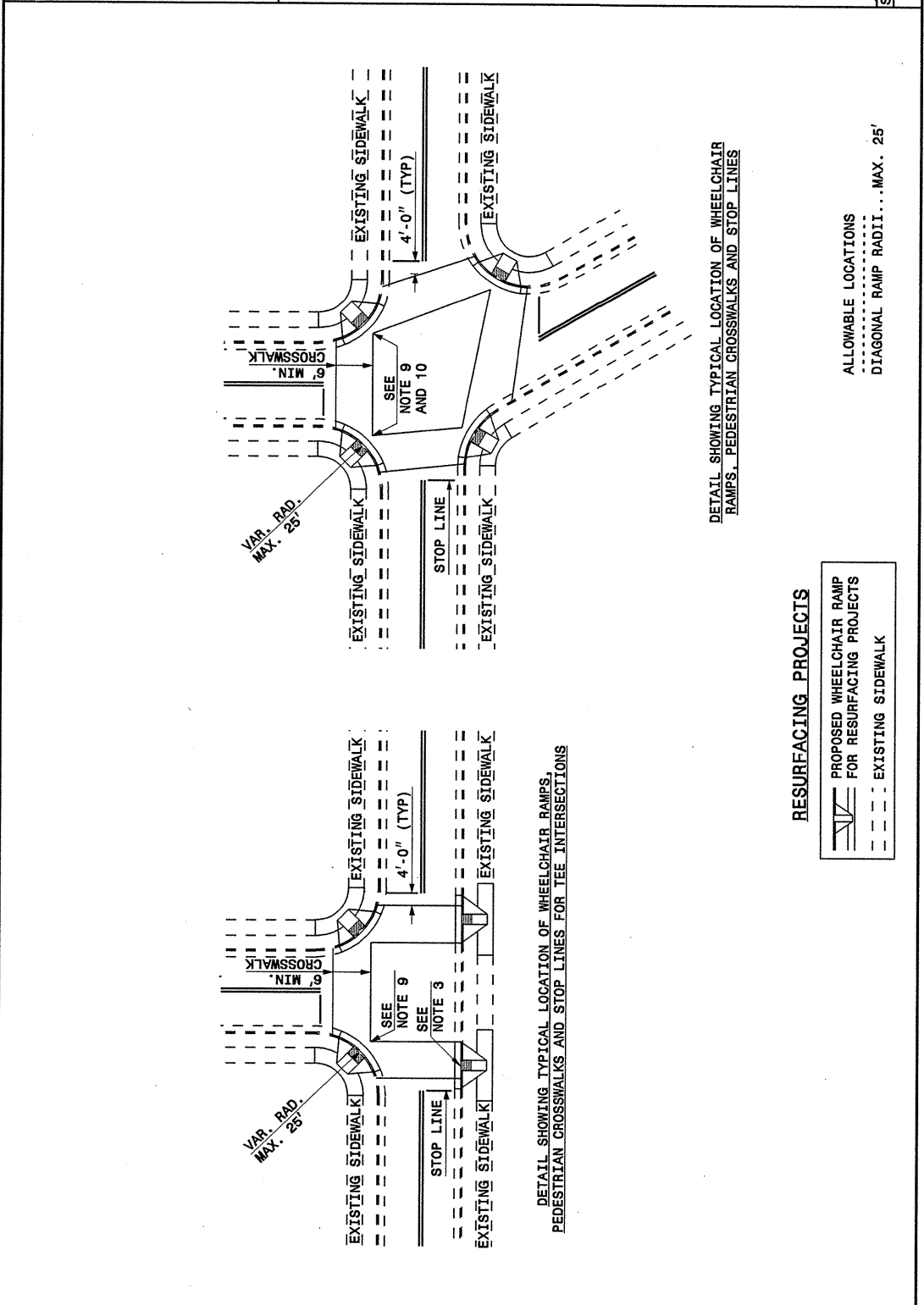
ENGLISH DETAIL DRAWING FOR
**RETROFITTING DETECTABLE WARNING DOMES
ONTO EXISTING WHEELCHAIR RAMP**
CURB CUT

SHEET 3 OF 5
848D06

STATE OF
NORTH CAROLINA
DEPT. OF TRANSPORTATION
DIVISION OF HIGHWAYS
RALEIGH, N.C.

ENGLISH DETAIL DRAWING FOR
WHEELCHAIR RAMP
CURB CUT

SHEET 4 OF 5
848D06



STATE OF
NORTH CAROLINA
DEPT. OF TRANSPORTATION
DIVISION OF HIGHWAYS
RALEIGH, N.C.

ENGLISH DETAIL DRAWING FOR
WHEELCHAIR RAMP
CURB CUT

SHEET 4 OF 5
848D06

**PROJECT SERVICES UNIT
STANDARDS AND SPECIAL DESIGN**
Office 919-250-4128 FAX 919-250-4119

SEE PLATE FOR TITLE

ORIGINAL BY: DETAIL 848D05 DATE: _____
 MODIFIED BY: E.E. WARD DATE: 09-06-05
 CHECKED BY: _____ DATE: _____
 FILE SPEC.: /usr/stds/02todetail/enq1sh/84806/848d06.dgn

15-SEP-2005 14:07:19: \\p02\stds\Special Details\enq1sh\84806\0848d06.dgn
 saved as: 15-SEP-2005 14:07:19: \\p02\stds\Special Details\enq1sh\84806\0848d06.dgn