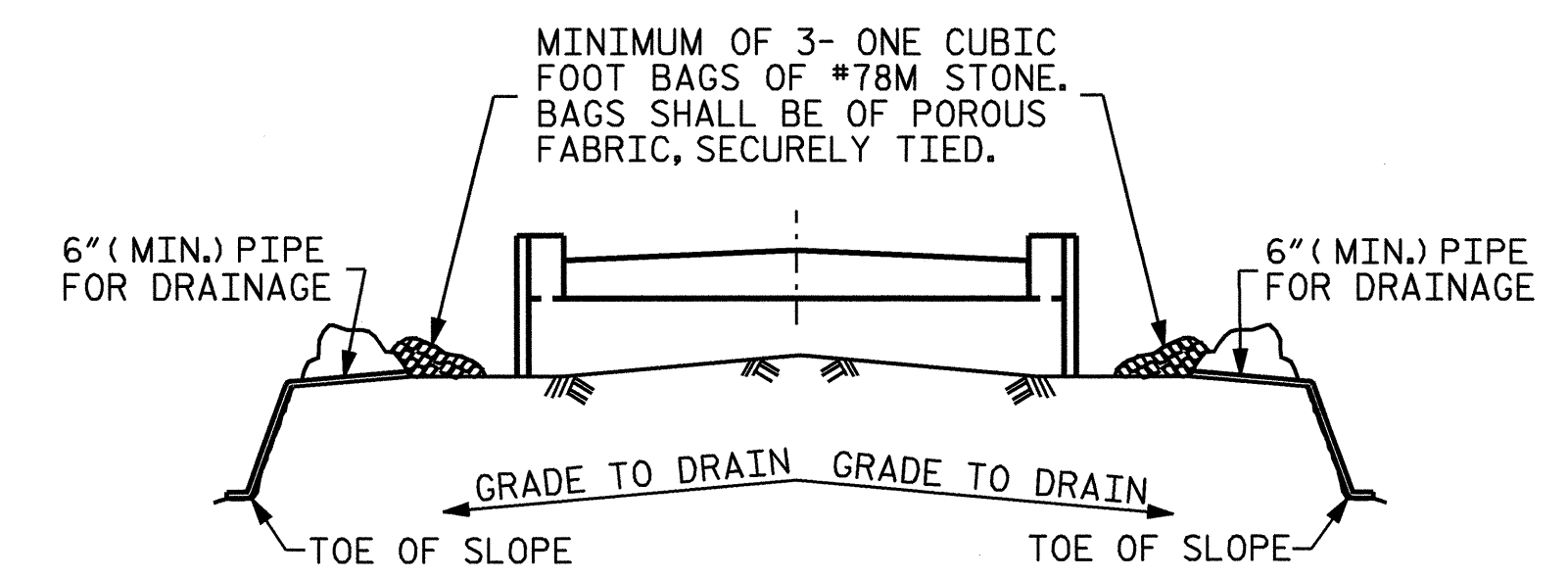


**SECTION A-A**

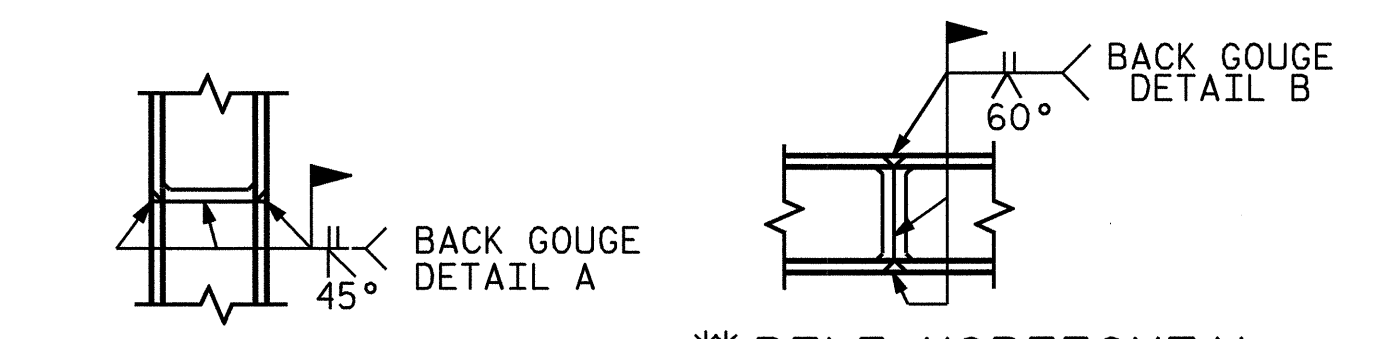


BAGGED STONE AND PIPE SHALL BE PLACED IMMEDIATELY AFTER COMPLETION OF END BENT EXCAVATION. PIPE MAY BE EITHER CONCRETE, CORRUGATED STEEL, CORRUGATED ALUMINUM ALLOY, OR CORRUGATED PLASTIC. PERFORATED PIPE WILL NOT BE ALLOWED.

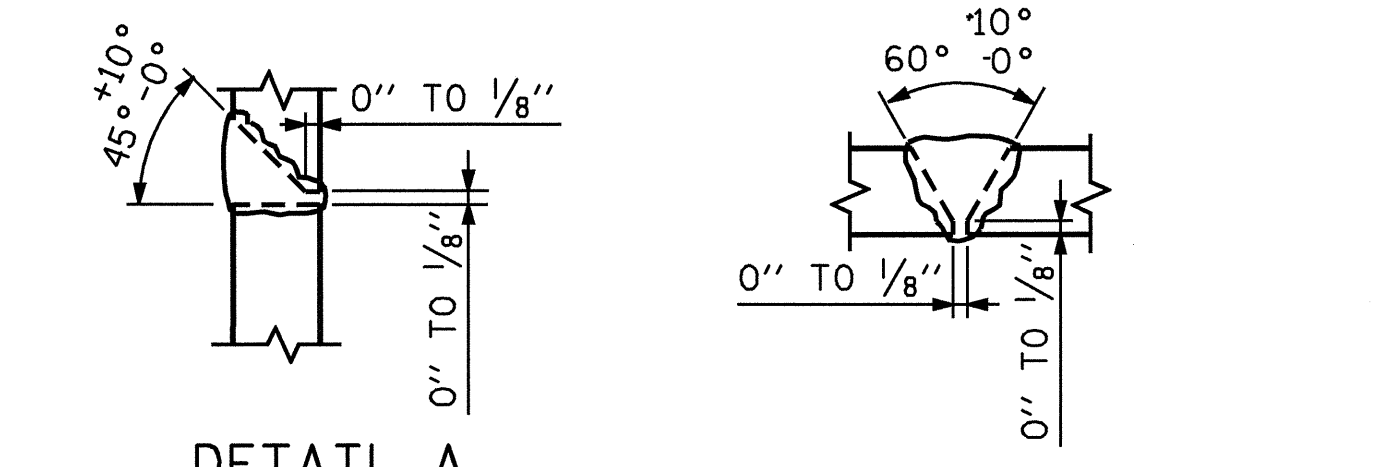
BAGGED STONE SHALL REMAIN IN PLACE UNTIL THE ENGINEER DIRECTS THAT IT BE REMOVED. THE CONTRACTOR SHALL REMOVE AND DISPOSE OF SILT ACCUMULATIONS AT BAGGED STONE WHEN SO DIRECTED BY THE ENGINEER. BAGS SHALL BE REMOVED AND REPLACED WHENEVER THE ENGINEER DETERMINES THAT THEY HAVE DETERIORATED AND LOST THEIR EFFECTIVENESS.

NO SEPARATE PAYMENT WILL BE MADE FOR THIS WORK AND THE ENTIRE COST OF THIS WORK SHALL BE INCLUDED IN THE UNIT CONTRACT PRICE BID FOR THE SEVERAL PAY ITEMS.

**TEMPORARY DRAINAGE AT END BENT**



**PILE VERTICAL**      **PILE HORIZONTAL OR VERTICAL**

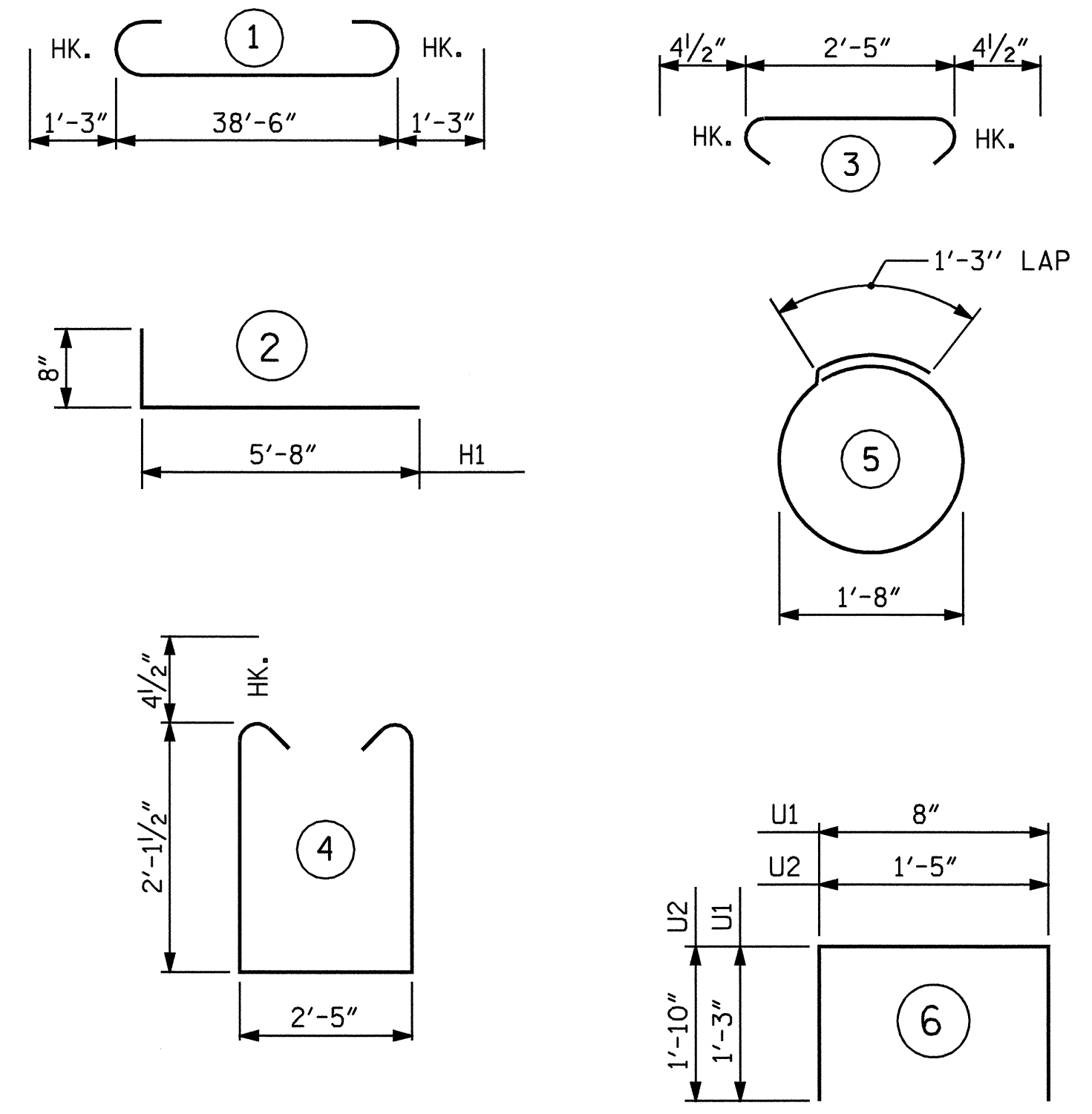


**DETAIL A**      **DETAIL B**

**POSITION OF PILE DURING WELDING.**

**PILE SPLICE DETAILS**

**BAR TYPE**



ALL BAR DIMENSIONS ARE OUT TO OUT.

**BILL OF MATERIAL FOR END BENT #2**

BAR	NO.	SIZE	TYPE	LENGTH	WEIGHT
B1	8	#9	1	41'-0"	1115
B2	2	#6	STR	38'-8"	116
B3	8	#4	STR	20'-7"	110
B4	10	#4	STR	2'-5"	16
D1	22	#8	STR	2'-3"	132
H1	28	#4	2	6'-4"	118
K1	8	#4	STR	20'-7"	110
K2	8	#4	STR	2'-6"	13
S1	34	#4	3	3'-2"	72
S2	34	#4	4	7'-5"	168
S3	18	#4	5	6'-6"	78
U1	33	#4	6	3'-2"	70
U2	4	#4	6	5'-1"	14
V1	66	#4	STR	3'-8"	162
V2	36	#4	STR	4'-11"	118

REINFORCING STEEL = 2412 LBS

**CLASS A CONCRETE BREAKDOWN**

POUR #1	CAP & LOWER PORTION OF WINGS	C.Y.	10.9
POUR #2	UPPER PART OF WINGS & BACKWALL	C.Y.	3.7
POUR #3	LATERAL GUIDES	C.Y.	0.1
TOTAL CLASS A CONCRETE		C.Y.	14.7

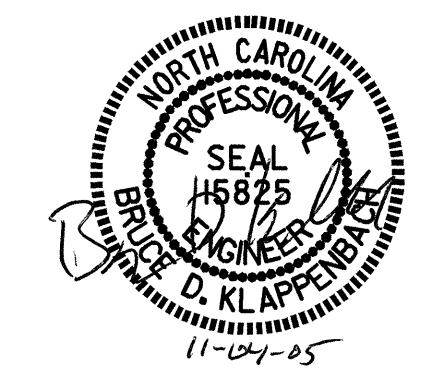
HP 12 X 53 STEEL PILES	NO. 9	LIN. FT.	90
STEEL PILE POINTS	EACH		9

PROJECT NO. B-4180  
MACON COUNTY  
STATION: 17+06.00 -L-

SHEET 3 OF 3

STATE OF NORTH CAROLINA  
DEPARTMENT OF TRANSPORTATION  
RALEIGH

**SUBSTRUCTURE END BENT #2**



REVISIONS						SHEET NO.
NO.	BY:	DATE:	NO.	BY:	DATE:	S-14
1			3			TOTAL SHEETS
2			4			18