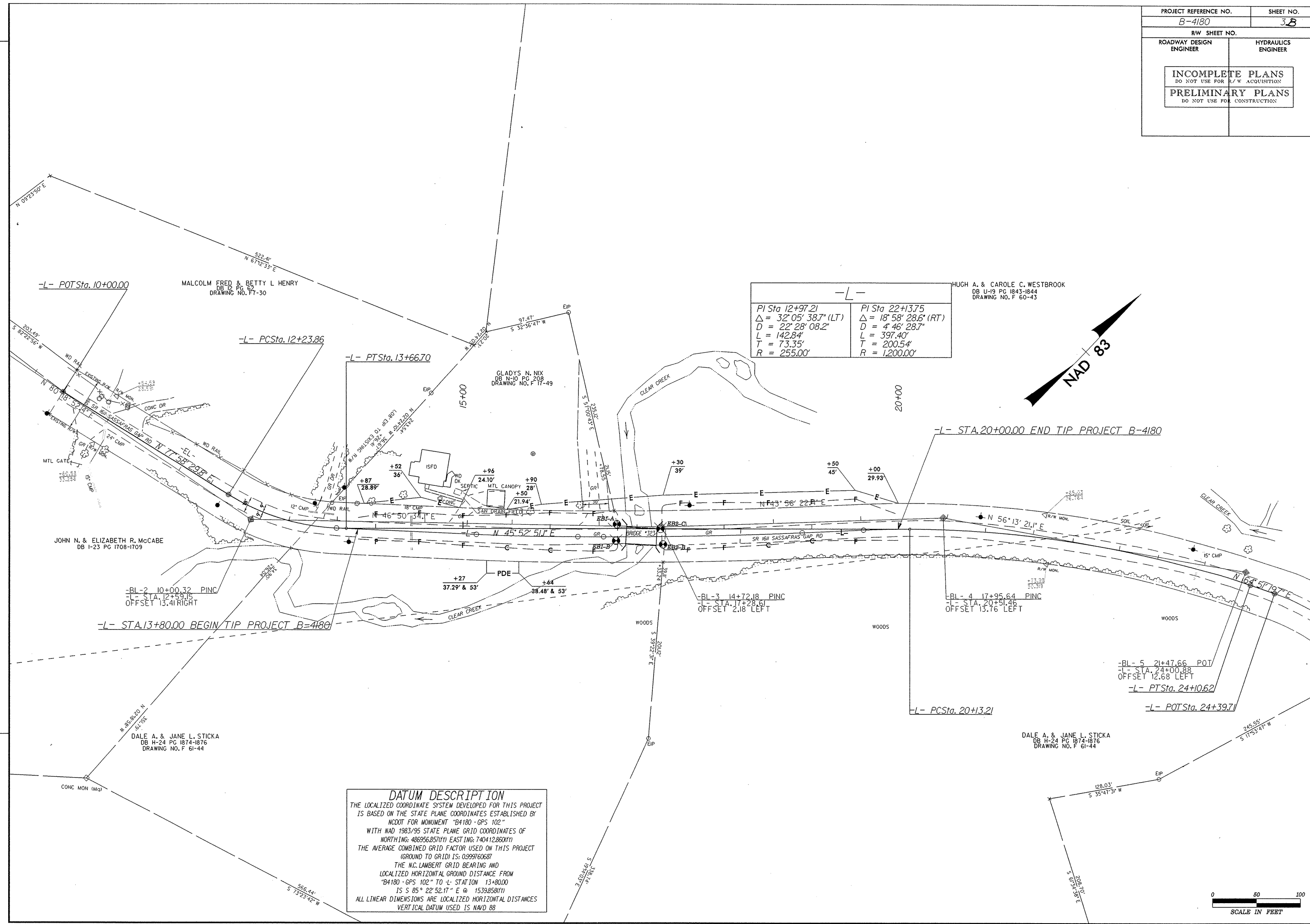
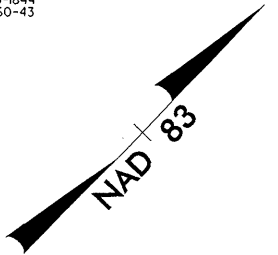


-L-	
PI Sta 12+97.21	PI Sta 22+13.75
$\Delta = 32^{\circ} 05' 38.7" (LT)$	$\Delta = 18^{\circ} 58' 28.6" (RT)$
$D = 22^{\circ} 28' 08.2"$	$D = 4^{\circ} 46' 28.7"$
$L = 142.84'$	$L = 397.40'$
$T = 73.35'$	$T = 200.54'$
$R = 255.00'$	$R = 1,200.00'$

HUGH A. & CAROLE C. WESTBROOK
DB U-19 PG 1843-1844
DRAWING NO. F 60-43



REVISIONS

DATUM DESCRIPTION
 THE LOCALIZED COORDINATE SYSTEM DEVELOPED FOR THIS PROJECT IS BASED ON THE STATE PLANE COORDINATES ESTABLISHED BY NCDOT FOR MONUMENT "B4180 - GPS 102"
 WITH NAD 1983/95 STATE PLANE GRID COORDINATES OF NORTHING: 486956.85(11) EASTING: 740412.86(11)
 THE AVERAGE COMBINED GRID FACTOR USED ON THIS PROJECT (GROUND TO GRID) IS: 0.999760687
 THE N.C. LAMBERT GRID BEARING AND LOCALIZED HORIZONTAL GROUND DISTANCE FROM "B4180 - GPS 102" TO STATION 13+80.00 IS S 85° 22' 52.17" E @ 1539.85(11)
 ALL LINEAR DIMENSIONS ARE LOCALIZED HORIZONTAL DISTANCES
 VERTICAL DATUM USED IS NAVD 88

